

Imperial College
London

Supporting Widening Participation students to succeed

at University

Jackie Bell (she/her)
jaclyn.bell@imperial.ac.uk



A bit about me...



Senior Teaching Fellow, Department of Computing (2019+)



BSc Mathematics (2010), MSc Mathematical Sciences (2011)
PhD Theoretical particle physics (2016)



First generation student, low-income background



10+ years experience in outreach, engagement, and science communication



PI (Royal Academy of Engineering Diversity Impact Programme) to support student transition from school to university



mA*ths (online) programme



Engineering Summer Schools



Mentoring



STEM Futures



Work Experience



STEM Potential

UK Institutions are required to submit and comply with targets set out in their

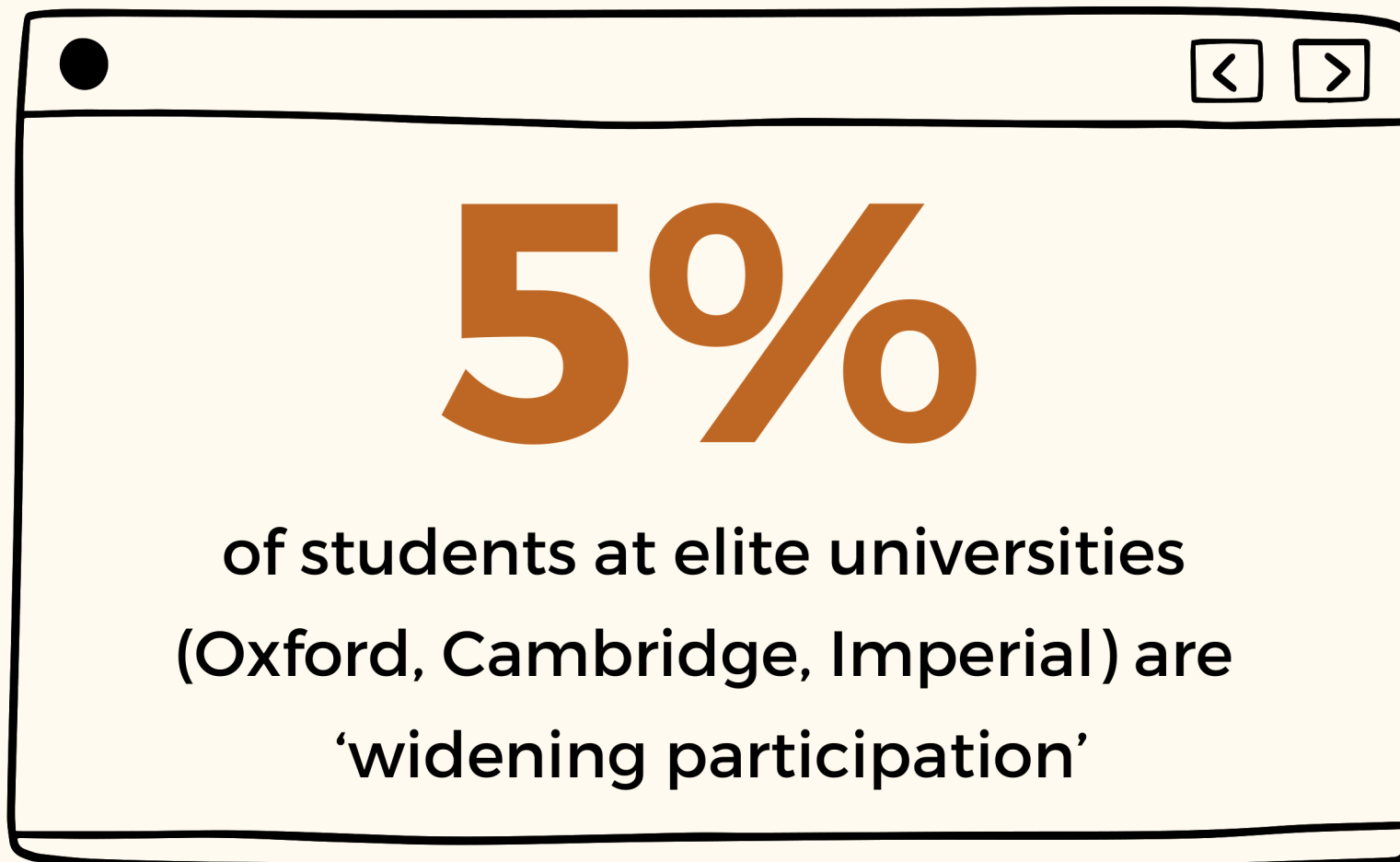
5-year Access and Participation Plan (APP)

For the 20-21 academic year, the Office for Students (OfS) provided

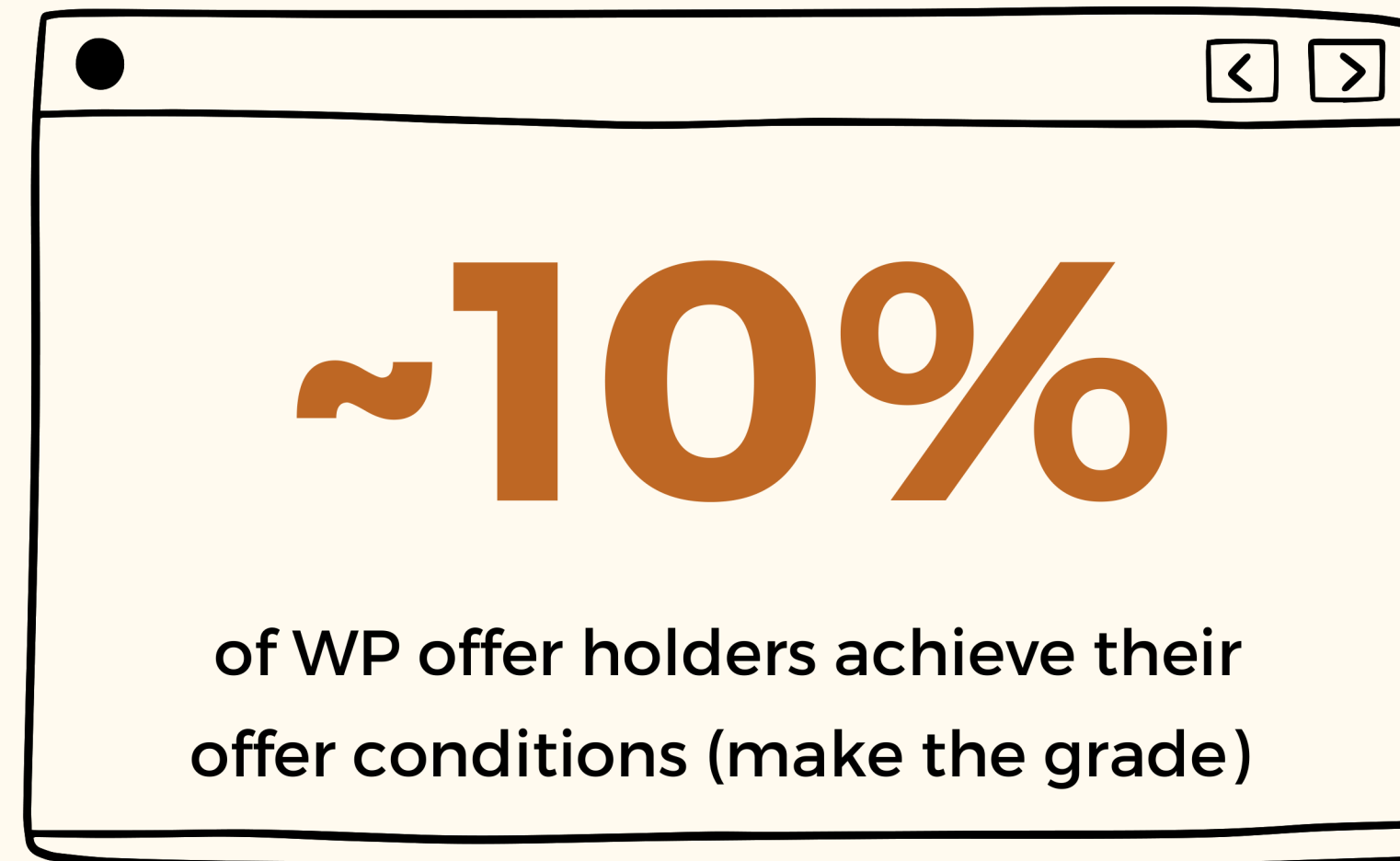
£313 million

for access and participation activity





5%
of students at elite universities
(Oxford, Cambridge, Imperial) are
'widening participation'

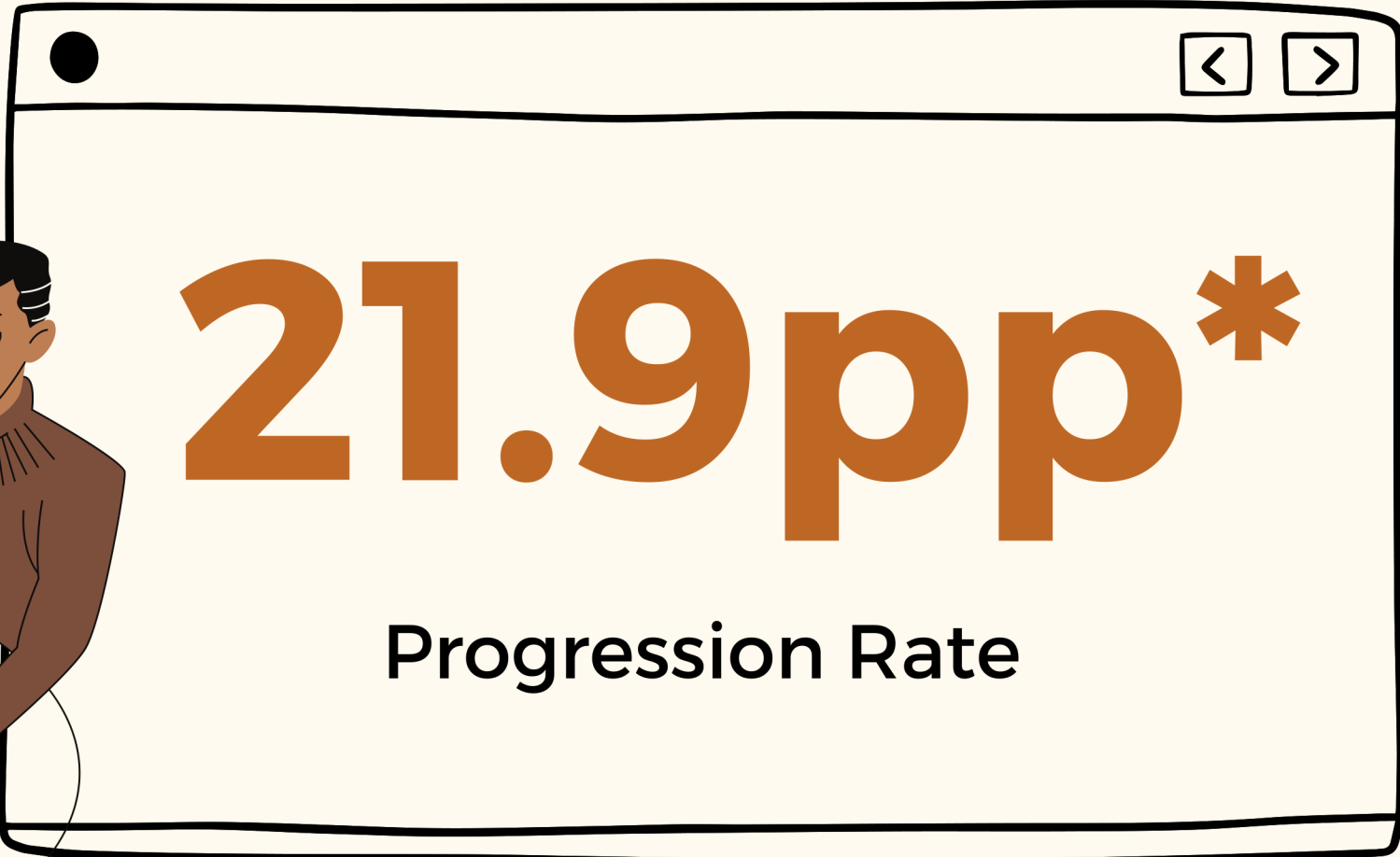
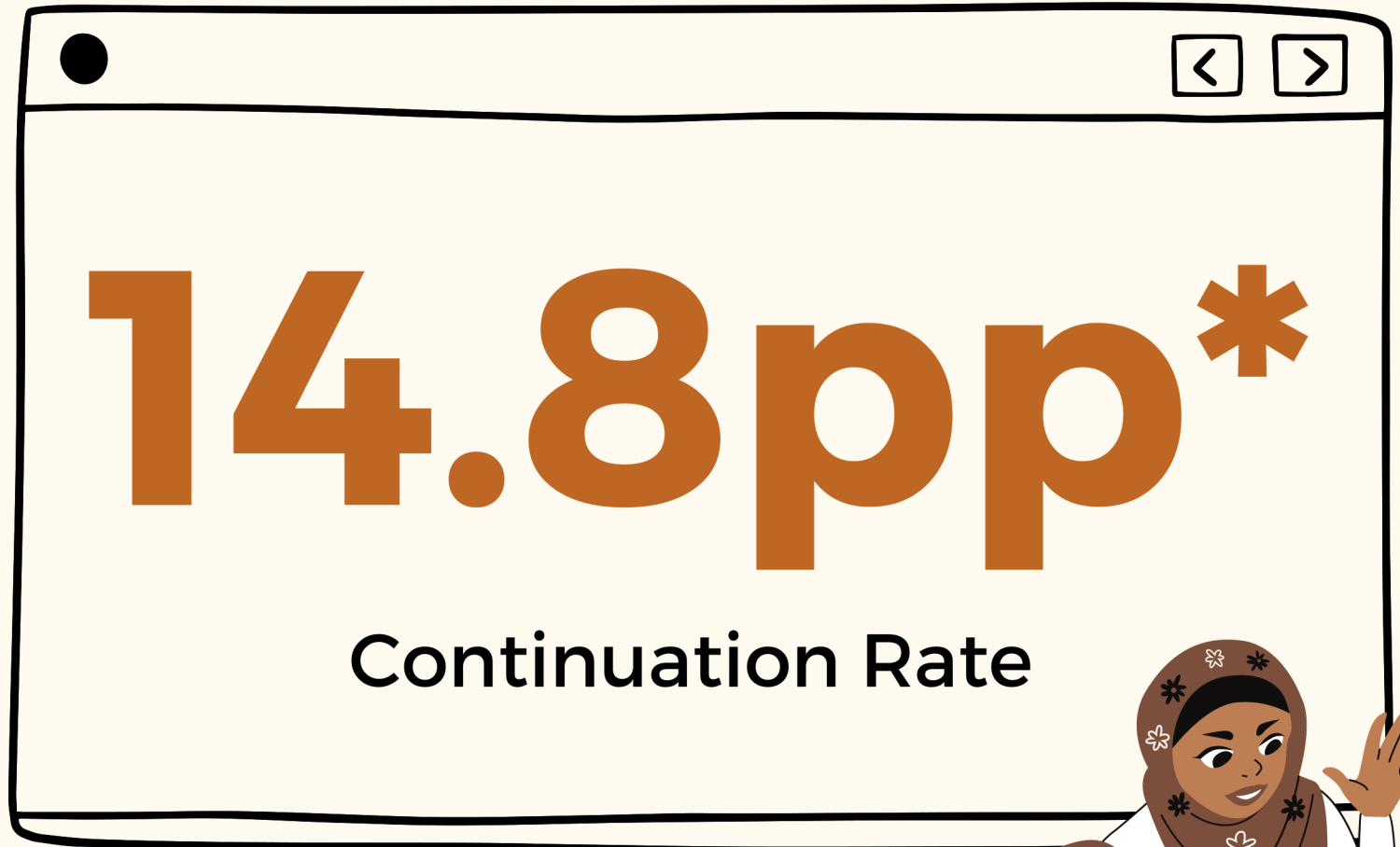


~10%
of WP offer holders achieve their
offer conditions (make the grade)



"Data consistently shows that students from disadvantaged homes with no family tradition of higher education and relatively little financial support are more likely to drop out".

<https://www.advance-he.ac.uk/knowledge-hub/governor-view-new-widening-participation-figures-highlight-competing-performance>



*Associations Between Characteristics of Students (ABCS) measure the likely outcomes for groups of students based on a set of characteristics
<https://www.officeforstudents.org.uk/data-and-analysis/access-and-participation-data-dashboard/findings-from-the-data/>

"I just don't feel there are a lot of **people like me** there"

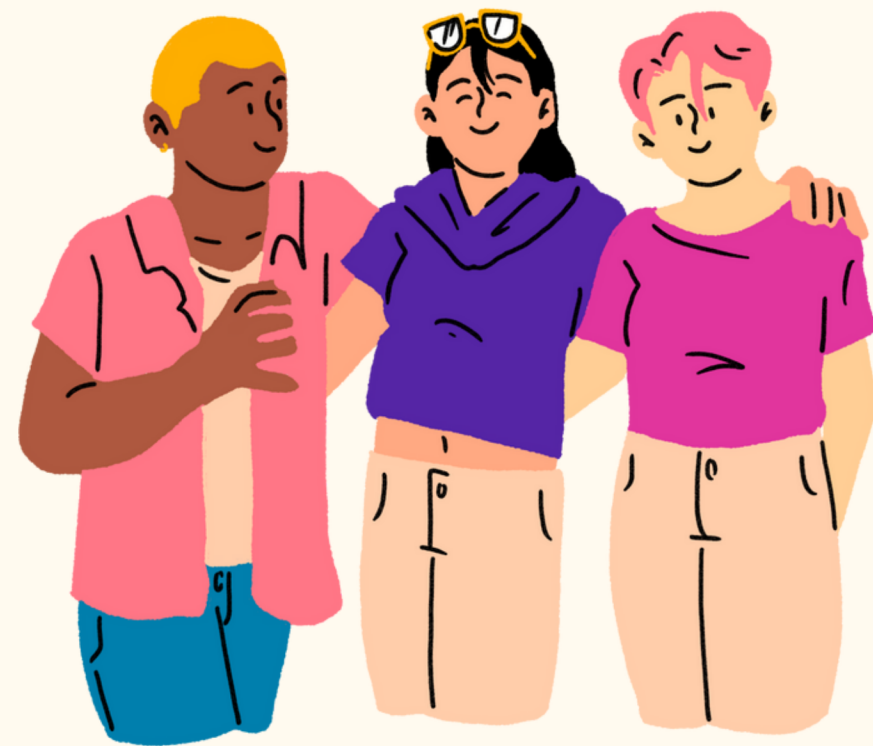


"Haven't made many friends in the department and I feel a **strong disconnect** with the lecturers who teach me."



Working Class Network

Imperial's Working-Class Network is one of the Imperial Union's Community and Liberation Networks. Founded in 2020, the network aims to support Working-Class and First-Generation students throughout their time at Imperial.



Imperial Strategy 2020-2025

“We will enrich the student experience in partnership with Imperial College Union. Creating an environment in which all students feel a sense of belonging and are active participants in a community will enhance the overall student experience and allow students to thrive.”

Imperial College
London

STRATEGY
2020–2025

Enhancing the Student Experience

Imperial College London

Home College and Campus Science Engineering Health Business Search here... Go

StudentShapers – supporting students beyond the curriculum

by *Emily Govan*
20 October 2023



Share this
Tweet this
Share on reddit
Share on LinkedIn
Print this story

MORE
College and campus

Students and staff gathered together for the StudentShapers Symposium, which this year had a theme of 'Supporting students beyond the curriculum'.

LATEST NEWS



HEART STENTS

Heart stents may offer alternative to chest pain medication for angina patients

NEWS IN BRIEF

Bendy X-rays and DMT infusions: News from Imperial

XITING NEWS

Scientists take huge step towards making world's first synthetic yeast genome


MOST POPULAR

Imperial College London

Home College and Campus Science Engineering Health Business Search here... Go


Engineering students get a taste of university life

by *Helen Wilkes, Jackie Bell*
31 October 2022



Share this
Tweet this
Share on reddit
Share on LinkedIn
Print this story

RELATED STORIES



LATEST NEWS

SCIENCE AND POLICYMAKING

Government science adviser encourages more researchers to influence policy

TOXIC TEMPERATURES

Changing temperatures increase pesticide risk to bees

PSYCHEDELIC EXPERIENCE

Advanced brain imaging study hints at how DMT alters perception of reality

In September, the Faculty of Engineering ran a residential programme for incoming widening participation students.

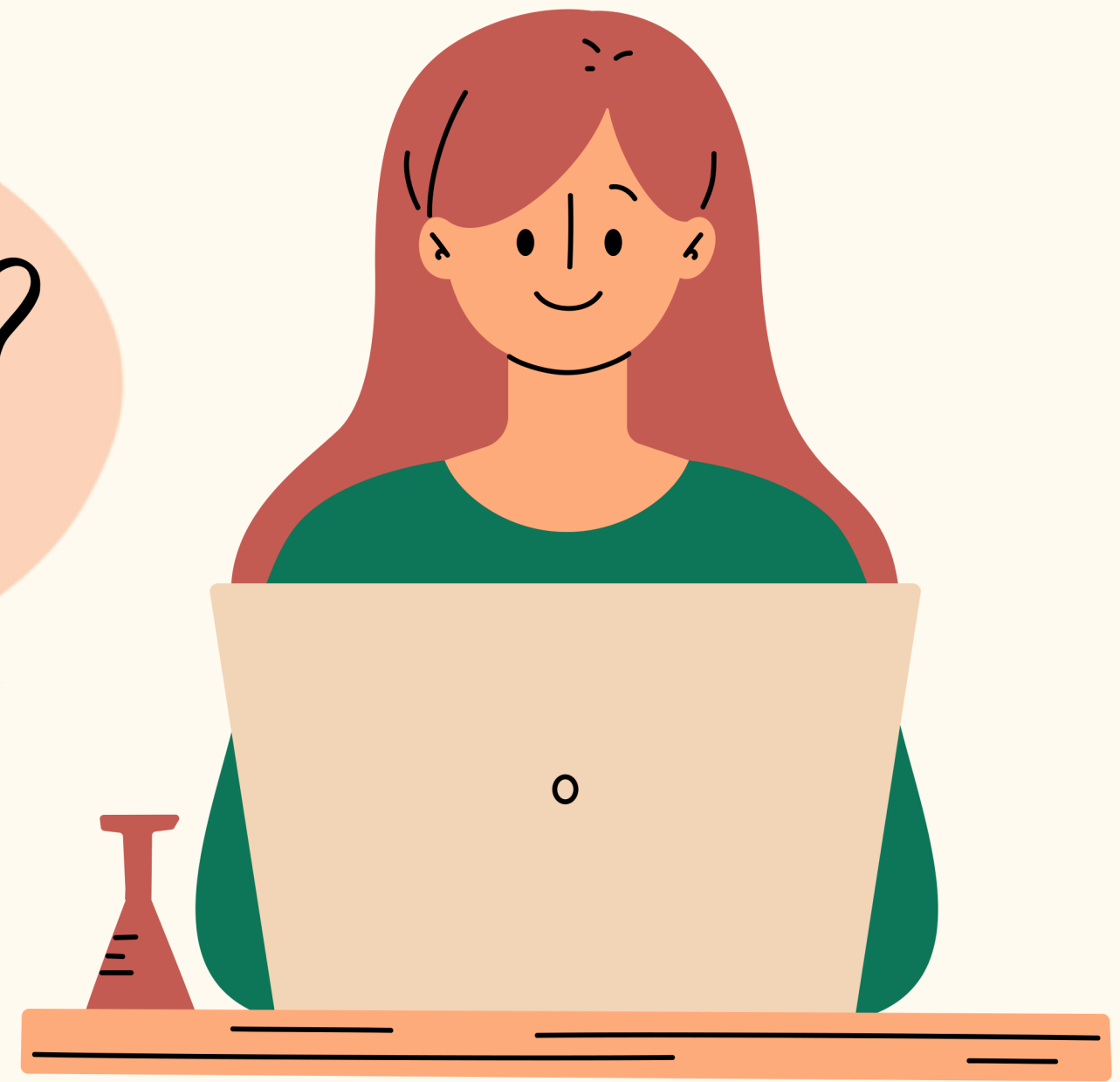
Over 50 students took part in the one-week pilot programme from

<https://www.imperial.ac.uk/news/240935/engineering-students-taste-university-life/>

Thank You

Questions?

Jaclyn (Jackie) Bell (she/her)
Email: jaclyn.bell@imperial.ac.uk



IMPERIAL

Provide feedback!

If you used this resource, please take the time to fill out this form to provide your feedback.

If you have any questions or require more information about the REET (Resources for Embedding EDI in Teaching) project, please contact the Project Lead using the following contact details:

Chloe Agg c.agg@imperial.ac.uk

<https://forms.office.com/e/pHBZpniFvB>

