

Setting up Imperial's Lighthouse Pillar 2 COVID-19 testing lab

Lesley Rawlinson
Department of Infectious Disease



Background

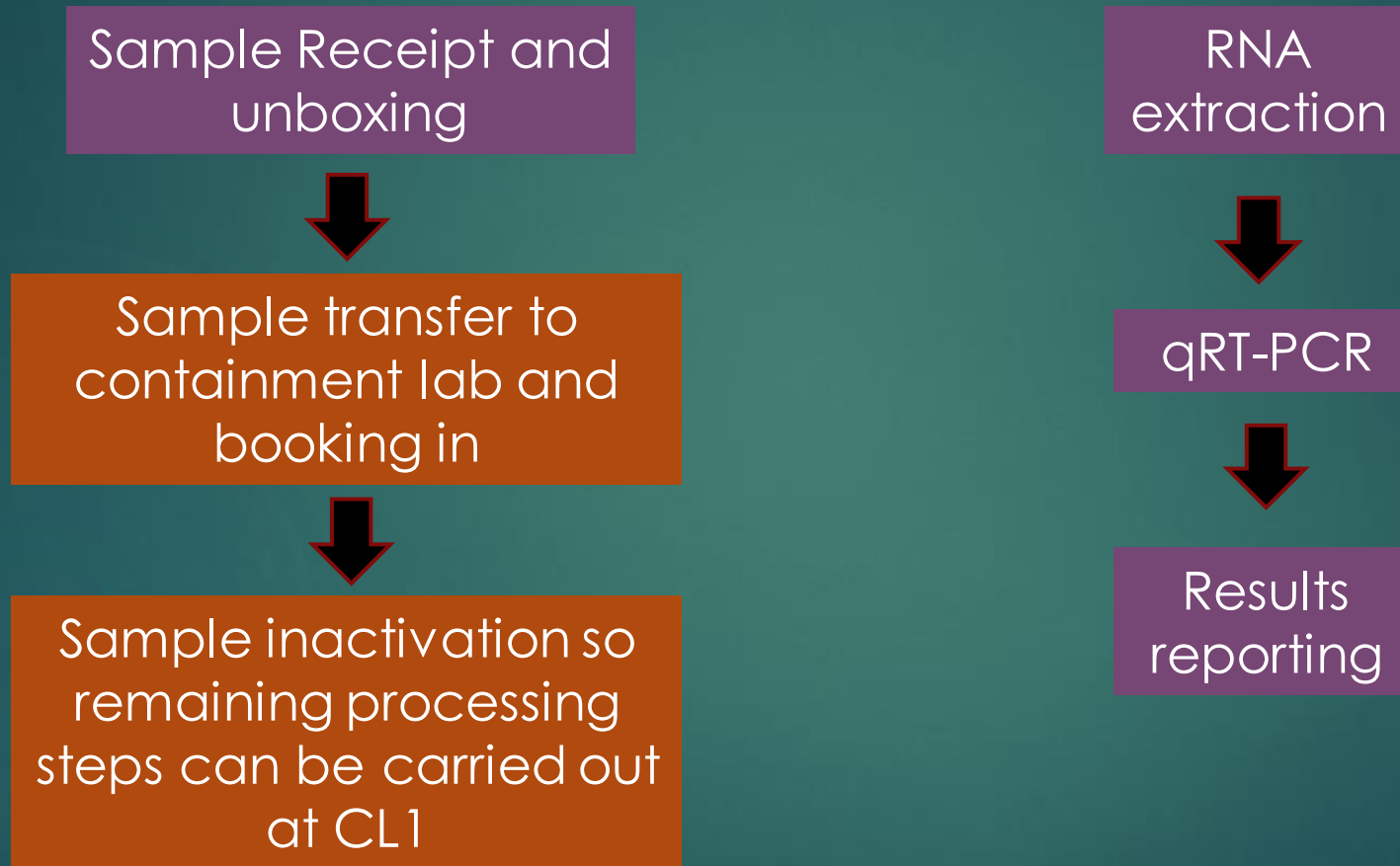
Part of the Department of Health and Social Care's partnership with the London Testing Alliance – brought together by life Sciences cluster MedCity in Dec 2020

Imperial in partnership with UCL, King's and QMUL

Aim to increase testing capacity by 20,500 per day
Samples from members of the public, key workers, and care homes

Supported by Imperial projects (IPROJ) as an expansion of existing testing facility at St Mary's - MDU

Workflow



Challenge 1



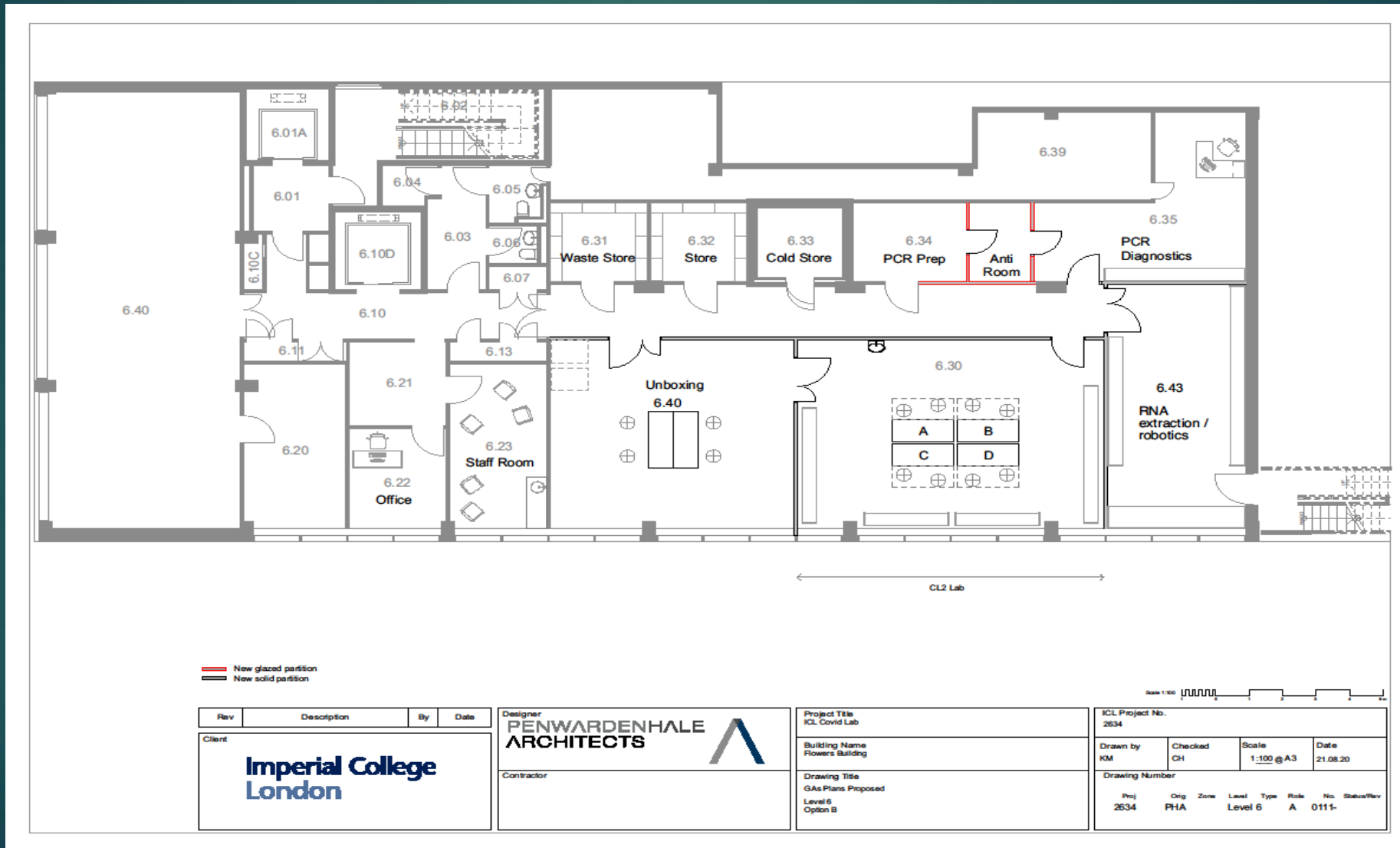
Identifying suitable space

Workflow requirements - replicate the system already established in the MDU and apply to new space

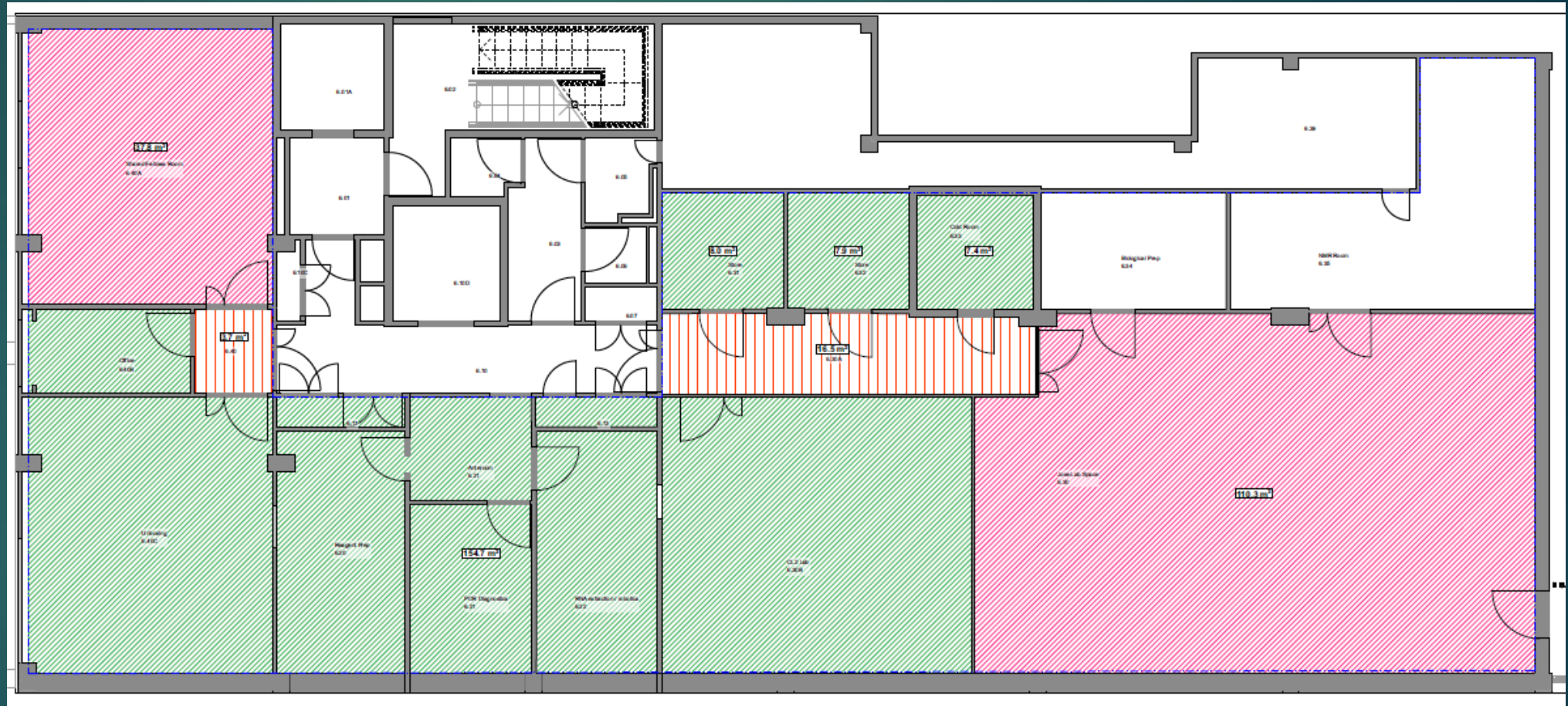
Time scale for delivery




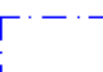
Once identified – development of a lab design which met the needs of both stakeholders in a shared space

Proposed Laboratory area Design 1

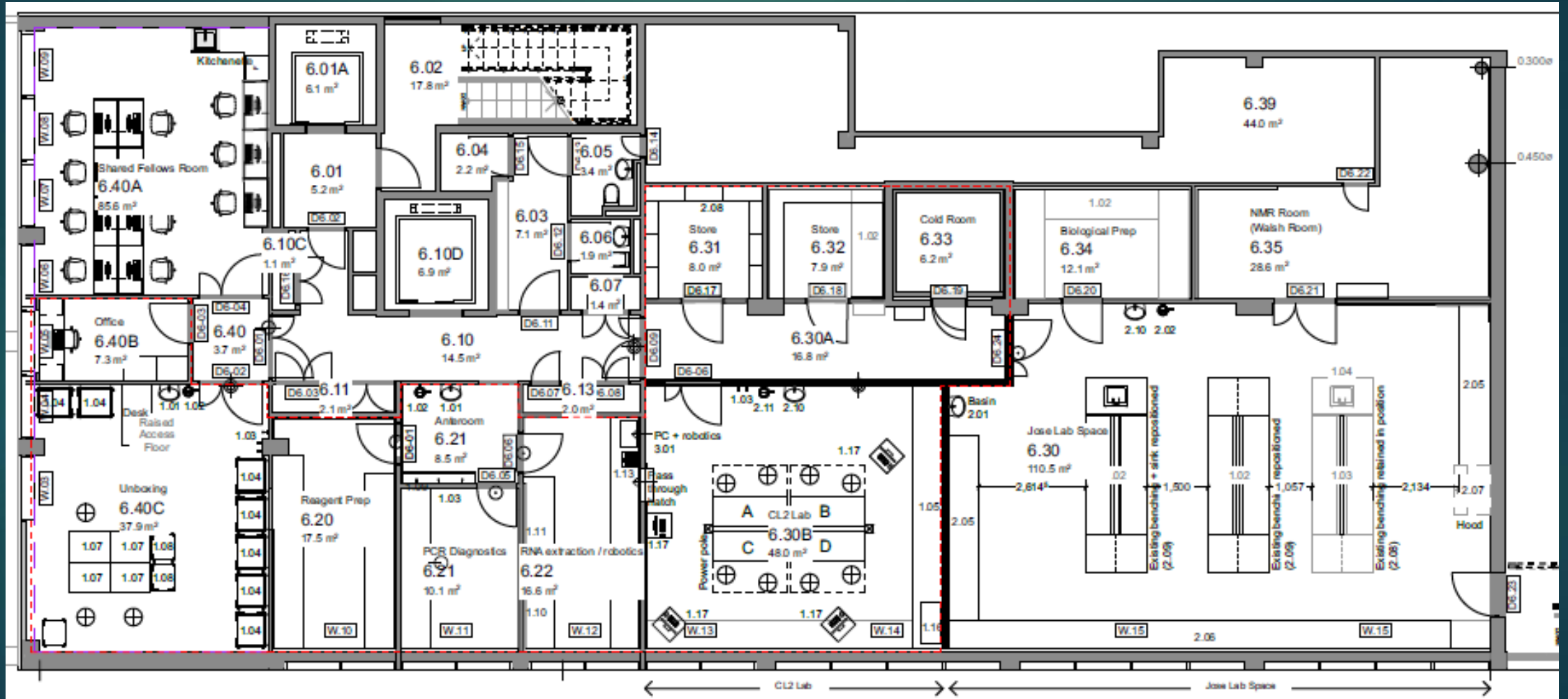


Proposed Laboratory area Design 2



-  Jose Lab Space
-  COVID and Seminar Room L7
-  Shared
-  Extent of scope

Proposed Laboratory area - Final



Developmental stages and management of an estates project

Establish a Project Board (Stage 1)

- ▶ Project Champion
- ▶ Project Director
- ▶ Senior Supplier
- ▶ User Coordinator
- ▶ Project Manager

Stage 0
Indicative
programme

Stage 1
Design
stage

Stage 2
Master
Project

Stage 3
Procurement
package

Stage 4
Master
Construction

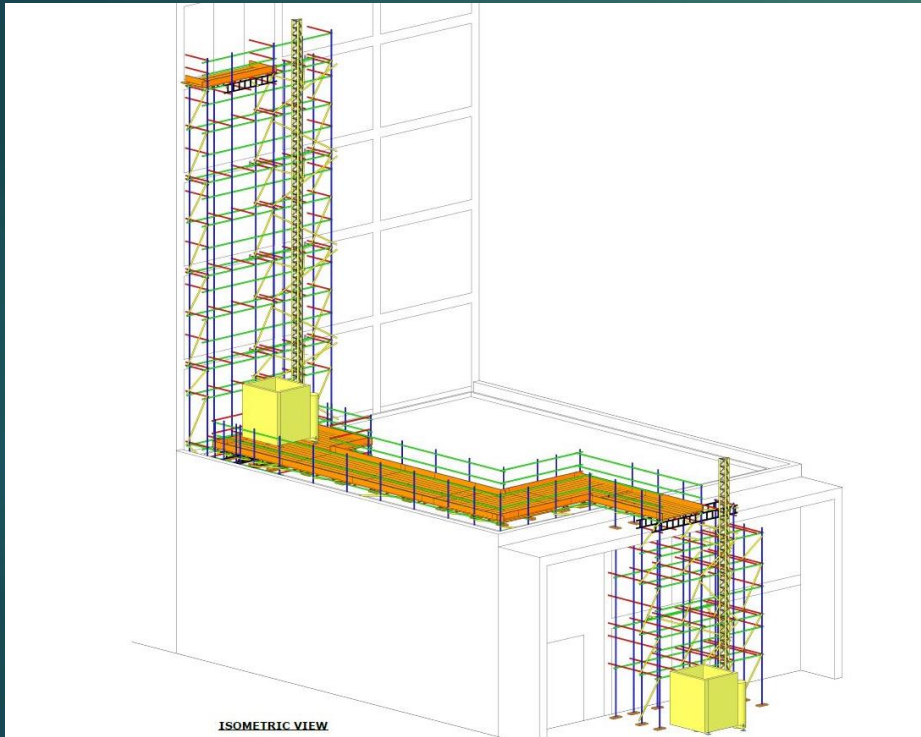
Stage 5
Master
Construction

NHSE Lighthouse Laboratory Project delivery group

- ▶ Oversight of all aspects of project leading to the commissioning of an operational testing lab
- ▶ Weekly meetings
- ▶ Representatives from all stakeholders - IPROJ, College Estates, DoID DHSC etc

Challenge 2

Goods lift replacement project



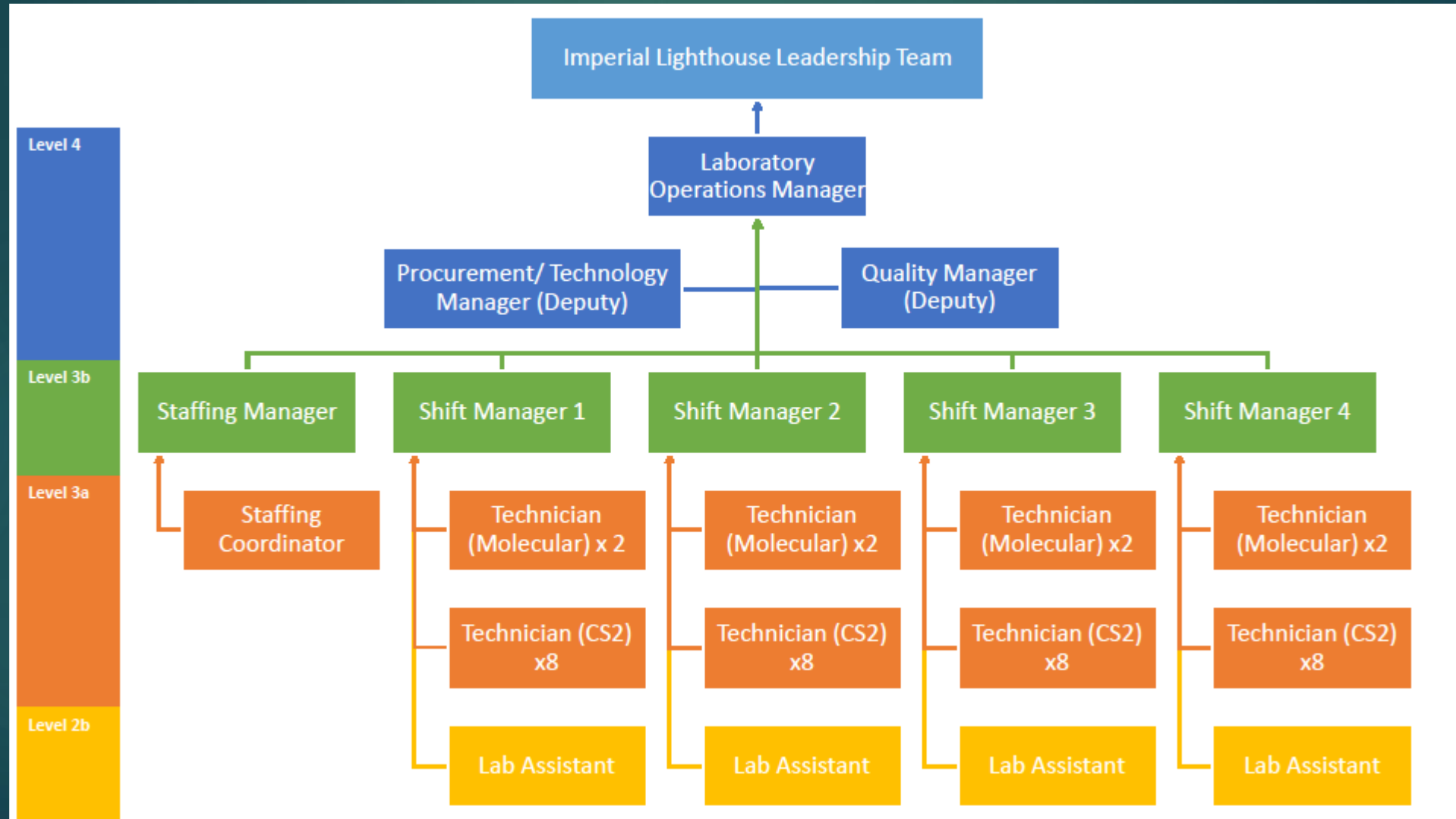
Challenge 3

- ▶ Equipment procurement
 - ▶ Requirements that need building into lab design
 - ▶ Timing
 - ▶ MSC delivery
- ▶ Consumables
 - ▶ Scale up of procurement
 - ▶ Supply and demand – Brexit and COVID labs
 - ▶ DHSC official letter

Challenge 4

- ▶ Knock on effect to recruitment due to delay in opening
 - ▶ Approximately 50 staff started Jan 2021
 - ▶ Training schedule
 - ▶ Lack of space at St Mary's
 - ▶ COVID safety

Staff organisation chart



Health and safety responsibilities

- ▶ Business continuity plan
- ▶ Risk register
- ▶ Schedule of work
- ▶ SoPs

Refurbished rooms



Phased ramp up to approx. 3000 samples processed per day



Acknowledgements

Academic leads – Professor Graham Taylor and * Professor Paul Freemont

MDU testing team

Saber Bashir
Smita Chauhan

Charlotte Accattis
Sam Badru
Karina Caetano
Gabi Drasdauskaite
Ishrat Jahan
Sukhraj Kaur

Robotics support

Michael Crone
Mara Donora
Tom Adam
Kirsten Jensen

* We are grateful for
funding support from
the UK Dementia
Research Institute

For the Department

Ruth Tipples
Sharron Stubbs
Ciaran McKeown
Ed Houlihan
Alison Scoggins

For College

Chris Watkins
Paco Villegas Ruiz
Nick Roalfe
Rod Coppard
Airida Siaule
Layelle Fryer

For iProj

Aliqstair McDermott
Rajneet Kaur
Lurline McCleod
Huma Latif

For DHSC

Niall Ridge
George Morris