



**“Go big or go home!” Will a student-led symposium be a sustainable assessment in Bioscience Futures MSc?**

**IMPERIAL**

Festival of Learning and Teaching 2024



**Dr Anne Burke-Gaffney**  
Co-Director for Bioscience Futures MSc



**Dr Blerina Ahmetaj-Shala**  
Lead for Bioscience Futures & Foresight Module

# Why an MSc on Bioscience Futures?

**Innovators**



**Leaders**



*Time for  
Change*

**Change makers**



# Why an MSc on Bioscience Futures?

**Innovators**



This Photo by Unknown Author is licensed under [CC BY](#)

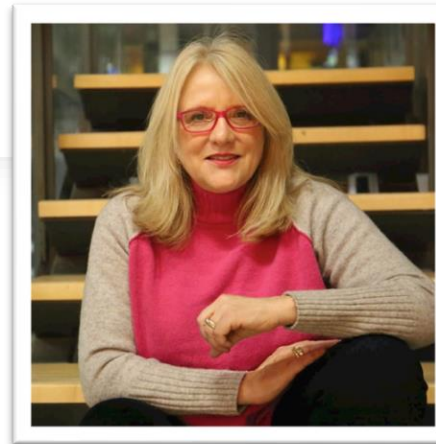
**Leaders**



This Photo by Unknown Author is licensed under [CC BY-SA-NC](#)



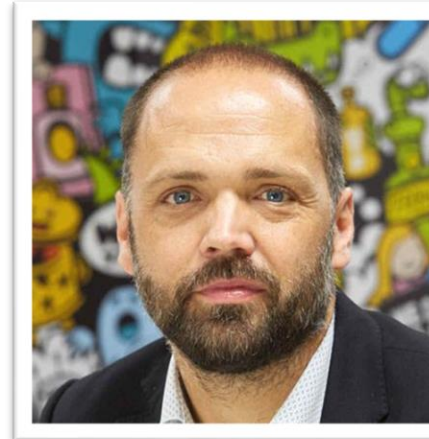
# Key contributors



Sara Rankin  
Course Director



Anne Burke-Gaffney  
Co-Course Director



Ben Mumby-Croft,  
Director of  
Entrepreneurship



Vjera Magalenic-  
Mossavi, Director  
of IPC, FoM

# How did the course come about?

GDS MSc

Enterprise Lab

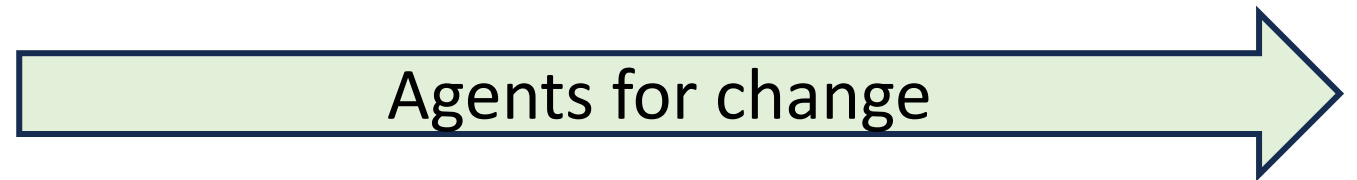


Industry Partnerships & Commercialisation



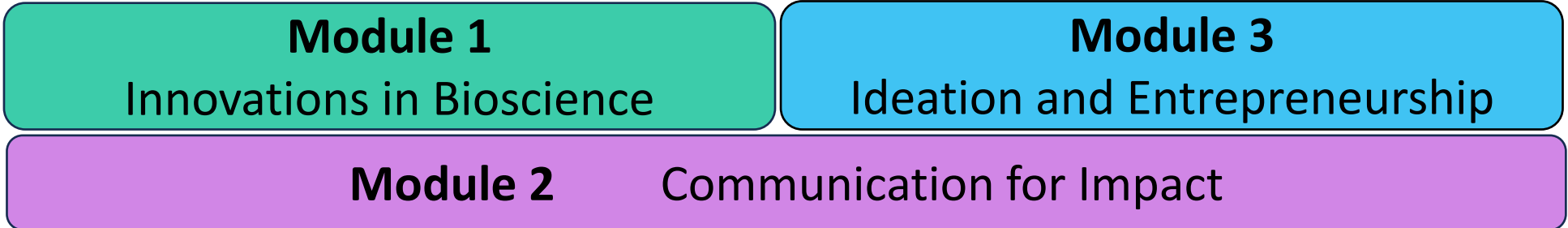
GDS MSc Students enjoying the Enterprise Lab and a commercialisation session

# Sustainability is a key component of Bioscience Futures MSc

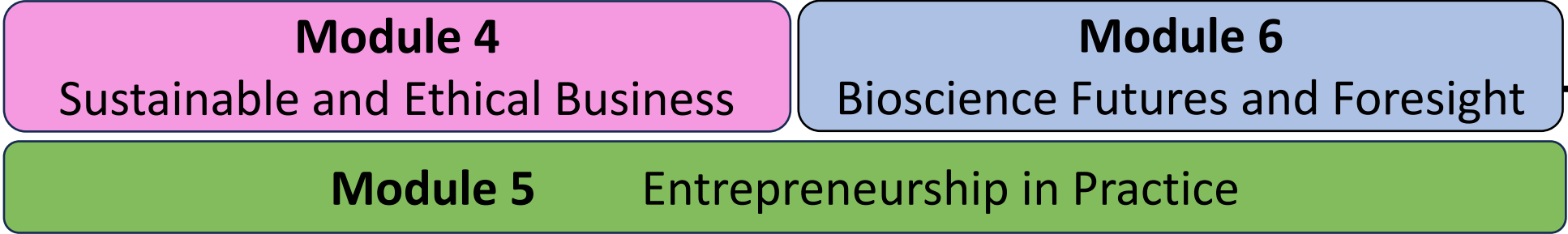


# What is the structure of the course and module 6?

## Autumn Term



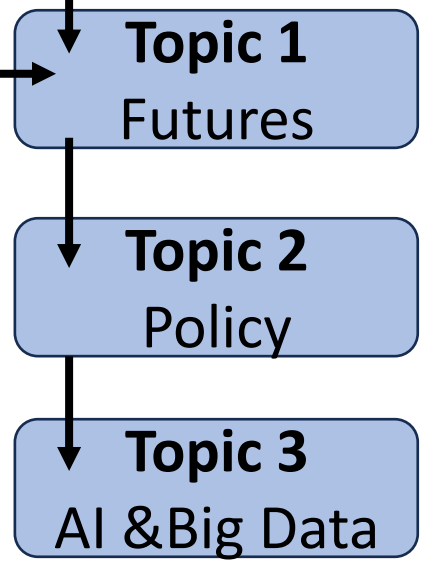
## Spring Term



## Summer Term

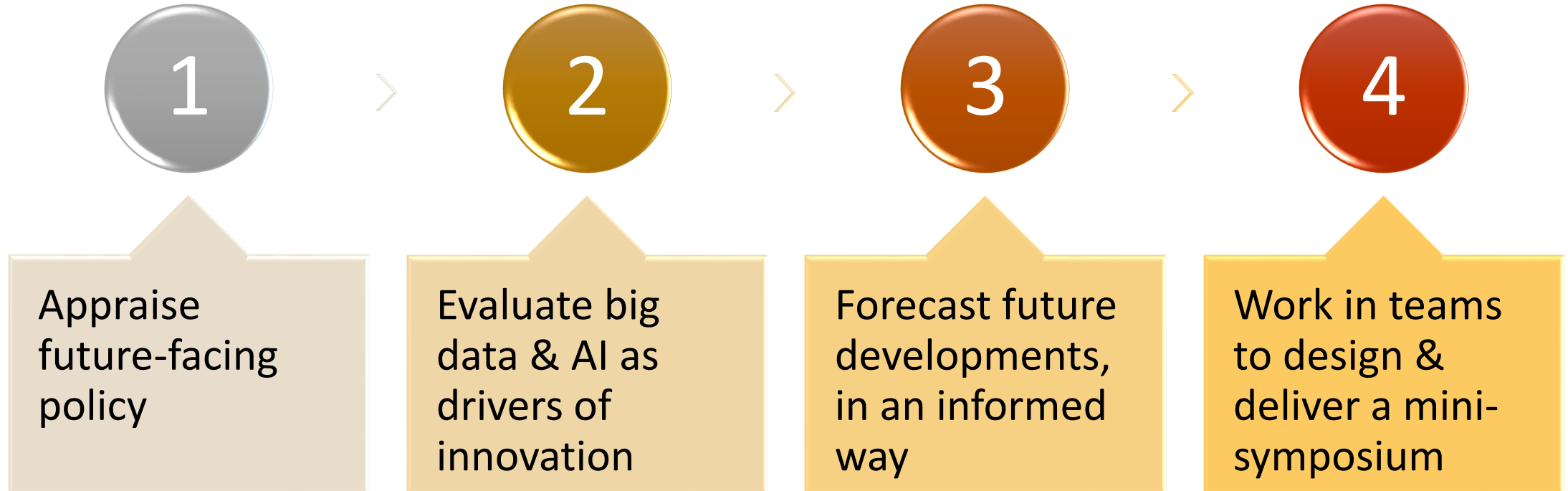
## Work-Based Placement

**Module 6**  
3 sessions per week, each has 1h preparation and 3h face-to-face



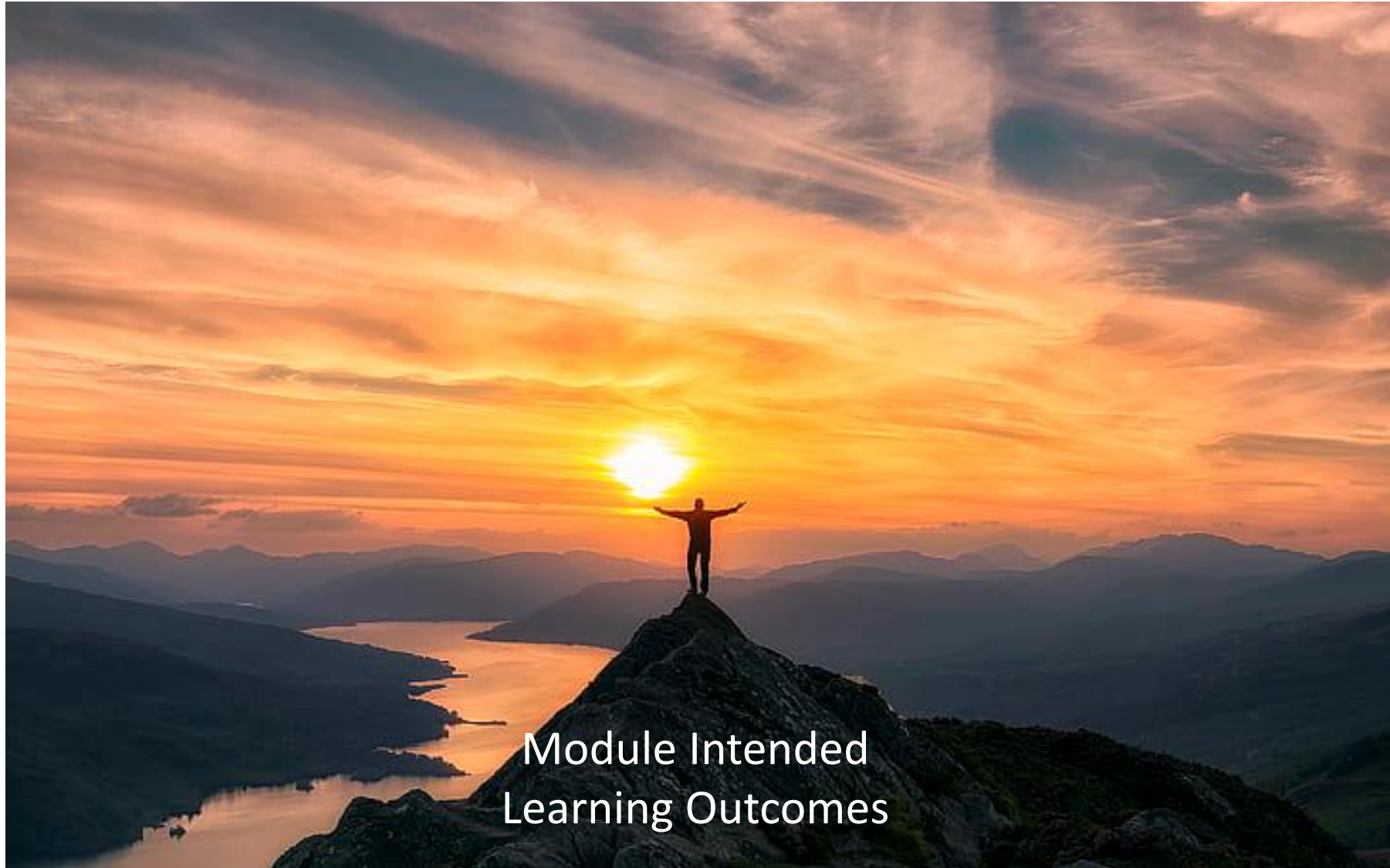
# What are the module Intended Learning Outcomes?

By the end of the module Bioscience Futures students will be able to:





# What is a sustainable assessment?

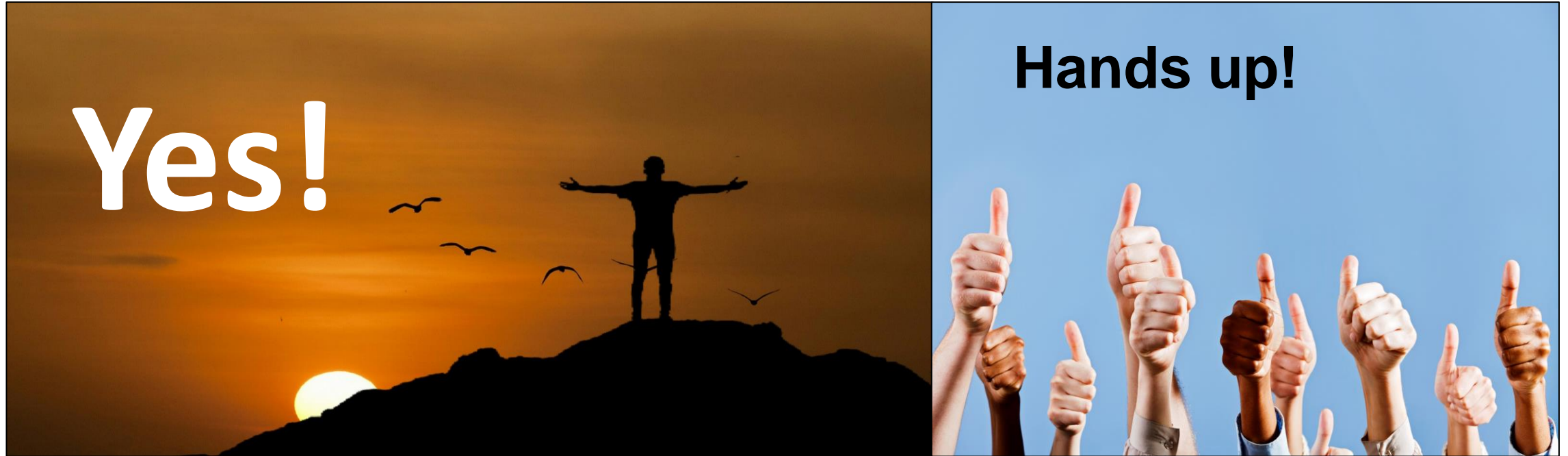


Module Intended  
Learning Outcomes

# What are the assessments for Module 6?

Weeks	1	2	3	4-6
Topic	Futures	Policy	AI & Big Data	ICAs
Formative Assessments	Abstract writing	Symposium evaluation form	Proceedings report & a press release	
Summative Assessments	Write an abstract for the symposium	Develop, deliver and present at symposium	Write a proceedings report/ press release	
Deadlines	By end of week 4	During week 5	By end of week 6	

**Have your say! Do you think this a sustainable assessment?**



**NO WAY!**

Will the symposium produce

**(Bio) Science Fiction**

OR

**(Bio) Science Futures?**



## A big thank you to:

- Centre for Languages, Culture and Communication - Michael Weatherburn
- Imperial Policy Forum - Craig Whittall and Pete Ford
- Centre for Academic English - Julie King
- Jeffrey Vernon - for suggesting the assessment!!
- NHLI Education team - for believing it's (still) possible - we hope!
- Digital Education Office - Marium Gabol for online content development.

Thank you for your contributions today

Please do get in touch if you have any suggestions!

- *All images are Creative Commons, Imperial or personal*