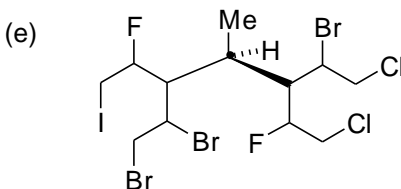
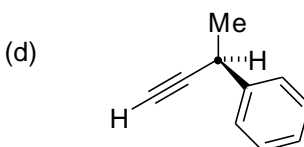
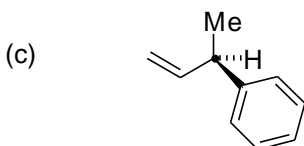
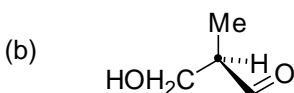
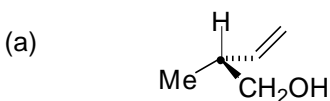


Chemistry I (Organic): Stereochemistry

TUTORIAL PROBLEMS

Prof Alan Spivey; Office: 835 C1; e-mail: a.c.spivey@imperial.ac.uk; Tel.: 45841

- 1) Assign (*R*) or (*S*) configuration to the indicated stereogenic centre in the following molecules.



- 2) Draw all the stereoisomers of the following compounds. Indicate the relationship between the stereoisomers you have drawn (*i.e.* enantiomers/diastereomers) and assign (*R*) or (*S*) configuration to all stereogenic centres.

