



STFC External Innovations

Impact Funding Schemes

Imperial Space Lab - 29th September 2015

Dr Vlad Skarda DBA CPhys

Knowledge Exchange Manager

Science and Technology Facilities Council

vlad.skarda@stfc.ac.uk

Funding Mechanism

HM Government (and HM Treasury)



BIS | Department for
Business Innovation & Skills



RCUK Executive Group

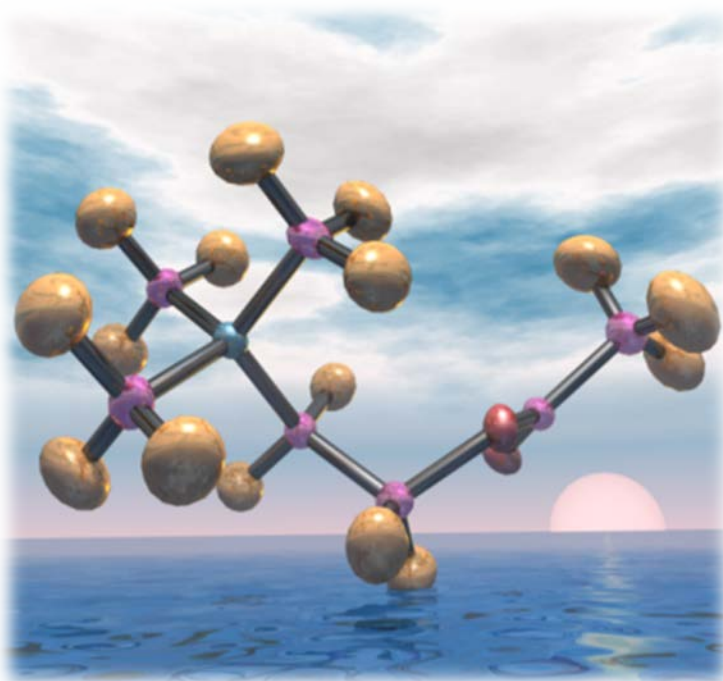


Arts & Humanities
Research Council



Science and Technology Facilities Council

STFC PD funds world class and world-leading research in
- **particle physics, astronomy, nuclear physics and space science**



- This research takes place in
 - **university groups**
 - **STFC sites/laboratories**
 - **international organisations**
- Providing access to world class **UK facilities** and **overseas facilities**
- **Funding university researchers**
1,700 academic staff in 40+ UK universities



Technology to underpin science

Developing and delivering innovative technologies in STFC laboratories and in collaboration with University groups

Key Technologies

- Accelerator technologies
- Instrumentation
- Detectors and Sensors
- Data Acquisition and Processing Systems
- Microelectronics design
- High power lasers
- High Performance Computing



- **Significant industrial applications**
- Collaborative efforts



STFC External Innovations: Objectives

- To transfer knowledge to diverse technological sectors
- Promote interdisciplinary collaborative research with industry leading to commercialisation (schemes, networking, proposals)



Eligibility for STFC External Innovations Funding

- Eligibility arises from STFC funded research as the source of knowledge (academic lead)
- Funding schemes open to STFC Labs, HEIs and international subscriptions (CERN, ESO)
- Other Universities or industry can participate provided that they collaborate with STFC funded partner



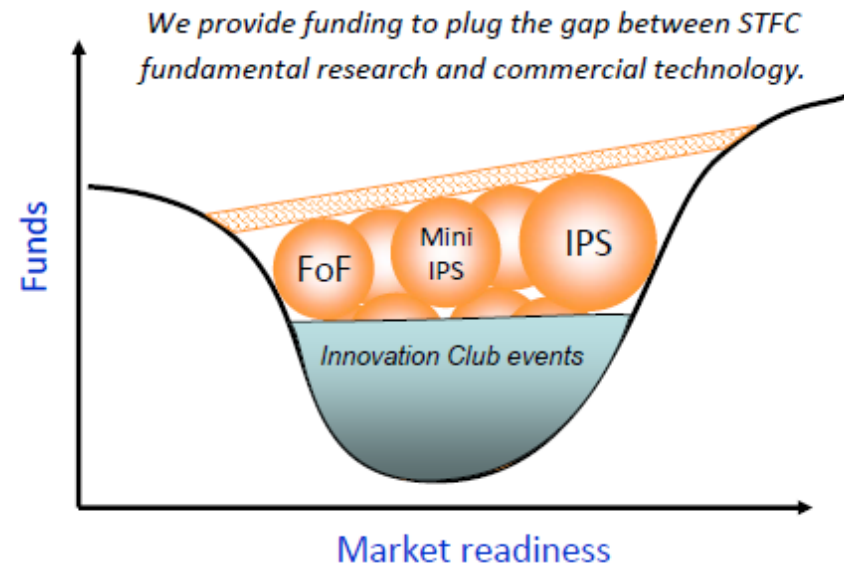
External Innovations Funding Schemes

□ Provide funding support to help to bridge the 'commercialisation gap'

□ Key aims

- ❖ Transfer
- ❖ Partnership & Collaboration
- ❖ Exploitation
- ❖ **Economic Impact**

Innovative technologies, industrial/economic advances, new skills, societal benefits...



Impact through innovation

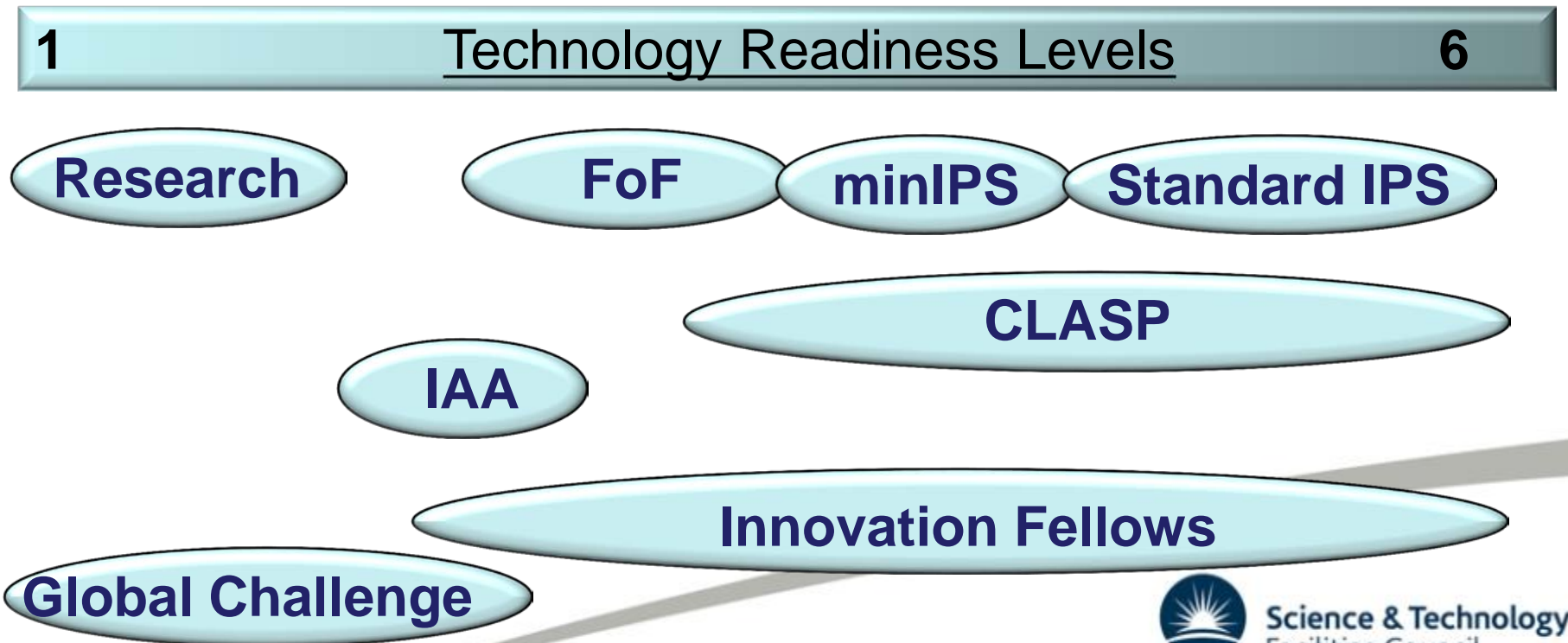
External Innovations Funding Schemes

- ❖ **IPS** - Innovations Partnerships Schemes – **3 calls/year**
 - Follow on Funding (FoF)
 - IPS and Mini-IPS
 - **IPS Fellowships** - dedicated technology transfer staff
- ❖ **IAA - Impact Acceleration Account** for TTO at universities
- ❖ **CLASP** - Challenge Led Applied Systems Programme
 - Aligned to STFC Futures Programme
Energy, Environment, Healthcare, **Security**
- ❖ **Global Challenge Programme**
- ❖ **KTP** - Knowledge Transfer Partnerships – Innovate UK scheme
- ❖ **RSE Enterprise Fellowships**



External Innovations Funding Schemes - TRL

- **Responsive:** Follow-on Funding and IPS
- **Challenge-led:** Global Challenge and CLASP
- **Delegated:** Impact Acceleration Account and Innovation Fellows



Follow on Funding

Aim - To establish commercial feasibility on scientific and technical merit

- Proof of concept funding - £110k/year
- Undertaking further scientific and technical development of an idea
- Improving an intellectual property (IP) position
- Gaining further information about the market for the new products or process
- Identifying potential licensees or opportunities for joint ventures

Not in partnership with industry



IPS / Mini - IPS

Aim - Transfer technology and expertise to the marketplace in partnership with industry

Collaboration

- With industry or another academic discipline

Range of activity – up to £450 over 3 years (£150k/year)

- Feasibility studies to prototyping
- Route to market must be considered

IPS is a State Aid Notified Scheme

- Funding can be given to industry partners in line with State Aid rules



IPS Fellowships

This is a dedicated KE/technology transfer role

- not a research fellowship

- Promote commercial exploitation and transfer of the technologies developed through STFC funding
- Host institution (or group of institutions) must be in receipt of substantial STFC funding
- Duration – up to 48 months
- STFC contribute 50% of cost – no maximum

www.stfc.ac.uk/ipsfellowships



STFC Impact Acceleration Account - Started Jan. 2015

- **Enable Technology Transfer Offices to support commercialisation of STFC science**
 - **£50k for 12 months to STFC academics via TTOs at top 22 universities**
 - Activities must support STFC-funded research outputs toward Impact
 - **Activities could include:**
 - Technology showcase to industry events
 - PoC funds
 - Technology audits / market surveys
 - Secondments to / from Industry
- www.stfc.ac.uk/IAA



CLASP

Annual calls in one of the STFC Futures Programme areas:
Energy, Environment, Healthcare and Security

- ❑ **Two stage application process (Launch – 20 May 2015)**
 - **Two page technical outline** should include impact, timescales, markets and work plan (**Deadline Sept. 2015**)
- ❑ **Shortlisted applicants**
 - **Will be invited to develop full proposals** with assistance and advice from STFC Innovations staff and panel members.
 - **Will be required to present** their final proposals to the Evaluation Panel
- ❑ **Typically £1.5M STFC funding available per call**
 - Any size of project
- ❑ **Industry can be included** in a project offering in-kind support or as a subcontractor for key tasks



Global Challenge Programme

Applying STFC-funded science to provide solutions to the Global Challenges in Energy, Environment, Healthcare, Security

- **Concepts:** call for **small scale demonstrator/proof of concept projects - (up to £50k)** – **previous deadline ~ October 2014 - £500k was available**
- **Networks:** creating new multidisciplinary research communities (**call: 2015**)
 - Advanced Radiotherapy Network – in development**
 - SEREN - Space Weather Network
 - GeoRepNet – Geological Repository Network
 - EnvRadNet – Environmental Radioactivity and the Environment
 - Network in Battery Science and Technology
 - Bioinformatics & Environmental Network
 - Network on Tropospheric Ozone
- **Studentships:** building capacity through interdisciplinary research training to support the transfer of research, science and technology

❖ www.stfc.ac.uk/2938.aspx



Science & Technology
Facilities Council

Global Challenge Network Call

Deadline 11 June 2015

Information for potential applicants

- ❖ STFC is inviting applications for Global Challenge Networks that will **create and enable interdisciplinary communities** at the STFC-Global Challenge interface focused on addressing user needs, including those of Government departments, Government agencies, industry and other academic communities. Proposals must address the application of STFC capability to Global Challenge areas under one or more of four themes:
 - Energy
 - Environment (including food security)
 - Healthcare
 - Security (including resilience)
- ❖ **Contact:** Katharine.Hollinshead@stfc.ac.uk



Science & Technology
Facilities Council

Global Challenge Programme - Funding Model (All funding at 80% FEC)

	Exploration and interdisciplinary community building	Research & early stage innovation	Consolidation	Commercialisation
Network Awards (Targeted or responsive)	Global Challenge Network 2 – 3 years, up to £80k per year Interdisciplinary activities at the STFC-Global Challenge interface e.g. workshops, short training courses, travel awards, case studies, fact sheets, position papers, market research			
	Global Challenge Network+ 3 – 4 years, up to £300k per year As for Global Challenge Network plus funding for proof of concept projects, scoping studies, discipline hopping activities, studentships, sandpits			
		Follow on Network 1 – 2 years, up to £200k per year Targeted projects to maximise the impact of earlier Network or Network+ activities		
Responsive Awards	Global Challenge Exploration Up to 3 months & £10k to £20k depending on activity (workshops, scoping studies) Exploration of STFC-Global Challenge interface (calls on a 3 monthly basis)			
		Global Challenge Concepts Up to 12 months & £50k Interdisciplinary proof of concept projects		
			CLASP Timescale and resources necessary for the work Development of technology demonstrators and industry-ready prototype systems	
RCUK Programmes	Global Challenge Partnerships Focus, funding and duration according to individual programmes			

RSE Enterprise Fellowships

The Royal Society of Edinburgh

- **Support to a researcher /entrepreneur to commercialise any STFC funded research – annual call**
- A year's salary to develop your commercial proposition
- Business training to help you to prepare a viable business plan
- Access to networks of mentors, business experts and professional advisors
- **Spin out companies formed with help from Fellows**
 - IKinema (Surrey)
 - Cella Energy (STFC)
 - KEIT (STFC)



STFC CASE Studentships

Collaborative Awards in Science and Engineering

Provide support for PhD students in collaboration with an industrial partner

- Collaborative training projects delivering research of value to the company
- **Knowledge exchange between commercial collaborators and academic research groups - not just access to data, samples and equipment**
- Enhanced training experience for students through spending time in different research environments and industry
- www.stfc.ac.uk/1468.aspx



Science & Technology
Facilities Council

STFC Innovations Club

- **Set up to promote the opportunities for Knowledge Exchange** between STFC funded researchers, academics and industry
- **Organise workshops and events** (free to attend) to learn about recent developments and encourage networking and collaboration
- **Newsletter (monthly)** - provides organisations with information about funding calls and the opportunity to search for potential collaborative partners
- **Established business network** includes many sectors including defence, medical, security, aerospace, space sector...~ 1500 members
- **Membership is free**
- **www.stfc.ac.uk/innovationsclub**



STFC Innovations Club

- **Examples of events - audience academics and industry ~100**
 - Novel Magnetic Sensors and their Applications – 12 March 2015
 - Industrial Applications of Astrophysics/Astronomy - 25 June 2014
 - Cherenkov Telescope Array (CTA) Event - 20 March 2014
 - Nuclear Physics Technology Showcase – 26 September 2013
 - The Square Kilometre Array (SKA) Workshop - 20 March 2013
 - SpaceTech 2012 - 5 & 6 November 2012
 - **www.stfc.ac.uk/innovationsclub**



Working with our Innovation Partners



PraxisUnico.



Find Your Collaborative Partners

- **Website**
RCUK and TSB – [‘Gateway to research’](#)
- **Designed for companies to find**
 - potential collaborative partners and
 - new ideas
- **Contains details of all grants given by RCUK and TSB since 2007**
- ❖ <http://gtr.rcuk.ac.uk/>





www.stfc.ac.uk/commercialisation

www.stfc.ac.uk/workingwithindustry

Thank you