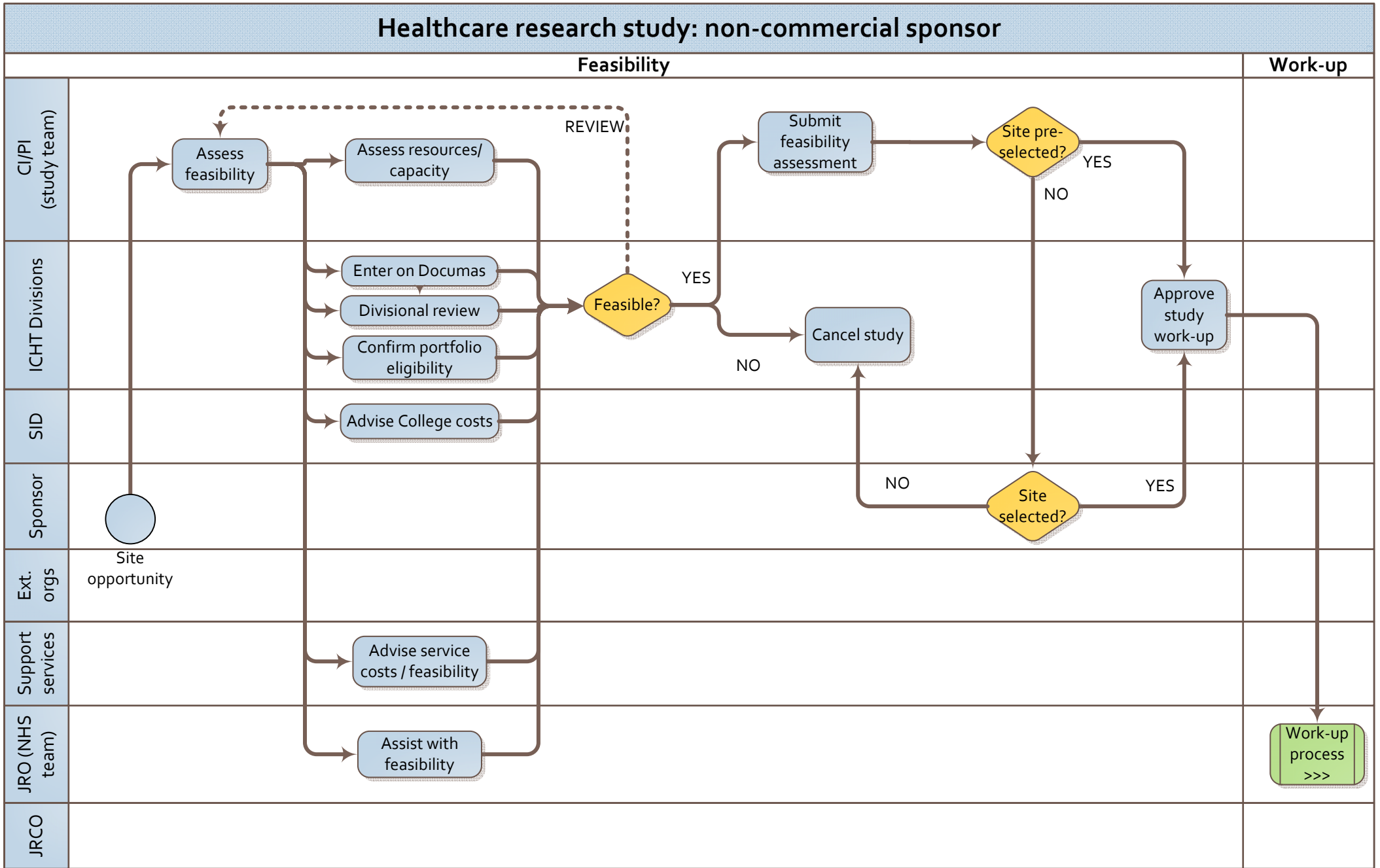


Healthcare research study: non-commercial sponsor

	FEASIBILITY	WORK-UP	GOVERNANCE	RECRUITMENT
	Develop proposal Assess feasibility Apply for funding	Coordinate work-up Submit to IRAS	Run governance checks Issue Trust permission	Initiate site and recruitment FPFV Close site
C/PI (study team)	Assess feasibility	Submit forms to IRAS Prepare documentation Plan study logistics	Finalise study logistics Brief trial team	Initiate recruitment Capture accruals Close site Report / archive / publish
ICHT Divisions	Divisional review Confirm portfolio eligibility	Authorise IRAS submission	Reaffirm feasibility	
SID	Assess College costs			
Sponsor	Select study site			Site initiation
Ext. orgs	Select study site		Issue approvals, eg REC	
Support services	Advise on costs/feasibility	Process support request	Confirm service approval	
JRO (NHS team)	Assist with feasibility	Agree contract Coordinate study work-up	Confirm funding	Activate funding
JRCO		Arrange peer review Receive valid IRAS	Check external approvals Check internal approvals Issue Trust approval	Monitor trial Review amendments

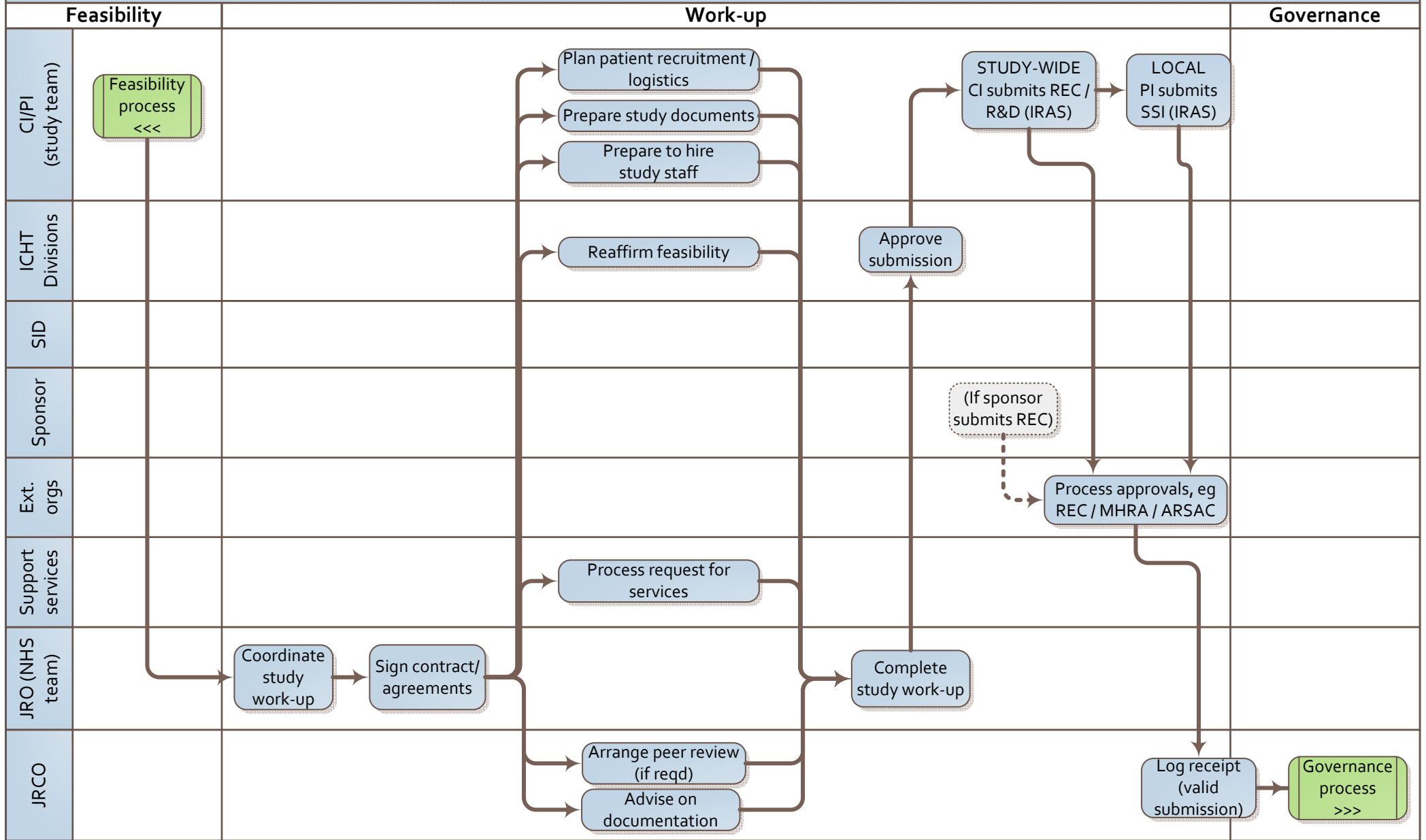




RETURN TO MAP OVERVIEW

Milestone
 Decision
 Station (task)

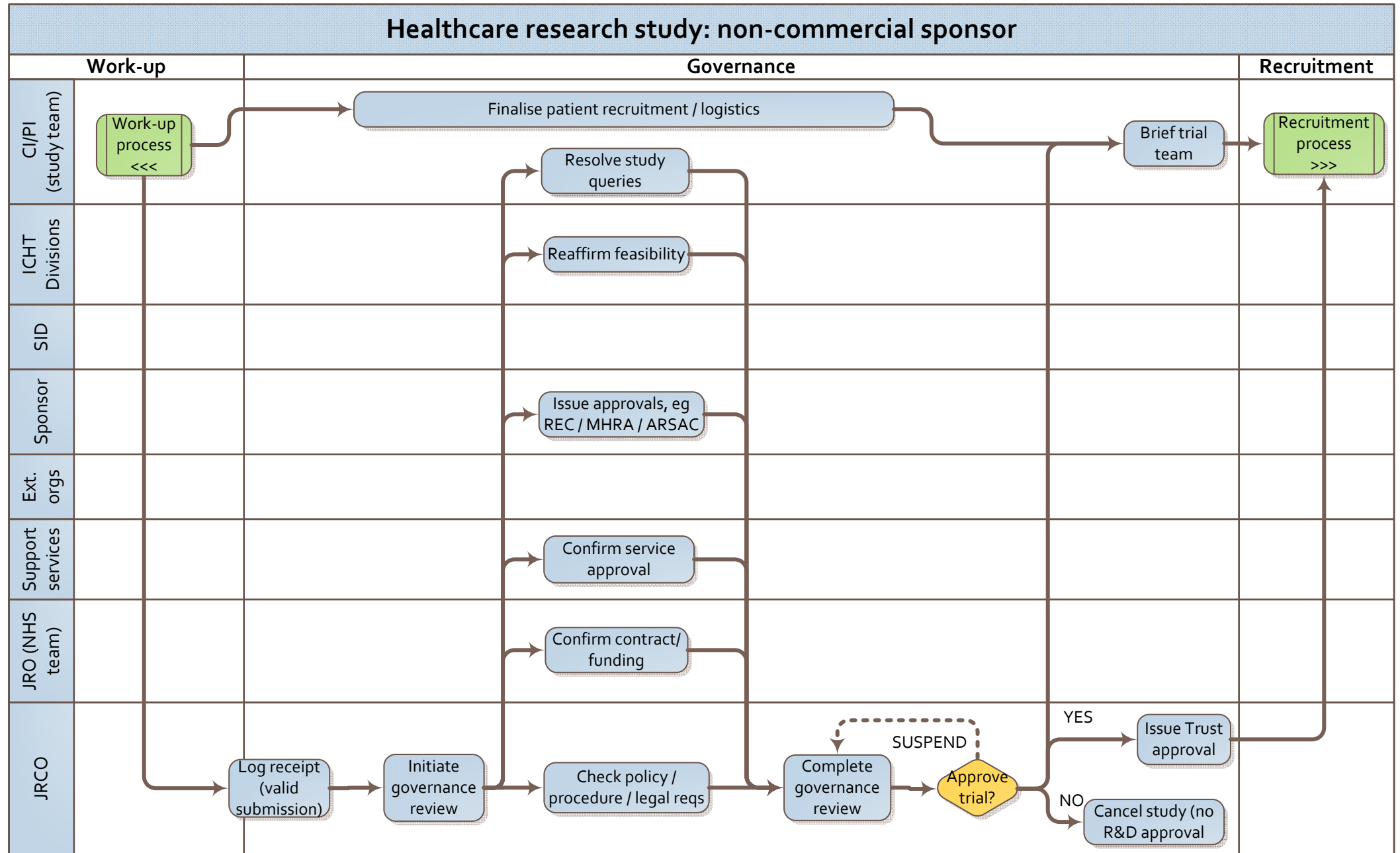
Healthcare research study: non-commercial sponsor



RETURN TO MAP OVERVIEW



DAY 0



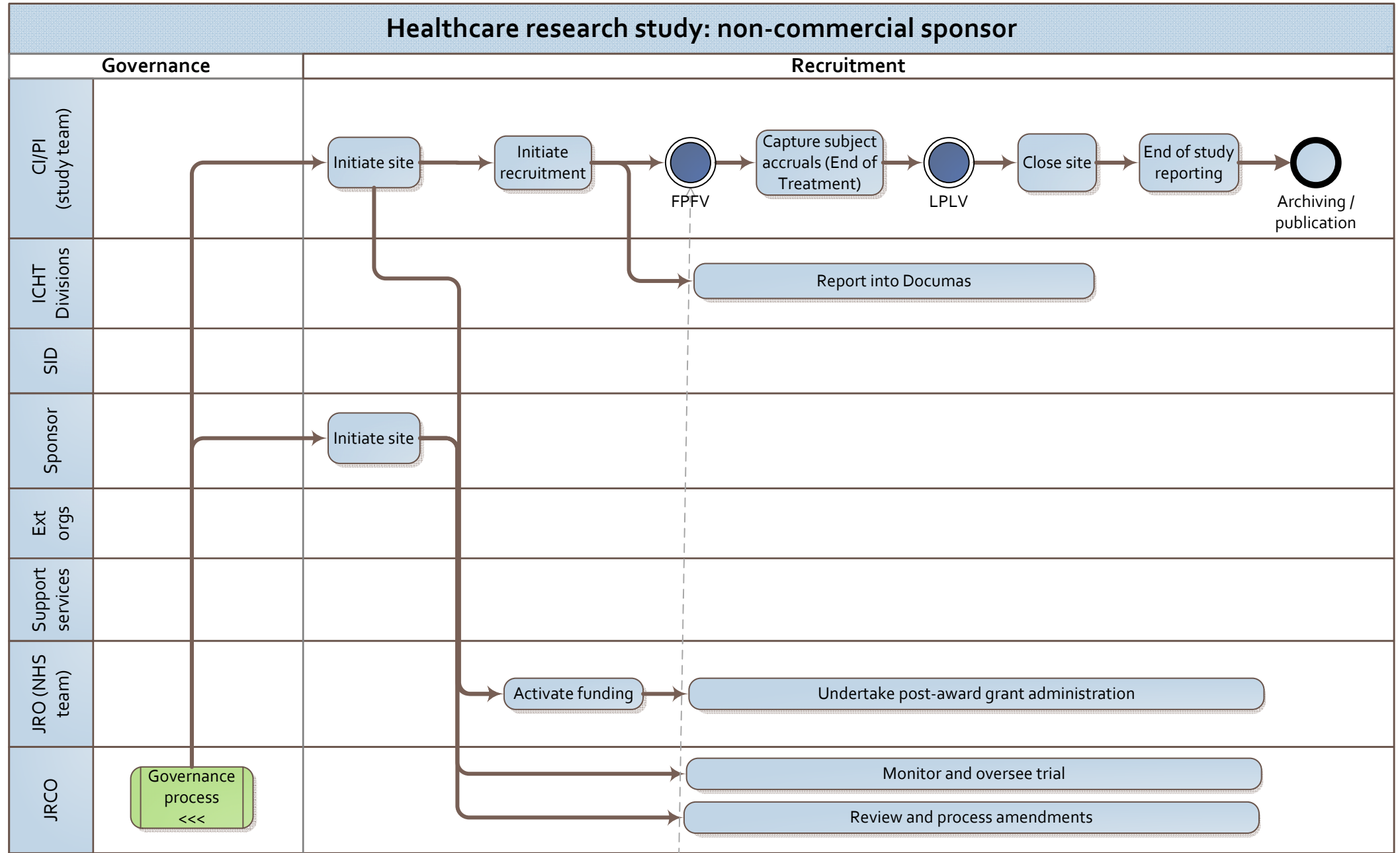
[RETURN TO MAP OVERVIEW](#)



20 days

30 calendar days





RETURN TO MAP OVERVIEW

