



Clinical Innovation and Entrepreneurship

PROFESSOR ALISON METCALFE

OVERVIEW

- **Moving beyond research: The importance of innovation and entrepreneurship.**
- **Clinical academic roles in creating the culture for innovation and entrepreneurship.**
 - **General discussion in how we facilitate innovation and entrepreneurship.**

Why do we need an innovation and entrepreneurial approach?

Healthcare Workforce

Antibiotic resistance

Climate Change

Pandemics

Ageing Population

Cyber-attacks

War and civil unrest

Geographic migration

Mineral Scarcity

Food Security

Economic decline / inequality

Social and digital media influences

Extremism & Terrorism

Risks from Artificial Intelligence





NEW

ОБЪЯВЛЕННЫЕ

NEW

ОПОРТУНИТИЕС

Digital Technology & AI



Bioinformatics



Personalised medicine / Genomics

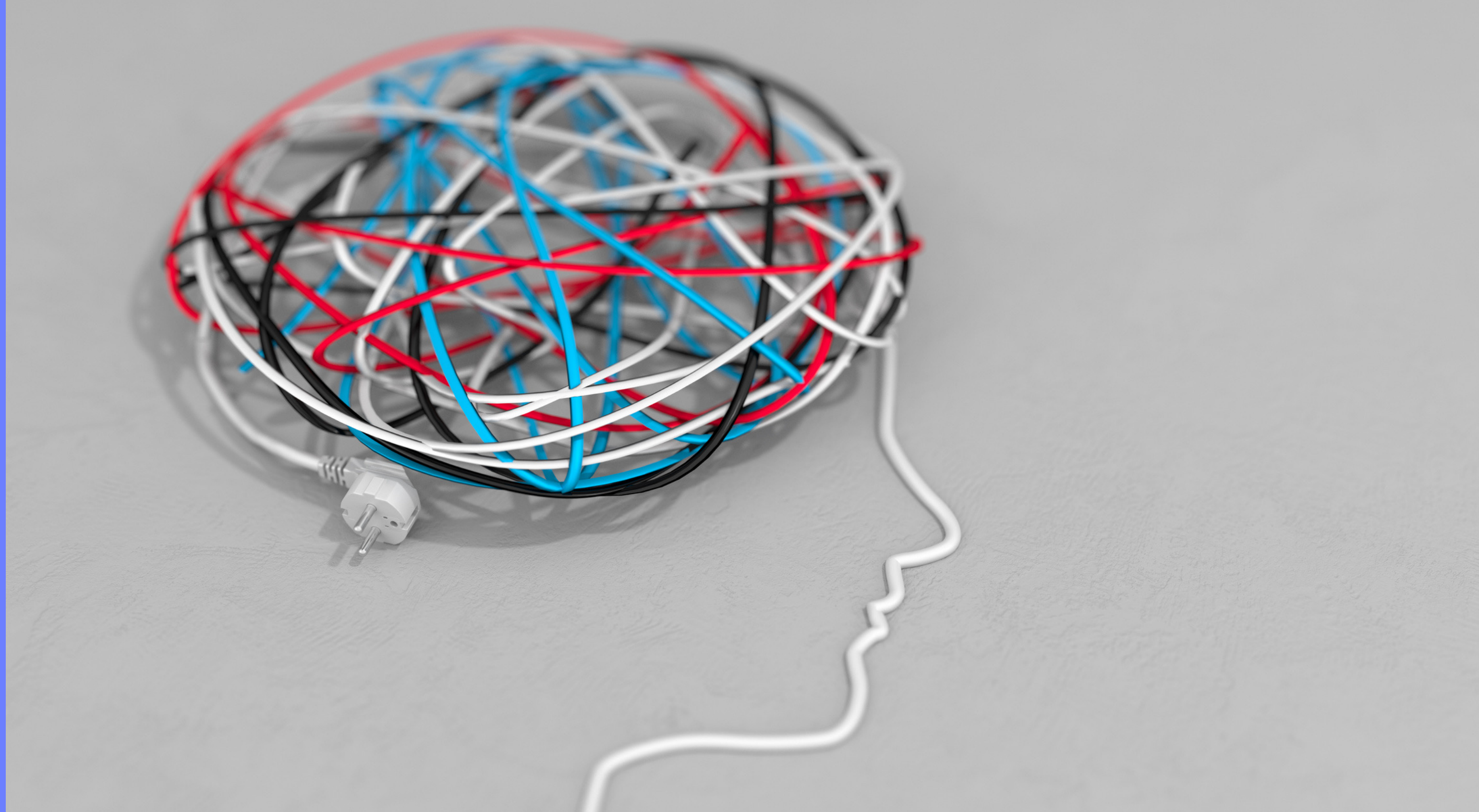




How do we make the most of these opportunities?

Multi- disciplinarity





Relentless focus on the problem
Problem as defined by clients / patients

A photograph of ten light-colored wooden blocks arranged in a horizontal line on a white surface. Each block has a dark brown letter cut into it, spelling out the word 'CURIOUSITY'. The letters are in a bold, sans-serif font. The blocks are slightly uneven in height and are surrounded by other wooden blocks, some of which are partially visible at the top and bottom edges of the frame. The background is a plain, light-colored surface.

CURIOUSITY

Drives collaboration, sharing and learning.

Needs to be nurtured and encouraged to assist patients and colleagues in coping with change and embrace transformation.

**Move beyond research:
Research as the tool not
the output**





Leadership:

**Nurture and create the
context and environment
for a growth mindset to
flourish**

Summary

To finalise: I think we have to find ways of researching more rapidly in healthcare and clinical practice – make it part of the whole consultation process so that we can learn and understand the problems we are solving much more quickly and efficiently.

This requires us to have new mechanisms of research governance including research ethics and also a different approach to leadership and collaboration in healthcare.

Thank you for listening

Let's discuss?