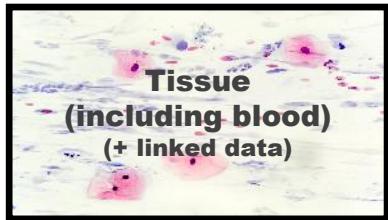


# Bioresources for researchers

## Research need



**Imperial Clinical Analytics, Research and Evaluation (iCARE)**

High performance data analytics environment at Imperial College Healthcare NHS Trust (ICHT) hosting:

- ICHT Patient Data - de-identified acute care granular EPR level data from patients across the Trust's range of acute and specialist services
- Some NIHR Health Informatics Collaborative (HIC) datasets

[Apply](#)

**NIHR** | Imperial Biomedical Research Centre

**The Royal Marsden Biobank**

Tissue bank at The Royal Marsden NHS Foundation Trust holding a range of biological samples from cancer patients (e.g. frozen and FFPE tissue, whole blood, serum, plasma, extracted DNA, viable cell pellets)

- Biospecimens with linked data from adult cancer patients
- RMH patient Data – access to de-identified acute care granular EPR level data via the Biobank

[Apply](#)

**NIHR** | Biomedical Research Centre at The Royal Marsden and the ICR

**Imperial College Health Tissue Bank (ICHTB)**

Tissue bank at ICHT with:

- Biospecimens with linked data. Includes a number of sub-collections and a range of biological samples (e.g., tissue, blood, urine, pleural, ascetic fluid)
- Consent to Contact linked to ICHTB biospecimens

[Apply](#)

**NIHR** | Imperial Biomedical Research Centre

**Imperial Health Knowledge Bank (IHKB)**

Tissue bank at ICHT accessing patients from across ICHT's acute and specialist service providing:

- Biospecimens with linked patient data
- Consent to Contact register (patients in NWL and beyond)

[Apply](#)

**NIHR** | Imperial Biomedical Research Centre

**Discover-NOW**

Health Data Research Hub for Real World Evidence

Consent-to-Contact register of NWL patients from primary and secondary care (includes patients from ICHT and Chelsea and Westminster NHS Trust)

[Apply](#)

Data De-identified patient data from the Whole Systems Integrated Care (WSIC) database for NWL patients (e.g., primary, acute, mental health and social care data)

[Apply](#)

Other patient data resources beyond NWL

HDR UK [Research Innovation Gateway](#)  
(> 600 UK health datasets)

+ NIHR [Health Informatics Collaborative \(HIC\)](#)  
(Acute NHS care data from selected English Trusts for a range of disease areas; some datasets hosted in ICHT's iCARE)