

Subject:

FW: YPAN Newsletter April 2022



Welcome to the April 2022 issue of the Imperial College, London Young Persons' Advisory Network Newsletter

This is the first newsletter of 2022 and we wanted to share upcoming opportunities to get involved in health research, the latest research updates from our Centre and upcoming events which you might be interested in joining.



NIHR | Imperial Biomedical Research Centre

**Science of Digestion Community Event
Tuesday April 26th 2022 (5.30pm to 7.30pm BST)**

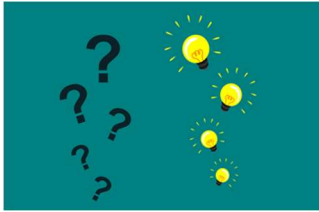
This exciting free event being organised by [Guts UK](#) and the [NIHR Imperial Biomedical Research Centre](#) is open to anyone with an interest in gut health. The event will give you the opportunity to learn about the hidden world inside you, discover the latest research developments, meet the experts, ask your questions about gut health and share your views on gut health research.

- "500 functions of the liver"
- "Your gut microbes: not bad, just misunderstood"
- "Irritable Bowel Disease – Where have we come from and where are we going?"
- "Diet and your Colon: What's Important?"

Venue: Victoria Hall, Ealing Town Hall Ealing Broadway, Ealing, London W5 2BY

[Click here to find out more and register to attend on Eventbrite](#)

Involvement and engagement opportunities



Are you interested in joining a project on young people's mental health?

The Anna Freud Centre is a national charity that specialises in supporting children and families' mental health and wellbeing. They are working with the University of Cambridge on a research project called Timely.

They are at the beginning of this project and want to hear the views of young people (aged 11 - 24), parents and guardians at an early stage as well as keeping the general public informed about their project.

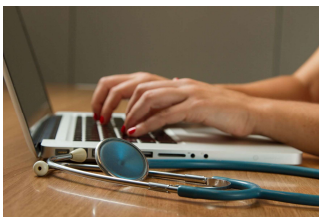
You can sign up to:

- Hear about opportunities to give your views and receive updates on the project. Everyone will have the option to receive vouchers for their participation.
- Become part of a co-creation group of young people, parents and carers who meet regularly to shape how we communicate about the project and how to share people's information safely. Everyone will have the option to be paid for their time.

To sign up please fill in [this short form](#).

You can opt out at any time, please see our privacy notice for more information. [Privacy notice: Timely](#)

For more information contact Timely1@annafreud.org



Contribute to the 11 to 25 Online Resource Hub at Imperial College Healthcare NHS Trust

The 11 to 25 Hub is a new online resource being developed by clinicians at Imperial College Healthcare NHS Trust to support, inform and educate young people transitioning from children's to adults' services

As part of the development of this hub the team are looking for short stories or voice notes sharing experiences of healthcare transition. These will be used as learning opportunities and short case studies on the hub.

Stories are being captured on an ongoing basis.

To find out more please contact Chris and Claudia at Imperial.11to25hub@nhs.net

Upcoming events



Great Exhibition Road Festival 18 - 19th June 2022

Come along to the Great Exhibition Road Festival for an annual celebration of science and the arts with free events for all ages.

Venue: Great Exhibition Road, South Kensington

Keep up to date: [Sign up to the Imperial events emails](#) to get updates about the Festival and other public events or follow us [@ExRdFestival](#) on [Instagram](#), [Facebook](#) and [Twitter](#) for the latest Festival news and events.

You can keep up to date with upcoming Imperial events on the [What's On page](#) and catch up on previous events on the [Imperial YouTube Channel](#)



Imperial Taster Lectures

Imperial taster lectures allow you to explore a subject area in more depth and experience what studying at Imperial is like. You can sample real lectures on our courses, including student teaching workshops and laboratory and practical sessions.

In each taster session, you'll meet our world-leading experts and have the opportunity to ask them any questions you have in a live Q&A.

Upcoming lectures:

26 April 13.00 to 14.00

Mechanical Engineering: demystifying design

5 May 14.00 to 15.00

Mechanical Engineering: demystifying thermofluids

9 May 12.00 to 13.00

Civil Engineering: water engineering for sustainable development

12 May 15.30 to 16.30

Bioengineering: a closer look at bioengineering

1 June 12.00 to 13.00

Civil Engineering: climate change resilient permeable infrastructure for a sustainable built environment

[Click here to find out more and register to attend here](#)



Pint of Science 2022

The [Pint of Science](#) festival aims to deliver interesting and relevant talks on the latest science research in an accessible format to the public – across bars, pubs, cafes, and other public spaces. We want to provide a platform which allows people to discuss research with the people who carry it out and no prior knowledge of the subject is required.

While the festival has been virtual for the past two years, they are hoping to be in person for their next run **9-11 May 2022**.

If you would like to be one of the Imperial College London volunteers sign up [here](#) for 2022. To hear more about the upcoming events follow the Pint of Science UK [here](#).

Public involvement and engagement news & updates



New podcast showcasing PERC HIV Peer Research

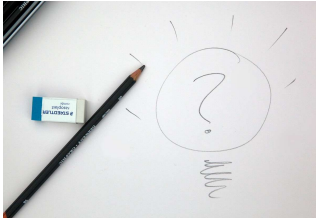
Vas Papageorgiou (PhD student at the Patient Experience Research Centre) was invited by Positively Effect (a HIV non-profit organisation in Canada) to share her experiences of conducting a HIV peer research project exploring the impact of COVID-19 on people living with HIV in the UK as [part of their podcast series, 'Pozcast'](#).

On the podcast she is joined by Husseina Hamza one of the peer researchers on the project, who is also a community advocate, and the co-founder and director of Red Ribbon Living Well, a volunteer-led community organization for people living with and affected by HIV. As part of the peer research project, Husseina undertook research training which enabled her to conduct interviews with people living with HIV as part of the study and was also involved in

the analysis of the interview transcripts. She is now helping to share the learnings and findings from the study.

The episode title is *Peer Research across the pond: a fascinating UK study exposes barriers and bias bolstered by the pandemic* and is available via the button below.

[Listen to the podcast](#)



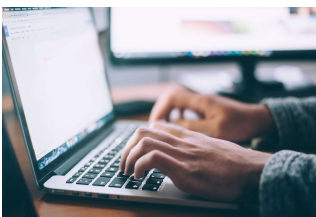
New Paper: Young people's experiences of COVID-19 messaging at the start of the UK lockdown: lessons for positive engagement and information sharing

To reduce COVID-19 infection rates during the initial stages of the pandemic, the UK Government mandated a strict period of restriction on freedom of movement or 'lockdown'. For young people, closure of schools and higher education institutions and social distancing rules may have been particularly challenging, coming at a critical time in their lives for social and emotional development. This study explored young people's experiences of the UK Government's initial response to the pandemic and related government messaging.

This study combines data from research groups at the University of Southampton, University of Edinburgh and University College London with thirty-six online focus group discussions conducted with 150 young people.

To read more about the study and results please click the button below

[Read the paper](#)



Want to learn more about public involvement in research?

Sign up to our online course on [Public Involvement in Research](#) on Coursera. The course is aimed at researchers but is also suitable for patients and the public to complete. The course is set over four weeks (although you can go at your own pace) and introduces the concepts of public involvement and co-production in health research as well as discussing in more detail the role of public involvement across the research cycle.

[Find out more](#)



VOICE is an online platform which brings together members of the public, patients and carers who want to influence and inform UK health research and innovation. You will find opportunities for involvement, engagement and participation as well as upcoming events relating to health and social care.

To keep updated with the latest VOICE opportunities and help to influence and inform our research, sign up today via the button below

[Join VOICE](#)

Contact us:

publicinvolvement@imperial.ac.uk

Our mailing address is:

Patient Experience Research Centre
St Marys Campus
Norfolk Place
London, W2 1PG

Want to change how you receive these emails?

You are receiving this email as you signed up to the Imperial College London Young Persons' advisory Network mailing list. To unsubscribe from these updates (or edit your preferences), please reply to this email with 'UNSUBSCRIBE' (or 'EDIT') in the subject line.

