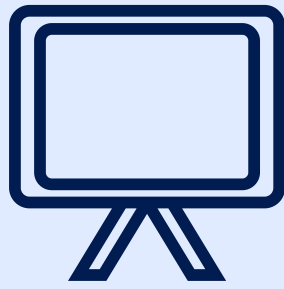


## USER'S GUIDE:

# PEER RESEARCH TRAINING RESOURCE



## WHY WAS THE RESOURCE DEVELOPED?

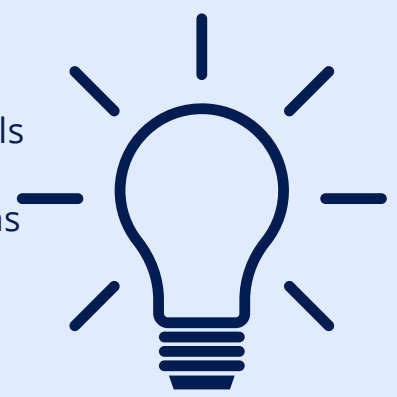
A series of online training sessions were initially developed to induct and train peer researchers for a participatory research study on COVID-19 experiences among people living with HIV.

The team realised that these training sessions could be adapted into a more general resource to save time and help others wanting to train and involve people with lived experience as peer researchers in their own projects/activities.

## HOW WAS THE RESOURCE DEVELOPED?

We spoke with a range of individuals with extensive experience in peer research and collated knowledge across sources. Their details are outlined in our acknowledgements section and referenced within the training resource. We also adapted the training sessions to suit the training needs\* of our peer researchers.

**\*We asked all peer researchers to complete a skills audit at the start of the project to identify training needs.**



## WHO IS THE RESOURCE FOR?

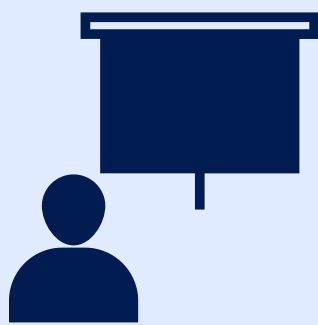
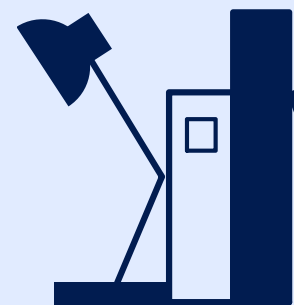
We have created the resource to be used by academics and public involvement practitioners interested in training people with lived experience in research methods (specifically qualitative/interview-based studies).

The resource is primarily focused on research taking place in the UK, but can be adapted for international audiences. This resource was developed for research and involvement which all took place online.

## WHAT TOPICS ARE COVERED?

There are slides for four separate training sessions (and one induction meeting). The slides cover training on:

- Research Integrity: Ethics and Research Data Management
- Qualitative Research and Public Involvement
- Interviewing Skills and Emotional Wellbeing
- Analysing Interview Transcripts



## HOW DO I USE THE PACK?

**Simply download the resource. You can then use and adapt this how you would like and to fit with your own project/activity.**

Each training session was designed to be 2-hours long (with a 10 minute break). Any material that we suggest should be edited is highlighted in yellow.

Please ensure you acknowledge the pack by using our suggested citation (see below)

## FURTHER QUESTIONS?

Please contact Vas Papageorgiou, who designed and led this project at [vasiliki.papageorgiou17@imperial.ac.uk](mailto:vasiliki.papageorgiou17@imperial.ac.uk) and/or contact the Patient Experience Research Centre via: [publicinvolvement@imperial.ac.uk](mailto:publicinvolvement@imperial.ac.uk)



**A HUGE THANK YOU TO OUR CO-RESEARCHERS AND THOSE WE SPOKE TO WHEN PREPARING OUR TRAINING. ALL OTHER CONTRIBUTIONS ARE OUTLINED IN THE SLIDES.**

**THIS WORK WAS SUPPORTED BY IMPERIAL COLLEGE LONDON SOCIETAL ENGAGEMENT TEAM 2020 RAPID RESPONSE SEED FUND, NIHR IMPERIAL BIOMEDICAL RESEARCH COUNCIL AND AN ESRC LISS-DTP CASE STUDENTSHIP.**

VIEW THE PACK HERE:

V Papageorgiou, J Bruton, H Johnson, H Ward. Peer Research Training Resource (2022). Patient Experience Research Centre: Imperial College London. DOI: 10.25561/94819

