

Our strategic challenges for 2019-2024

Strategic Challenges

To become an exemplar of a 'well-led, well-run' Institute; one with a common and shared purpose, and where every member is valued and supported

To harness our collective expertise to tackle the 'grand challenges' in heart, lung and vascular research

To attract the best and brightest minds and to deliver outstanding training and mentoring for both clinical and non-clinical scientists

To be a national resource and be outward facing

To increase our collaborations with international agencies, patient-led organisations, the pharmaceutical industry and other Faculties at Imperial College London

Valuing education and continuing to improve the student experience at all levels

To consolidate our research on the Imperial West Campus thus generating a single and critical mass of researchers supported by world-class research facilities and capabilities

To leverage the very best from our outstanding NHS partners, and through the NIHR Imperial College Biomedical Research Centre, deliver improved health and well-being

The NHLI is involved in the following UK Strategic Initiatives and Imperial College Networks & Centres of Excellence:

Antimicrobial Research Collaborative @ Imperial
imperial.ac.uk/arc

Centre for Blast Injury Studies
imperial.ac.uk/blast-injury

Centre for Cardiac Engineering
imperial.ac.uk/cardiac-engineering-centre

Institute of Chemical Biology
imperial.ac.uk/chemical-biology

Centre for Drug Discovery Science
imperial.ac.uk/drug-discovery-science

Centre for Integrative Systems Biology and Bioinformatics
imperial.ac.uk/integrative-systems-biology

EPSRC Centre for Mathematics of Precision Healthcare
imperial.ac.uk/mathematics-precision-healthcare

Centre for Translational Nutrition and Food Research
imperial.ac.uk/nutrition-and-food-centre

Air Quality Network
imperial.ac.uk/air-quality

Cancer Technology Network
imperial.ac.uk/cancer-technology

Microbiome@Imperial Network
imperial.ac.uk/microbiome-network

Stem Cell and Regenerative Medicine Network
imperial.ac.uk/stem-cell-regenerative-medicine-network

Network for Vaccine Research
imperial.ac.uk/vaccine-research-network

Vascular Science Network
imperial.ac.uk/vascular-science-network

Wound Healing and Regeneration Network
imperial.ac.uk/wound-regeneration

Asmarley Centre for Genomic Medicine
imperial.ac.uk/asmalley-centre

Asthma UK Centre in Allergic Mechanisms of Asthma
asthma-allergy.ac.uk

BHF Cardiovascular Regenerative Medicine Centre
imperial.ac.uk/bhf-regenerative-medicine

BHF Centre of Research Excellence
imperial.ac.uk/bhf-research-excellence

ElectroCardioMaths Programme
imperial.ac.uk/electrocardiomaths

NIHR Health Protection Research Unit in Respiratory Infections
imperial.ac.uk/medicine/nihr-hpru-respiratory-infections

National Centre for Mesothelioma Research
imperial.ac.uk/national-centre-mesothelioma-research

Strategic Research Centre for Cystic Fibrosis EpiNet (with Cystic Fibrosis Trust)
imperial.ac.uk/src-cf-epinet

Strategic Research Centre for Pseudomonas Infection in Cystic Fibrosis (with Cystic Fibrosis Trust)
imperial.ac.uk/src-pseudomonas-infection

Imperial College London

Follow @ImperialNHLI
www.imperial.ac.uk/nhli

Our work is supported by the **National Heart and Lung Institute Foundation**

Imperial College London

National Heart and Lung Institute

Strategic plan 2019-2024

The National Heart and Lung Institute (NHLI) is part of the Faculty of Medicine at Imperial College London

The NHLI:



Is the UK's largest heart and lung research Institute, conducting world-leading, innovative basic and translational research



Is committed to developing new treatments and cures for heart, lung and vascular diseases, which together kill 1 in 2 people in the UK and worldwide



Is global in its outreach and influence with international collaborations and partnerships



Has over 500 staff, including 130 Principal Investigators, 3 Fellows of the Royal Society, 8 NIHR Senior Investigators and 20 Fellows of the Academy of Medical Sciences



Is a major teaching centre for medical undergraduates and cardiovascular and respiratory scientists; with over 200 PhD or MD students and 150 MSc students



Holds over £170M of active grants



Hosts a number of UK Centres of Excellence including the Asthma-UK Centre, BHF Centre for Research Excellence, BHF Cardiovascular Regenerative Medicine Centre and National Centre for Mesothelioma Research



Is committed to enhancing diversity, in all its forms, and supporting, developing and valuing its staff



Works with a number of outstanding partner hospitals including the Royal Brompton and Harefield, St Mary's, Hammersmith, Charing Cross and Royal Marsden; part of the UK's largest NIHR Biomedical Research Centre at Imperial College London

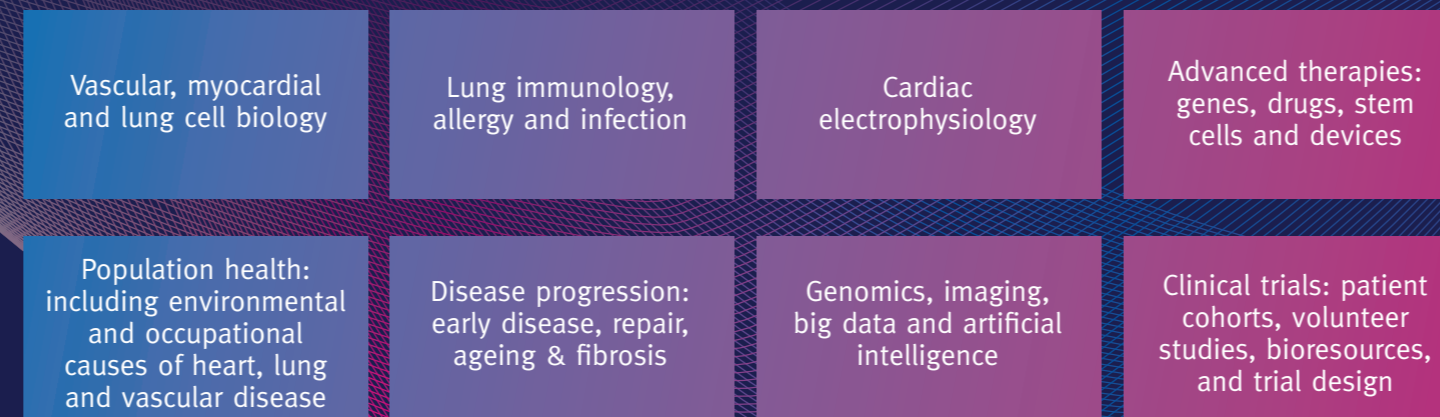
Mission

The mission of the National Heart and Lung Institute is to investigate the causes of heart, lung and vascular diseases in order to prevent, monitor and treat these disorders

Aim

Our aim is to reduce death and suffering from heart, lung and vascular disease

The NHLI undertakes world-leading research in:



Our vision for 2024

We will:



Remain a UK and global centre of excellence for heart, lung and vascular research



Retain our place as the UK's premier academic environment for educating and training the next generation of basic, clinical and applied heart, lung and vascular scientists



Promote academic excellence and innovation



Offer world-class research facilities and patient cohorts



Work effectively with our NHS and industry partners



Adopt collaborative and inter-disciplinary approaches to research at all levels



Remain patient-focused



Be a fantastic place to work, valuing diversity, academic freedom and innovation