

QUICKSTART GUIDE: SVI / HUYGENS DECONVOLUTION SOFTWARE

Booking Huygens.....	1
Access to the server.....	1
Access to your data	3
Starting the software	4
Ending your session	4
Access to the Huygens support website.....	5
Useful Tutorial videos.....	5
Remote Desktop settings.....	6

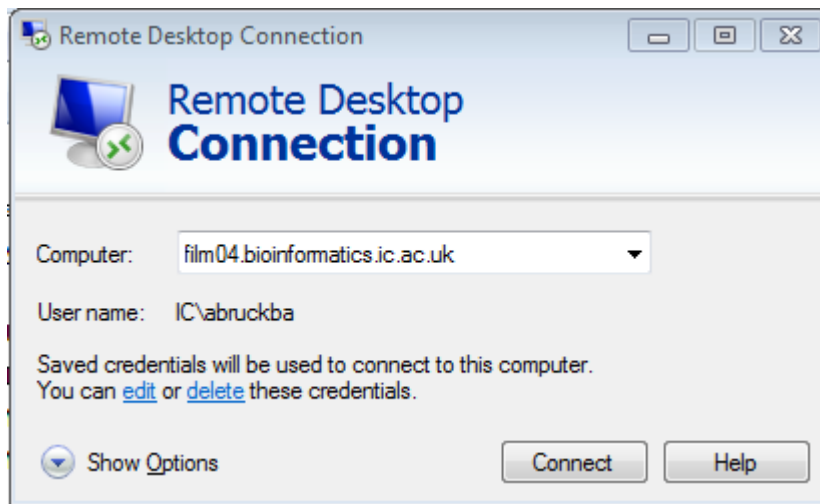
Booking Huygens

FILM users have to **contact FILM staff** via film-service@imperial.ac.uk to be added to the Huygens users list to access the server. Then you can **book Huygens using the PPMS 'FILM Huygens' calendar**, we have licenses for two users using the software simultaneously, but it will affect the speed.

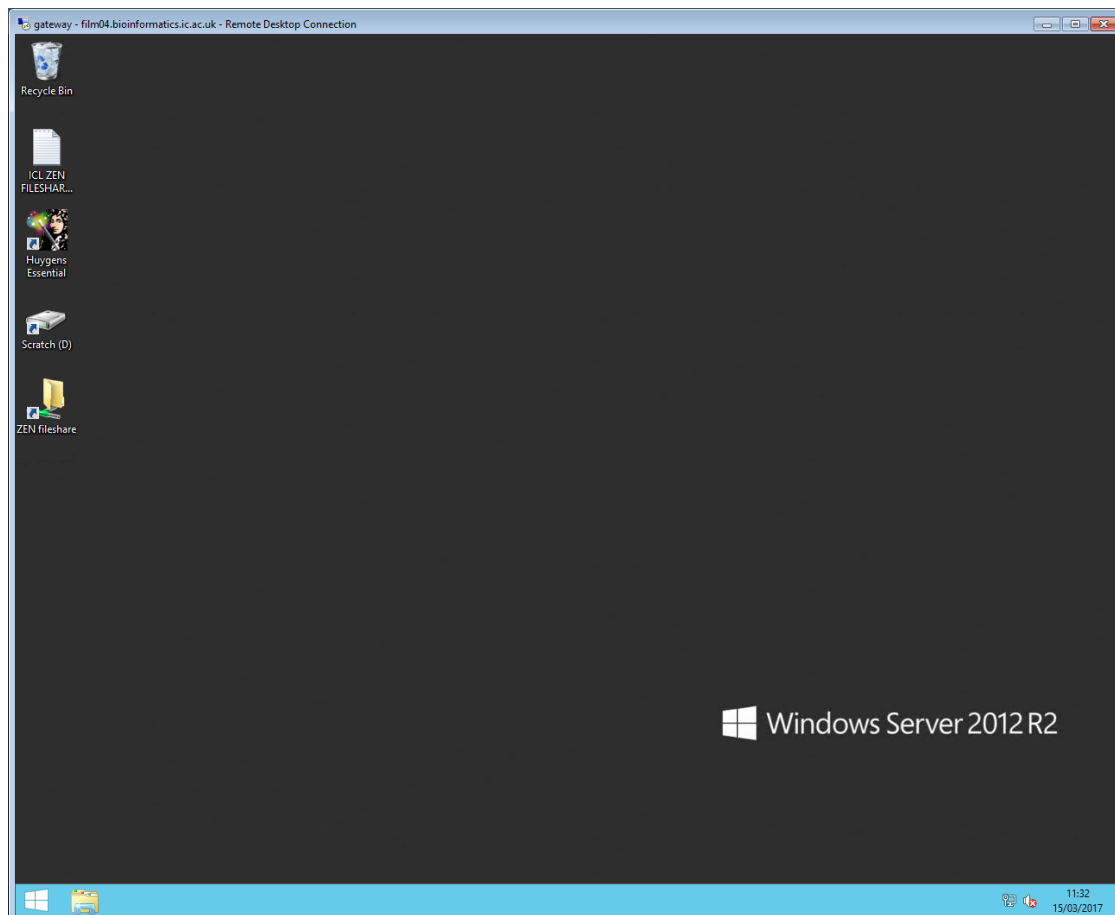
Access to the server

Access to the software is available using a Windows Remote Desktop session to access the server hosting the software. Clients are available for Windows, Mac and Linux operating systems

1. From the 'Start' menu, select 'Remote Desktop Connection' (if you don't see this search for it or follow the instructions here: <https://www.imperial.ac.uk/admin-services/ict/self-service/connect-communicate/remote-access/remotely-access-my-college-computer>)
2. Enter the name '**film04.bioinformatics.ic.ac.uk**' in the 'Computer' field of the 'Remote Desktop Connection' window and click the connect button. For more settings see further below.



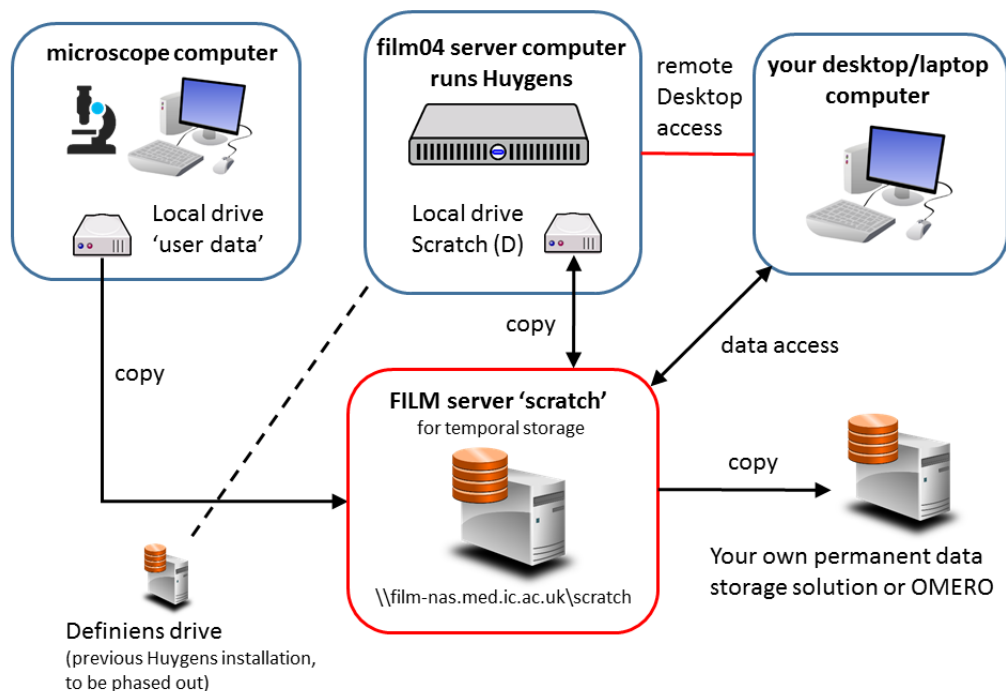
3. You will be asked to 'Enter Your Credentials'. **Enter your normal College logon username and password, then click 'OK'.**
You should now see a desktop session on the server on your local display.



Access to your data

1. Once you are logged in you can connect to the FILM scratch server to access your data. Open the windows File Explorer, click on This PC on the left, open the ribbon at the top (little arrow on the top right next to the question mark), Map network drive [\\film-nas2.med.ic.ac.uk\scratch2](https://film-nas2.med.ic.ac.uk/scratch2), reconnect at login and create a shortcut on your Desktop, you should have to do this only once.
2. **IMPORTANT:** Copy your data from the FILM scratch server to your directory on the D: drive of the computer, this directory is created automatically with your log on. Reading and writing to the D: drive is faster and more secure than directly from scratch. **IMPORTANT: Copy the files back at the end of the session and delete files from D: drive to make space for other users.** **NOTE:** data will be deleted without notice when the drive is full
3. **If you have used Huygens on our old computer before** you can connect to your existing directory on the Definiens drive using the definiens logon (Username: 'definiens', Password: 'definiens') using the same procedure as above for the scratch drive [\\cell.bioinformatics.ic.ac.uk/definiens](https://cell.bioinformatics.ic.ac.uk/definiens)

We copied the templates from the previous Huygens installation to D:\Huygens, you can copy these to your local directory C:\Users\

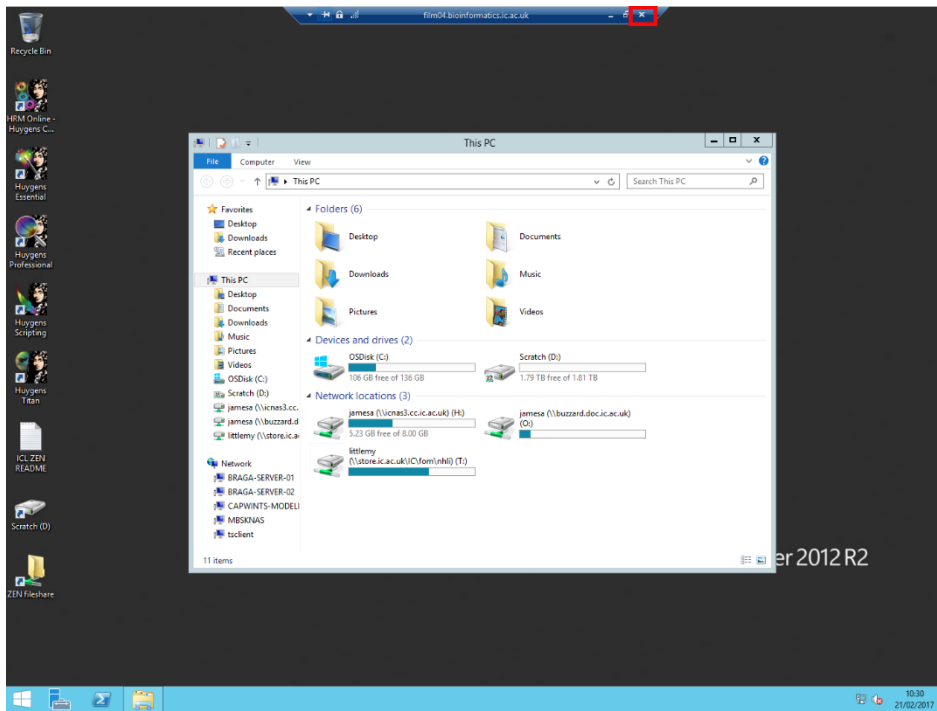


Starting the software

1. Launch **Huygens Essential** software
2. **Huygens usage is monitored and charged at the usual software rate**, which you can find here:
<http://www.imperial.ac.uk/medicine/facility-for-imaging-by-light-microscopy/charges/>
3. Usage is monitored automatically using the login information of the Huygens software, **you need to close the software and log off when you are finished** to avoid charges and give other users the opportunity to use the software. **NOTE: data older than 3 months will be deleted without notice; transfer your data to your own storage and delete it from the definiens drive once done.**

Ending your session

1. There are two ways to end your session:
 1. Sign out: Click on the Windows icon in the task bar, click on your user name in the upper right corner and click on 'sign out' (alternatively click ctrl + alt+ end and select sign out) This ends your session.
 2. Disconnect: Click on the cross on the right in bar on top of your session window (marked red in the picture below). Your session will continue to run and you will be able to log on to the same session again later. **IMPORTANT: If you run Huygens normally (not in batch mode) your session will end after 15 mins and your data will not be saved.** This will prevent you from being charged when you accidentally disconnect instead of signing out. However, **if you run a batch process, Huygens will continue to run and only shut down when the batch is finished.** Your data will be saved as usually when running the batch.
2. **IMPORTANT: When the computer you are using to connect to Huygens goes into power saving mode, this will disconnect your session.** You can run an app like caffeine <http://www.zhornsoftware.co.uk/caffeine/> to keep your computer awake or ask ICT for a permanent solution.



Access to the Huygens support website

The SVI website contains extensive support, manuals, tutorials etc. To login, use username <ic-film> and password <film-user>.

Useful Tutorial videos

[Huygens Microscopic Parameter Wizard](#)

[Huygens Batch Processor](#)

[Huygens PSF Distiller](#)

[Huygens Colocalization Analyzer](#)

[Huygens Interactive Object Analyzer](#)

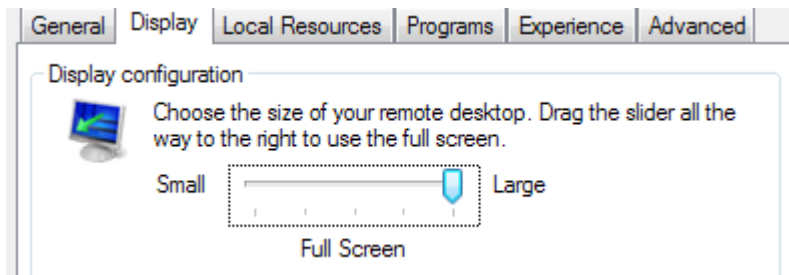
[Huygens Deconvolution Express](#)

[True Deconvolution Webinar](#)

[Huygens Object Analyzer Webinar](#)

Remote Desktop settings

Various options are available which may improve the usability of the connection under the 'Options' menu. You can adjust the size of the remote desktop here by selecting the 'Display' tab.



The connection can also be optimised to your connection speed. If you are on an Imperial campus, select the 'LAN' option. Remote connections via VPN connections will produce better results using either the 'High Speed Broadband' or 'Low Speed Broadband' options, depending upon the quality of your connection.

