

Coronavirus antibody test for research purposes only



Start here

This antibody test kit is part of a research study with Imperial College London. Please be aware that the antibody test is not 100% accurate. This means that although the test is not accurate enough to confirm whether or not an individual has had COVID-19, this research will allow us to estimate how many people in England have already been infected with the virus which causes COVID-19. This information will help the Government to plan its response.

Result of this test

We do not yet know if having antibodies against coronavirus stops people from getting COVID-19 again. Whatever your result, you must continue to follow current Government advice.

Here is what you will be asked to do as you go ahead with taking this test.

- Read all of the information in the pack.
- Organise the testing kit in a clean, safe space.
- Follow the nine steps in this booklet.
- Record your result and dispose of the kit.



The instructions in this booklet will guide you on how to take the test yourself. Although the test can be done alone, we advise you get someone from your household to assist you if you need.

If you have internet access you can watch a video explaining the steps at www.reactstudy.org/antibodytest

Please follow the instructions carefully.

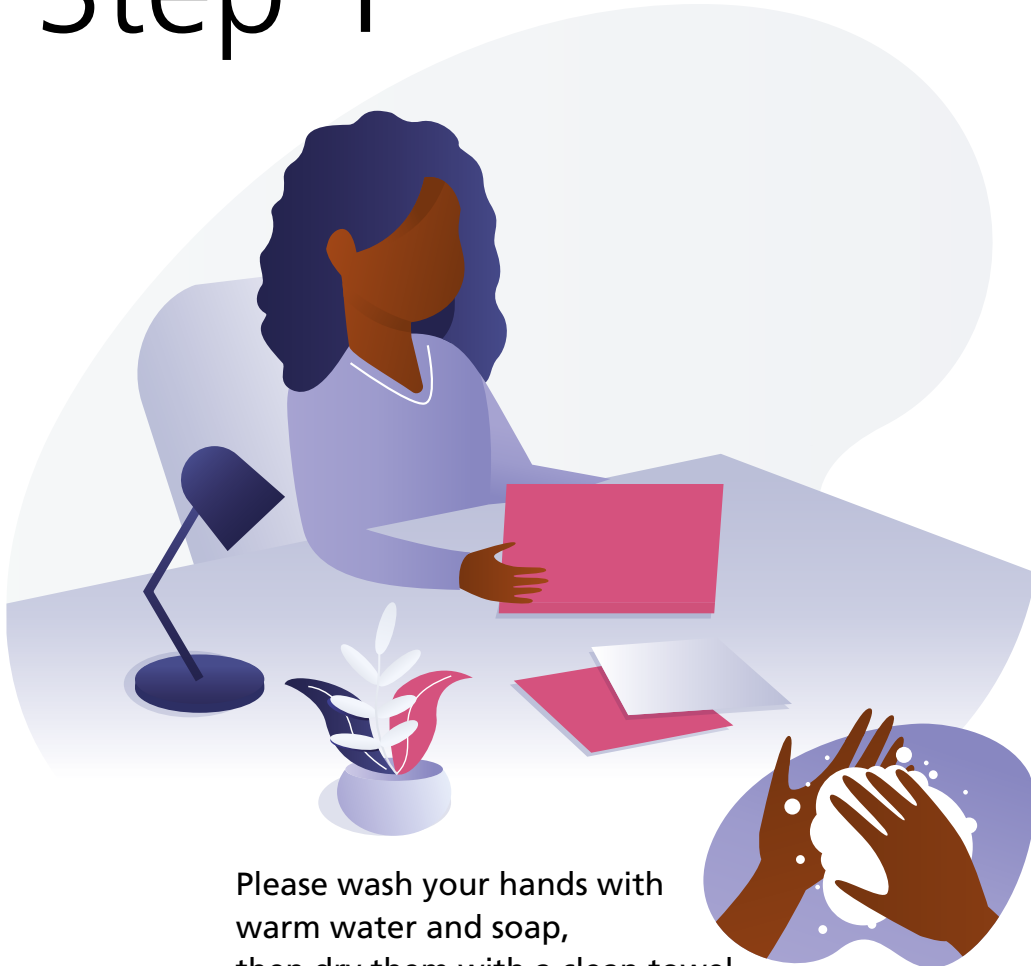
Do

- ✓ Read through this full instruction booklet before starting.
- ✓ Find a clean space on a table well away from children and pets to take the test.
- ✓ Give yourself about 30 minutes from start to finish to complete the test.
- ✓ Wash your hands thoroughly with soap and water before and after using the test kit.
- ✓ Straight after completing the test, follow Steps 6 & 7, do the questionnaire and upload a photo of the result.
- ✓ Safely dispose of the kit as outlined in this booklet.

Don't

- ✗ Do not allow children or pets to touch or access the test kit.
- ✗ Do not eat or swallow any part of the kit.
- ✗ Do not take any action as a result of the test. This is for research purposes only.
- ✗ Do not give the test to anyone else. This test is only to be done by the person it was sent to.

Step 1



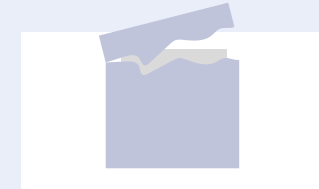
Please wash your hands with warm water and soap, then dry them with a clean towel.

Now make plenty of space on a clean table, then lay out the pieces of the test kit in front of you.

Take the testing stick out of its foil wrapper and arrange the pieces of the test kit on your table.

■ You may notice the testing stick has a blue line next to 'C' – this is normal.

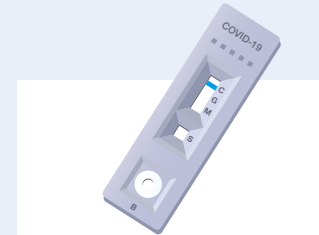
Arrange the various pieces of the test kit on a clean area of a table:



Alcohol wipe



Two lancets, each with a protective cap over the needle



Testing stick, taken out of foil wrapper



Buffer liquid



Timer or clock (not included)

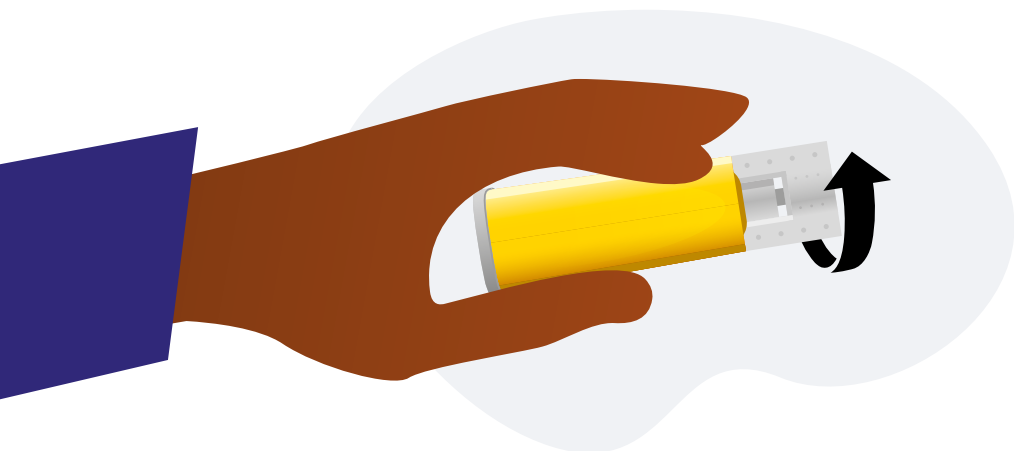


The included pipette may be used if you choose

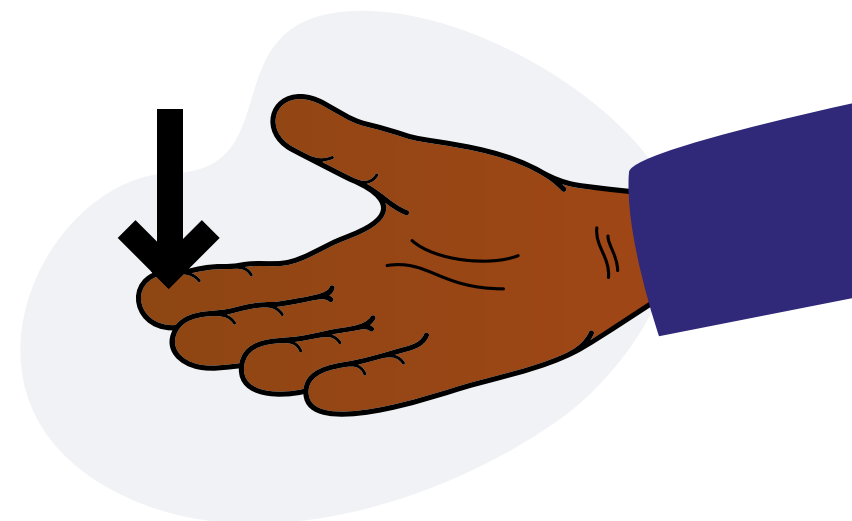
Step 2

Hold the yellow lancet and twist the cap one full turn to unlock, then pull the cap until you feel it separate from the device. Remove the cap completely.

You can dispose of the cap.



Lancet



Next, choose a spot on the fleshy bit or side of one finger as pictured here.

Wipe the area on your finger with the alcohol wipe.

If you are right handed it may be easiest to choose a spot on your left hand and vice versa.



Alcohol wipe

Step 3

To draw blood, press the uncapped end of the lancet firmly against your wiped finger until you hear a click.

This will feel like a little pinch and will create a droplet of blood.



Uncapped lancet

Important: please read

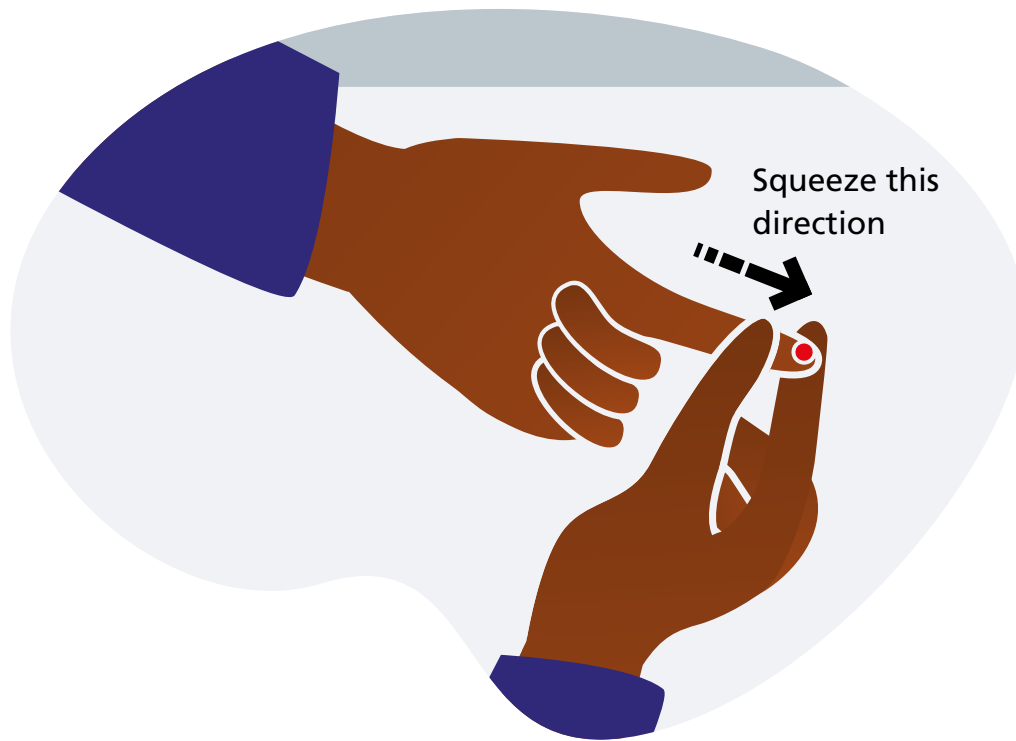
Do not tamper with the lancet. If the lancet malfunctions, use the spare lancet.

The lancets are sterile and designed for this purpose. If you fail to get a drop of blood using the lancets provided, do not attempt to draw blood with any other device.



Step 4

Squeeze your finger from the base of your finger towards the fingertip. This will move the blood towards where you pricked your finger. Do this until you form a large droplet of blood.

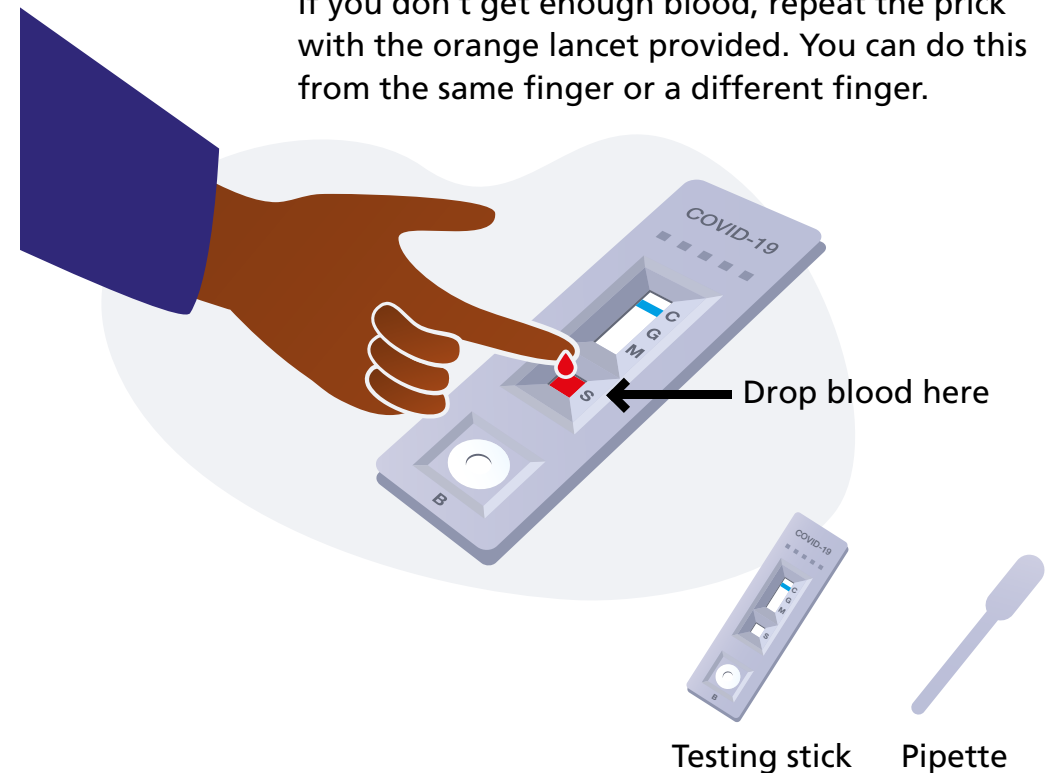


Step 5

With the testing stick lying flat on the table in front of you, allow a large drop of blood to fall into the square shaped well marked 'S' as shown in the picture below. If you prefer, you can use the pipette to collect the blood droplet.

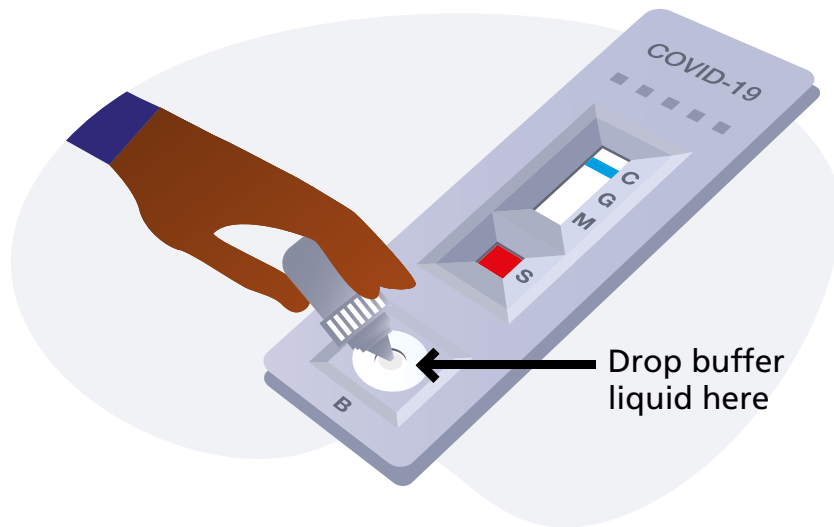
Be sure the blood covers the bottom of the well. The test will not work properly if not enough blood is dropped in.

If you don't get enough blood, repeat the prick with the orange lancet provided. You can do this from the same finger or a different finger.



Step 6

Remove the cap from the buffer liquid container and add two drops to the circular well at the bottom (marked 'B') as shown in the picture below.



Testing stick



Buffer liquid

Step 7

Once the buffer liquid has been added, **wait for 10 minutes but no longer than 15 minutes.**

If after two minutes the blue line has not turned red, add one additional drop of buffer liquid to the buffer well (marked 'B').



Timer or clock (not included)

Step 8

We need you to share your test result with us as part of this research study.

After waiting **10 minutes but no longer than 15 minutes**, take a photo of your testing stick (optional) using the **template provided** on the next page.

If you choose to take the photo, you will need to share this with us when you complete the online questionnaire in Step 8.

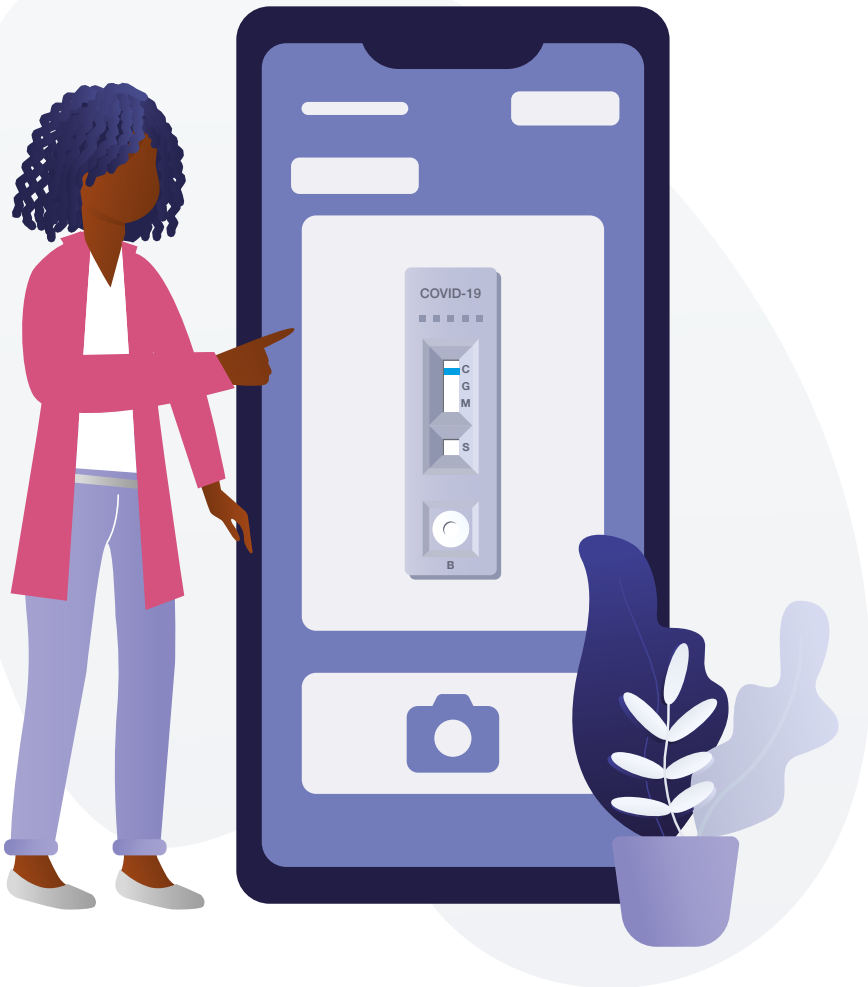
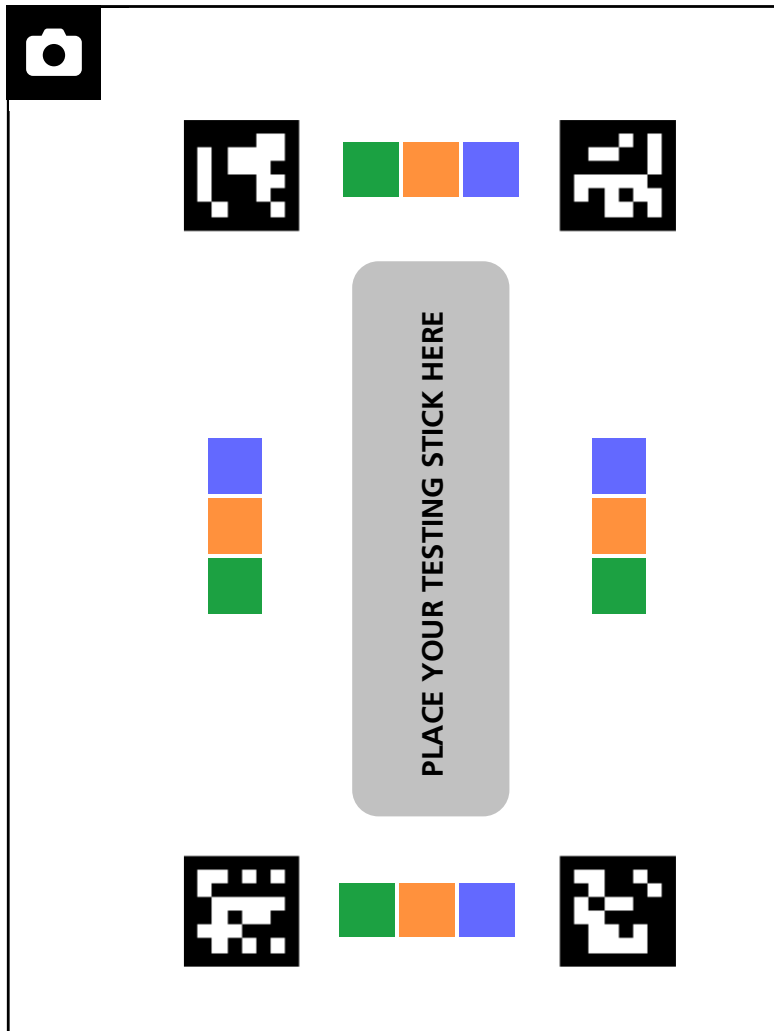


Photo template

Place your testing stick on the shaded space and take a photo from directly above in a well lit area. Avoid any shadows in the photo and do not use a flash.

Use the black line as a guide for the edges of your photo to keep the testing stick in the centre of the photo.



This colour reference is for computer vision purposes

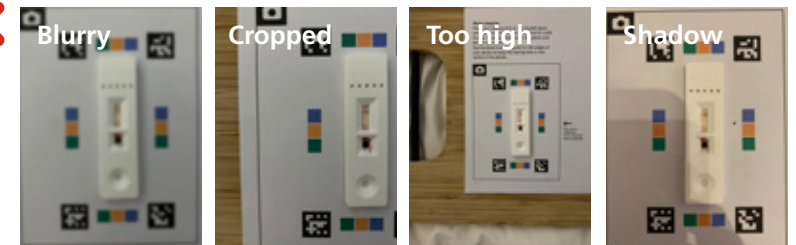
Good testing stick photos

This is an example of a sharp photo from directly above with good lighting, using the template provided.



Bad testing stick photos

These are bad examples of blurry and cropped photos that do not use the template provided.



Step 9

Please visit www.reactstudy.org/antibodytest

Enter the access code found on the letter in the test pack. Complete the questionnaire and upload the photo of your testing stick when prompted.

The results may fall into three categories, Invalid, Negative or Positive. Please review the images on the facing page to find the one that matches the pattern that has appeared on your testing stick.

This test is only for research purposes

Please be aware that the antibody test is not reliable at an individual level. Therefore, whatever your test result, you must continue to follow current Government advice.

What do the results mean?

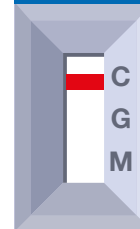
Antibodies are made by the immune system to fight infection. This test looks for two types of antibodies, IgM ('M' line), which don't stay in the body very long, and IgG ('G' line), which are usually longer lasting. By looking for antibodies in your blood, we can understand whether someone has previously been infected with the virus that causes COVID-19.

Invalid test result



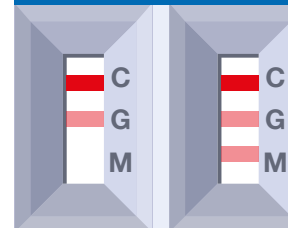
Your test result is invalid if the line next to 'C' is still completely or partially blue, whether or not there are other visible lines next to 'G' or 'M'. This means the test has not worked and no result can be given.

Negative test result



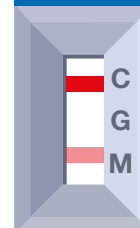
Your test result is negative if the line next to 'C' is completely red and there are no lines next to 'G' or 'M'.

IgG positive test results



Your test result is positive if the line next to 'C' is completely red and there is a line (no matter how light or dark) next to 'G' or 'G' and 'M'.

IgM positive test result



Your test result is positive if the line next to 'C' is completely red and there is a line (no matter how light or dark) next to 'M'.

Step 10

This test is only for research purposes

This test is not reliable at the individual level so please do not change your behaviour whatever the result. We do not yet know if having antibodies against coronavirus protects people from getting COVID-19 again.

You have now completed the test and can safely dispose of the test kit. Please do the following:

Disposal of the test kit

- Place the testing stick back into its foil wrapper.
- Place all of the test kit items into the plastic case they came in.
- Dispose of the kit with your regular household waste.
- Keep out of reach of children and pets.

If you choose not to complete the test, you should dispose of the kit following the instructions above.

Safety precautions:

- In case of accidental skin exposure to the buffer liquid, wash the exposed area with soap and water.
- In case of accidental eye exposure to the buffer liquid, rinse the eyes thoroughly with cool water.
- If irritation or any other symptoms develop after accidental ingestion or exposure to the buffer liquid, call NHS 111 to seek medical advice.

**Imperial College
London**

Ipsos MORI



Freephone help desk: 0800 819 9150

Manufacturer: Fortress Diagnostics Ltd, 9A The
Technology Park, Belfast Road, Antrim, BT41 1QS.