

Engagement Day 2022

Envisioning the future through collaboration

27 April | #EngageDay22



10:00-10:10

Welcome

Professor Maggie Dallman, Associate Provost (Academic Partnerships) and Vice-President (International), Professor of Immunology

10:10-11:00

Keynote

Emily Morrison, Institute for Community Studies, powered by the Young Foundation
People powered research for a thriving society

11:00-11:20

Break

11:20-12:30

In conversation with... the Co-Production Collective

The role of power in participatory research

- Lizzie Cain, Co-Production Collective
- Vita Moltedo, Maternity Voices Matter
- Emily Morrison, Institute for Community Studies

12:30-13:30

Lunch

Enjoy sandwiches, cakes, tea and coffee, and chat to colleagues from across the College

13:30-14:30

Deep-dive discussions

A choice of three followed by a Q&A

- Breathing together: a collaborative journey in engaging with children under five - Ellen Dowell and Dr Vicky Cave
- Exploring the depths of peer research: building relationships, challenging power dynamics and the role of effective training - Vas Papageorgiou, Jane Bruton, Wezi Thamm and Halle Johnson
- Co-designing new brain scanning technology with young people with epilepsy - Joanne Thomas and Steph Mellor

14:30-14:50

Break

14:50-15:45

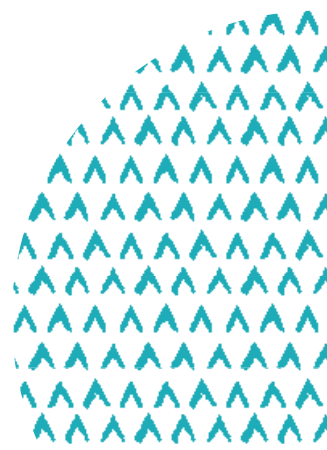
Lightning talks

Four short presentations followed by a Q&A

- Well home study - Diana Varaden
- Synch.Live - Madalina-Ioana Sas
- Relationship + Engagement = Impact - Shaaron Leverment
- SustainAbleYou - Dr Poppy Lakeman Fraser

15:45-16:00

Closing remarks



WELCOME

Welcome to Imperial's Engagement Day 2022; we are delighted that you are joining us. Today we will be focusing on the theme Engagement Forward, exploring how to build on current practices to enable a more diverse range of people to get involved with us through participatory methods. The day will demonstrate how participatory research can make a positive impact on our

futures, discussing the role of power when collaborating with others, how to approach a range of participatory methods and techniques, and how we value the contribution of participants. We hope that you leave today with ideas for how you can incorporate these themes – creating more equitable, accessible and inclusive research to find effective solutions to real world challenges.

Professor Maggie Dallman, Associate Provost (Academic Partnerships), Vice President (International), Professor of Immunology



Emily Morrison, Head of the Institute for Community Studies, powered by the Young Foundation

Emily is the Head of the Institute of Community Studies, powered by The Young Foundation. Emily joined the Institute from the British Council where she developed the global research portfolio, spanning internationally comparative research into youth voice and policy, education, civil society, and culture. Emily has previously held professional and academic positions at University College London and King's College London. She began working in research as a creative practitioner researcher with NGOs in the UK and overseas.

Dr Vicky Cave, Early Years Play Consultant

Vicky is an Early Years Play Consultant. She is passionate about creating spaces for children and their families to play and learn together, where they can find out new things about the world around them and about each other. She works to create different ways for more people to become involved in creative experiences, developing ways in which people can help to create new spaces and experience creative activities.

Lizzie Cain, Co-production and Learning Manager, Co-Production Collective

Lizzie is part of the team behind Co-Production Collective, a co-production community based at UCL which has been co-created from scratch since 2017. The Collective exists to bring people with all kinds of lived, living and learnt experience together to learn, connect and champion co-production. Lizzie's background is in social policy and the charity sector, and her work with Co-Production Collective involves a bit of everything, with a particular focus on supporting co-production projects across research, policy, services and communities.

Vita Moltedo, Maternity Voices Matter

Vita is part of Maternity Voices Matter (funded by Co-Production Collective in 2019/20) and active in ARC South London. Vita is passionate about involving members of the public in research, people with lived experiences, people of all backgrounds, and people who are the protagonists of healthcare and healthcare research but who are so often kept mute by the systems that are in place and our society.

Stephanie Mellor, Research Assistant, UCL

Stephanie is a researcher studying for a PhD at UCL, using a novel brain imaging technique called OP-MEG to record epileptiform activity. She has a background in physics, for which she received an MSci degree from Imperial College in 2017. During her PhD, she's worked on public engagement projects to better inform the clinical translation of OP-MEG.

Vicky Brightman, Head of Public Engagement, Public Engagement

Vicky's team works to embed a culture of public engagement at Imperial. This includes developing ways to enable public engagement to enrich academic thinking and research, implementing institutional structures for support, training and recognition and leading on public programmes such as the Great Exhibition Road Festival and Imperial Lates.



**Vas Papageorgiou, Research Postgraduate,
Department of Infectious Disease Epidemiology,
School of Public Health**

Vas is a PhD student who has utilised participatory approaches by involving people living with HIV as co-researchers in a qualitative project exploring experiences during COVID-19. Vas is passionate about involving people with lived experience in all areas of the research cycle and designing training for co-researchers that is both informative and engaging.

**Jane Bruton, Clinical Research Manager, Patient
Experience Research Centre**

Jane is one of the qualitative researchers in the Patient Experience Research Centre (PERC) team. She is a nurse by background with extensive clinical experience in HIV and sexual health. She has experience in developing partnership-working with people living with HIV in the development of treatments and services and has used that experience to inform the development of participatory methods of research.

Wezi Thamm, Co-researcher, Newcastle University

Wezi has a background in teaching and psychology. She has been an HIV activist in community work, prevention, treatment, care, advocacy, and training for many years. Wezi is a trustee on the boards of the Sofia Forum, Hillingdon AIDS Response Trust (HART), the Strategic Advisory Board of the INTUIT project (intuitproject.org), and a founding member and Chair of the network of Women in Europe and Central Asia Regions plus (WECARE+).

**Halle Johnson, Public Involvement Practitioner,
Patient Experience Research Centre**

Halle is a Public Involvement Officer at the PERC and provides public involvement advice and support to the NIHR Imperial Biomedical Research Centre. Halle has previously worked in public involvement within both the charity and research sectors. She has experience in engaging and involving members of the public in health research, particularly individuals affected by advanced illness.

**Joanne Thomas, Public Engagement Coordinator,
Wellcome Centre for Human Neuroimaging, UCL**

Joanne is the Public Engagement Coordinator at the Wellcome Centre for Human Neuroimaging, UCL. Supporting over 120 researchers and clinicians, Joanne's focus is to develop and deliver meaningful engagement practice. With a strong background in communicating science in accessible ways, she specialises in providing support and building agency within the researchers and patients groups that she works with.

**Ellen Dowell, Public Engagement Officer, National
Heart & Lung Institute, Faculty of Medicine**

Ellen is a creative producer of science engagement, curator and interdisciplinary facilitator. She works part-time for Imperial College London developing creative science engagement projects for the National Heart & Lung Institute (NHLI). She facilitates the Breathing Together engagement programme in collaboration with OKIDO.

Dan Simpson, Spoken Word Poet

Dan Simpson is a writer, performer, producer, and educator. He makes highly engaging and contemporary work that is entertaining, intelligent, and thought-provoking. Amongst other places, Dan was previously Poet-in-Residence at Imperial College London.

**Shaaron Leverment, Chief Executive, Association for
Science and Discovery Centres (ASDC)**

Shaaron is the CEO of the Association for Science and Discovery Centres (ASDC) and has over 20 years' experience working in science engagement and education. She stands for the value of science centres and museums for social good, as community assets that are accessible and relevant for a more diverse public to the achievements of other minority leaders in these fields.

**Dr Poppy Lakeman Fraser, Centre for Environmen-
tal Policy, Imperial College London**

Poppy is a Global Change Ecologist, Citizen Science Manager and National Geographic Explorer based in the Centre for Environmental Policy, Imperial College London. She is a creative, science professional with a passion for the natural world and a drive to support young people to access it, record it and act for their local environment.

**Madalina-Ioana Sas, Research Postgraduate, Depart-
ment of Computing, Faculty of Engineering**

Madalina is a PhD student in the Complexity & Network centre, with a background as a computer engineer. Her research interests revolve around emergent phenomena with collective and self-organised behaviour, and use methods as varied as information theory, network science, signal processing, simulation, and modelling.

**Dr Diana Varaden, Research Associate, Faculty of
Medicine, School of Public Health**

Diana is a Postdoctoral Research Fellow in the Environmental Research Group with multidisciplinary skills in the fields of air pollution and social science. She is interested in interdisciplinary work bridging natural science, social and health disciplines and in identifying the benefits of involving lay individuals in the research process.

**Professor Maggie Dallman, Vice President (Interna-
tional), Associate Provost (Academic Partnerships),
Professor of Immunology**

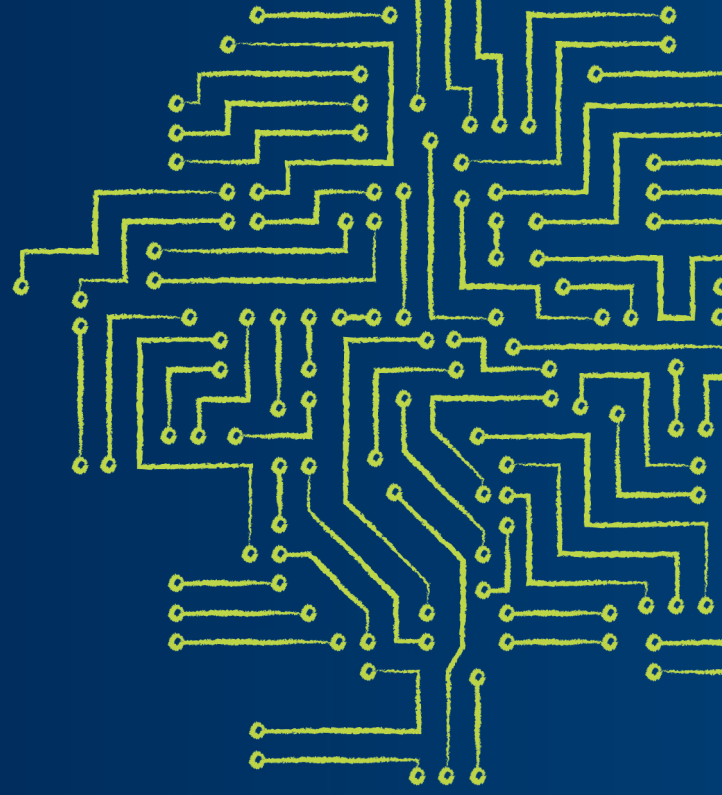
Having joined Imperial in 1994 as a lecturer in the Department of Biology, Maggie is now the academic lead on the College's International Relations and Societal Engagement Strategies. She leads Imperial's outreach strategy, helping extend opportunities in STEM education and research, and heads Imperial's work with the community in White City.



Engagement Day was brought to you by the Societal Engagement Team. Please continue to work with us – we offer advice, training and funding and run events such as the Great Exhibition Road Festival. Sign up to our newsletter to be the first to know about these opportunities and more at: imperial.ac.uk/be-inspired/societal-engagement.

We would like to thank everyone that has contributed to Engagement Day - without their valuable feedback, experience and guidance today's programme would not have been possible.

Let us know what you thought! Share your comments through our evaluation forms, email us or tweet with #EngageDay22



societal_engagement@imperial.ac.uk



www.imperial.ac.uk/be-inspired/societal-engagement