

The purpose of a Generic Emergency Evacuation Plan (GEEP) is to enable visitors to the building with restricted mobility or those who may not be able to evacuate unaided to become familiar with the layout, evacuation procedures, available equipment and communication devices. If you feel that this document does not provide you with sufficient information or that you require further assistance, please contact the Imperial College London, Security Team on 020 7594 8910.

The building:

The Sir Ernst Chain building is comprised of 8 floors. All floors are accessible by using the lifts. Emergency evacuation using these lifts is possible during an evacuation. Safe refuge areas are available in the West stair core on all floors. There are two Fire Exits available from the building on the basement level and one from the Ground Floor, this is the main entrance (See attached floor plan). The Main Entrance is equipped with a Disabled Lift to assist egress. Horizontal evacuation is possible into the Chemistry Building on all floors except Level 6 but some levels require the use of stairs and building users are advised to familiarise themselves with the most appropriate evacuation route.

Action required on hearing the Fire Alarm:

If able, you should leave the building immediately by the nearest fire exit (see attached floorplan) and report to the assigned assembly point for the building.

If you are unable to evacuate the building unaided, please proceed to one of the safe refuges located in each stair core (see attached floor plan).

An EVC System (Emergency Voice Communication System) is available in each safe refuge. Use this to contact the security team and notify them of your location, details of which are printed on the front of the panel. Full details on how to use the emergency call point are also provided in the safe refuge. If the EVC System is not working call Security on 020 7589 1000.

Other recommendations:

It is recommended that all visitors to Imperial College London, should familiarise themselves with the fire alarm signals and floor layout of the building they are in. Floor plans and evacuation equipment locations have been provided with this document.

Equipment provided:

There is one Disabled Accessible fire exit available on the ground floor of the building, this is the main entrance and is via a disabled lift (See attached floor plan).

A vibrating alert system is installed in this building. If you would like access to a pager, please contact Imperial College London, Security Team on 020 7594 8910.

Fire Safety

General Emergency Evacuation Plan

Fire Safety Information

Fire action

IF YOU DISCOVER A FIRE:-

- Immediately operate the nearest fire alarm call point
- Attack the fire if possible with the appliances provided but do not take personal risks.

IF YOU HEAR THE FIRE ALARM:-

- will call the fire brigade immediately by exchange telephone. (Always call the fire brigade immediately to every fire or suspicion of fire)

- Lift the receiver and dial '999'
- Give the operator your telephone number and ask for FIRE.
- When the fire brigade replies give the call distinctly:-
Fire at

DO NOT replace receiver until the address has been repeated by the FIRE BRIGADE.

- Leave the building and report to the person in charge of assembly point

USE THE NEAREST AVAILABLE EXIT

Do not stop to collect personal belongings
Do not use the lift
Never re-enter the building until authorised to do so.

Fire Action Notices can be found in any area within the College and stipulate action in the event of discovering a fire or in the event of the fire alarm sounding in the building.

Please familiarise yourself with the instructions stated in the notice and comply in the event of a fire or fire alarm.

In the event of fire. Do not call 999. Call Security on **0207 589 1000** and allow them to manage the incident.

Fire
door
keep shut

Fire Doors are designed to protect escape routes within buildings and limit the growth of a fire. Any door labelled with one of the above signs will resist a fire for a minimum of 30 minutes.

Please ensure that you do not prevent any door with this label from shutting and if you find a door that does not shut then please report it to a member of staff.



In case of
fire break glass

To maintain security and safety on site, many doors are secured with magnetic locks that only release when the correct key card is used or when the fire alarm activates.

Should you come to a fire escape route door that appears to be locked (or has not released correctly) there will be a green break glass unit nearby which will release the door.

Push the plastic window in to operate the lock override.



Fire alarm
call point

The fire alarm systems in all of our buildings rely on smoke and heat detectors in much the same way as any system that you might have at home.

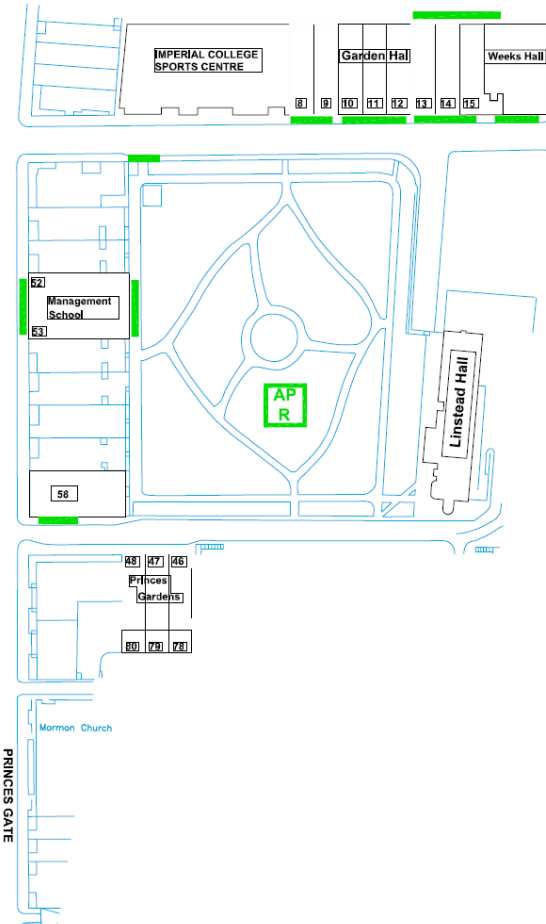
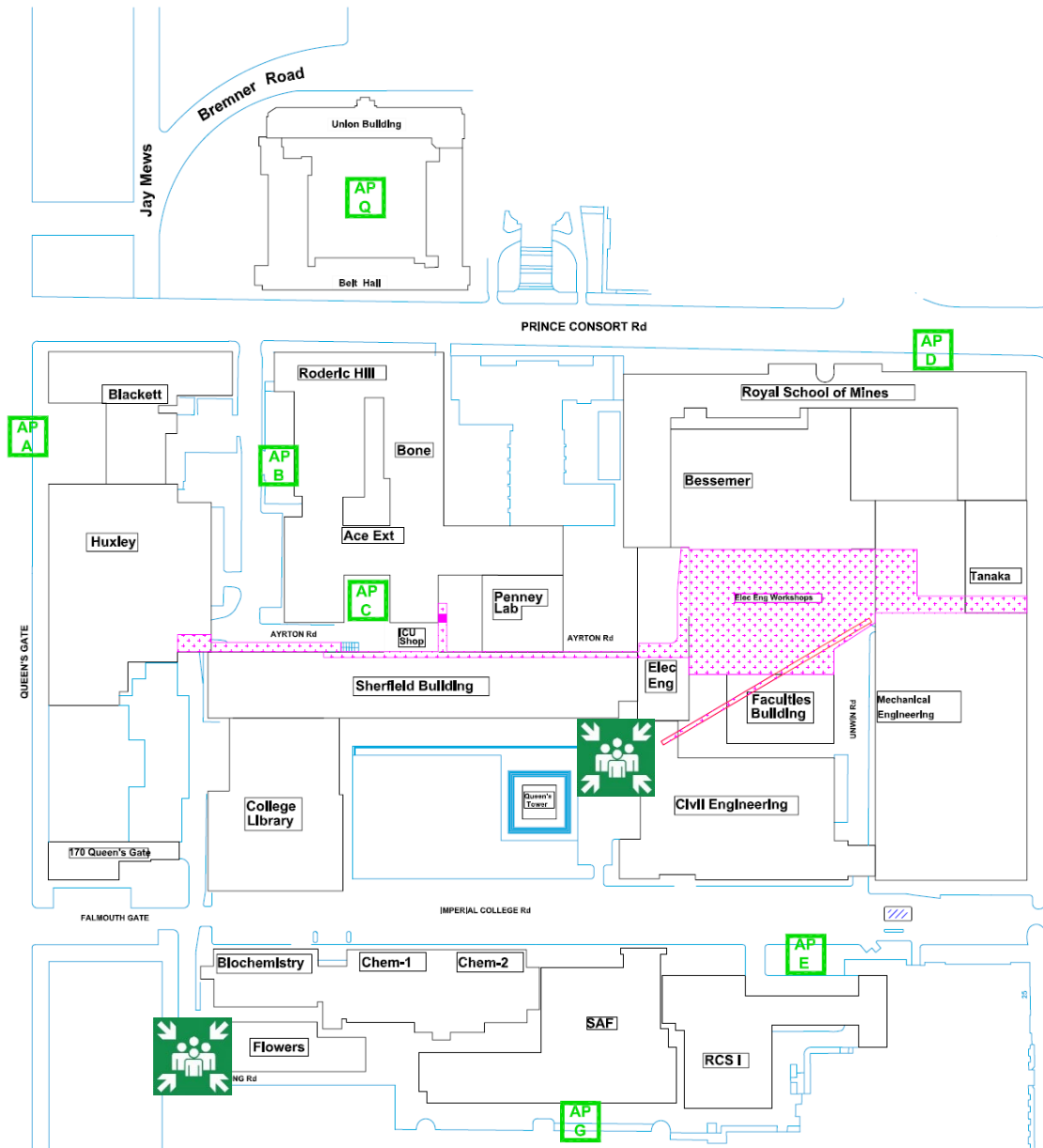
Our buildings are far more complex than domestic premises therefore we include the additional measure of Fire Alarm Call Points which will trigger the fire alarm system in a building.

If you see fire, ensure your own safety first and if possible activate a call point by pushing the plastic window

Fire Safety

General
Emergency
Evacuation
Plan

Assembly
Point



Fire Safety

General
Emergency
Evacuation
Plan

Sir Ernst Chain
Building

Level:
Basement



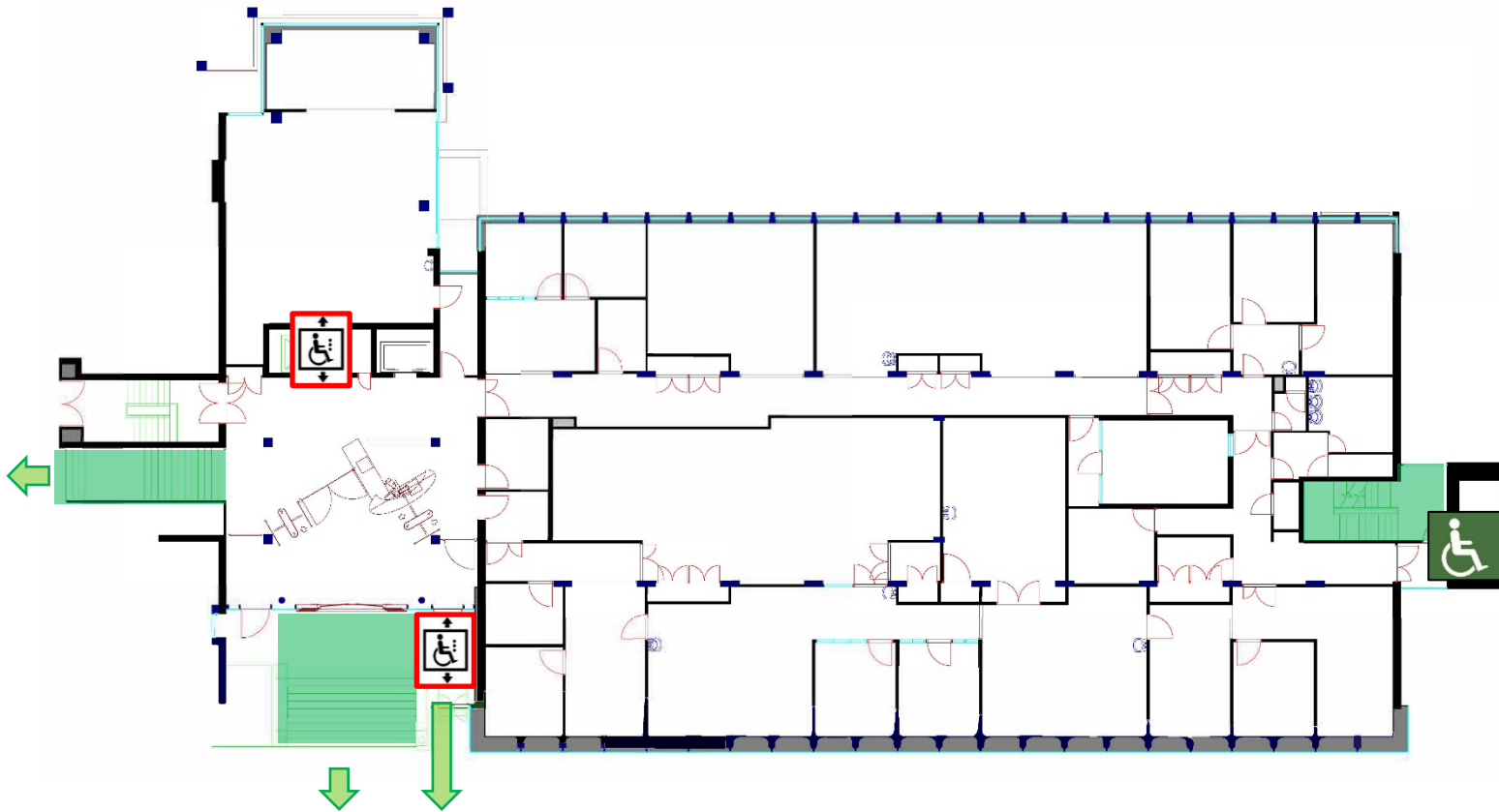
- KEY**
- ● Safe Route
 - (with wheelchair icon) Evac Lift
 - (with wheelchair icon) Refuge Point

Fire Safety

General
Emergency
Evacuation
Plan

Sir Ernst Chain
Building

Level:
1



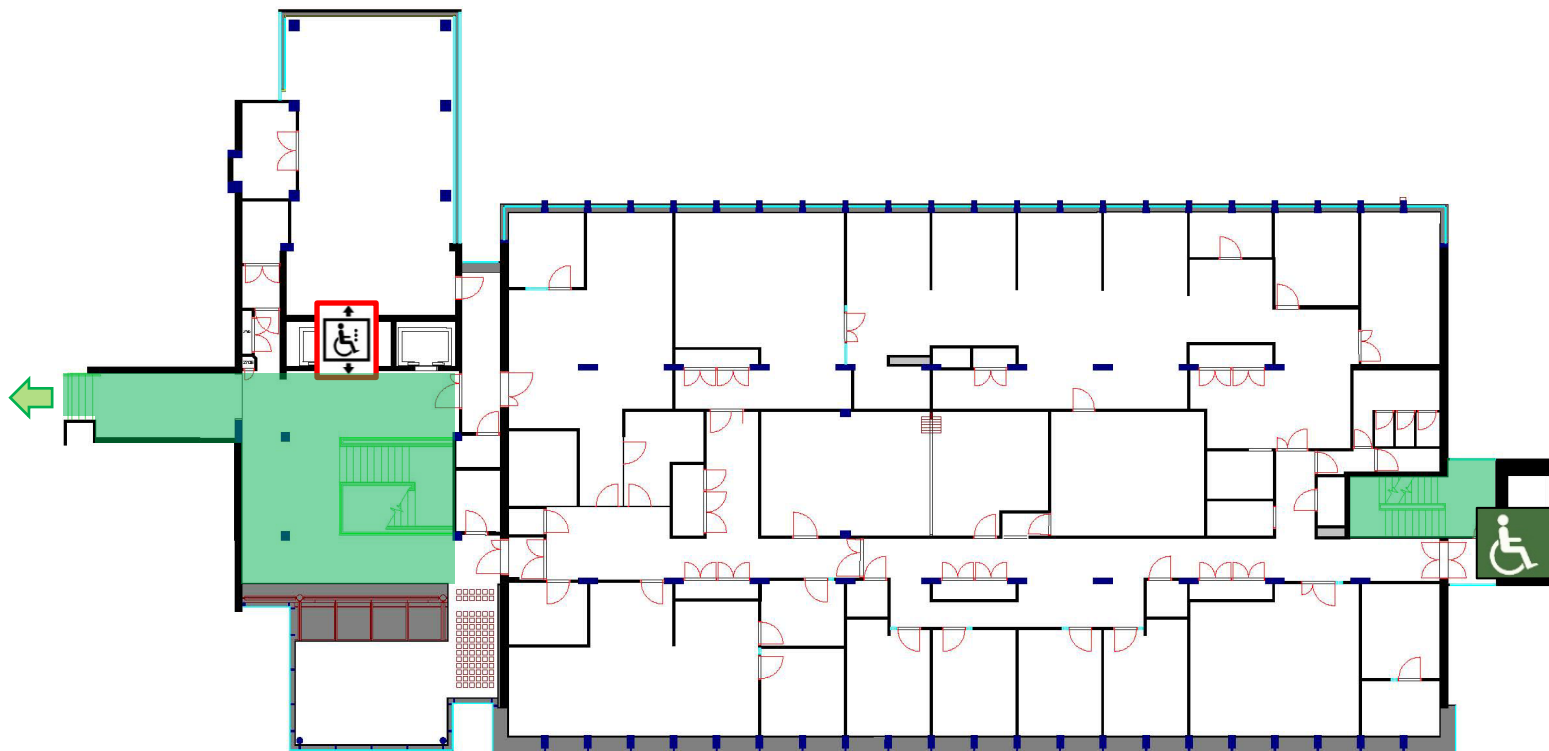
- KEY**
- ● Safe Route
 - (wheelchair icon with double arrow) Evac Lift
 - (wheelchair icon) Refuge Point

Fire Safety

General
Emergency
Evacuation
Plan

Sir Ernst Chain
Building

Level:
2



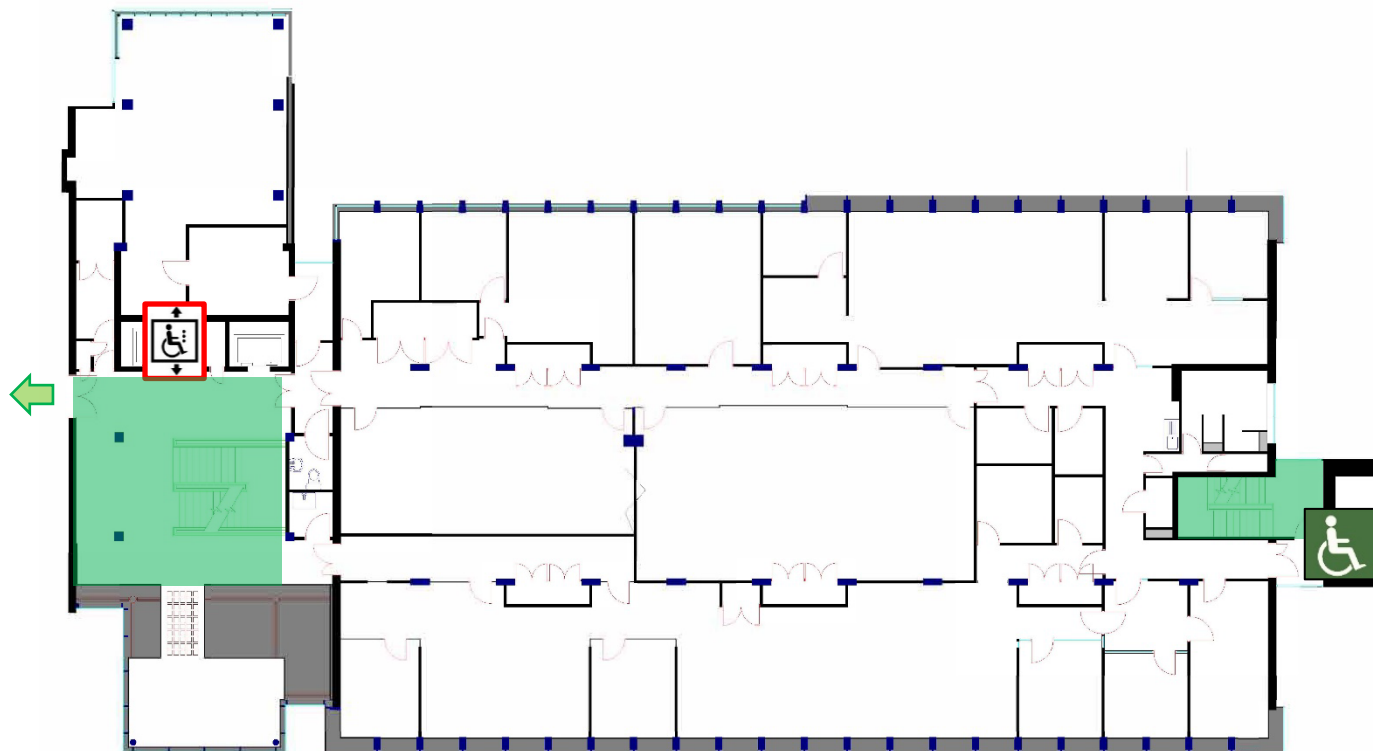
KEY ● ● Safe Route ● Evac Lift ● Refuge Point

Fire Safety

General
Emergency
Evacuation
Plan

Sir Ernst Chain
Building

Level:
3



KEY ● ● Safe Route

Evac Lift

Refuge Point

Fire Safety

General
Emergency
Evacuation
Plan

Sir Ernst Chain
Building

Level:
4



KEY ● ● Safe Route

● Evac Lift

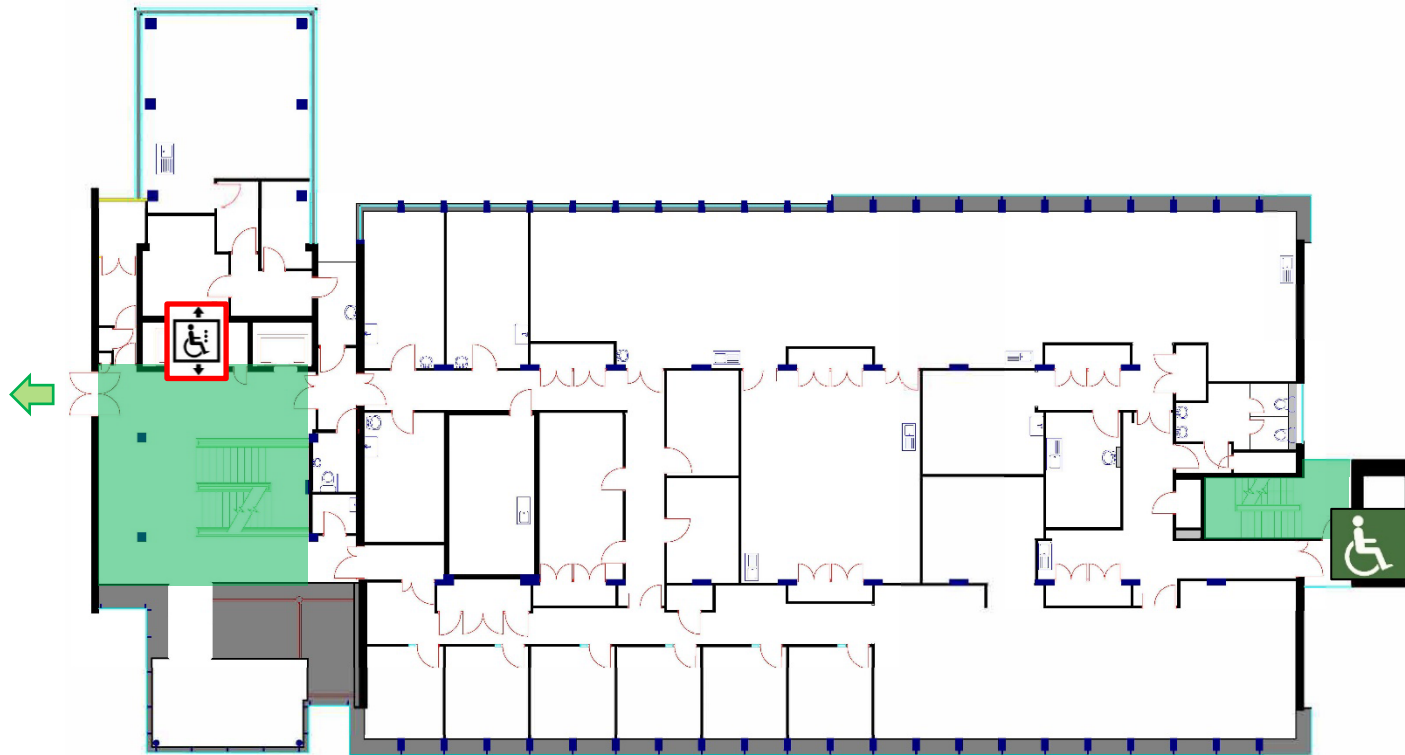
● Refuge Point

Fire Safety

General
Emergency
Evacuation
Plan

Sir Ernst Chain
Building

Level:
5



KEY ● ● Safe Route

 Evac Lift

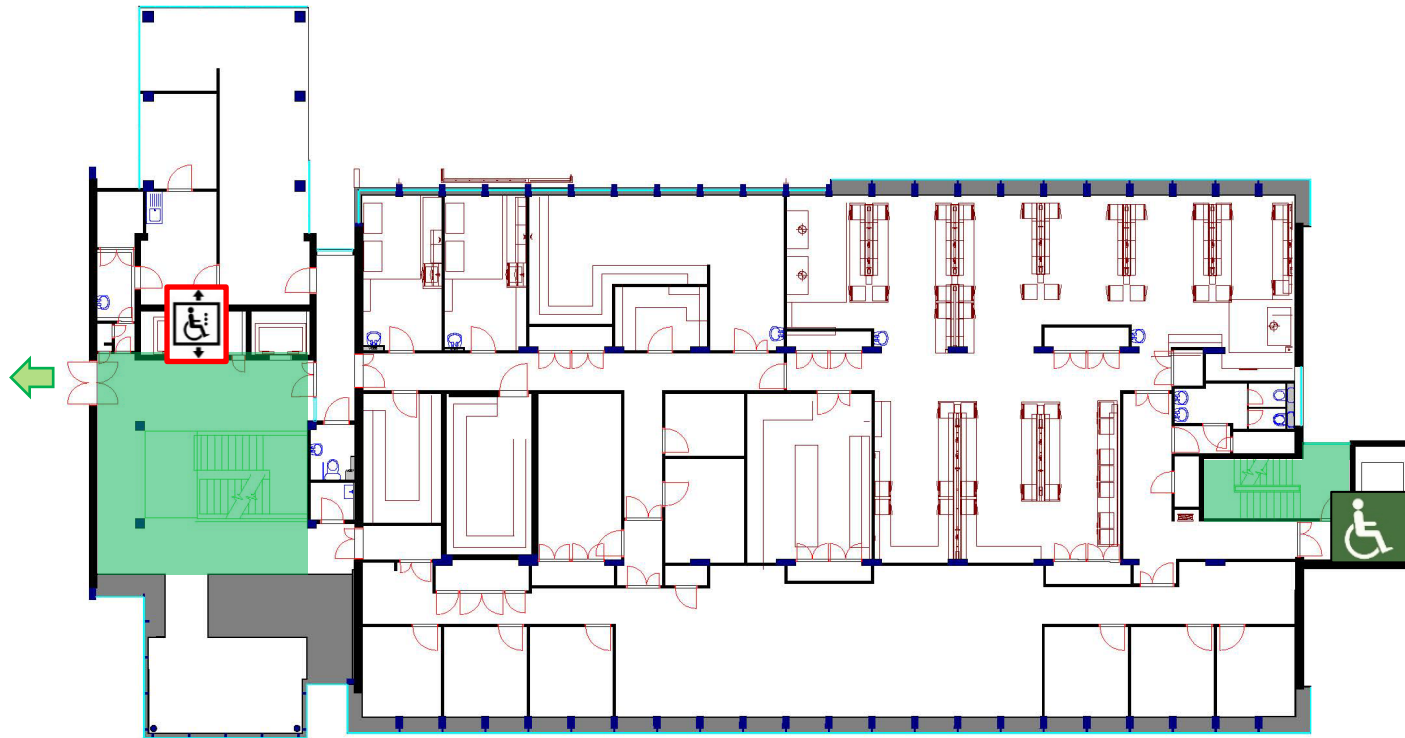
 Refuge Point

Fire Safety

General
Emergency
Evacuation
Plan

Sir Ernst Chain
Building

Level:
6



KEY ● ● Safe Route

● Evac Lift

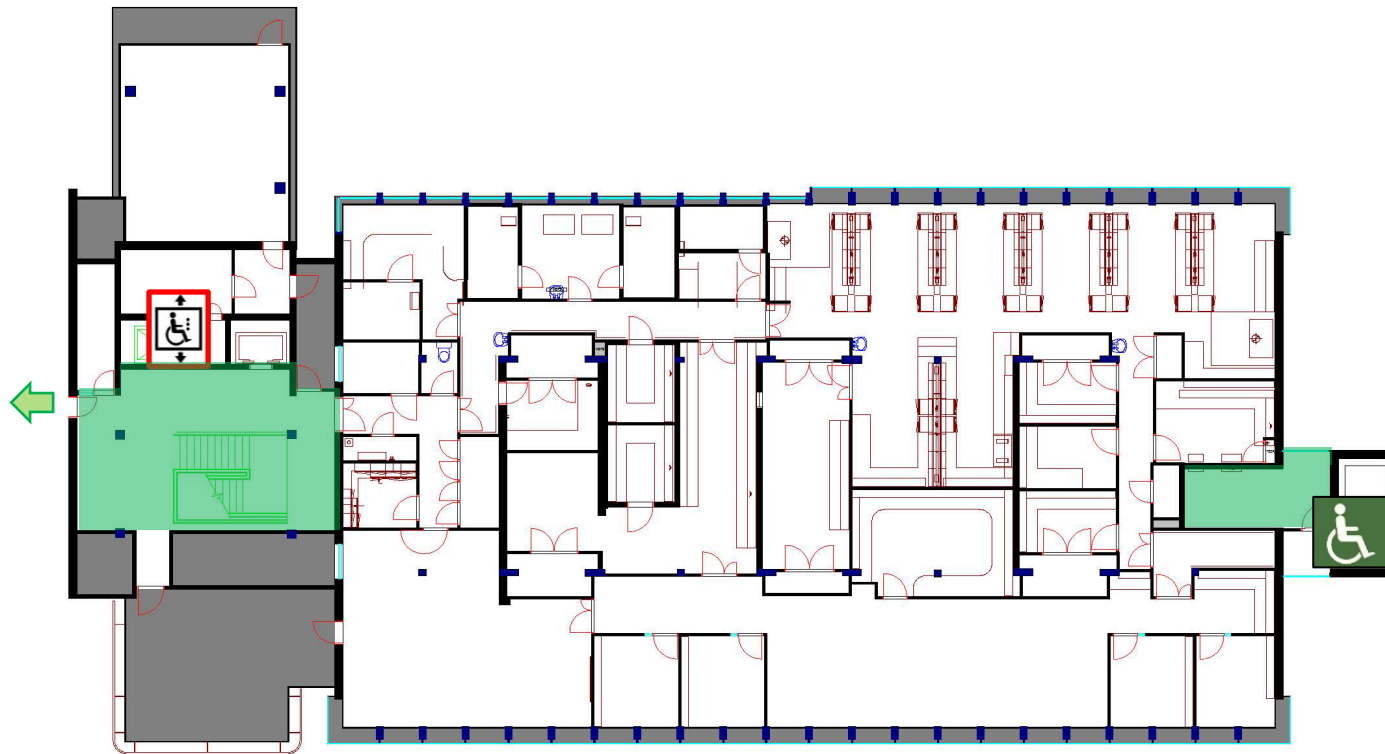
● Refuge Point

Fire Safety

General
Emergency
Evacuation
Plan

Sir Ernst Chain
Building

Level:
7



KEY ● ● Safe Route

Evac Lift

Refuge Point