

The purpose of a Generic Emergency Evacuation Plan (GEEP) is to enable visitors to the building with restricted mobility or those who may not be able to evacuate unaided to become familiar with the layout, evacuation procedures, available equipment and communication devices. If you feel that this document does not provide you with sufficient information or that you require further assistance, please contact the Imperial College London, Security Team on 020 7594 8910.

**The building:**

The Sir Alexander Fleming Building is comprised of 10 floors. All floors are accessible by using the lifts. Emergency egress using these lifts is possible during an evacuation.

Safe refuge areas are available in all stair cores but do not include an emergency communication system. There are 10 Fire Exits available from the building on the lower ground floor, 7 of which are Disabled Accessible. (See attached floor plan).

There are 3 evac lift available on all upper floors, (See attached floor plan).

**Action required on hearing the Fire Alarm:**

If able, you should leave the building immediately by the nearest fire exit (see attached floor plan) and report to the assigned assembly point for the building.

If you are unable to evacuate the building unaided, please contact a member of staff.

**Other recommendations:**

It is recommended that all visitors to Imperial College London, should familiarise themselves with the fire alarm signals and floor layout of the building they are in. Floor plans and evacuation equipment locations have been provided with this document.

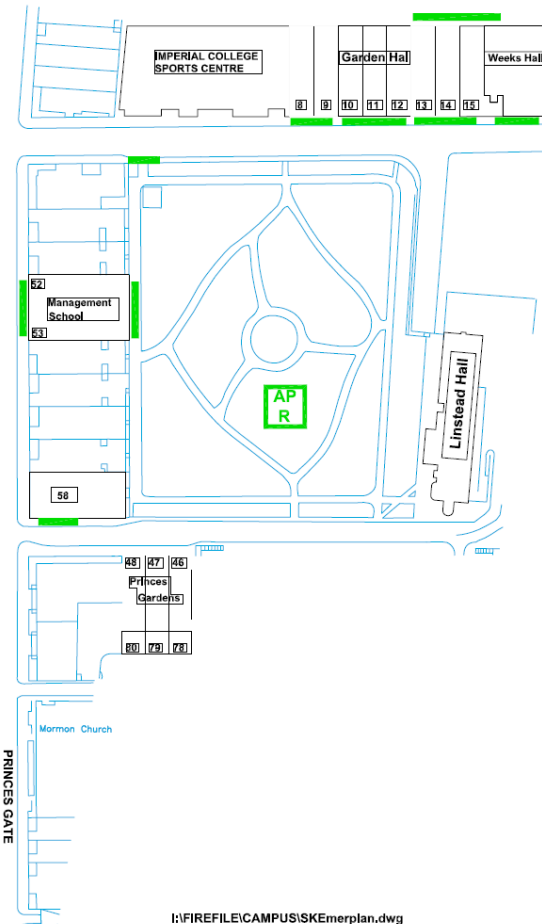
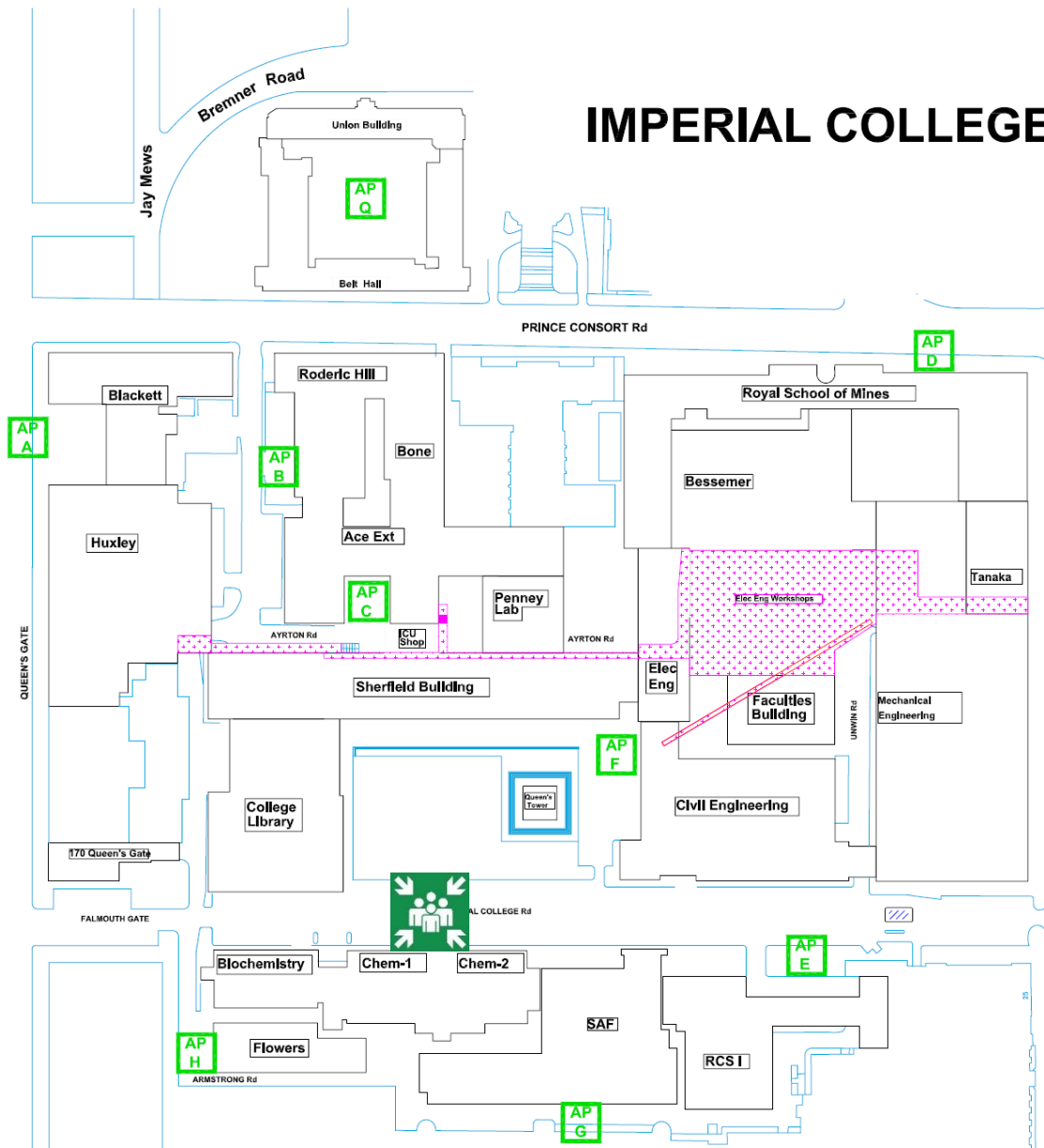
**Equipment provided:**

There are 7 Disabled Accessible fire exits available on the lower ground floor, (See attached floor plan).

There are 3 evac lift available on all upper floors, (See attached floor plan).

**A vibrating alert system is installed in this building. If you would like access to a pager, please contact Imperial College London, Security Team on 020 7594 8910.**

# IMPERIAL COLLEGE LONDON



H:\FIREFILE\CAMPUS\ISKEmerplan.dwg

**KEY**  
● **AP** Site Assembly Points  
● **F**

 Sir Alexander Fleming Building Assembly Point

**Fire Safety**

**General  
Emergency  
Evacuation  
Plan**

**Sir Alexander  
Fleming Building**

**Level:  
Lower Ground**



**KEY**

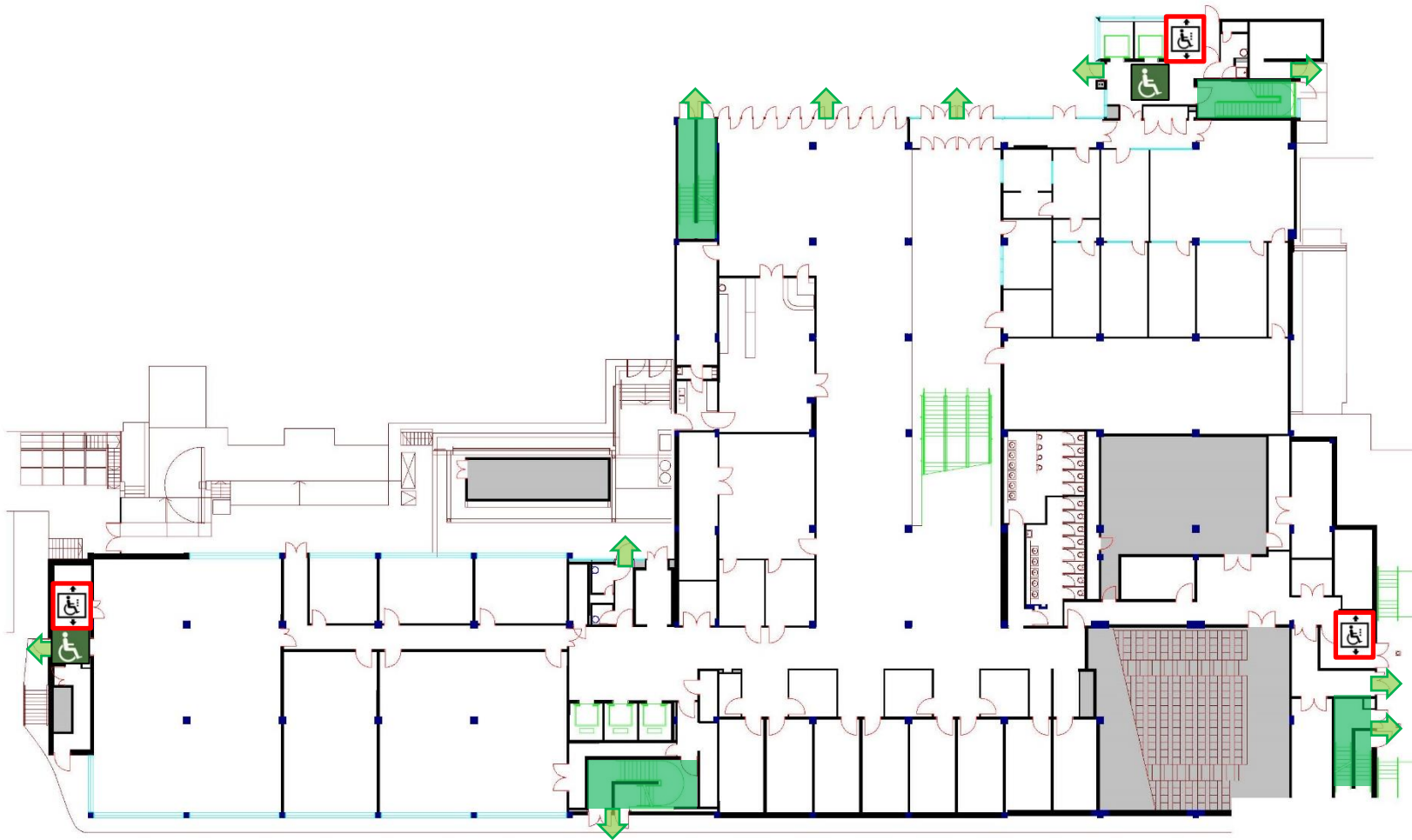
- ● Safe Route
- Evac Chair
- Refuge Point
- Evacuation Lift

**Fire Safety**

**General  
Emergency  
Evacuation  
Plan**

**Sir Alexander  
Fleming Building**

**Level: 0**



- KEY**
- ● Safe Route
  - 🚒 Evac Chair
  - ♿ Refuge Point
  - ♿ Evacuation Lift

**Fire Safety**

**General  
Emergency  
Evacuation  
Plan**

**Sir Alexander  
Fleming Building**

**Level: 1**



**KEY**



**Safe Route**



**Evac Chair**



**Refuge Point**



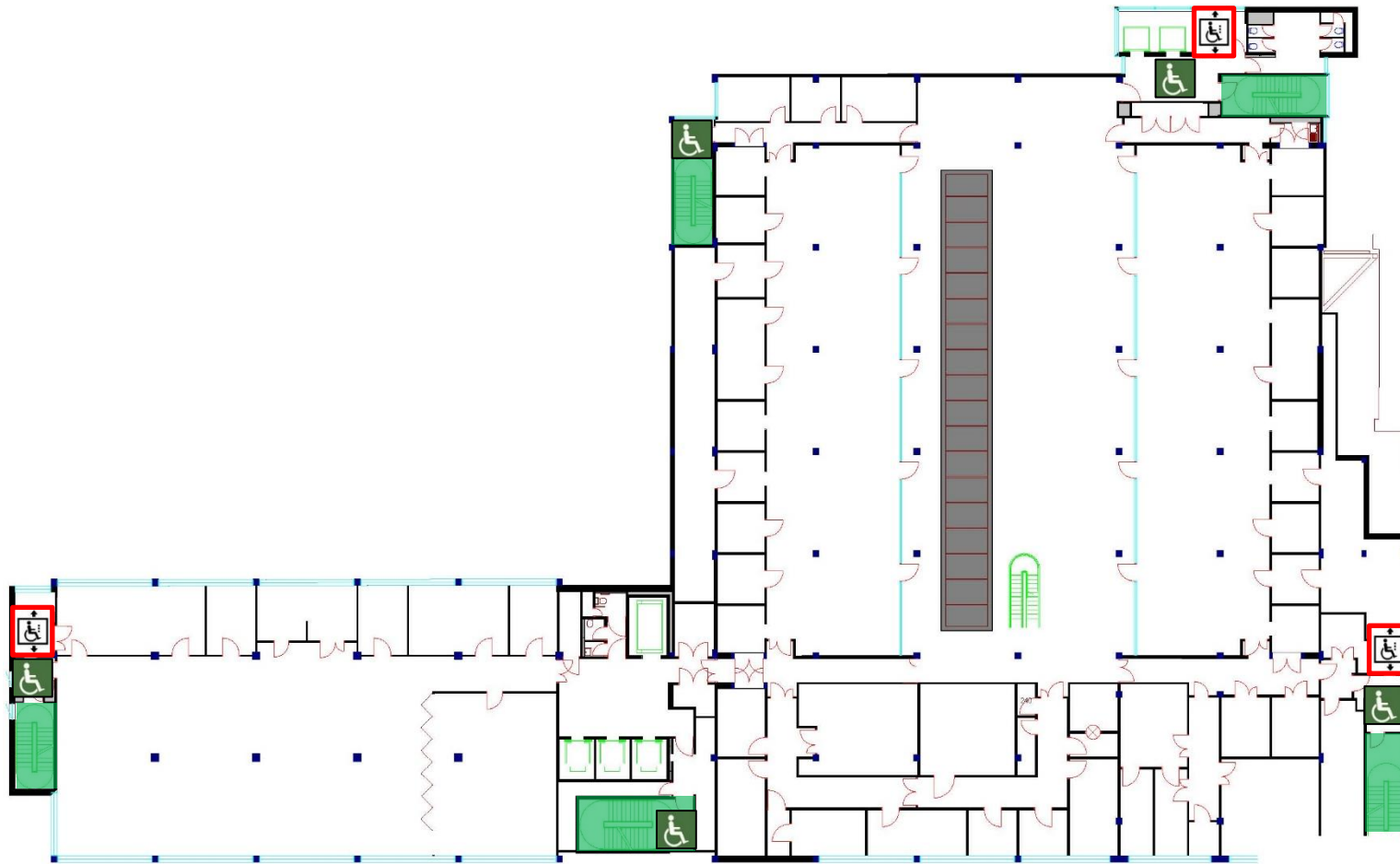
**Evacuation Lift**

**Fire Safety**

**General  
Emergency  
Evacuation  
Plan**

**Sir Alexander  
Fleming Building**

**Level: 2**



**KEY**



**Safe Route**



**Evac Chair**



**Refuge Point**



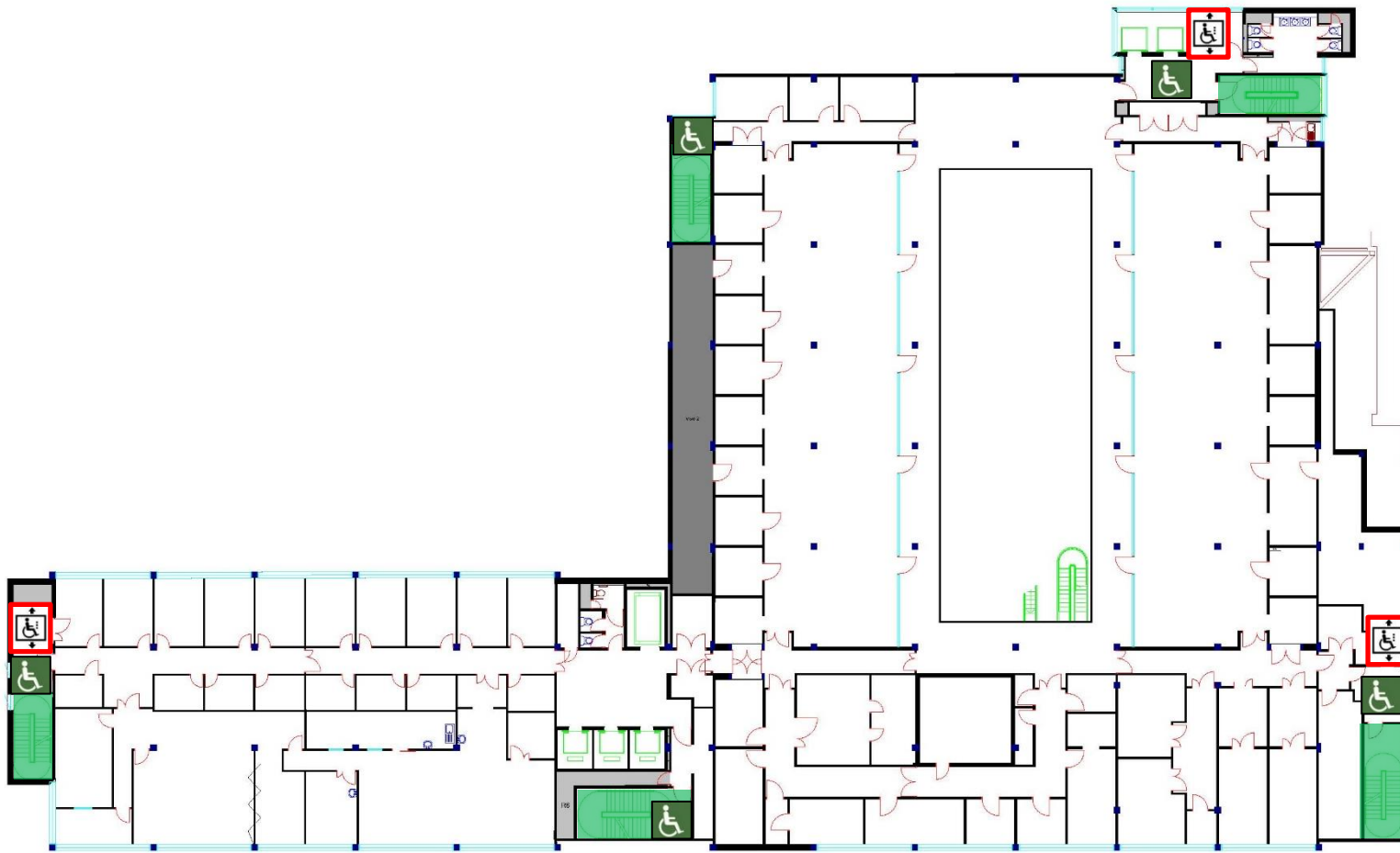
**Evacuation Lift**

**Fire Safety**

**General  
Emergency  
Evacuation  
Plan**

**Sir Alexander  
Fleming Building**

**Level: 3**



**KEY**



**Safe Route**



**Evac Chair**



**Refuge Point**



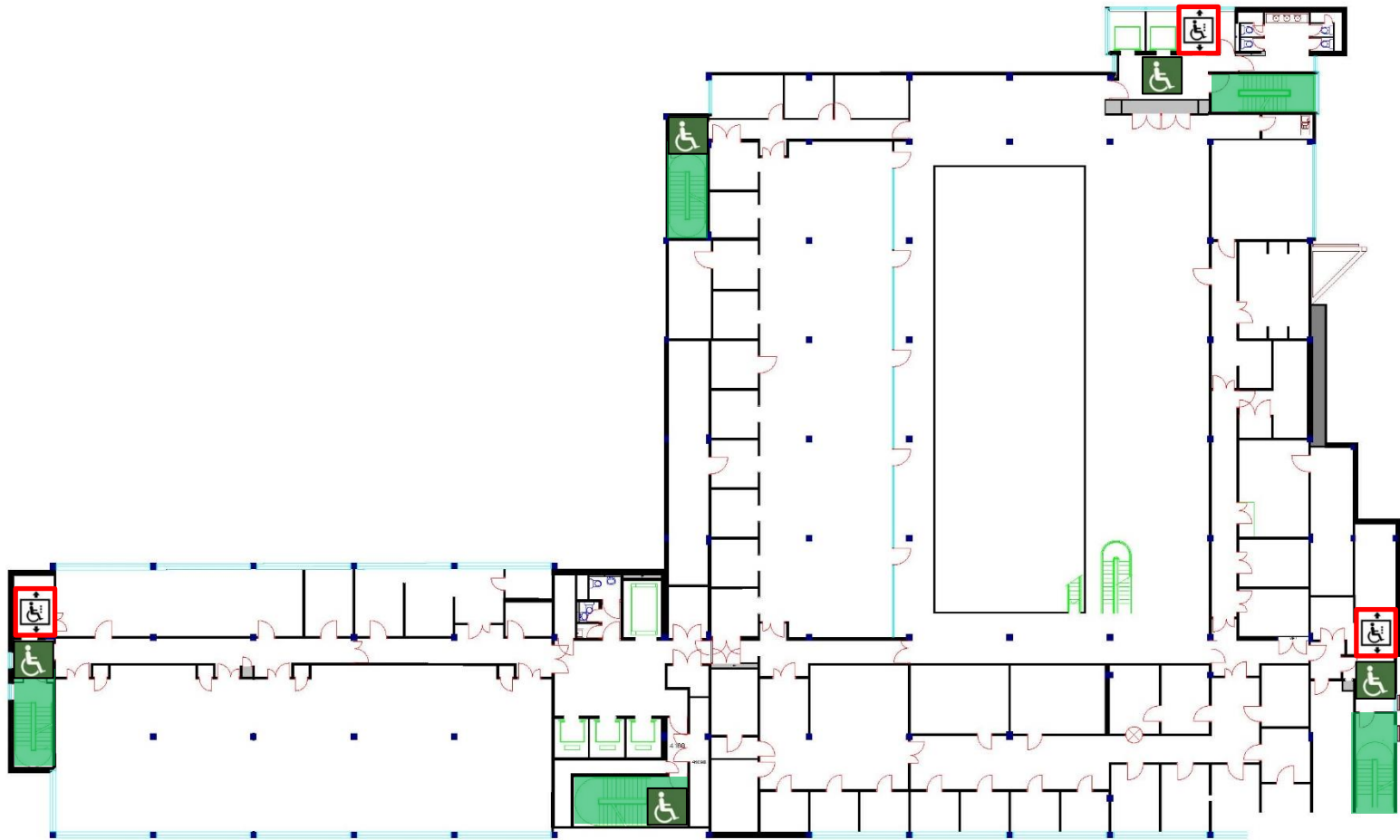
**Evacuation Lift**

**Fire Safety**

**General  
Emergency  
Evacuation  
Plan**

**Sir Alexander  
Fleming Building**

**Level: 4**



**KEY**



**Safe Route**



**Evac Chair**



**Refuge Point**



**Evacuation Lift**

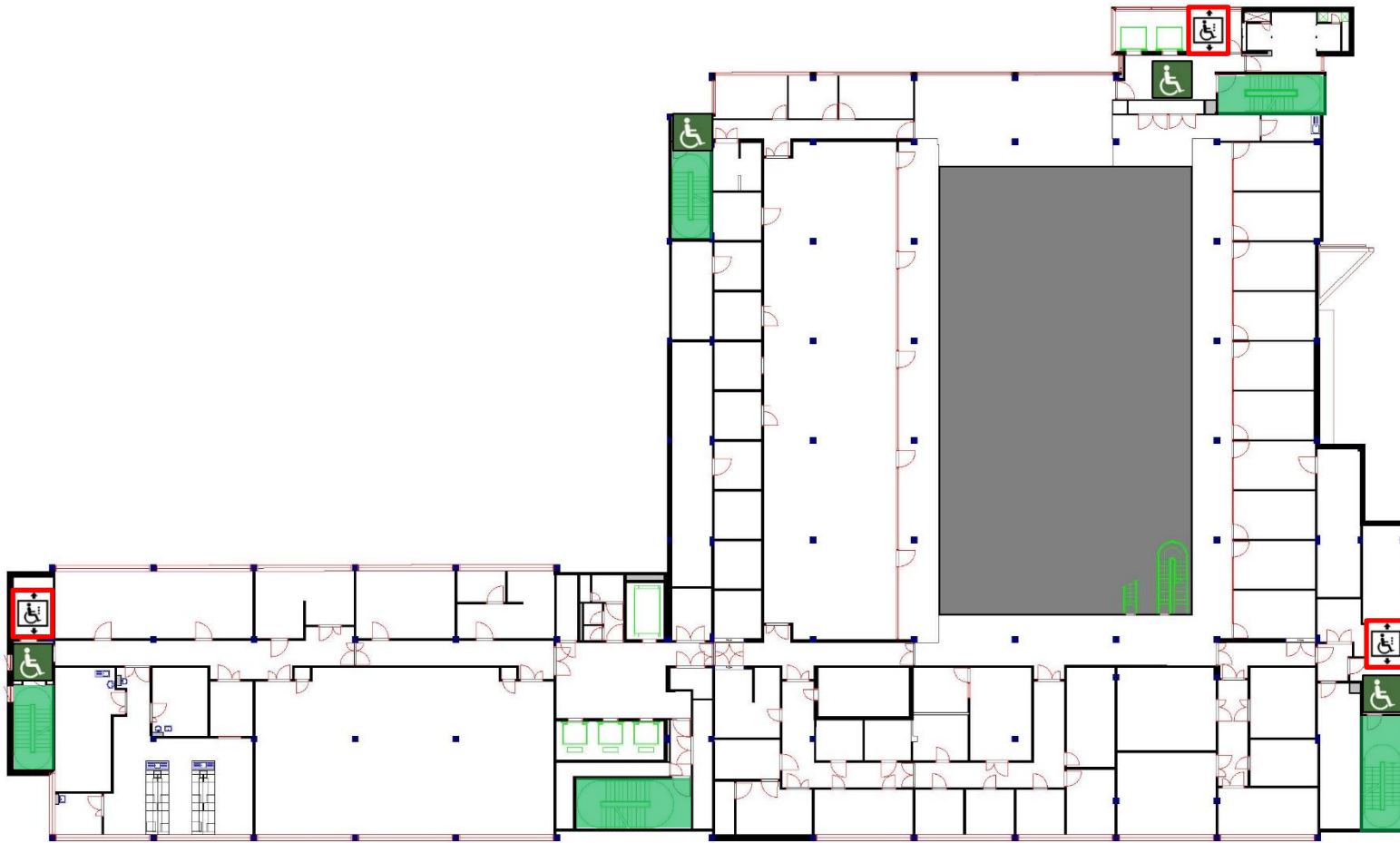


**Fire Safety**

**General  
Emergency  
Evacuation  
Plan**

**Sir Alexander  
Fleming Building**

**Level: 5**



**KEY**



**Safe Route**



**Evac Chair**



**Refuge Point**



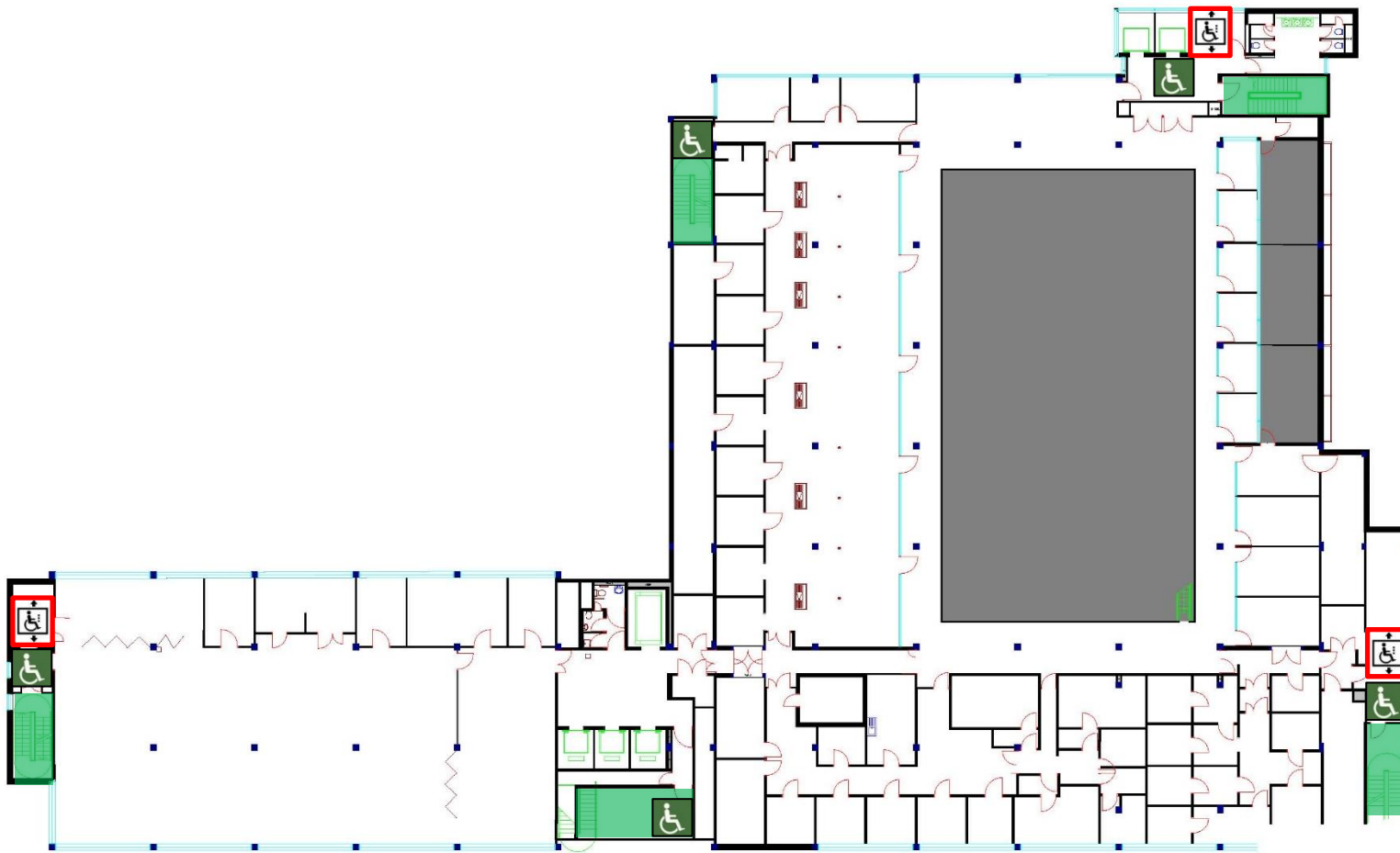
**Evacuation Lift**

**Fire Safety**

**General  
Emergency  
Evacuation  
Plan**

**Sir Alexander  
Fleming Building**

**Level: 6**



**KEY**



Safe Route



Evac Chair



Refuge Point



Evacuation Lift