

The purpose of a Generic Emergency Evacuation Plan (GEEP) is to enable visitors to the building with restricted mobility or those who may not be able to evacuate unaided to become familiar with the layout, evacuation procedures, available equipment and communication devices. If you feel that this document does not provide you with sufficient information or that you require further assistance, please contact the Imperial College London, Security Team on 020 7594 8910.

The building:

The Sherfield building is comprised of 6 floors. All floors are accessible by using the lifts. Emergency egress using these lifts is not possible during an evacuation. A safe refuge area is available in the H-Bar on the Basement level which is provided with an EVC System (Emergency Voice Communication System) which links directly to the security control room (see attached floor plan). There are multiple Fire Exits available from the building on the ground floor, most of which are Disabled Accessible. All fire exits on the North side of the building also open out onto the Sherfield Walkway at level 2 and from there escape is possible either towards the Huxley building or onto Dalby Court

Action required on hearing the Fire Alarm:

If able, you should leave the building immediately by the nearest fire exit (see attached floorplan) and report to the assigned assembly point for the building.

If you are unable to evacuate the building unaided, please proceed to one of the safe routes marked on the plan and contact Security on 0207 589 1000 to inform them of your location.

An EVC System (Emergency Voice Communication System) is available in the safe refuge. Use this to contact the security team and notify them of your location, details of which are printed on the front of the panel. Full details on how to use the emergency call point are also provided in the safe refuge.

Other recommendations:

It is recommended that all visitors to Imperial College London, should familiarise themselves with the fire alarm signals and floor layout of the building they are in. Floor plans and evacuation equipment locations have been provided with this document.

Equipment provided:

There are four disabled access fire exits in the building with two in the main foyer at the west of the building and two at the east end which exit to either the Queens Terrace or the Ayrton Road loading bay. (See attached floor plan).

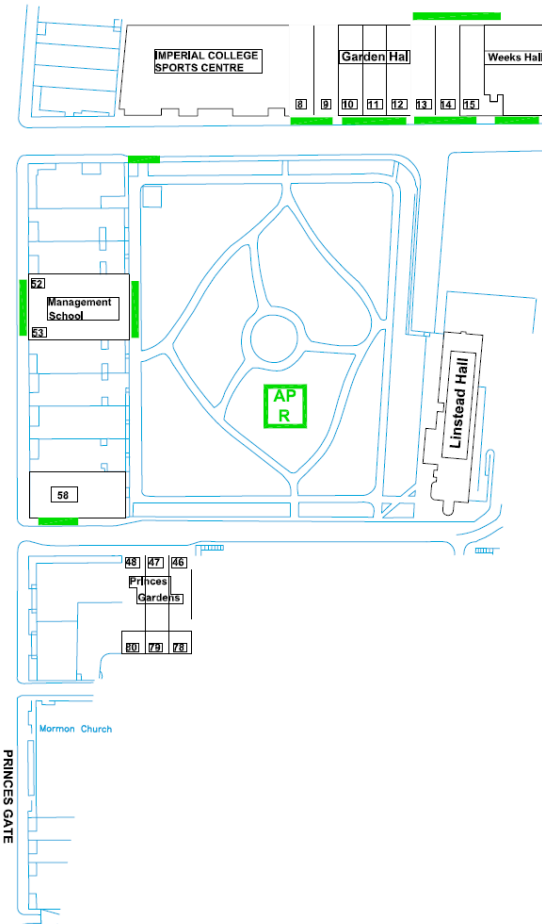
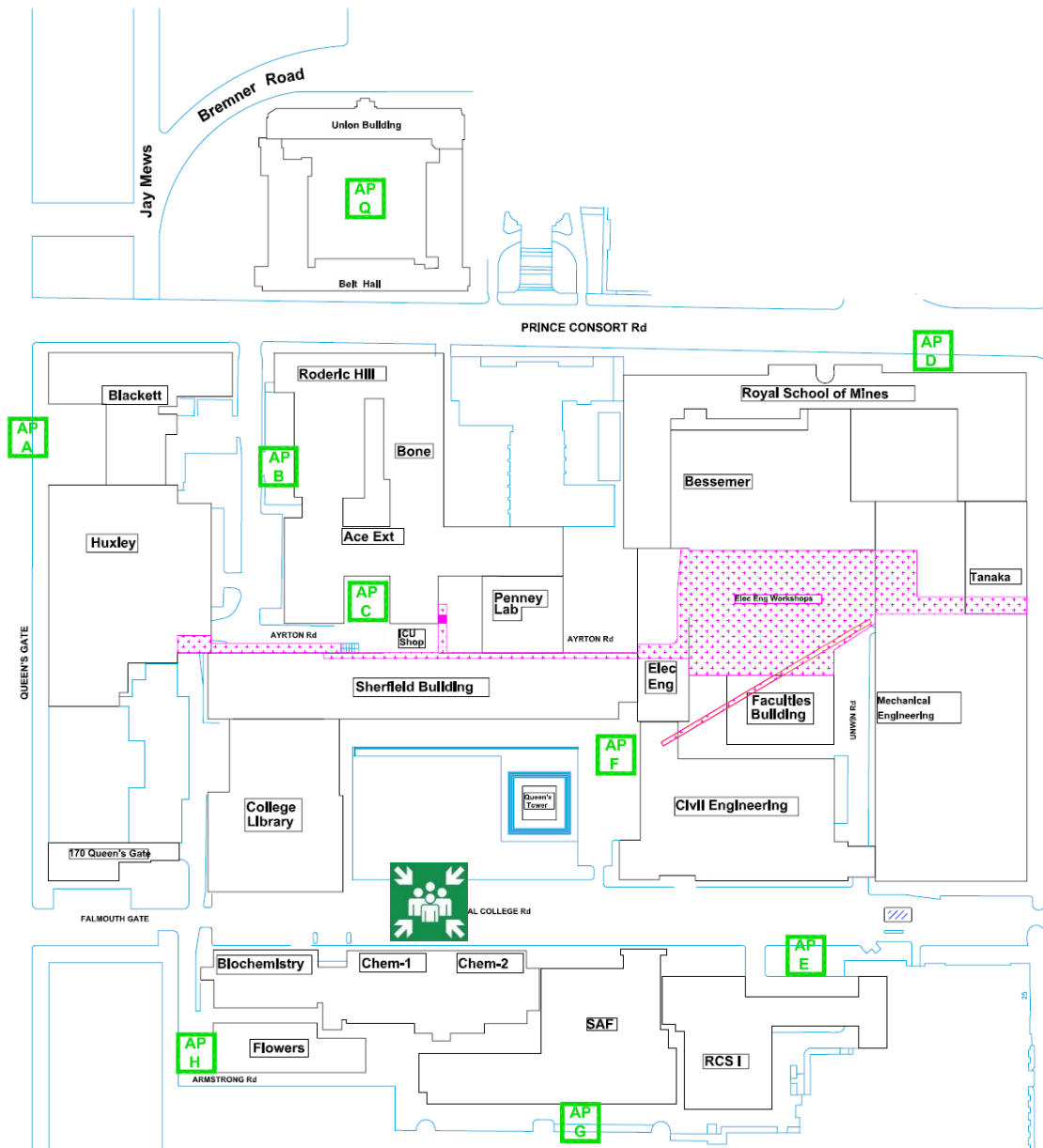
A safe refuge area with an EVC System (Emergency Voice Communication System) is available at the south west stair core of the H-Bar in the basement.

A vibrating alert system is installed in this building. If you would like access to a pager, please contact Imperial College London, Security Team on 020 7594 8910.

Fire Safety

General Emergency Evacuation Plan

Assembly Point



KEY
● **AP** Site Assembly Points
● **F** Sherfield Building Assembly Point

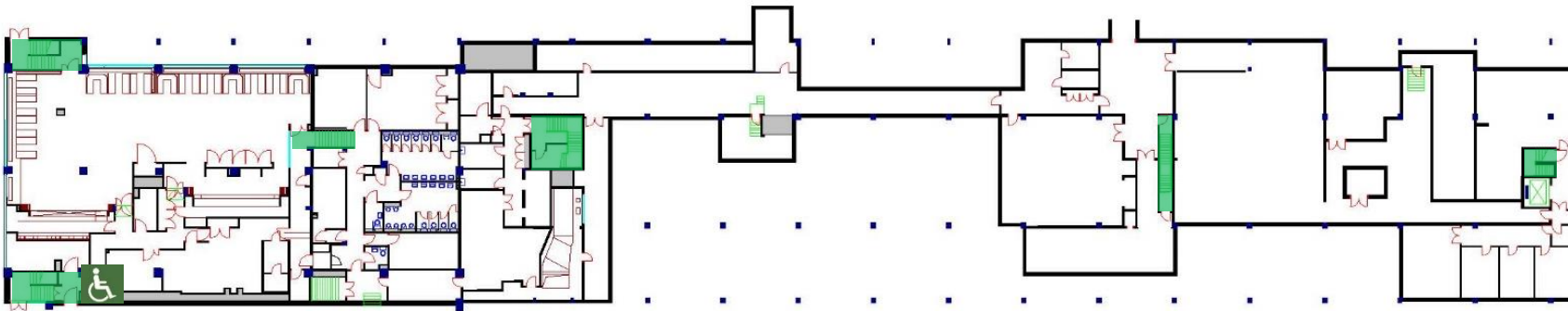
**Sherfield Building
Assembly Point**

Fire Safety

**General
Emergency
Evacuation
Plan**

**Sherfield
Building**

**Level:
Basement**



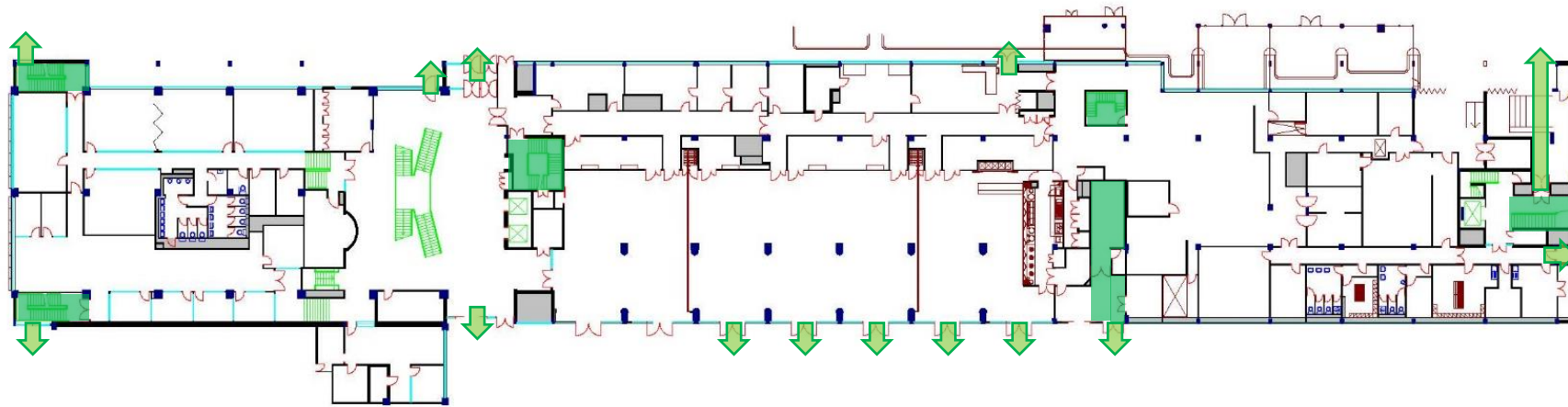
KEY ● ● **Safe Route**  **Evac Chair**  **Refuge Point**

Fire Safety

**General
Emergency
Evacuation
Plan**

**Sherfield
Building**

Level: 1



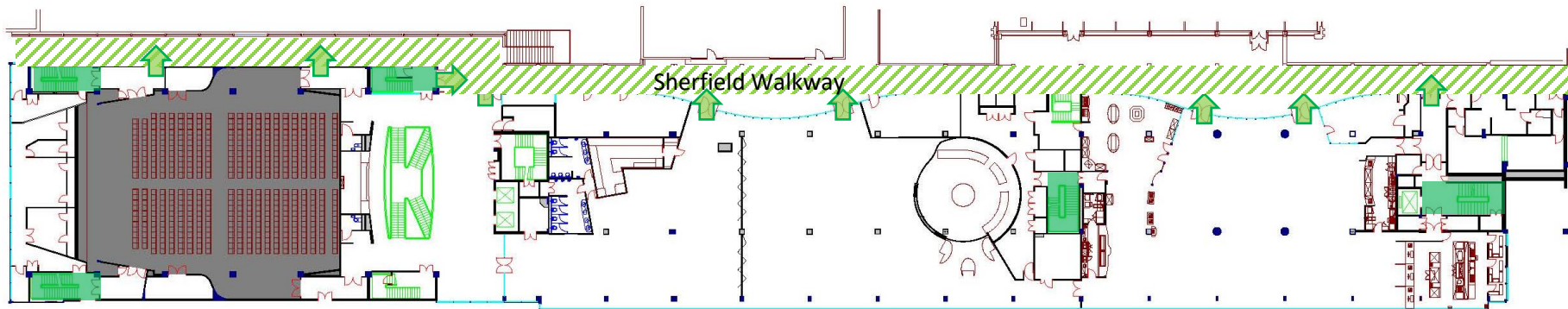
KEY ● ●  Safe Route  Evac Chair  Refuge Point

Fire Safety

**General
Emergency
Evacuation
Plan**

**Sherfield
Building**

Level: 2



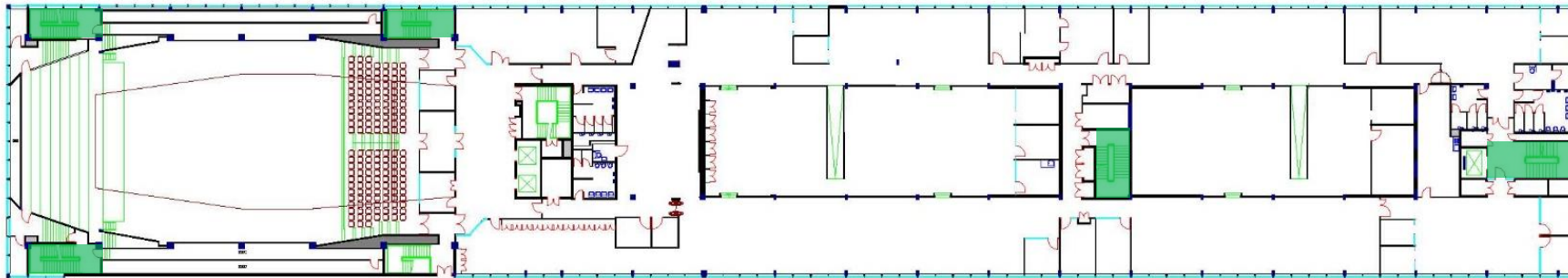
- KEY**
- ● Safe Route
 - Evac Chair
 - Refuge Point

Fire Safety

**General
Emergency
Evacuation
Plan**

**Sherfield
Building**

Level: 3



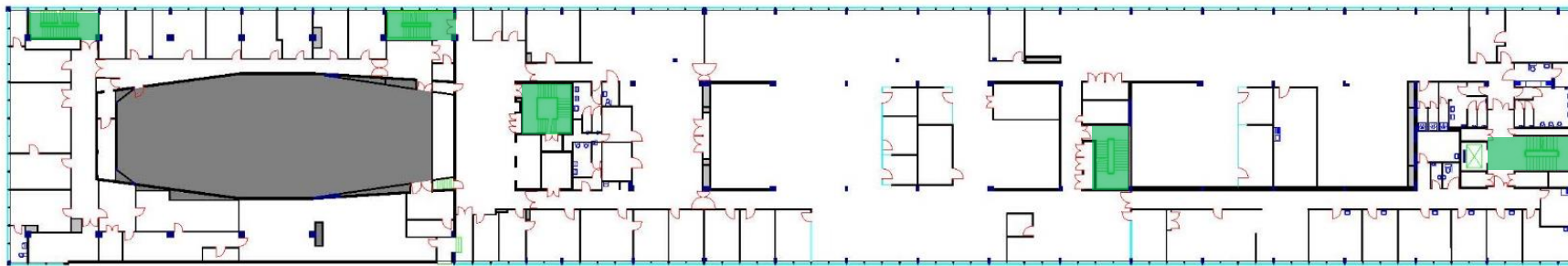
KEY ● ●  Safe Route  Evac Chair  Refuge Point

Fire Safety

**General
Emergency
Evacuation
Plan**

**Sherfield
Building**

Level: 4



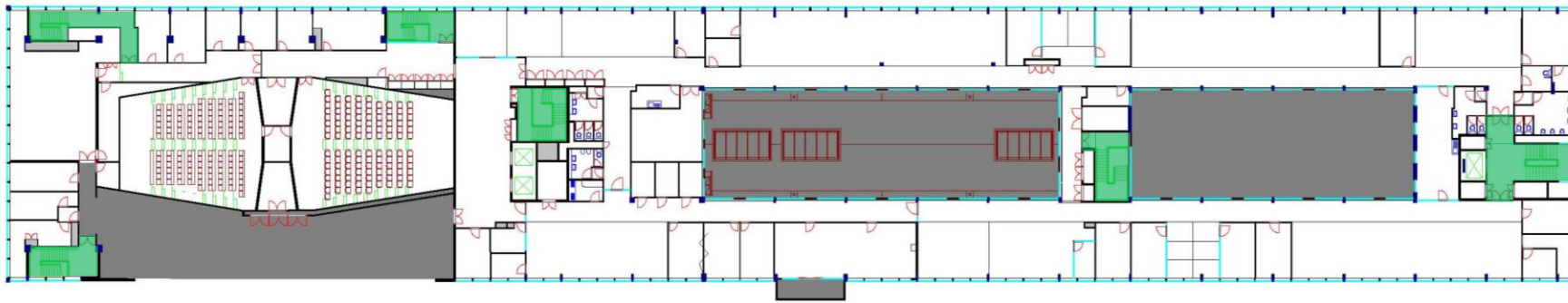
KEY ● ●  Safe Route  Evac Chair  Refuge Point

Fire Safety

**General
Emergency
Evacuation
Plan**

**Sherfield
Building**

Level: 5



- KEY**
- ● Safe Route
 - Evac Chair
 - Refuge Point

Fire Safety

**General
Emergency
Evacuation
Plan**

**Sherfield
Building**

**Level:
Blyth/S.A.L.C**



KEY



Safe Route



Evac Chair



Refuge Point



S.A.L.C



Blyth Centre