

The purpose of a Generic Emergency Evacuation Plan (GEEP) is to enable visitors to the building with restricted mobility or those who may not be able to evacuate unaided to become familiar with the layout, evacuation procedures, available equipment and communication devices. If you feel that this document does not provide you with sufficient information or that you require further assistance, please contact the Imperial College London, Security Team on 020 7594 8910.

**The building:**

The RCS1 building is comprised of 3 floors with a mezzanine level. All floors (except for the mezzanine) are accessible by using the lift. Safe refuge areas are available in the central stair core (see plan). There are five exits from the building, four of which are on the ground floor and are accessible by wheelchair. The lift can be used by trained staff during an evacuation. Evacuation via the Dyson building is available for building users on the mezzanine floor via the Level 2 walkway.

**Action required on hearing the Fire Alarm:**

If able, you should leave the building immediately by the nearest fire exit (see attached floorplan) and report to the assigned assembly point for the building.

If you are unable to evacuate the building unaided, please proceed to one of the safe refuges located in each stair core (see attached floor plan) and inform Security of your location on 020 7589 1000.

**Other recommendations:**

It is recommended that all visitors to Imperial College London, should familiarise themselves with the fire alarm signals and floor layout of the building they are in. Floor plans and evacuation equipment locations have been provided with this document.

**Equipment provided:**

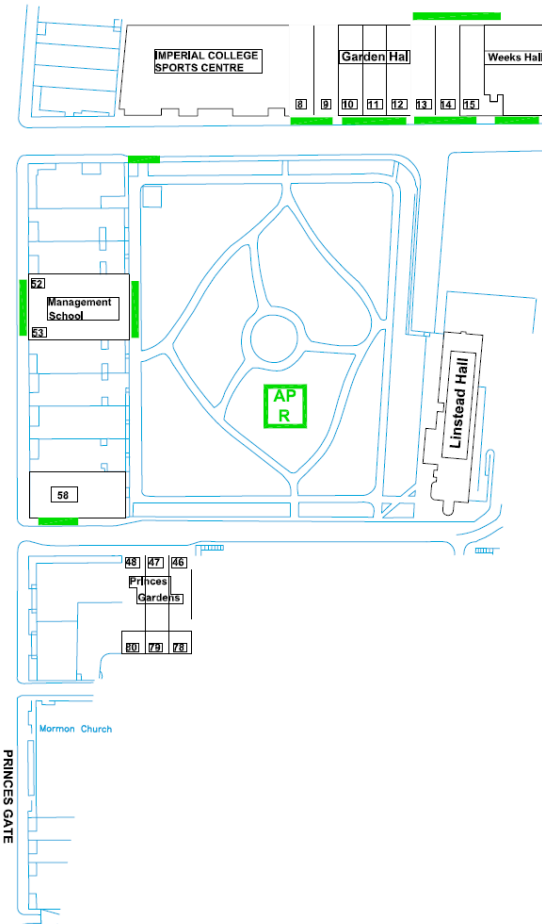
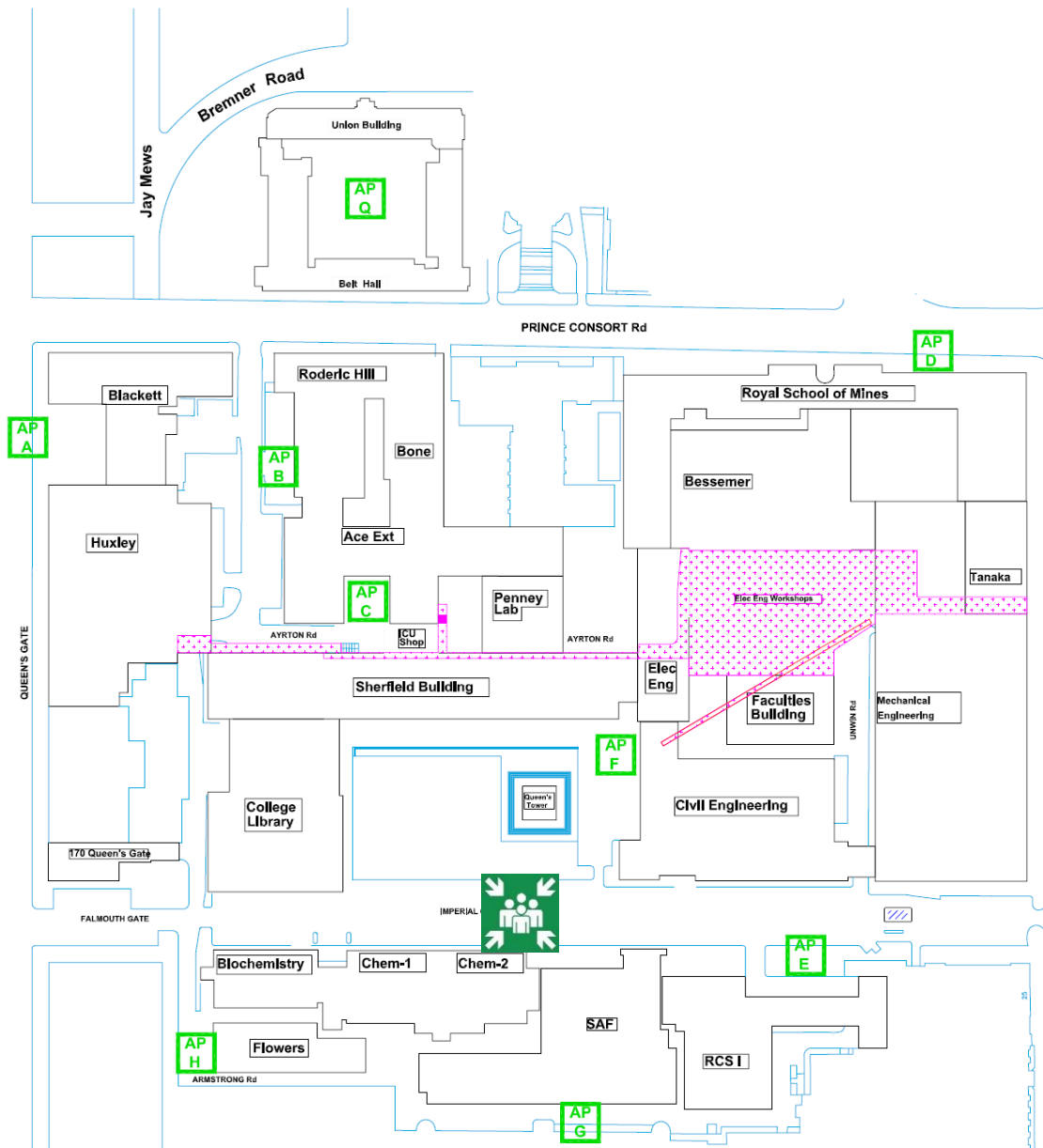
All ground floor fire escapes lead out onto level ground and can be accessed by wheelchair.

**A vibrating alert system is installed in this building. If you would like access to a pager, please contact Imperial College London, Security Team on 020 7594 8910.**

Fire Safety

General  
Emergency  
Evacuation  
Plan

Assembly  
Point



**KEY**  
● **AP** Site Assembly  
● **F** Points

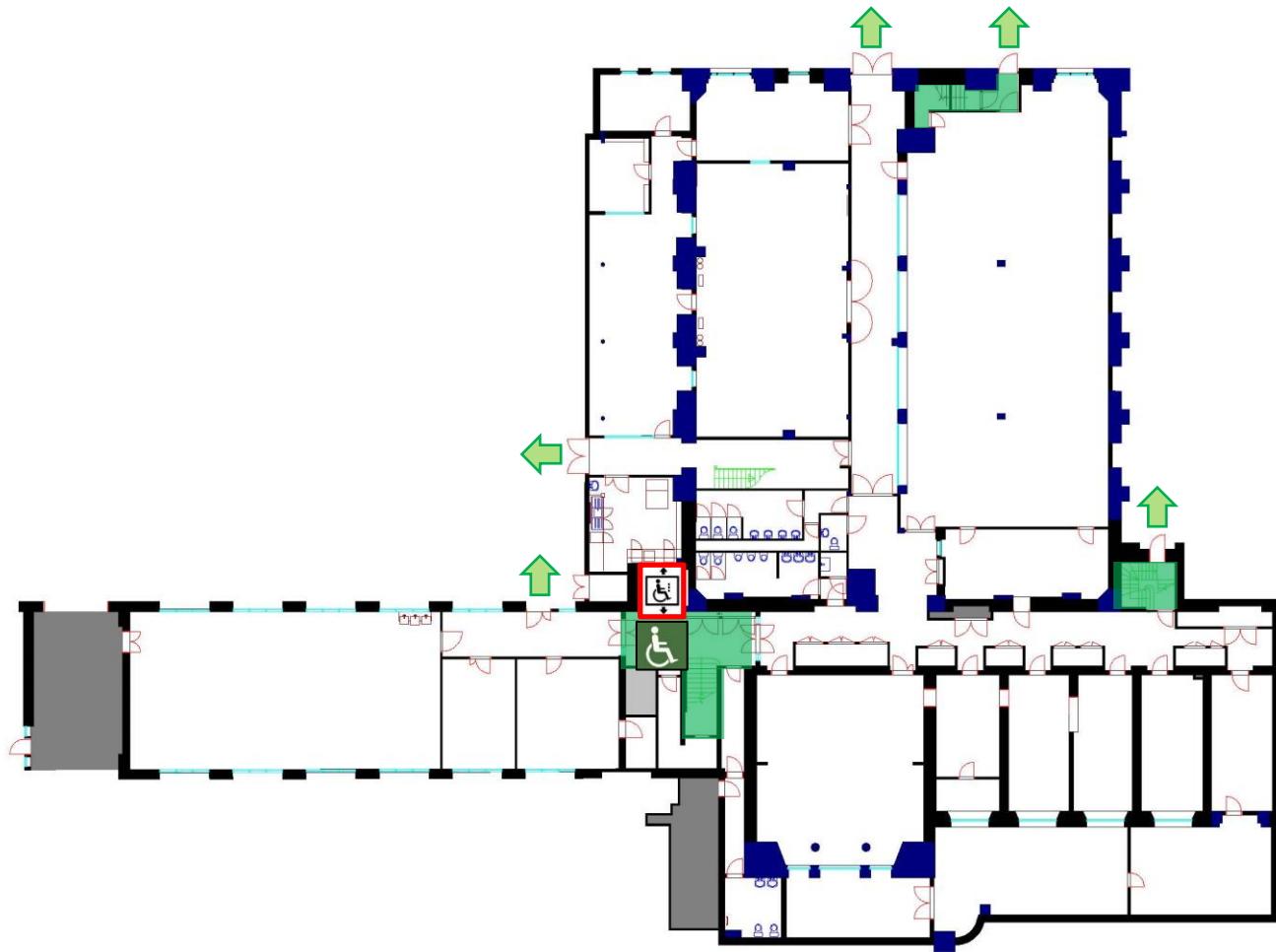
 **RCS1 Building  
Assembly Point**

**Fire Safety**

**General  
Emergency  
Evacuation  
Plan**

**RCS1  
Building**

**Level: 0**



**KEY**



Safe Route



Evac Chair



Refuge Point



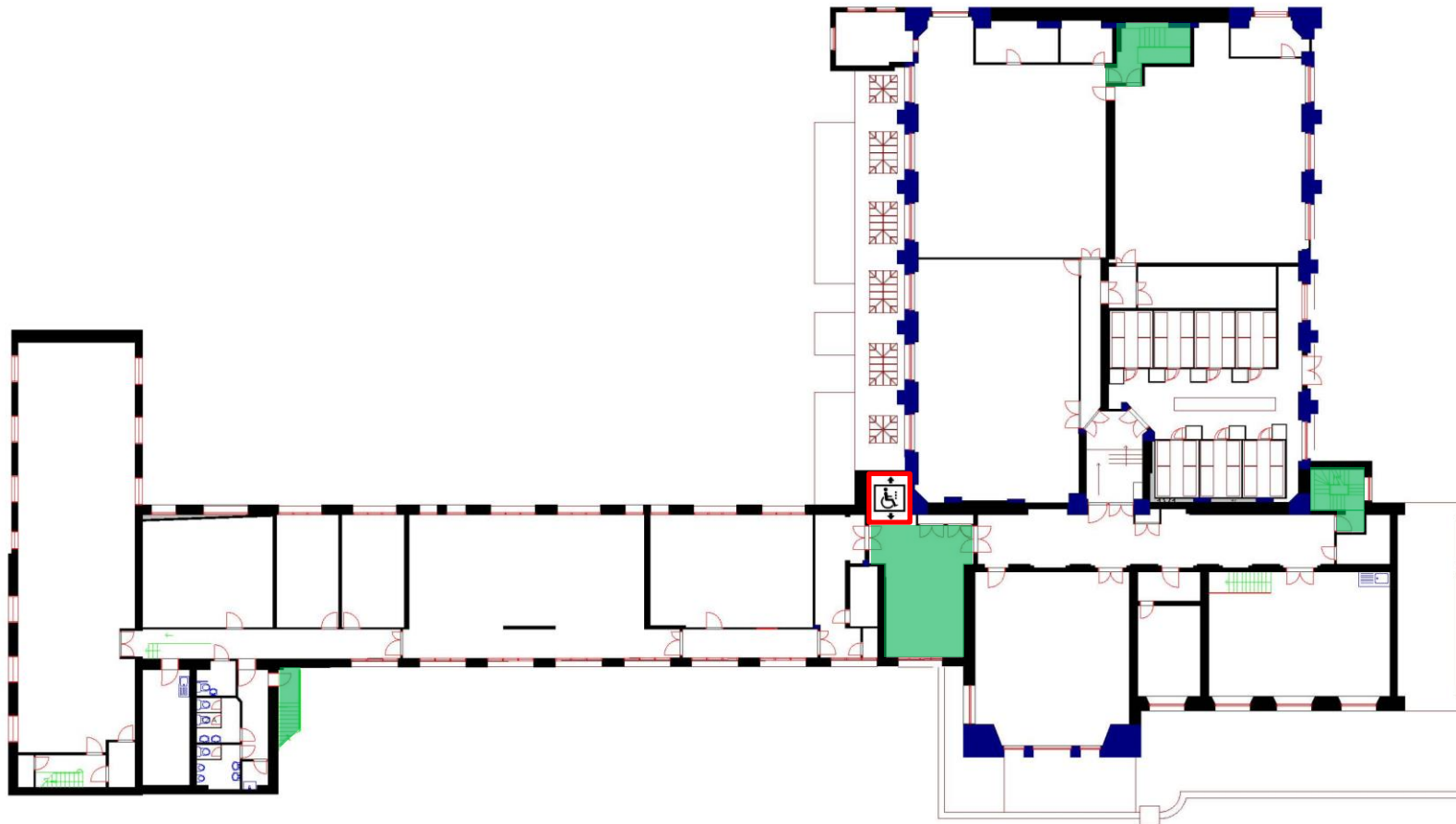
Evacuation Lift

**Fire Safety**

**General  
Emergency  
Evacuation  
Plan**

**RCS1  
Building**

**Level: 1**



**KEY**



Safe Route



Evac Chair



Refuge Point



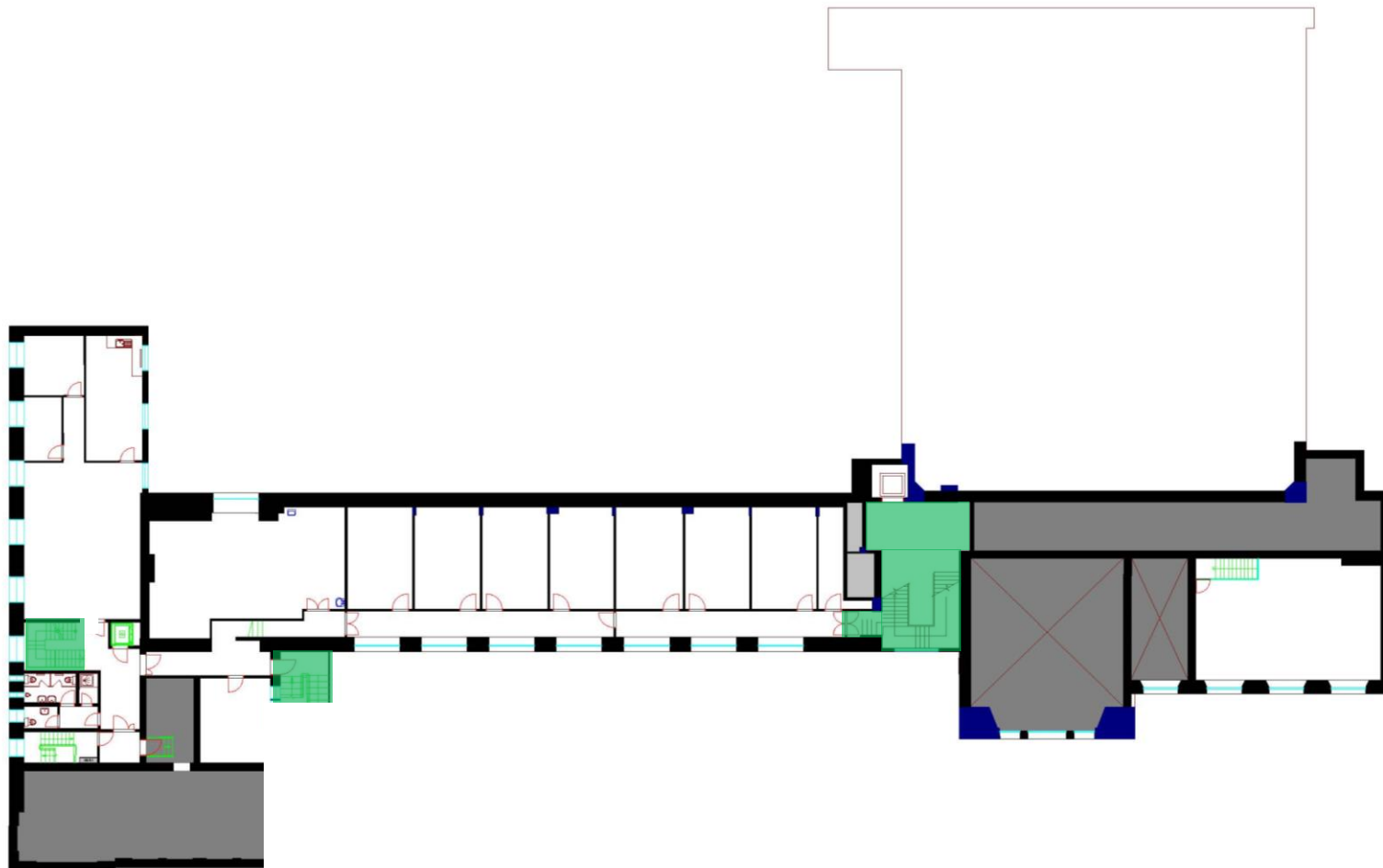
Evacuation Lift

**Fire Safety**

**General  
Emergency  
Evacuation  
Plan**

**RCS1  
Building**

**Level:  
Mezzanine**



**KEY**



Safe Route



Evac Chair



Refuge Point



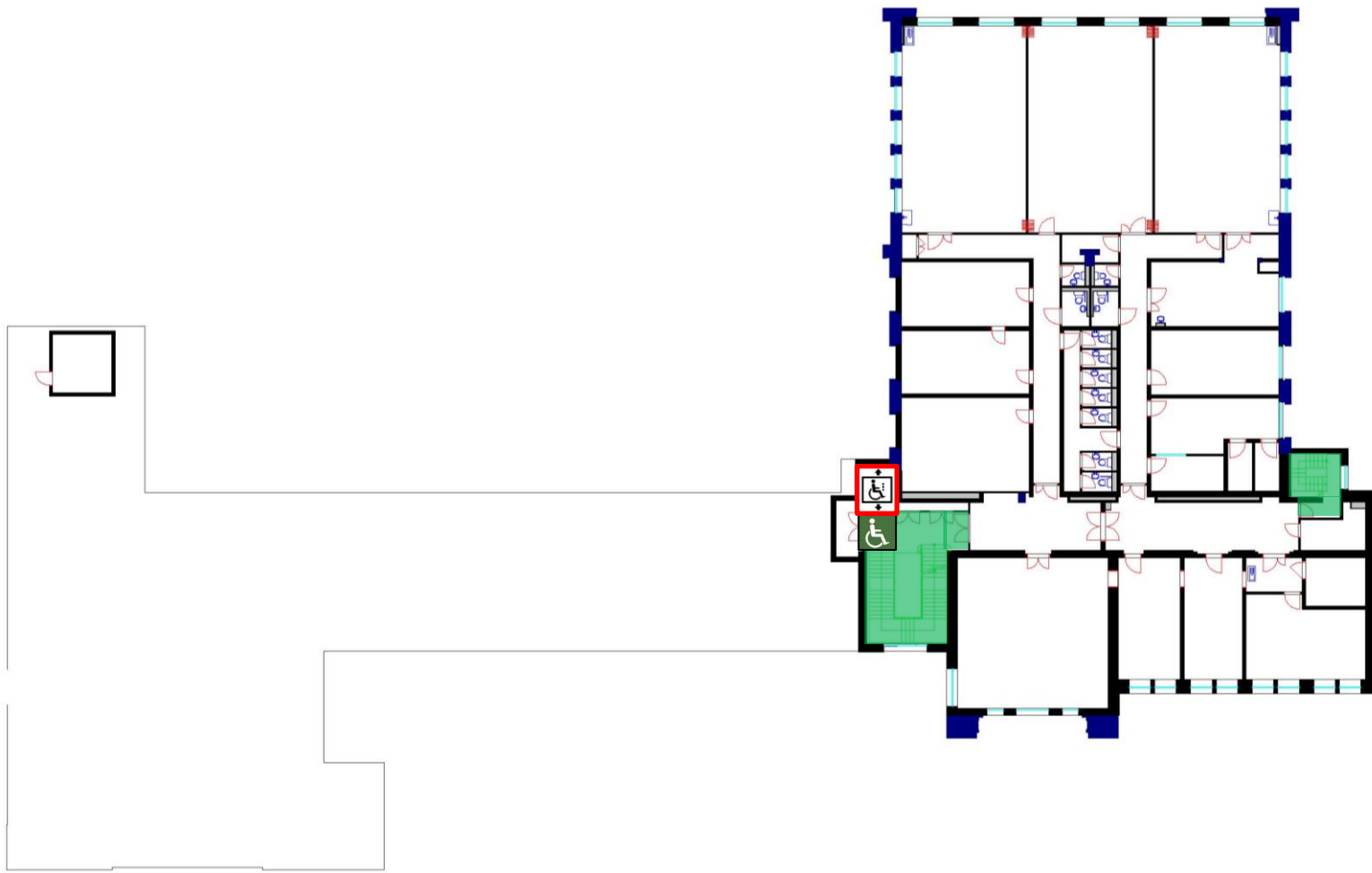
Evacuation Lift

**Fire Safety**

**General  
Emergency  
Evacuation  
Plan**

**RCS1  
Building**

**Level: 2**



**KEY**



Safe Route



Evac Chair



Refuge Point



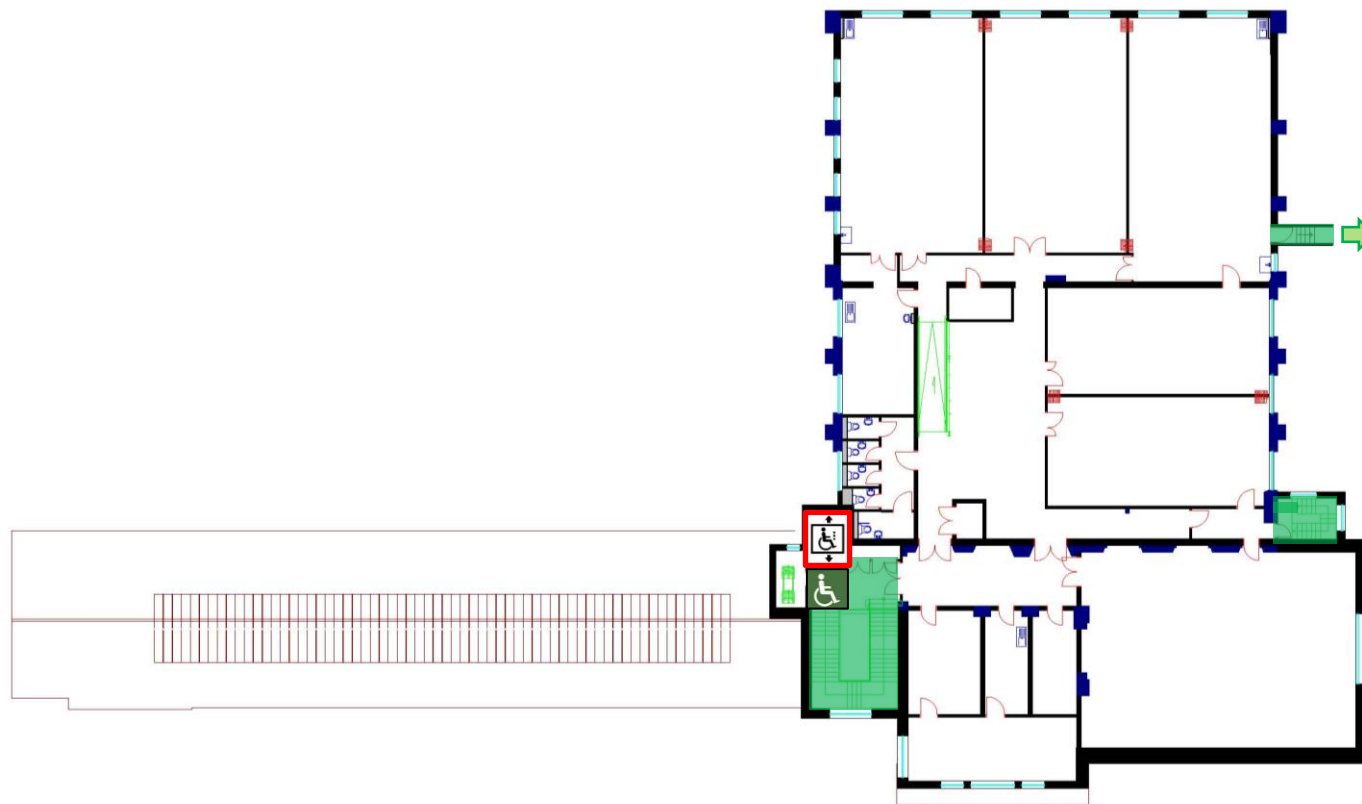
Evacuation Lift

**Fire Safety**

**General  
Emergency  
Evacuation  
Plan**

**RCS1  
Building**

**Level: 3**



**KEY**



Safe Route



Evac Chair



Refuge Point



Evacuation Lift