

The purpose of a Generic Emergency Evacuation Plan (GEEP) is to enable visitors to the building with restricted mobility or those who may not be able to evacuate unaided to become familiar with the layout, evacuation procedures, available equipment and communication devices. If you feel that this document does not provide you with sufficient information or that you require further assistance, please contact the Imperial College London, Security Team on 020 7594 8910.

**The building:**

The Huxley building is comprised of 13 floors only 8 of which cover the entire footprint of the building. The remaining 5 floors constitute a tower on the side of the Blackett Building. All floors are accessible by using the lifts. Emergency egress using the lift in the central core is possible during an evacuation (see plan). A safe refuge area is available in the central stair core on floors 0 to 7 and provides an EVC System (Emergency Voice Communication System) which links directly to the security control room (see attached floor plan). There is one fire exit from level 0, four exits on level 1 and two exits on level 2. Horizontal evacuation is possible into the Huxley building on levels 4 to 11 (see plan).

**Action required on hearing the Fire Alarm:**

If able, you should leave the building immediately by the nearest fire exit (see attached floorplan) and report to the assigned assembly point for the building.

If you are unable to evacuate the building unaided, please proceed to one of the safe refuges located in each stair core (see attached floor plan).

An EVC System (Emergency Voice Communication System) is available in each safe refuge. Use this to contact the security team and notify them of your location, details of which are printed on the front of the panel. Full details on how to use the emergency call point are also provided in the safe refuge.

**Other recommendations:**

It is recommended that all visitors to Imperial College London, should familiarise themselves with the fire alarm signals and floor layout of the building they are in. Floor plans and evacuation equipment locations have been provided with this document.

**Equipment provided:**

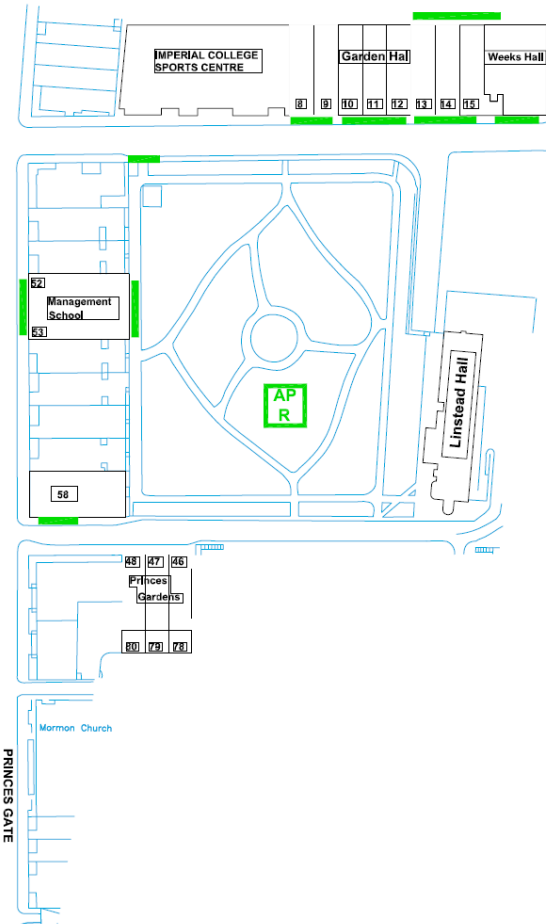
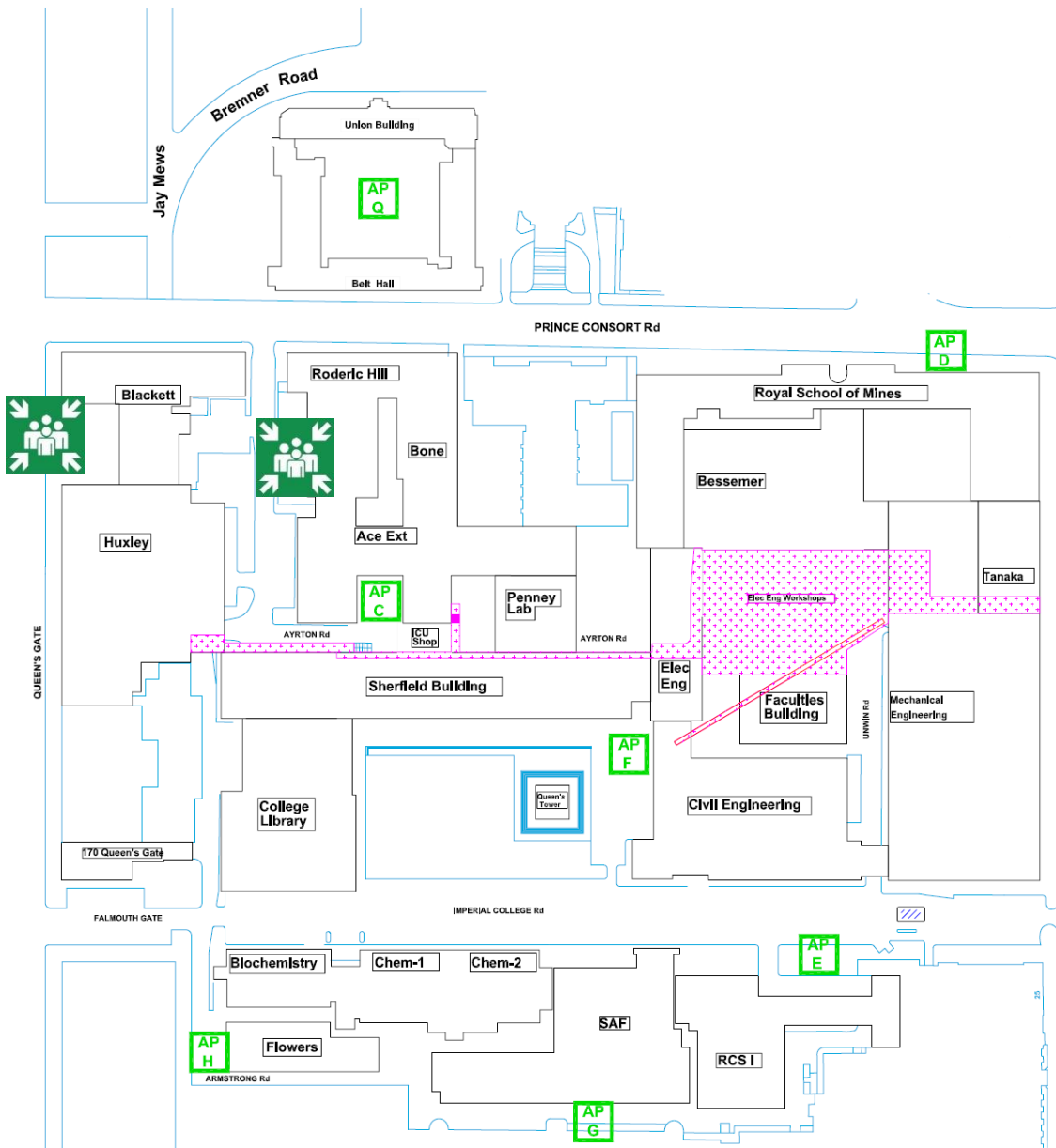
Safe refuge areas with EVC System (Emergency Voice Communication System) are available on the central stair core on levels 0 to 7.

**A vibrating alert system is installed in this building. If you would like access to a pager, please contact Imperial College London, Security Team on 020 7594 8910.**

Fire Safety

General  
Emergency  
Evacuation  
Plan

Assembly  
Point



**KEY** ● **AP** Site Assembly Points

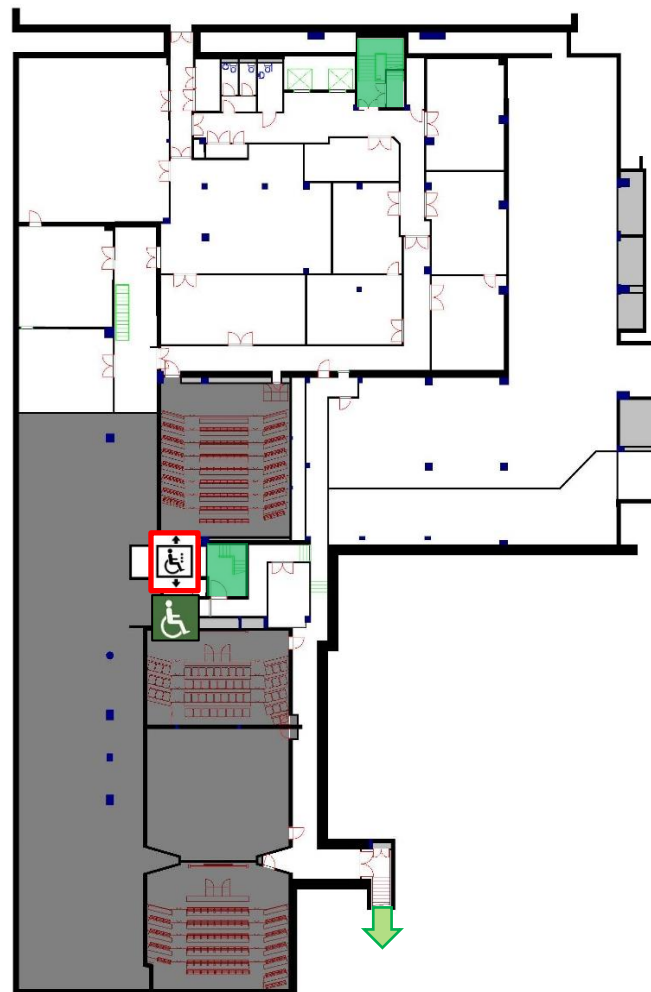
● **F** Huxley Building Assembly Points

**Fire Safety**

**General  
Emergency  
Evacuation  
Plan**

**Huxley  
Building**

**Level: 0**



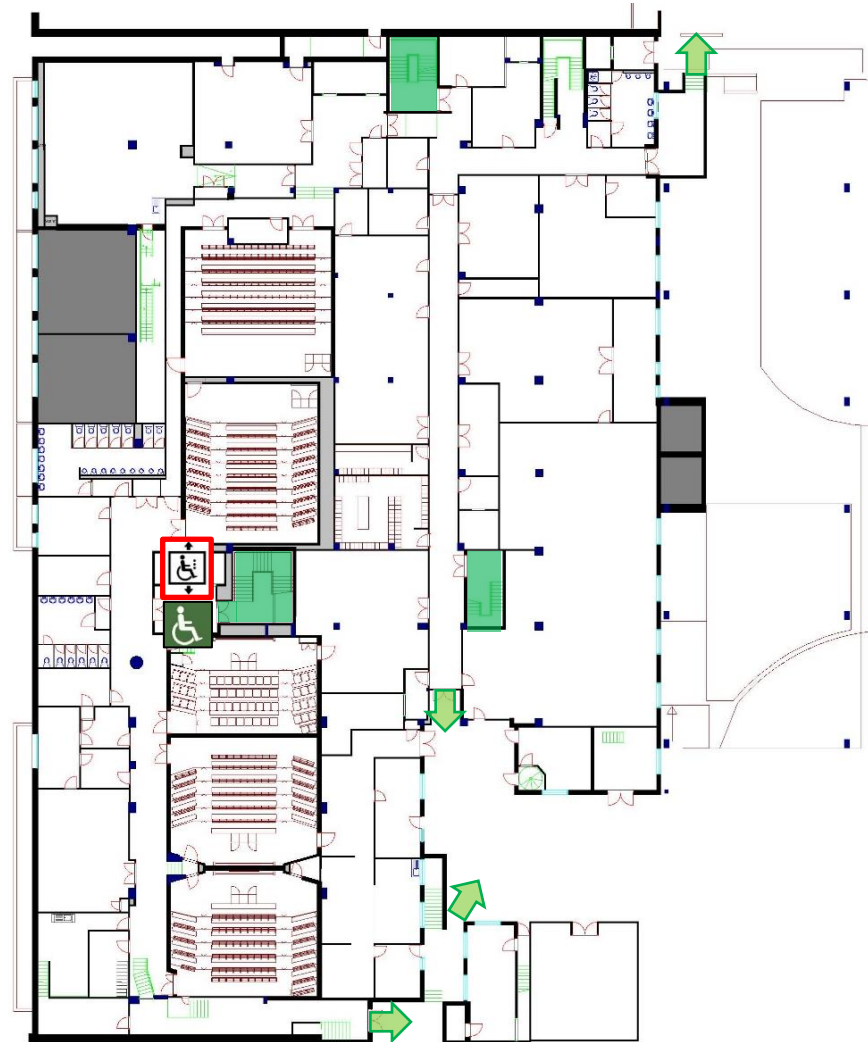
**KEY** ● ● **Safe Route**  **Evac Lift**  **Refuge Point**

**Fire Safety**

**General  
Emergency  
Evacuation  
Plan**

**Huxley  
Building**

**Level: 1**



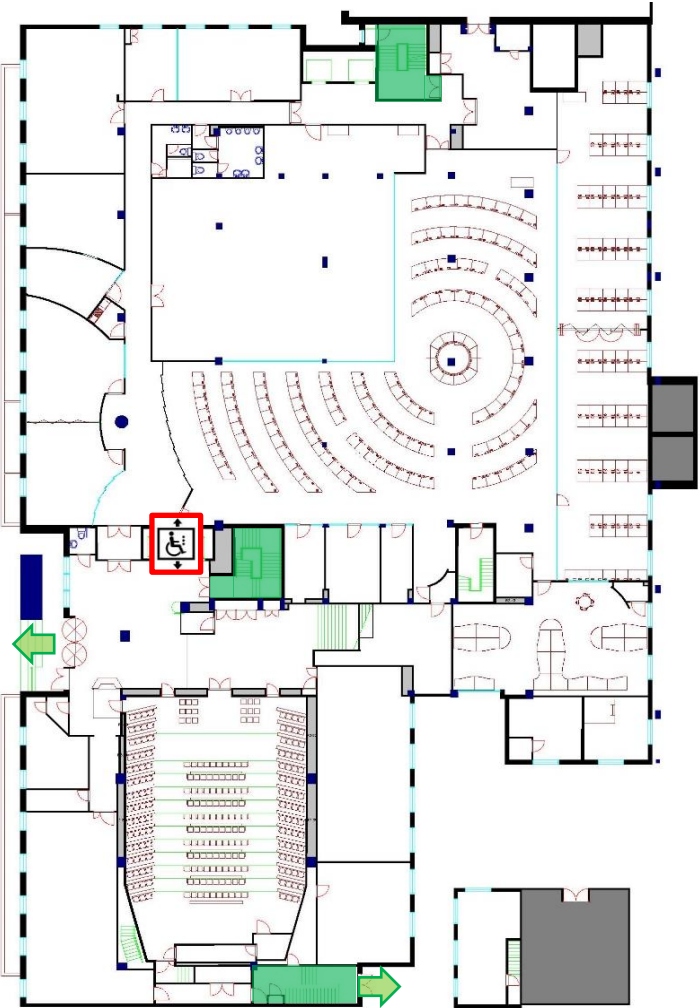
- KEY**
- ● Safe Route
  - (wheelchair icon with vertical arrows) Evac Lift
  - (wheelchair icon) Refuge Point

**Fire Safety**

**General  
Emergency  
Evacuation  
Plan**

**Huxley  
Building**

**Level: 2**



**KEY**



**Safe Route**



**Evac Lift**



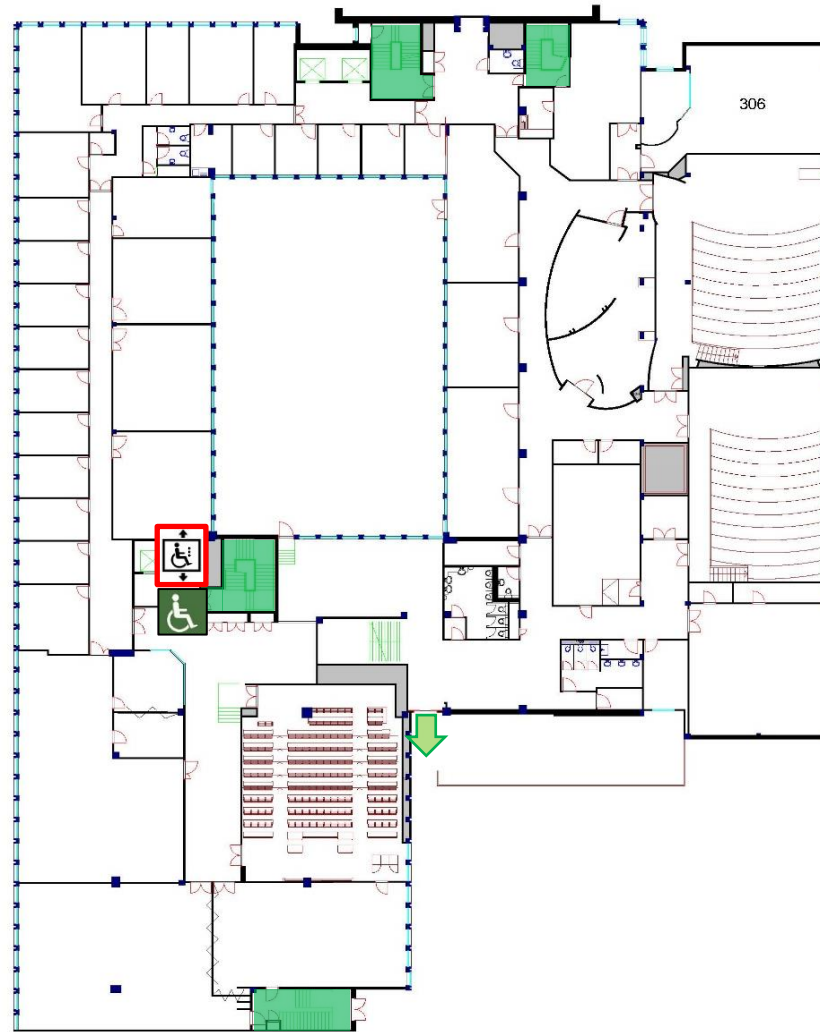
**Refuge Point**

**Fire Safety**

**General  
Emergency  
Evacuation  
Plan**

**Huxley  
Building**

**Level: 3**



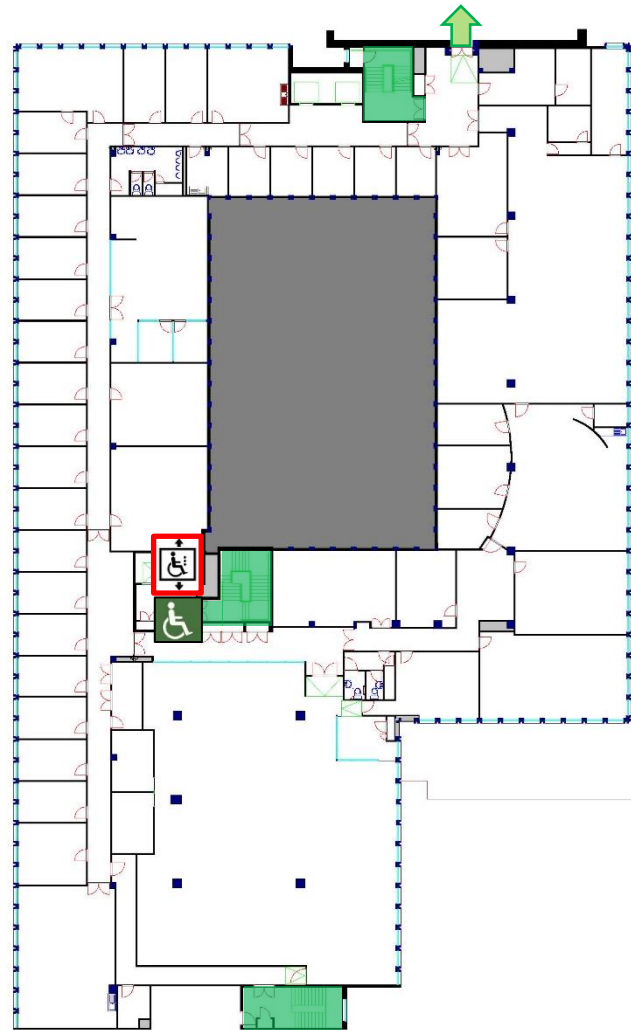
- KEY**
- ● Safe Route
  - Safe Route
  - (with wheelchair icon) Evac Lift
  - (with wheelchair icon) Refuge Point

**Fire Safety**

**General  
Emergency  
Evacuation  
Plan**

**Huxley  
Building**

**Level: 4**



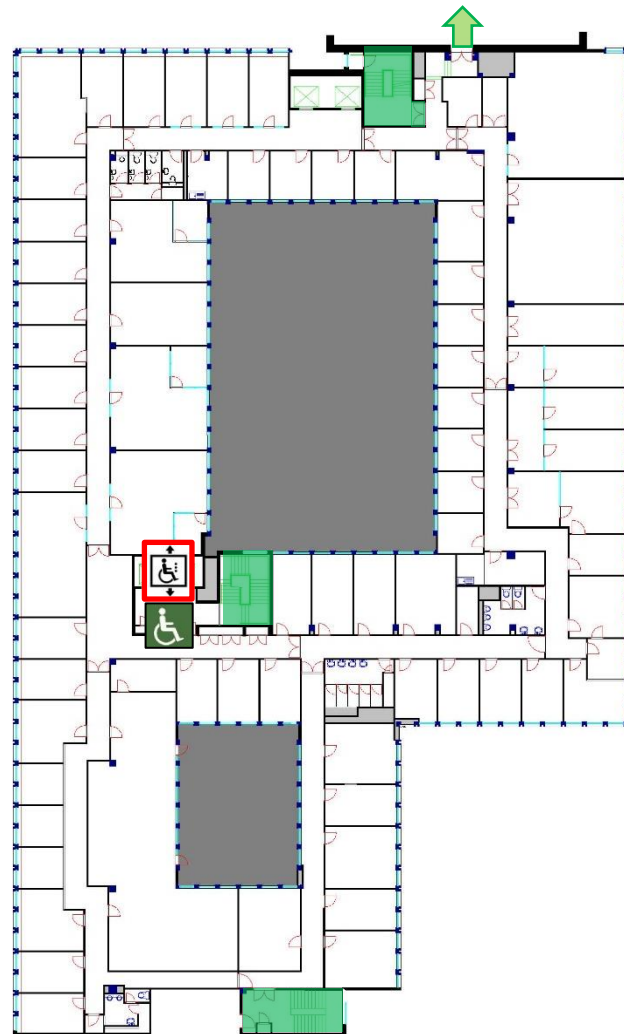
- KEY**
- ● Safe Route
  - □ Evac Lift
  - □ Refuge Point

**Fire Safety**

**General  
Emergency  
Evacuation  
Plan**

**Huxley  
Building**

**Level: 5**



- KEY**
- ● Safe Route
  - (with wheelchair icon and vertical double-headed arrow) Evac Lift
  - (with wheelchair icon) Refuge Point

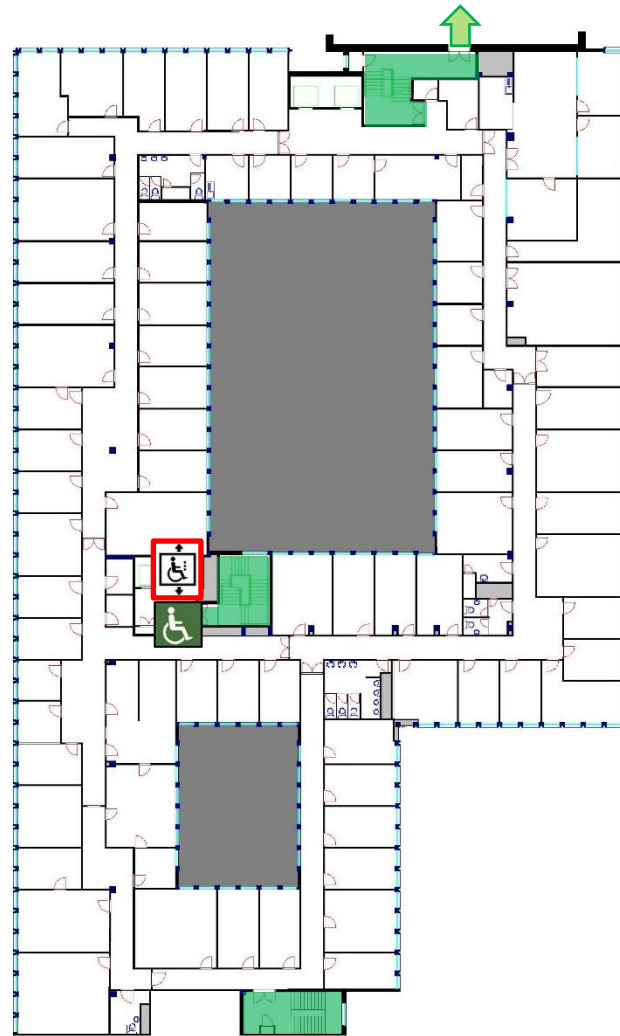


**Fire Safety**

**General  
Emergency  
Evacuation  
Plan**

**Huxley  
Building**

**Level: 6**



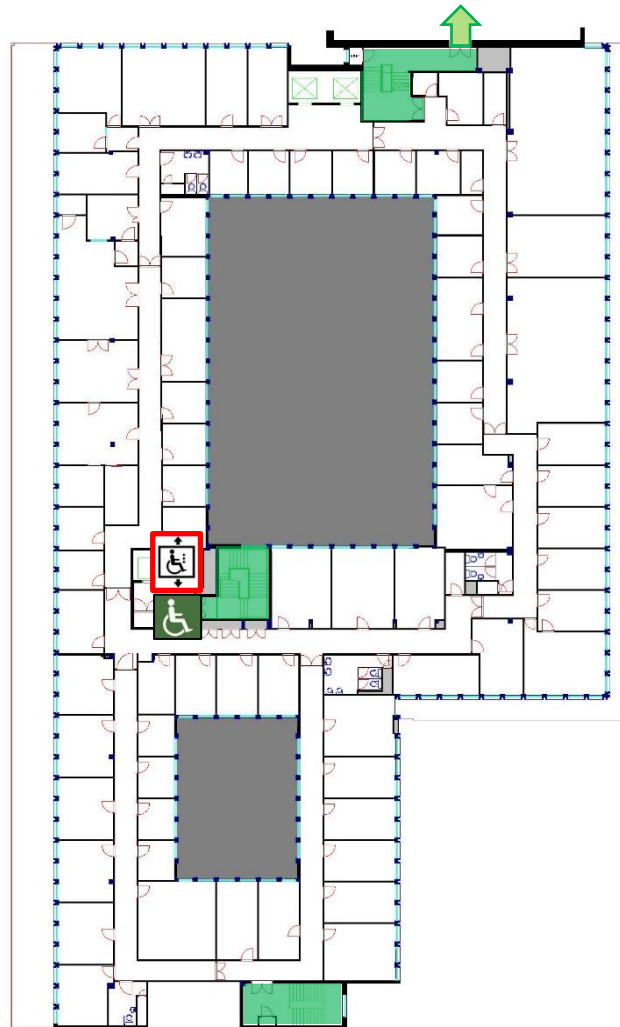
**KEY** ● ● Safe Route     Evac Lift     Refuge Point

**Fire Safety**

**General  
Emergency  
Evacuation  
Plan**

**Huxley  
Building**

**Level: 6M**



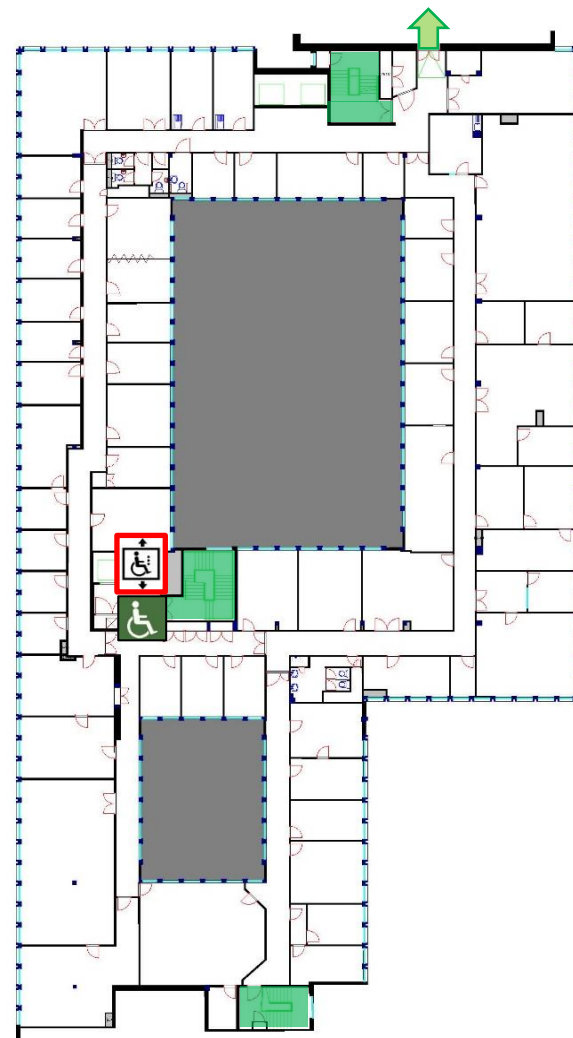
- KEY**
- ● ● Safe Route
  - (with wheelchair icon and red border) Evac Lift
  - (with wheelchair icon) Refuge Point

**Fire Safety**

**General  
Emergency  
Evacuation  
Plan**

**Huxley  
Building**

**Level: 7**



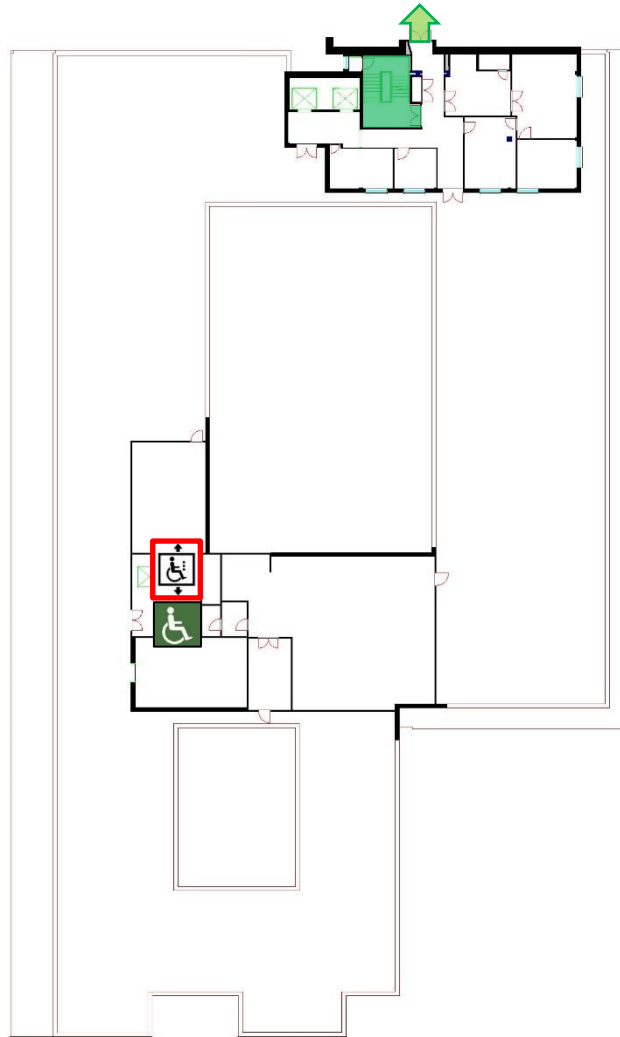
- KEY**
- ● Safe Route
  - □ Evac Lift
  - □ Refuge Point

**Fire Safety**

**General  
Emergency  
Evacuation  
Plan**

**Huxley  
Building**

**Level: 8**



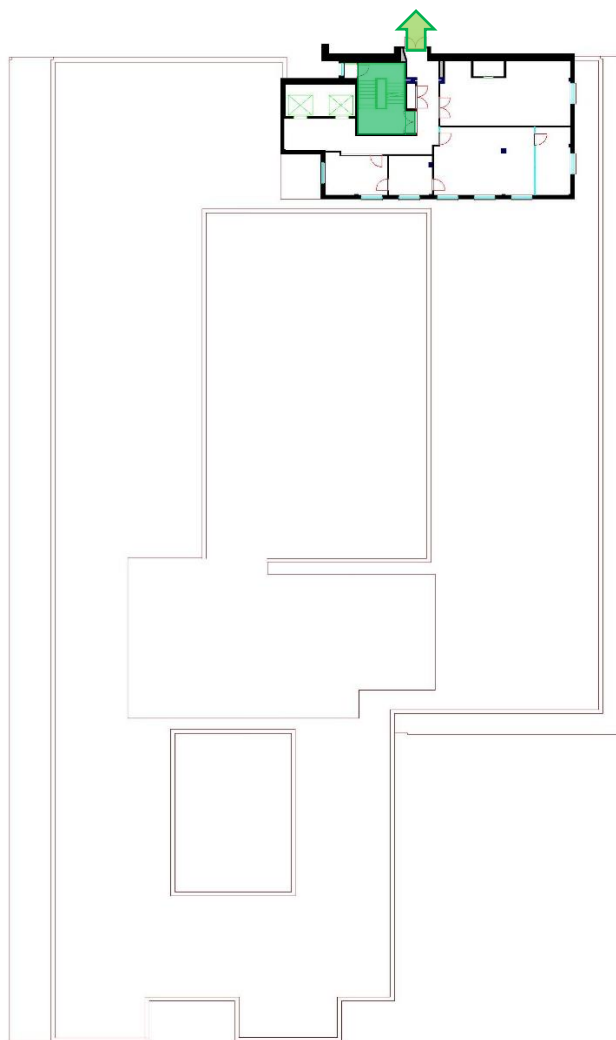
**KEY** ● ●  Safe Route  Evac Lift  Refuge Point

**Fire Safety**

**General  
Emergency  
Evacuation  
Plan**

**Huxley  
Building**

**Level: 9**



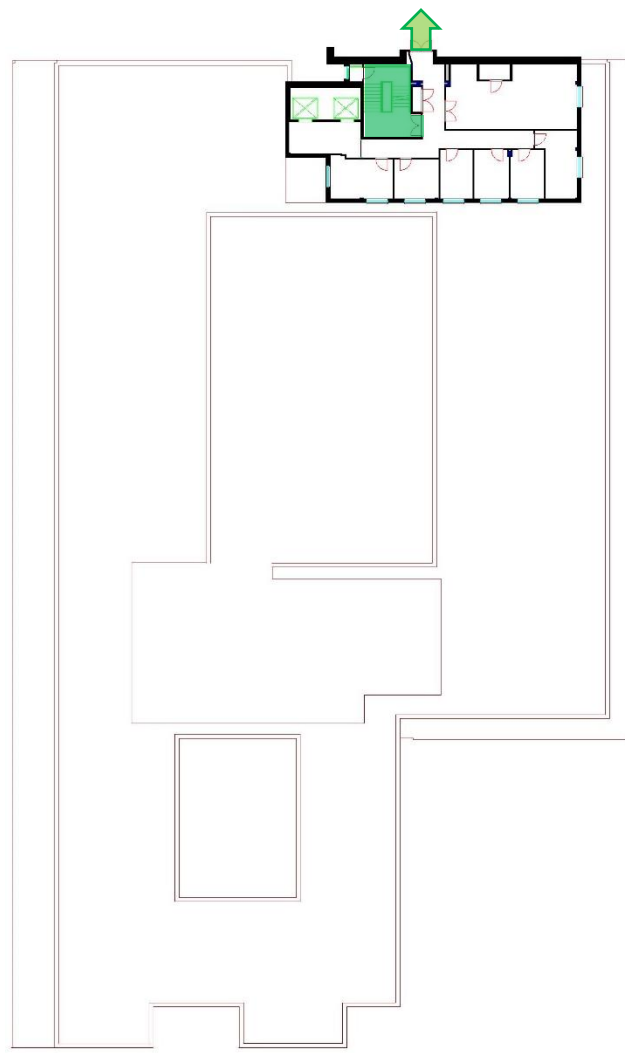
**KEY** ● ●  Safe Route  Evac Lift  Refuge Point

**Fire Safety**

**General  
Emergency  
Evacuation  
Plan**

**Huxley  
Building**

**Level: 10**



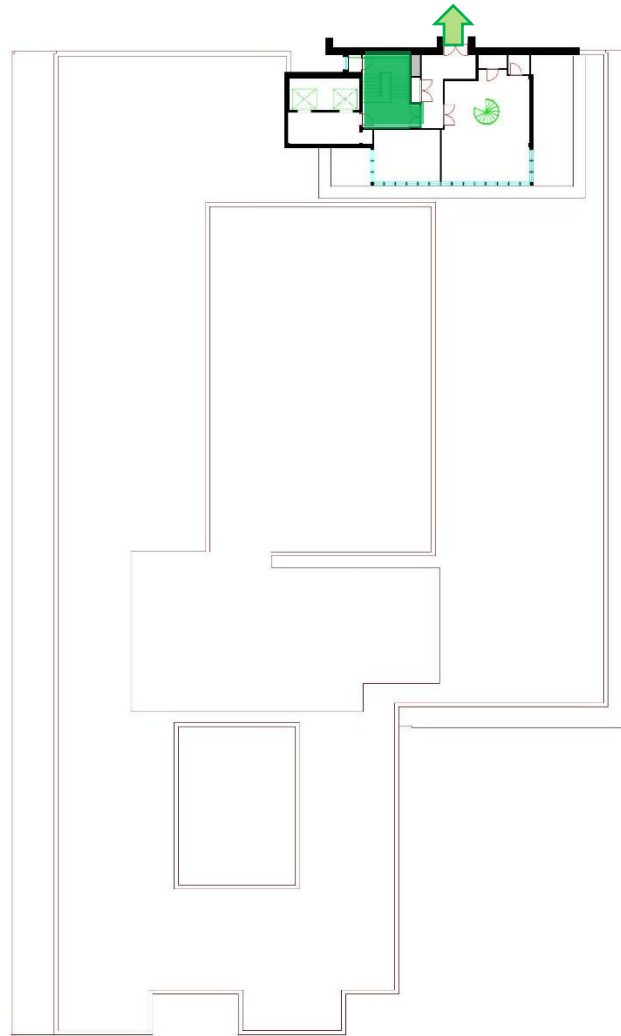
- KEY** ● ●  **Safe Route**  **Evac Lift**  **Refuge Point**

**Fire Safety**

**General  
Emergency  
Evacuation  
Plan**

**Huxley  
Building**

**Level: 11**



**KEY** ● ●  Safe Route  Evac Lift  Refuge Point