

The purpose of a Generic Emergency Evacuation Plan (GEEP) is to enable visitors to the building with restricted mobility or those who may not be able to evacuate unaided to become familiar with the layout, evacuation procedures, available equipment and communication devices. If you feel that this document does not provide you with sufficient information or that you require further assistance, please contact the Imperial College London, Security Team on 020 7594 8910.

The building:

The Dyson building is comprised of 6 floors. All floors are accessible by using the lifts. Emergency evacuation using these lifts is possible during an evacuation. Safe refuge areas are available in both stair cores on all upper floors and provide an EVC System (Emergency Voice Communication System) which links directly to the security control room (see attached floor plan). There are three Fire Exits available from the building on the ground floor, one of which is Disabled Accessible. This is the main entrance (See attached floor plan).

Action required on hearing the Fire Alarm:

If able, you should leave the building immediately by the nearest fire exit (see attached floorplan) and report to the assigned assembly point for the building.

If you are unable to evacuate the building unaided, please proceed to one of the safe refuges located in each stair core (see attached floor plan).

An EVC System (Emergency Voice Communication System) is available in each safe refuge. Use this to contact the security team and notify them of your location, details of which are printed on the front of the panel. Full details on how to use the emergency call point are also provided in the safe refuge. If the EVC System is not working call Security on 020 7589 1000.

Other recommendations:

It is recommended that all visitors to Imperial College London, should familiarise themselves with the fire alarm signals and floor layout of the building they are in. Floor plans and evacuation equipment locations have been provided with this document.

Equipment provided:

There is one Disabled Accessible fire exit available on the ground floor of the building. This is the main entrance (See attached floor plan).

Safe refuge areas with EVC System (Emergency Voice Communication System) are available in each stair core on all floor levels.



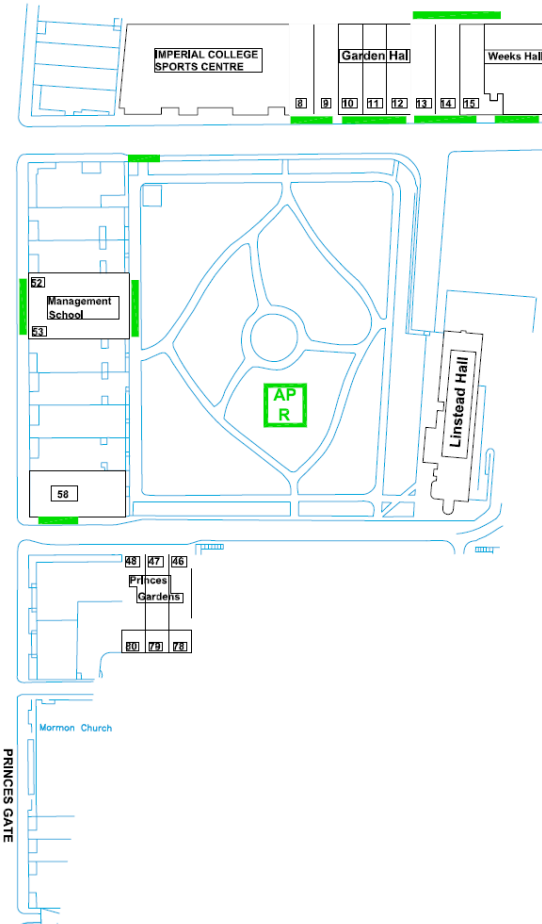
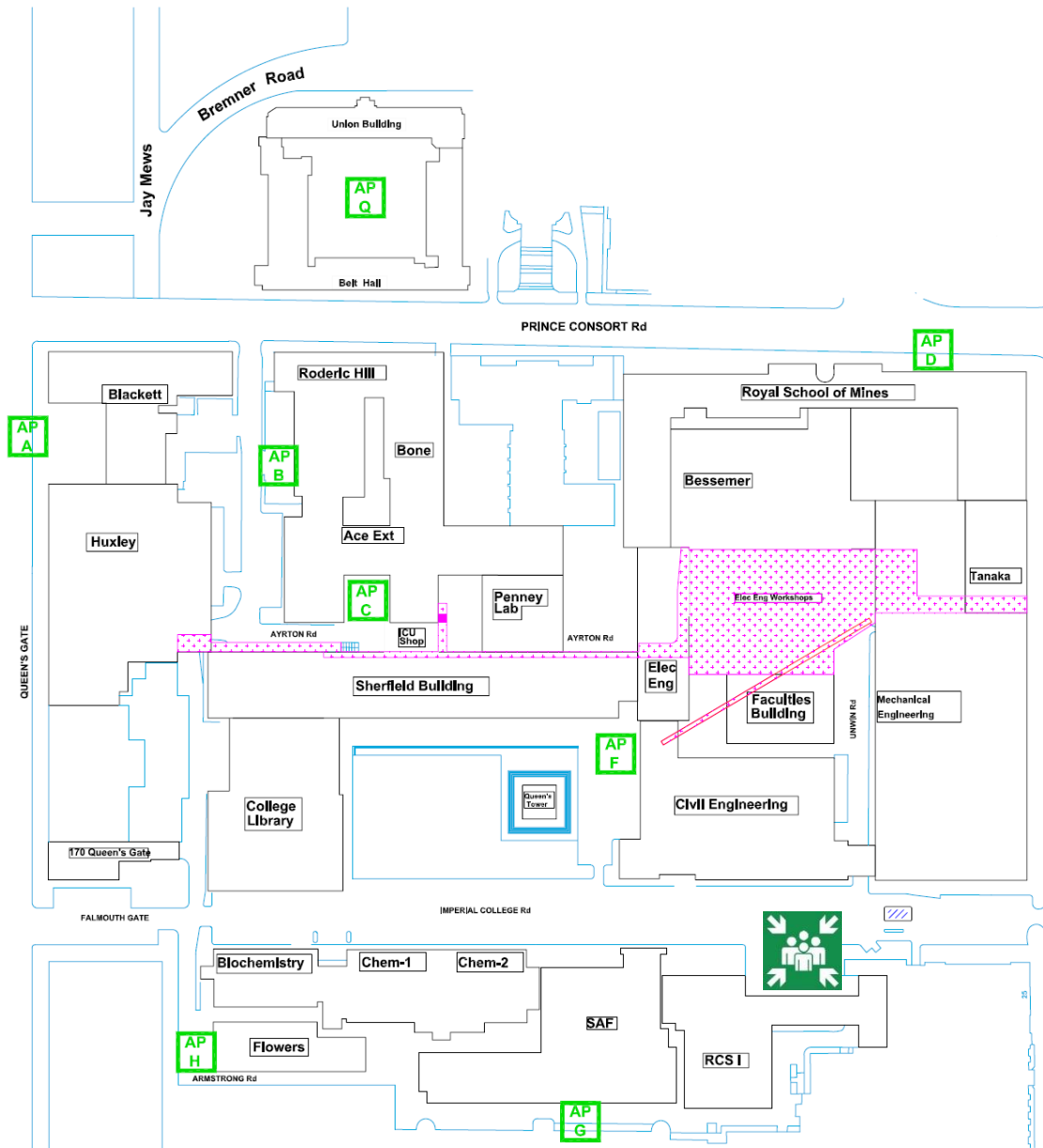
The Deaf Alert system is installed in this building. If you would like access to a Deaf Alert Pager, please contact Imperial College London, Security Team on 020 7594 8910



Fire Safety

General Emergency Evacuation Plan

Assembly Point



KEY ● **AP** Site Assembly Points

F Dyson Building Assembly Point

Fire Safety

**General
Emergency
Evacuation
Plan**

**Dyson
Building**

Level: B



KEY ● ● Safe Route  Evac Lift  Refuge Point

Fire Safety

**General
Emergency
Evacuation
Plan**

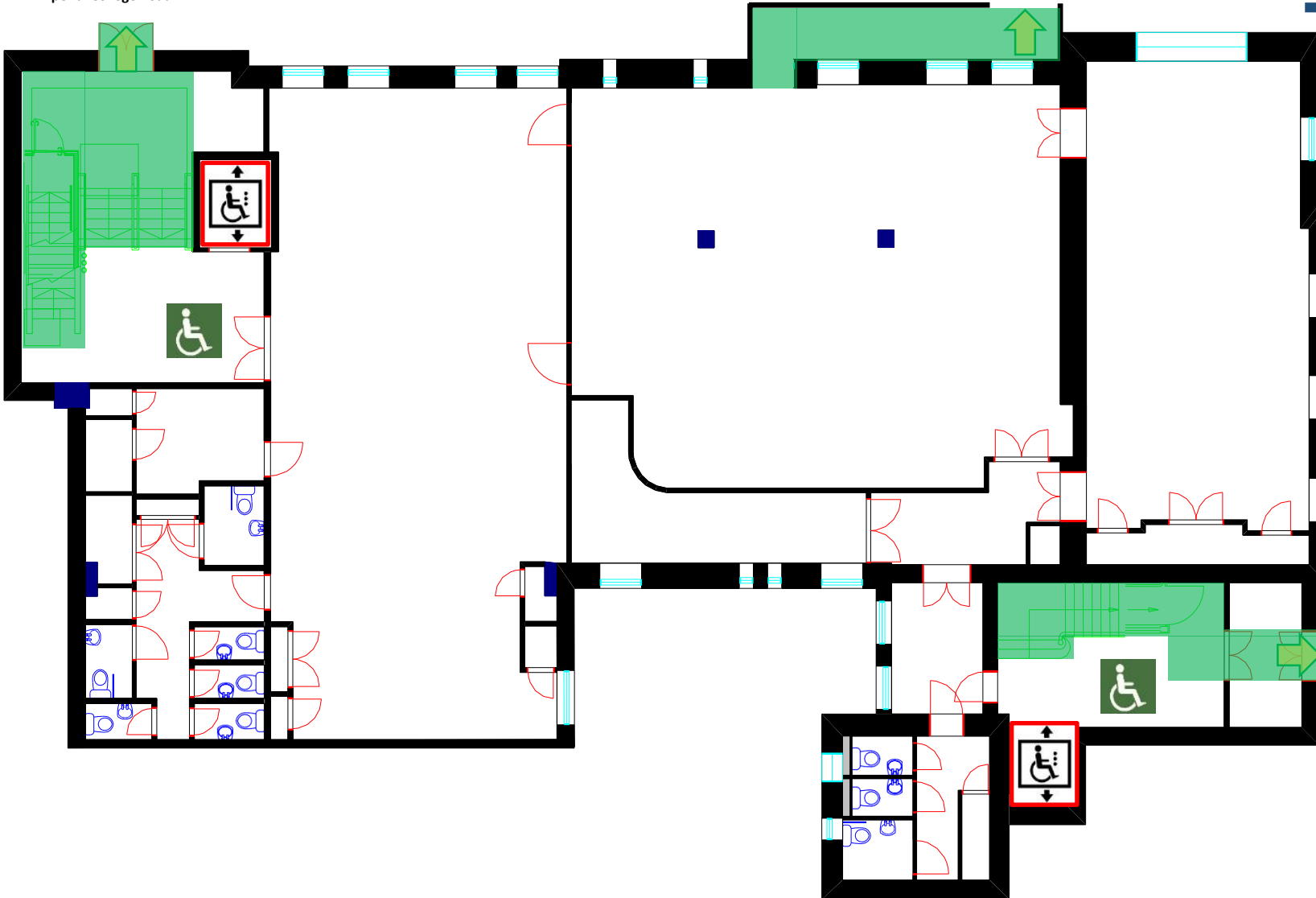
**Dyson
Building**

Level: 0

Imperial College Road

Imperial College Road

Exhibition Road



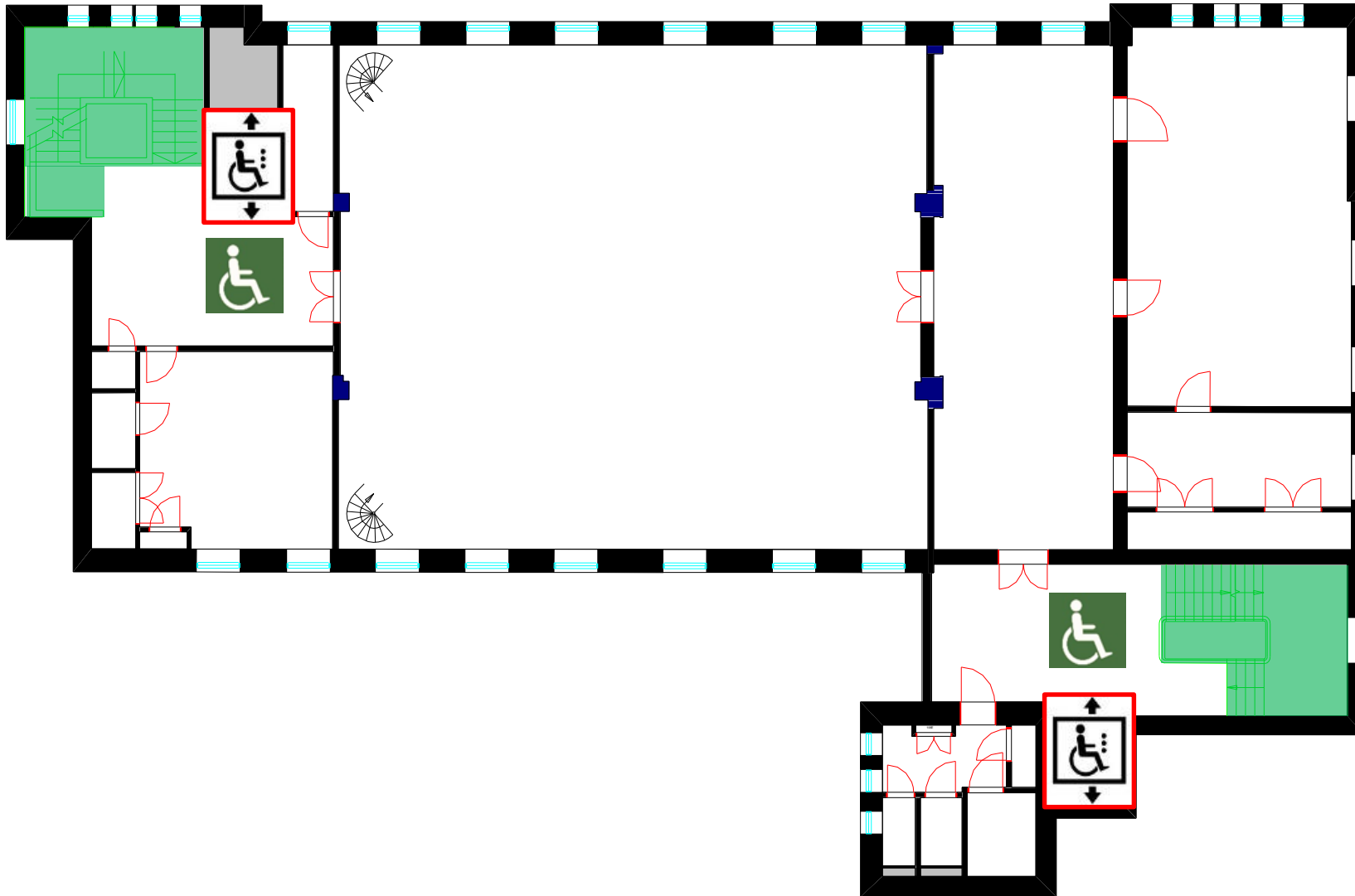
- KEY**
- ● Safe Route
 - 🚪 Evac Lift
 - ♿ Refuge Point

Fire Safety

**General
Emergency
Evacuation
Plan**

**Dyson
Building**

Level: 1



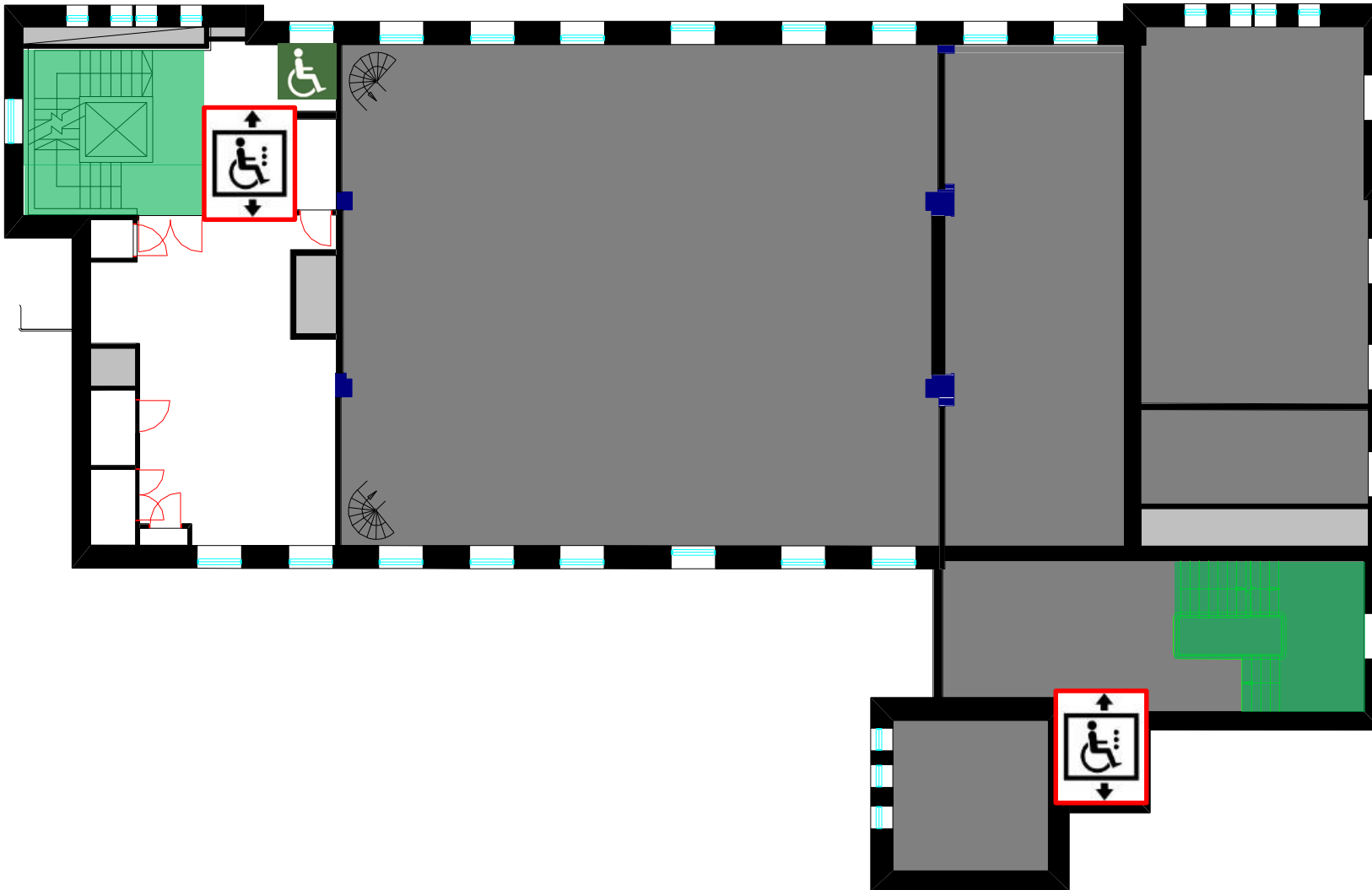
KEY ● ● **Safe Route**  **Evac Lift**  **Refuge Point**

Fire Safety

**General
Emergency
Evacuation
Plan**

**Dyson
Building**

Level: M



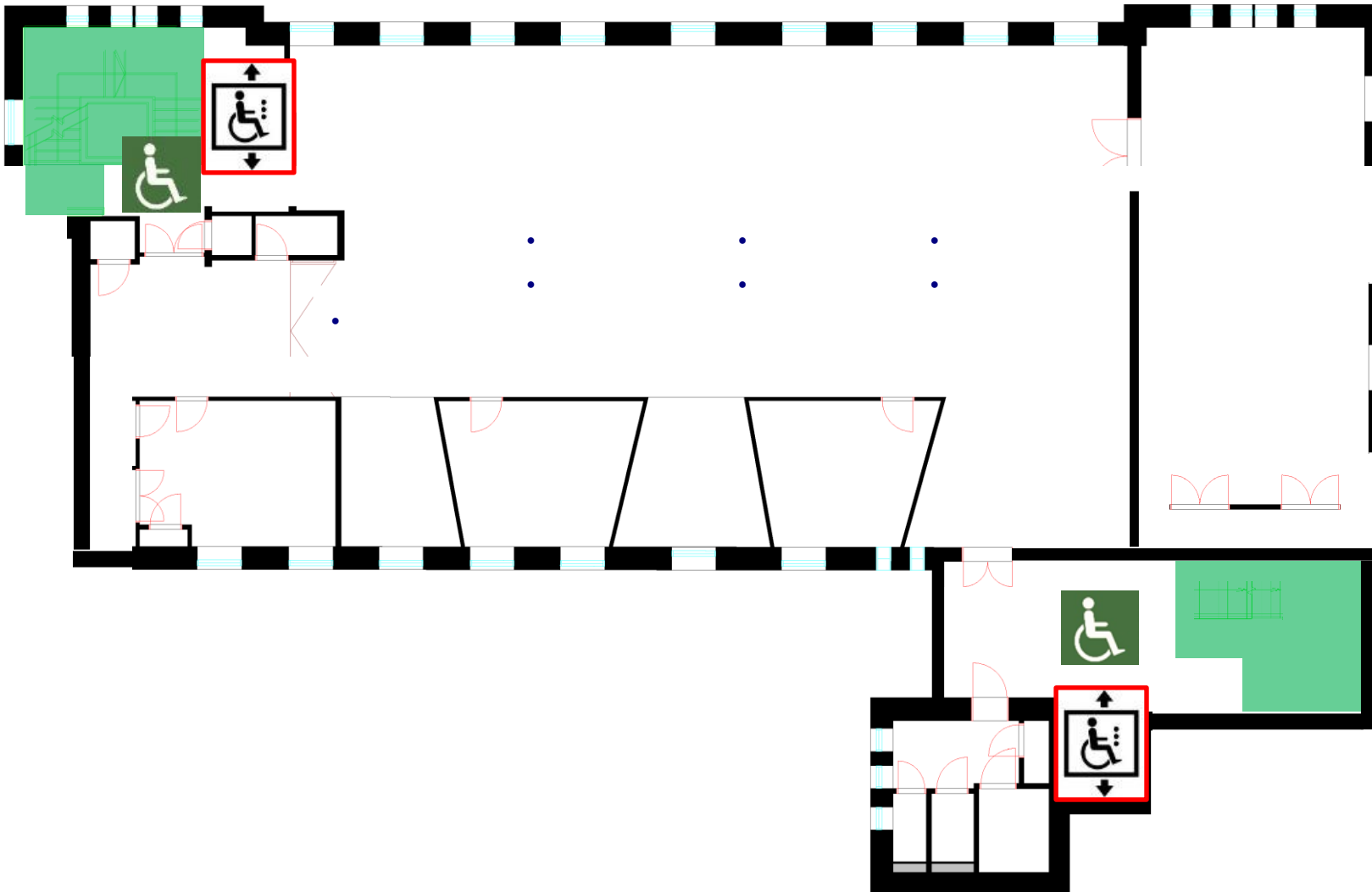
- KEY**
- ● Safe Route
 - ☐ (wheelchair with up/down arrows) Evac Lift
 - ☐ (wheelchair) Refuge Point

Fire Safety

**General
Emergency
Evacuation
Plan**

**Dyson
Building**

Level: 2



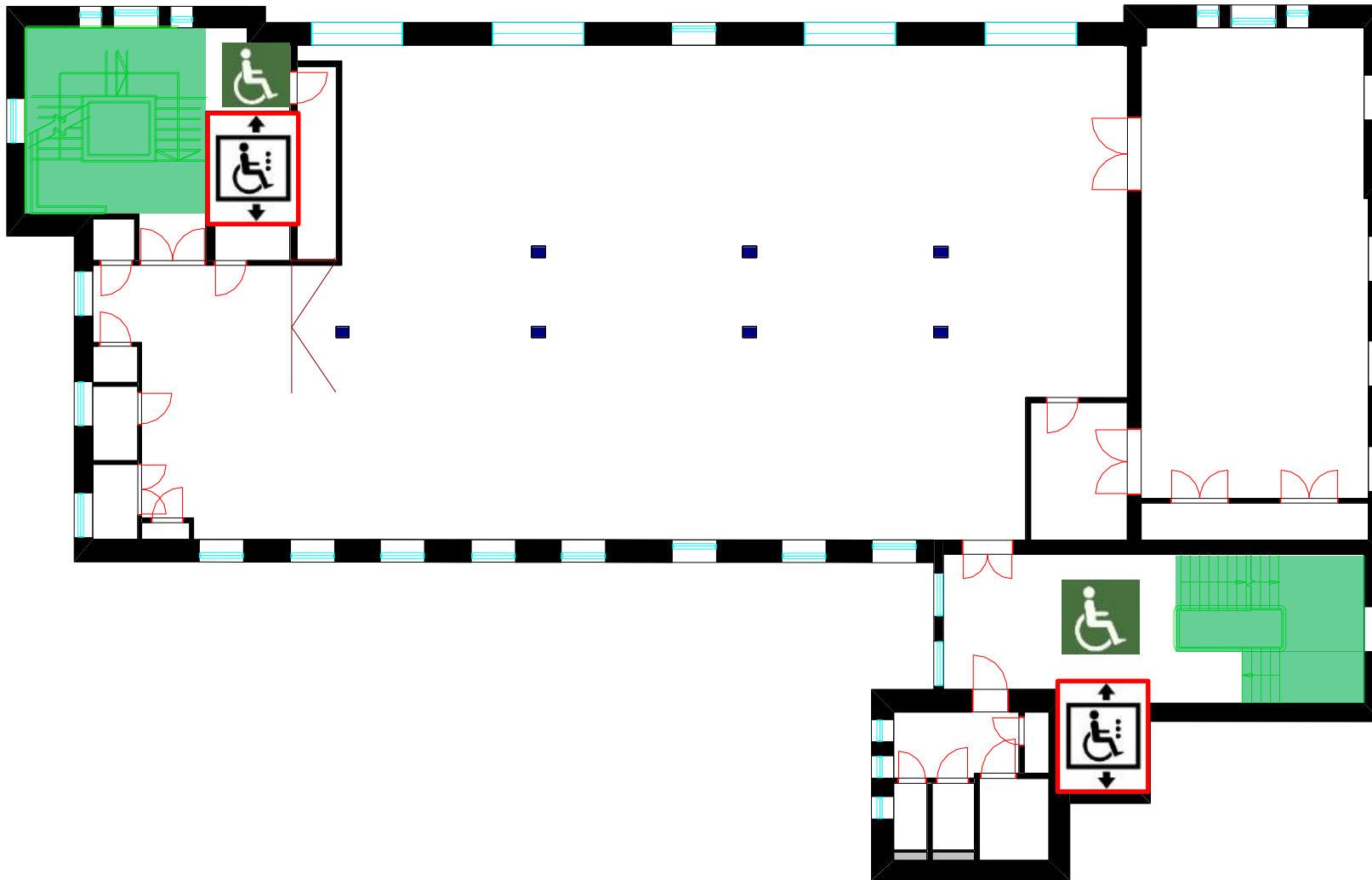
- KEY**
- ● Safe Route
 - (wheelchair icon with arrows) Evac Lift
 - (wheelchair icon) Refuge Point

Fire Safety

**General
Emergency
Evacuation
Plan**

**Dyson
Building**

Level: 3



- KEY**
- ● Safe Route
 - (with wheelchair icon and arrows) Evac Lift
 - (with wheelchair icon) Refuge Point