

The purpose of a Generic Emergency Evacuation Plan (GEEP) is to enable visitors to the building with restricted mobility or those who may not be able to evacuate unaided to become familiar with the layout, evacuation procedures, available equipment and communication devices. If you feel that this document does not provide you with sufficient information or that you require further assistance, please contact the Imperial College London, Security Team on 020 7594 8910.

The building:

The City and Guilds Building is comprised of 9 floors. All floors are accessible by using the lifts. Emergency exit using a lift is available via the North lift (See attached floor plan).

Safe refuge areas are available in all 4 stair cores on all upper floors and provide an EVC System (Emergency Voice Communication System) which links directly to the Security Control Room (see attached floor plan).

There are 11 Fire Exits available from the building on floor 1, 4 of which are Disabled Accessible. There are 2 Fire Exits available on the floor 2, which are Disabled accessible. (See attached floor plan).

Action required on hearing the Fire Alarm:

If able, you should leave the building immediately by the nearest fire exit (see attached floorplan) and report to the assigned assembly point for the building.

If you are unable to evacuate the building unaided, please proceed to one of the safe refuges located in each stair core (see attached floor plan).

An EVC System (Emergency Voice Communication System) is available in each safe refuge. Use this to contact the security team and notify them of your location, details of which are printed on the front of the panel. Full details on how to use the emergency call point are also provided in the safe refuge.

Other recommendations:

It is recommended that all visitors to Imperial College London, should familiarise themselves with the fire alarm signals and floor layout of the building they are in. Floor plans and evacuation equipment locations have been provided with this document.

Equipment provided:

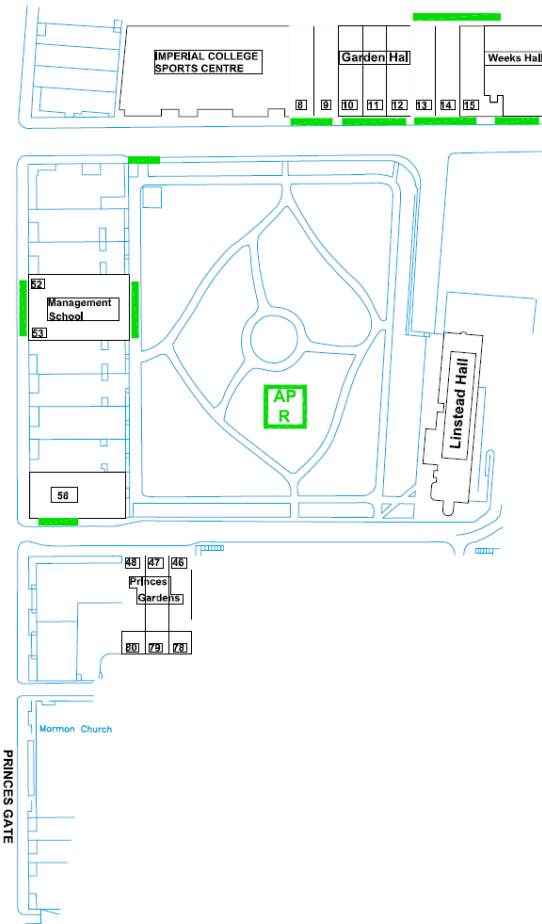
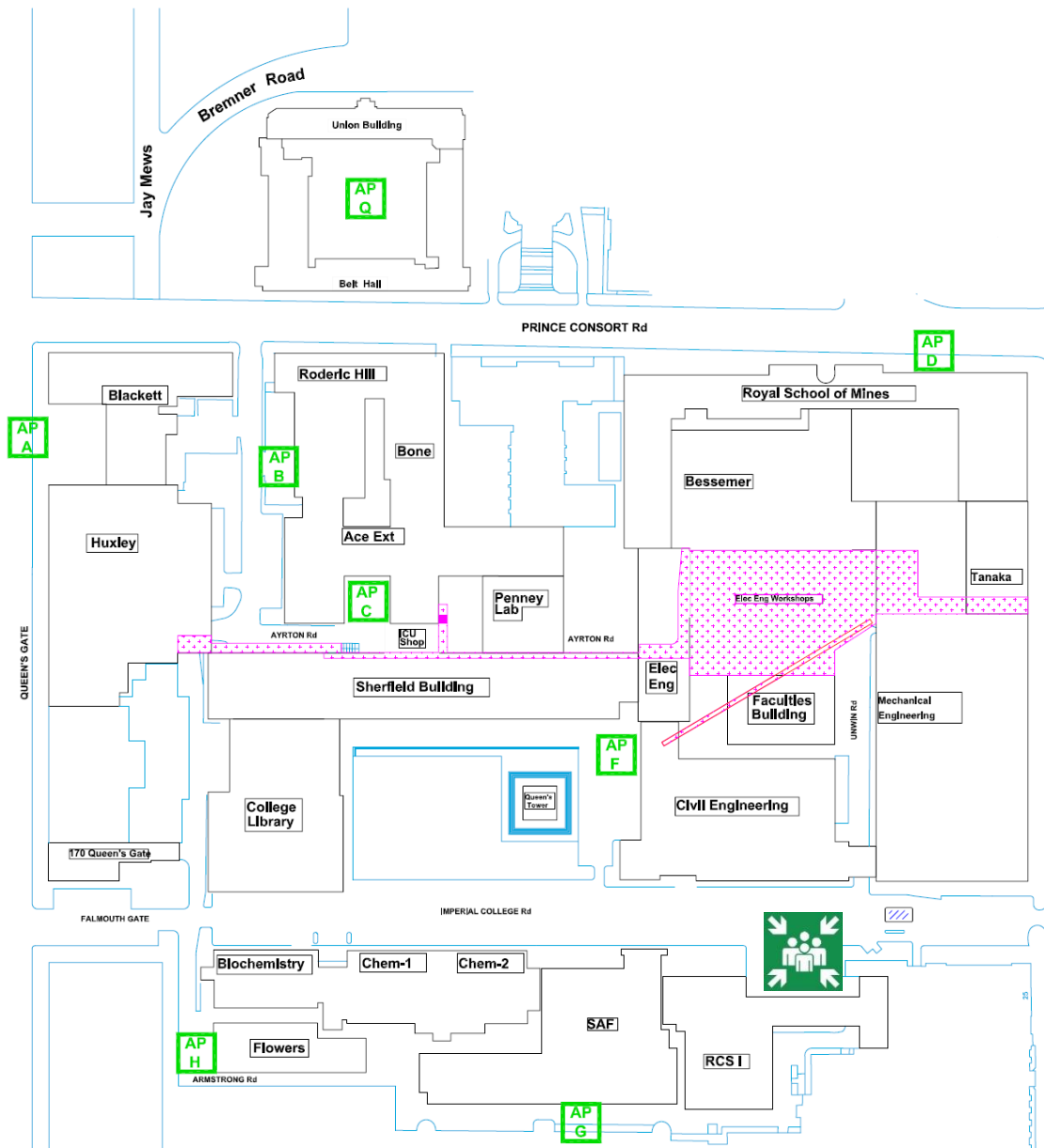
There are 4 Disabled Accessible fire exits available on floor 1 and 2 on floor 2 of the building. (See attached floor plan). Safe refuge areas with EVC System (Emergency Voice Communication System) are available in each stair core on all floor levels.

A vibrating alert system is installed in this building. If you would like access to a pager, please contact Imperial College London, Security Team on 020 7594 8910.

Fire Safety

General Emergency Evacuation Plan

Assembly Point



KEY
● **AP** Site Assembly Points
● **F** Points

 City & Guilds Building
 Assembly Point

Fire Safety

**General
Emergency
Evacuation
Plan**

**City & Guilds
Building**

Level: 0



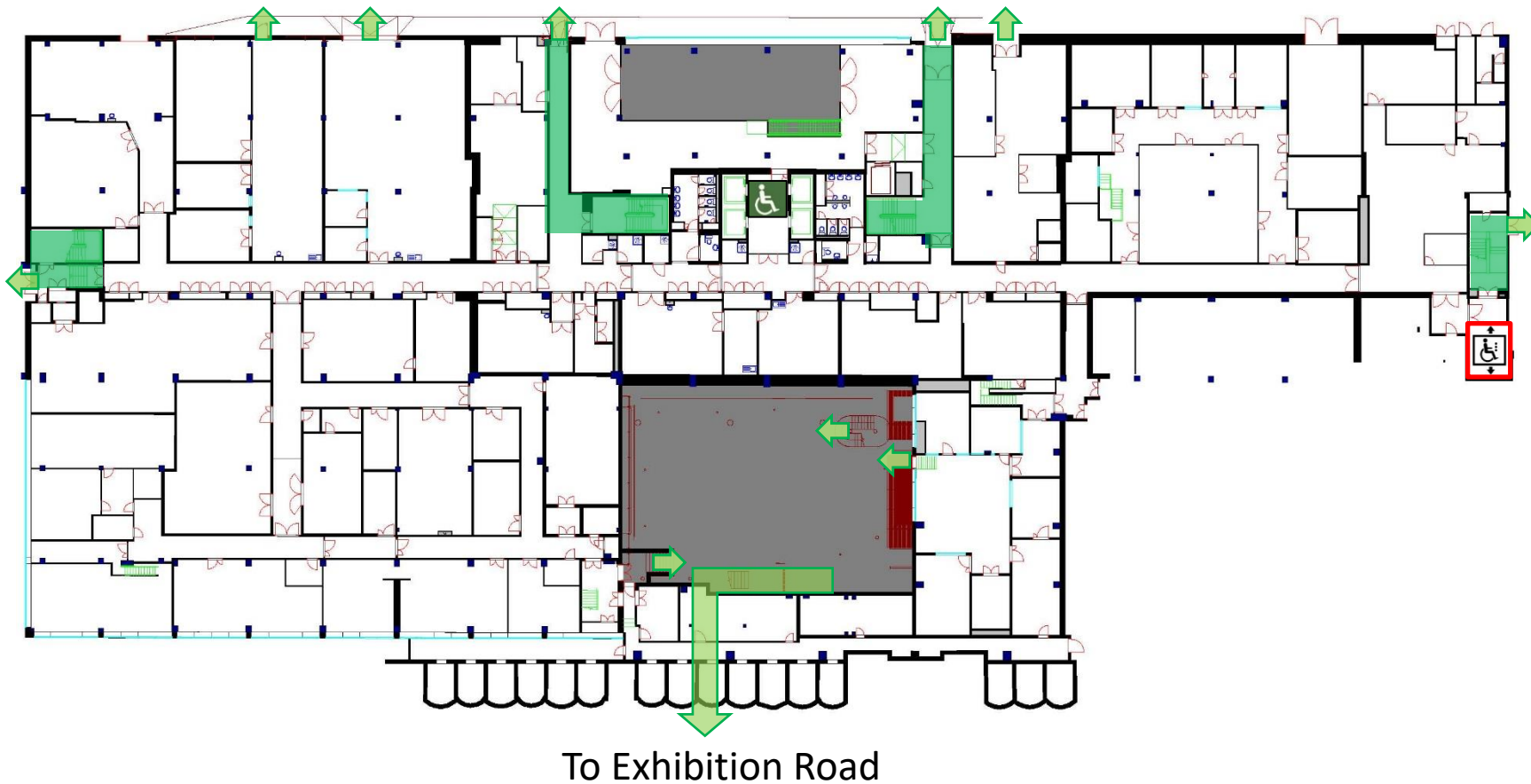
KEY ● ●  Safe Route  Evac Chair  Refuge Point  Evac Lift

Fire Safety

**General
Emergency
Evacuation
Plan**

**City & Guilds
Building**

Level: 1



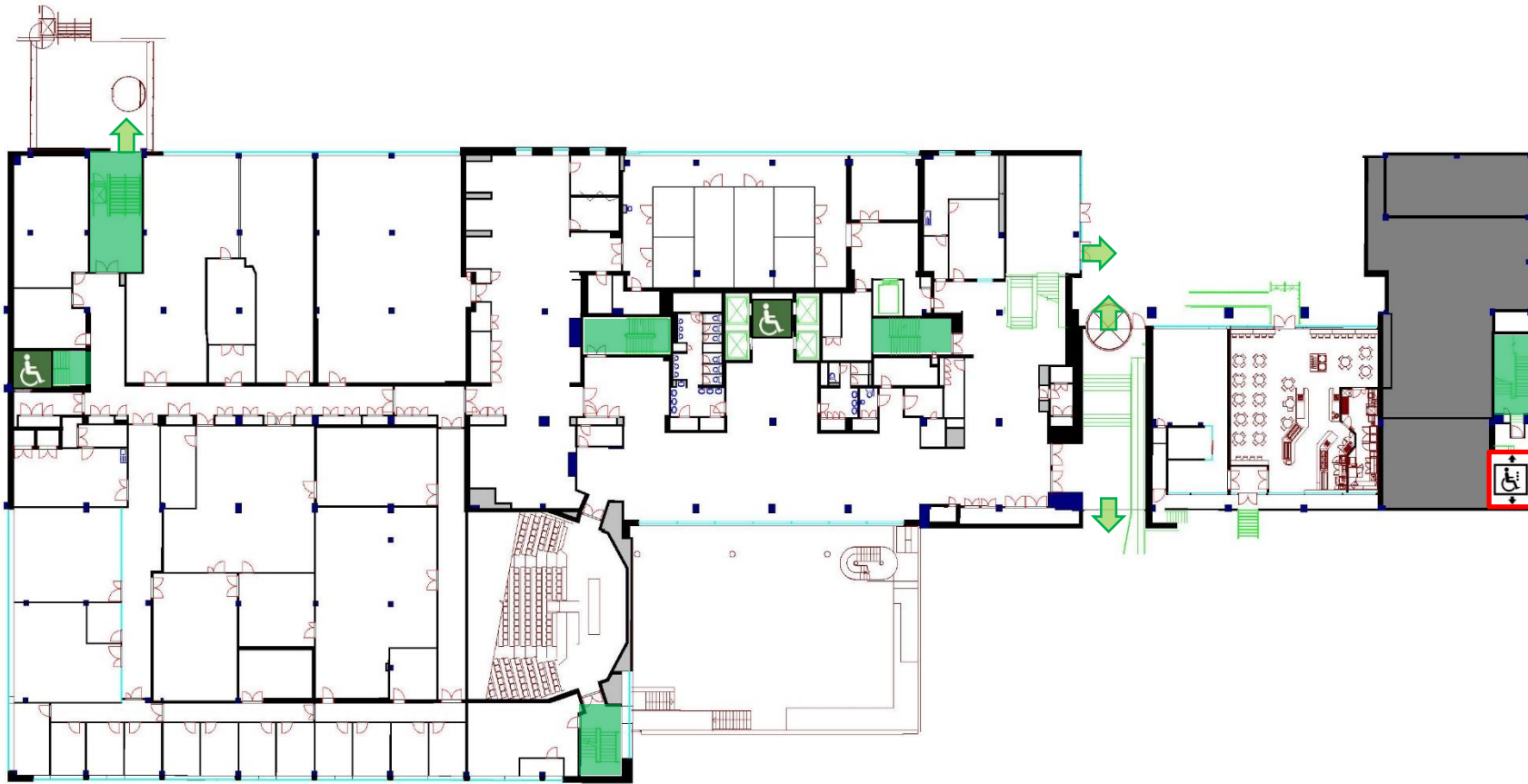
- KEY**
- ● Safe Route
 -  Evac Chair
 -  Refuge Point
 -  Evac Lift

Fire Safety

**General
Emergency
Evacuation
Plan**

**City & Guilds
Building**

Level: 2



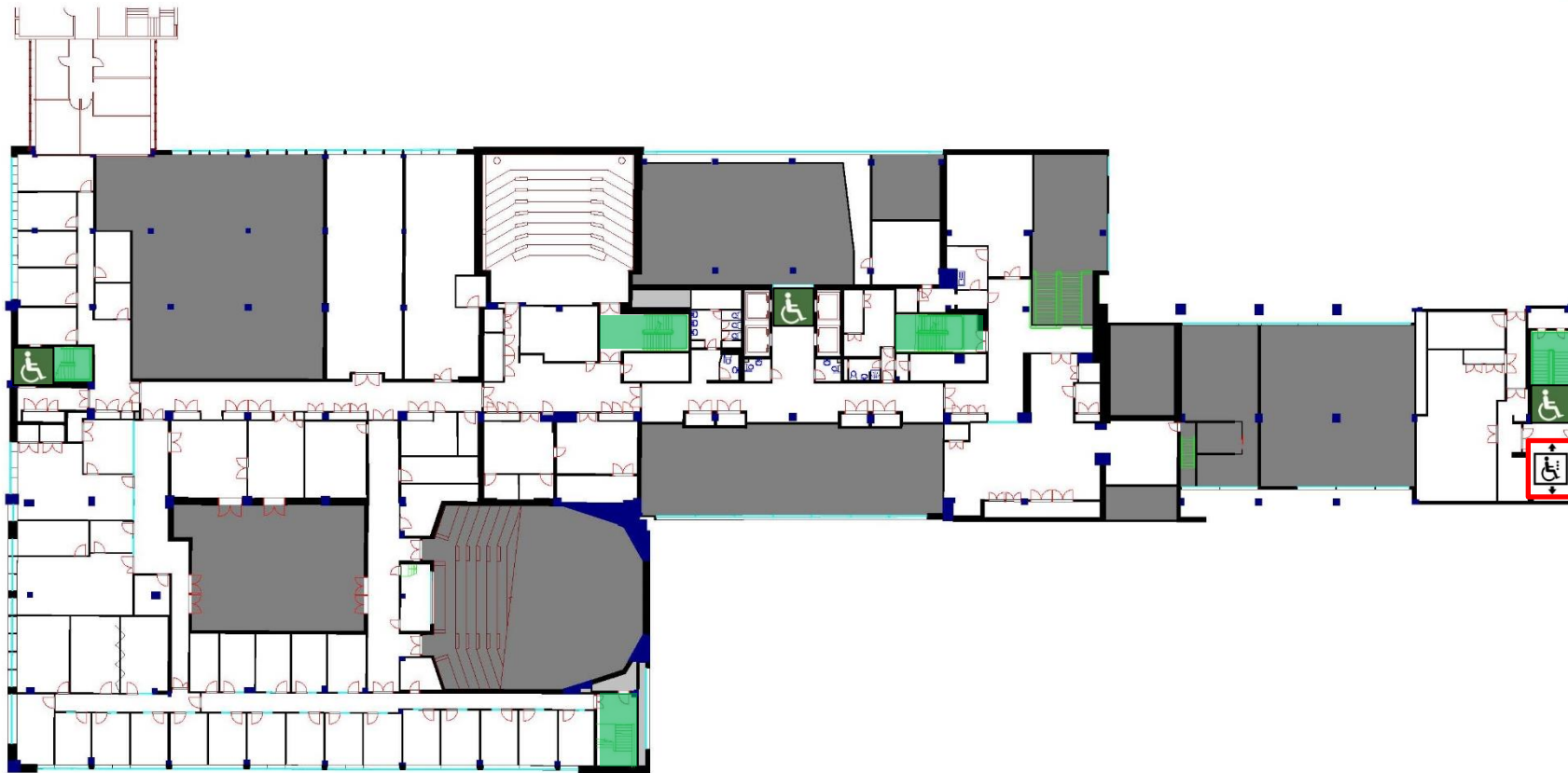
- KEY**
- ●
 -  Safe Route
 -  Evac Chair
 -  Refuge Point
 -  Evac Lift

Fire Safety

**General
Emergency
Evacuation
Plan**

**City & Guilds
Building**

Level: 3



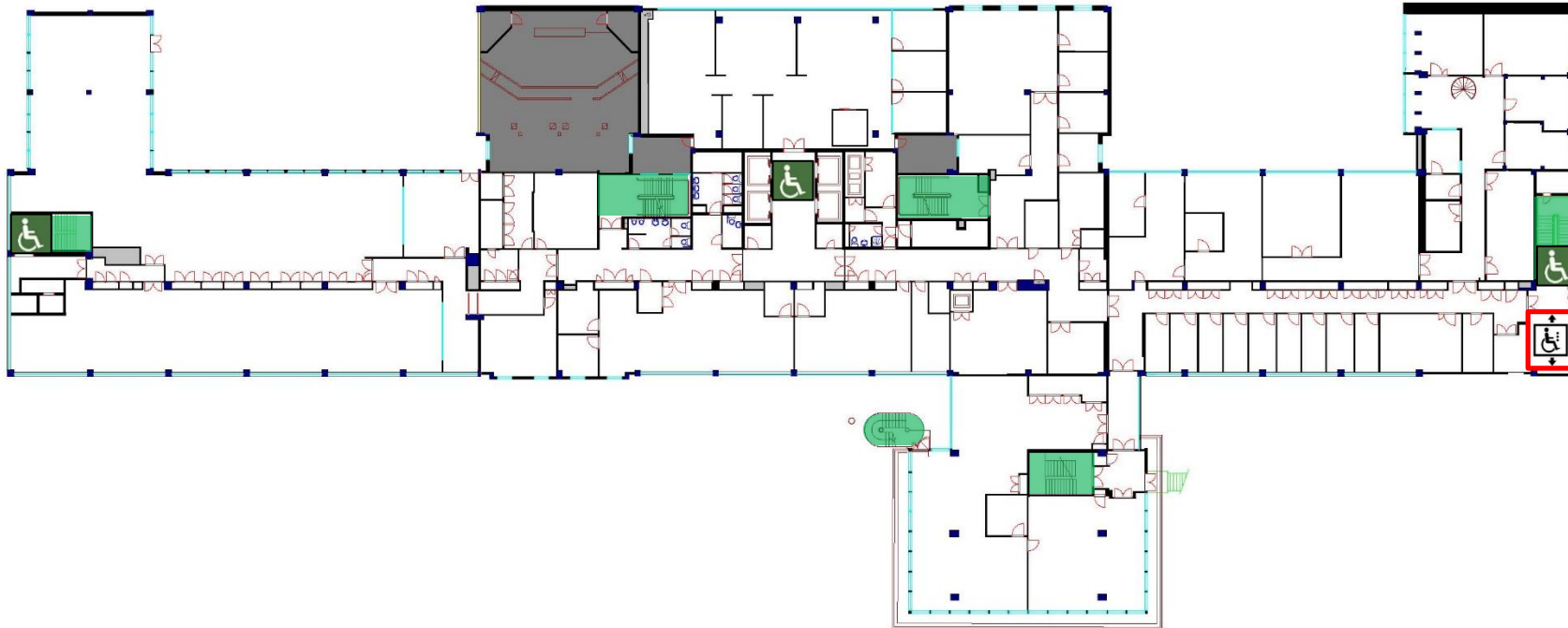
- KEY**
- Safe Route
 -  Evac Chair
 -  Refuge Point
 -  Evac Lift

Fire Safety

**General
Emergency
Evacuation
Plan**

**City & Guilds
Building**

Level: 4



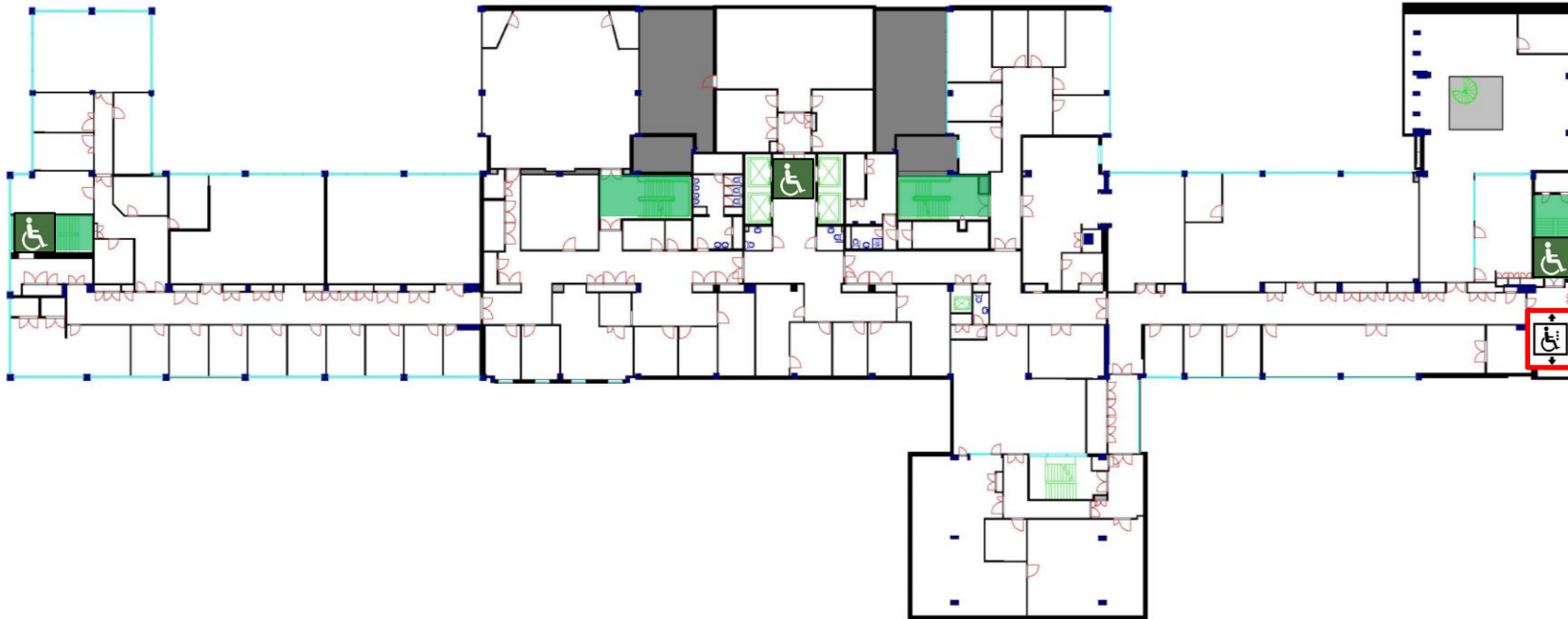
- KEY**
- ● Safe Route
 -  Evac Chair
 -  Refuge Point
 -  Evac Lift

Fire Safety

**General
Emergency
Evacuation
Plan**

**City & Guilds
Building**

Level: 5



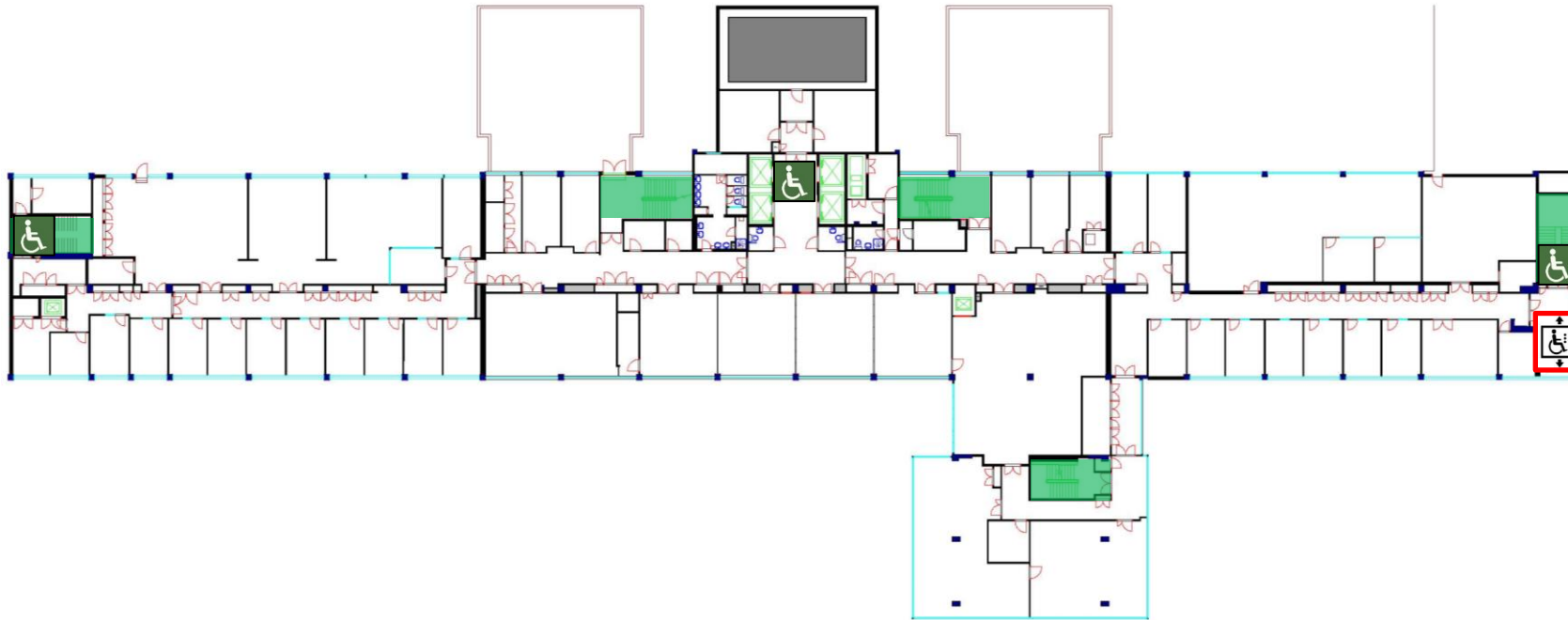
- KEY**
- ● Safe Route
 - Evac Chair
 - Refuge Point
 - Evac Lift

Fire Safety

**General
Emergency
Evacuation
Plan**

**City & Guilds
Building**

Level: 6



- KEY**
- ● Safe Route
 -  Evac Chair
 -  Refuge Point
 -  Evac Lift

Fire Safety

**General
Emergency
Evacuation
Plan**

**City & Guilds
Building**

Level: 7



- KEY**
- ● Safe Route
 -  Evac Chair
 -  Refuge Point
 -  Evac Lift

Fire Safety

**General
Emergency
Evacuation
Plan**

**City & Guilds
Building**

Level: 8



- KEY**
- ● Safe Route
 - Evac Chair
 - Refuge Point
 - Evac Lift