

The purpose of a Generic Emergency Evacuation Plan (GEEP) is to enable visitors to the building with restricted mobility or those who may not be able to evacuate unaided to become familiar with the layout, evacuation procedures, available equipment and communication devices. If you feel that this document does not provide you with sufficient information or that you require further assistance, please contact the Imperial College London, Security Team on 020 7594 8910.

The building:

The Chemistry Building is comprised of 9 floors. All floors are accessible by using the lifts either in the east or central cores of the building or in the Sir Ernst Chain Building Lobby. Emergency egress using the lift in the Sir Ernst Chain Building lobby is possible during an evacuation (see plan). There are two escape stair cores, one at the east end of the building and another in the centre. Safe refuge areas are available in both stair cores on all upper floors.

Action required on hearing the Fire Alarm:

If able, you should leave the building immediately by the nearest fire exit (see attached floorplan) and report to the assigned assembly point for the building.

If you are unable to evacuate the building unaided, please proceed to one of the safe refuges located in each stair core (see attached floor plan) and inform Security of your location on 020 7589 1000.

Other recommendations:

It is recommended that all visitors to Imperial College London, should familiarise themselves with the fire alarm signals and floor layout of the building they are in. Floor plans and evacuation equipment locations have been provided with this document.

Equipment provided:

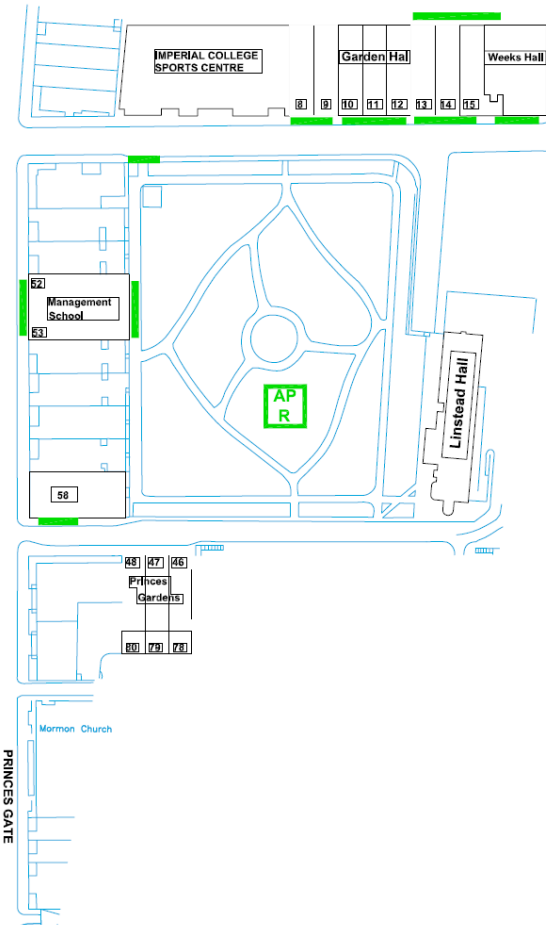
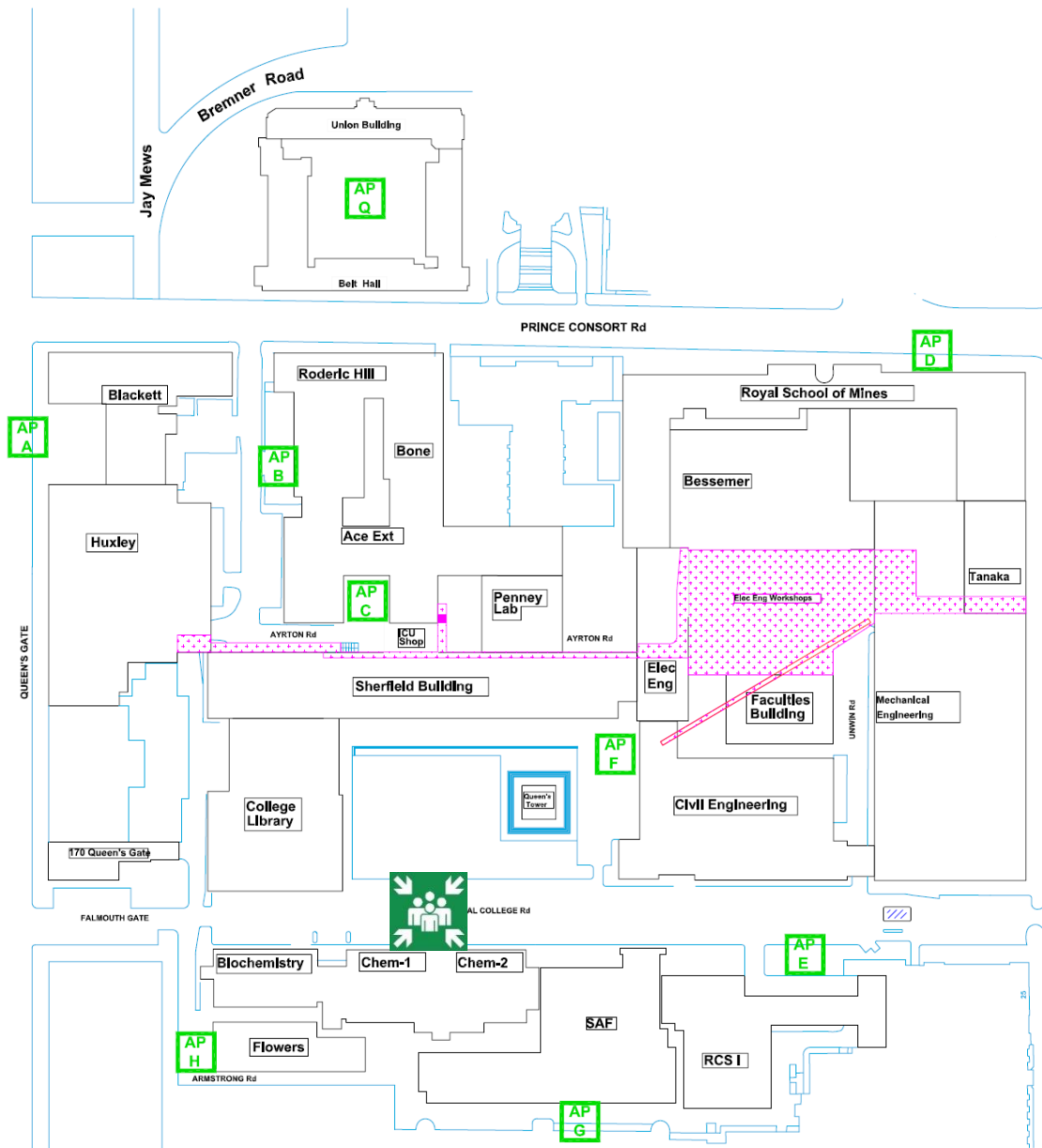
An evacuation lift is available in the Sir Ernst Chain Building Lobby (See attached floor plan).

A vibrating alert system is installed in this building. If you would like access to a pager, please contact Imperial College London, Security Team on 020 7594 8910.

Fire Safety

General
Emergency
Evacuation
Plan

Assembly
Point



KEY
● **AP** Site Assembly Points
● **F** Points

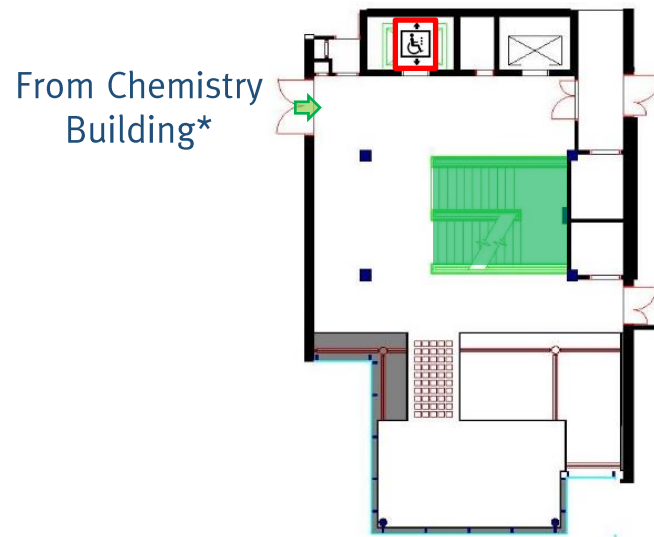
 **Chemistry Building Assembly Point**

Fire Safety

**General
Emergency
Evacuation
Plan**

**Chemistry
Building**

**Sir Ernst Chain
Building Lobby**



From Chemistry
Building*

*Horizontal evacuation on each level to the Sir Ernst Chain Building will allow access to the evacuation lift in the main lobby.

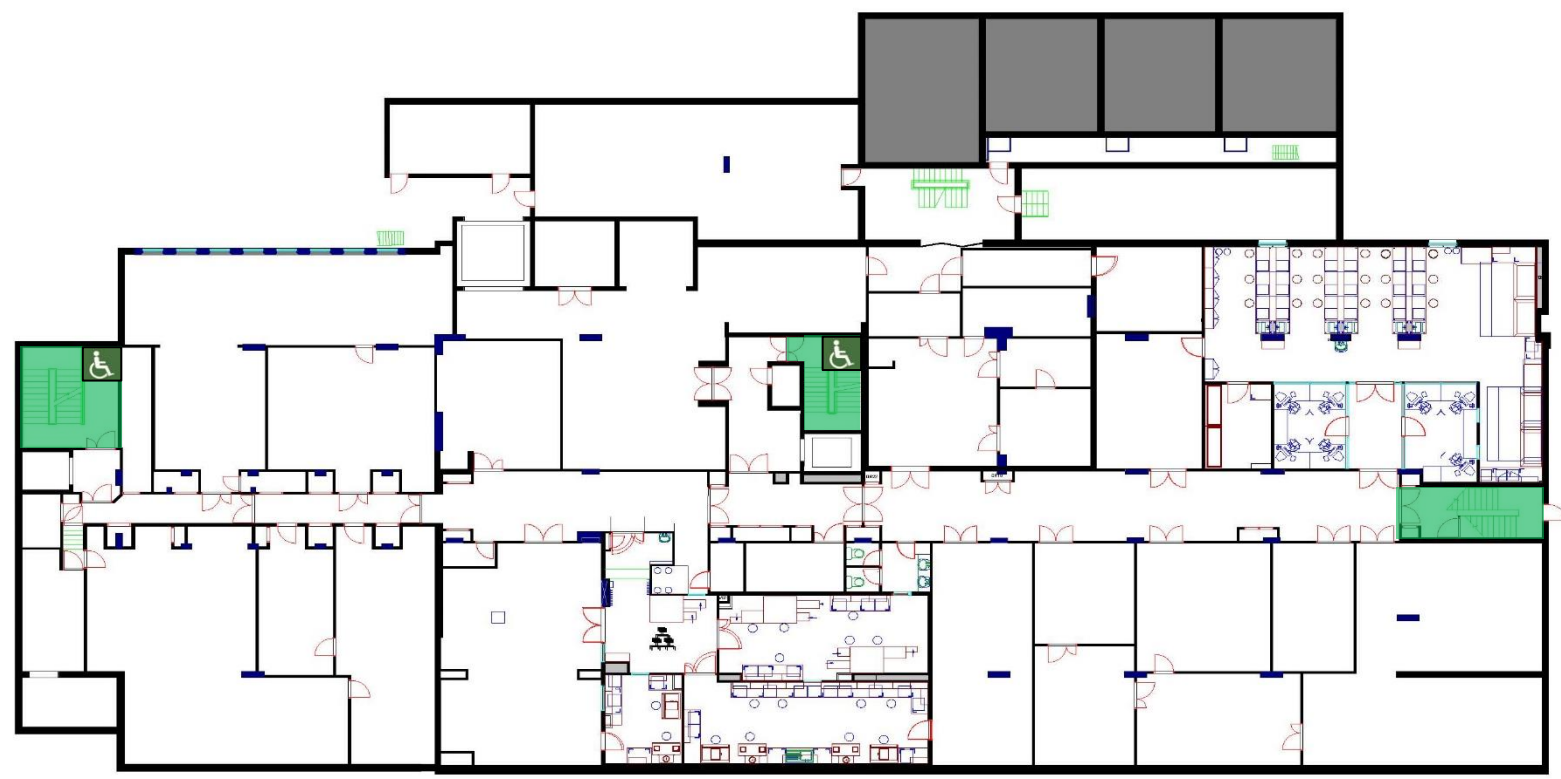
KEY ● ● **Safe Route**  **Evac Lift**

Fire Safety

**General
Emergency
Evacuation
Plan**

**Chemistry
Building**

Level: 0



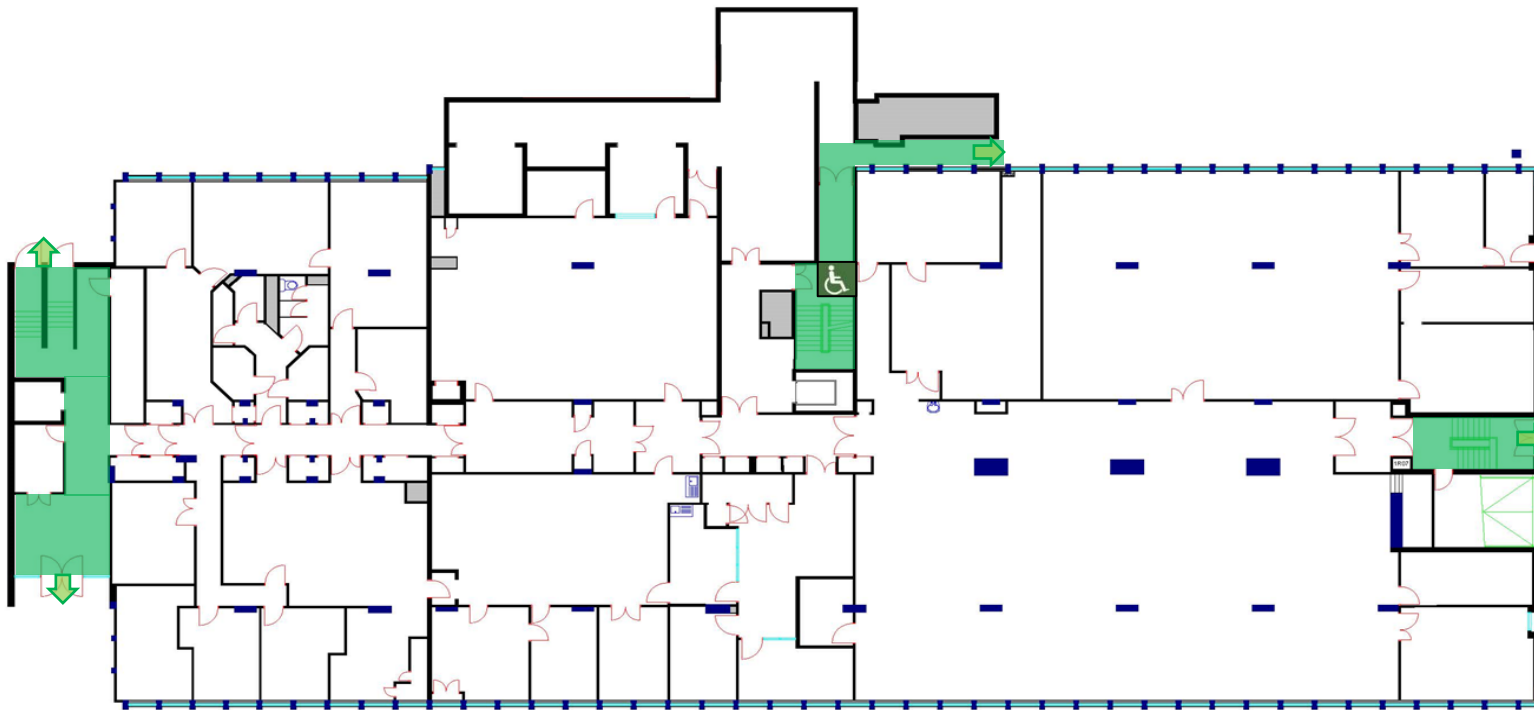
KEY ● ●  Safe Route  Refuge Point

Fire Safety

**General
Emergency
Evacuation
Plan**

**Chemistry
Building**

Level: 1



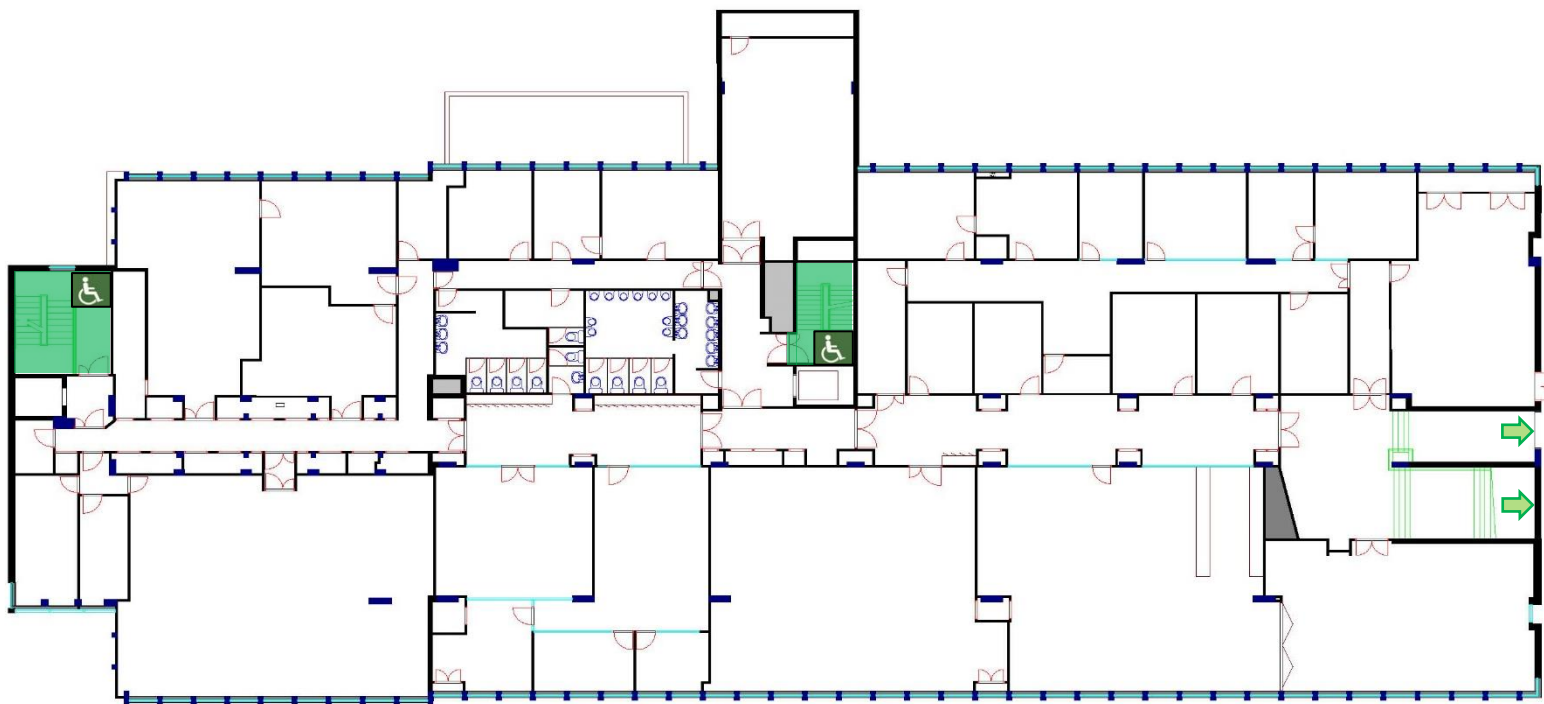
KEY ● ●  Safe Route  Refuge Point

Fire Safety

**General
Emergency
Evacuation
Plan**

**Chemistry
Building**

Level: 2



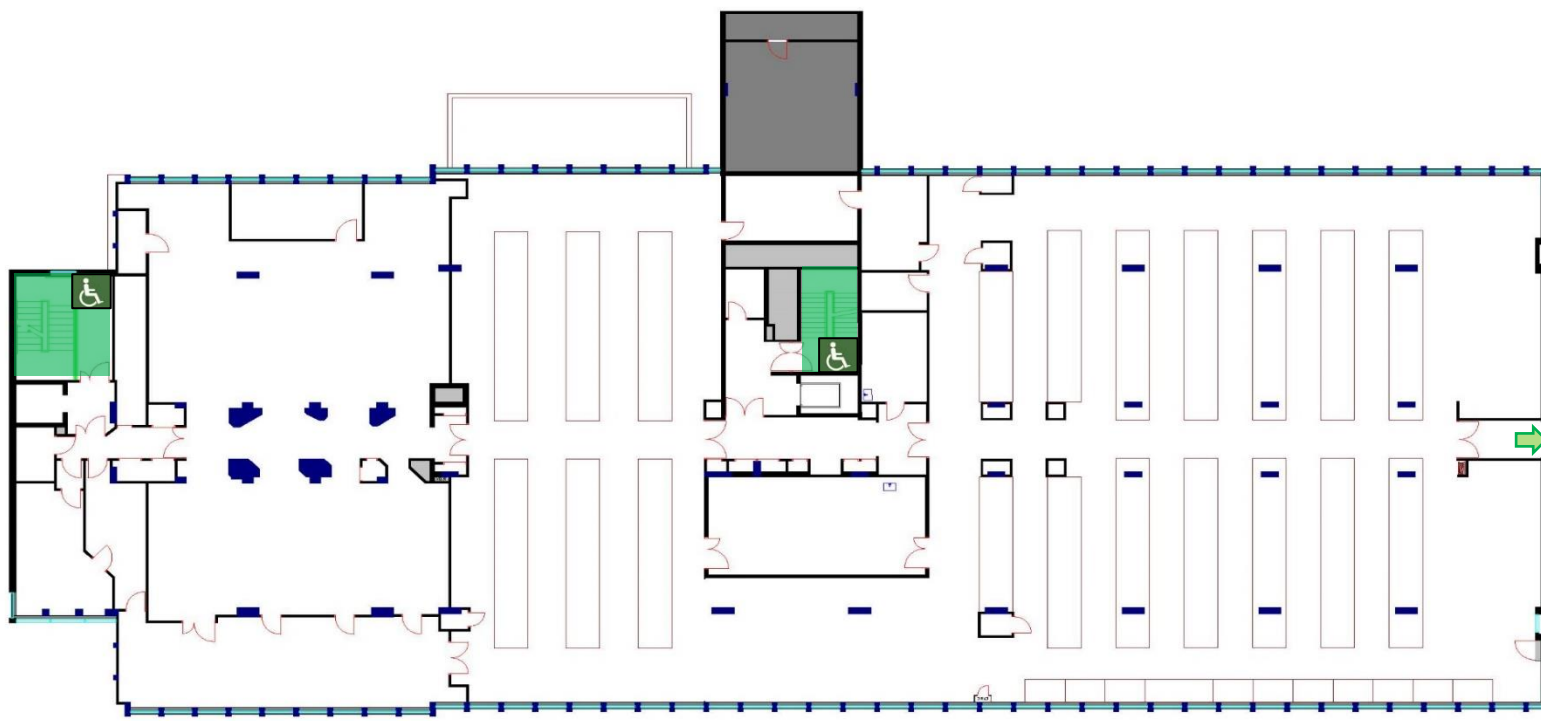
KEY ● ● Safe Route ● Refuge Point

Fire Safety

**General
Emergency
Evacuation
Plan**

**Chemistry
Building**

Level: 3



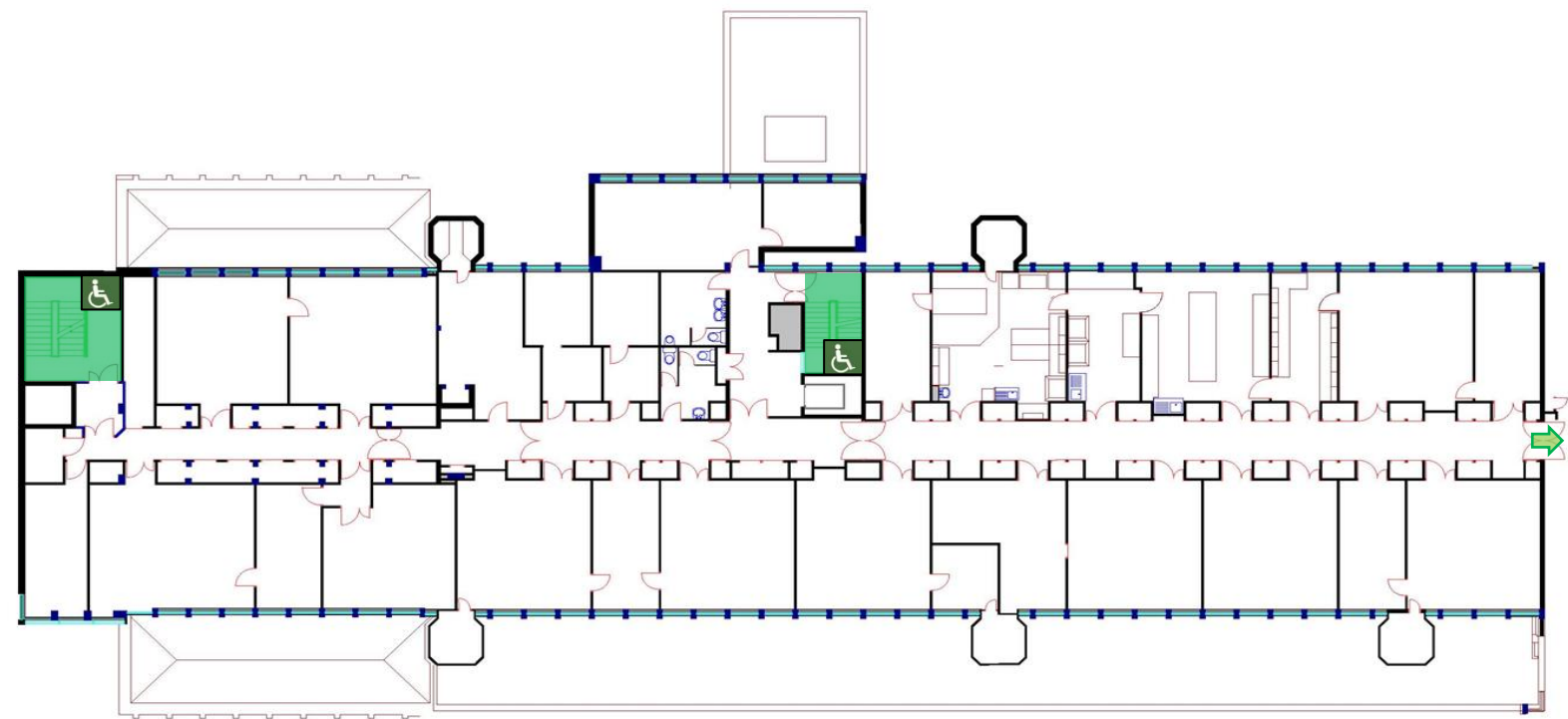
KEY ● ● Safe Route ● ● Refuge Point

Fire Safety

**General
Emergency
Evacuation
Plan**

**Chemistry
Building**

Level: 4



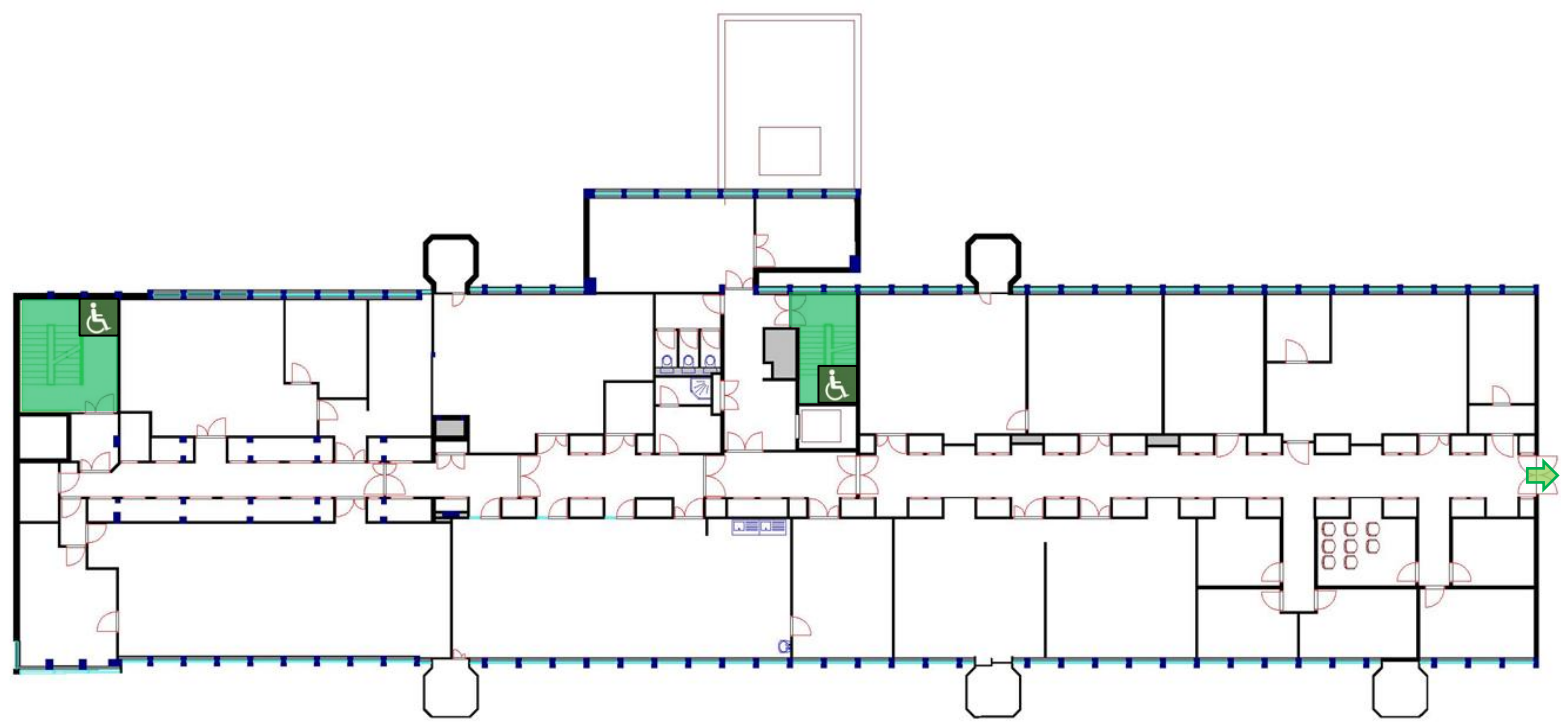
KEY ● ●  Safe Route  Refuge Point

Fire Safety

**General
Emergency
Evacuation
Plan**

**Chemistry
Building**

Level: 5



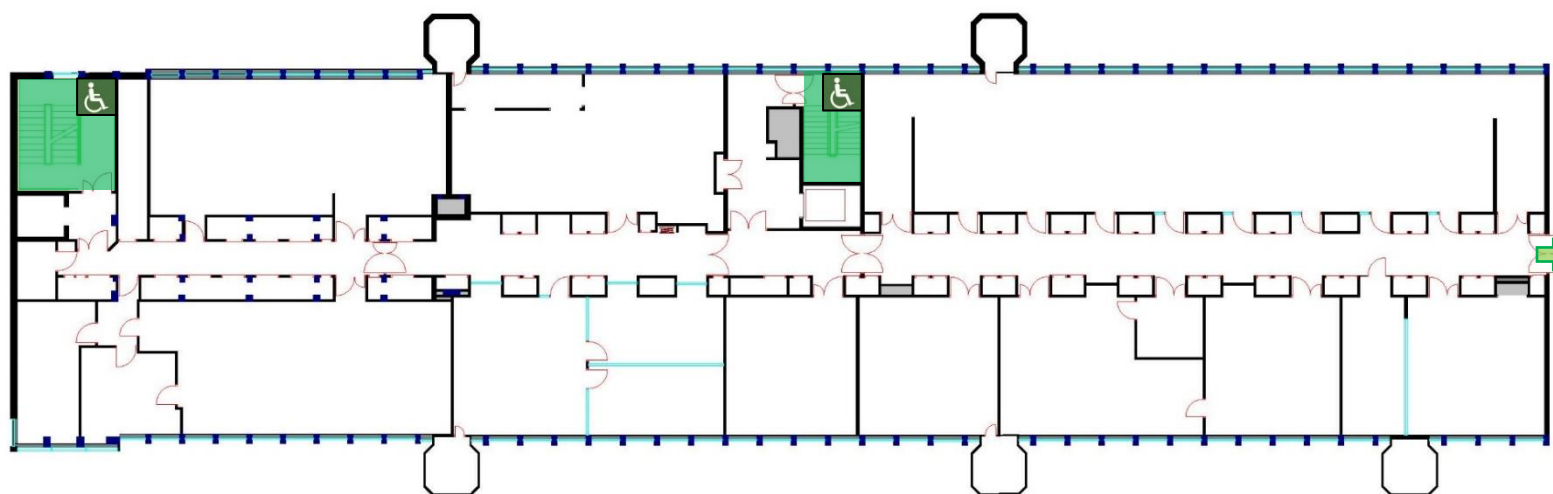
KEY ● ●  Safe Route  Refuge Point

Fire Safety

**General
Emergency
Evacuation
Plan**

**Chemistry
Building**

Level: 6



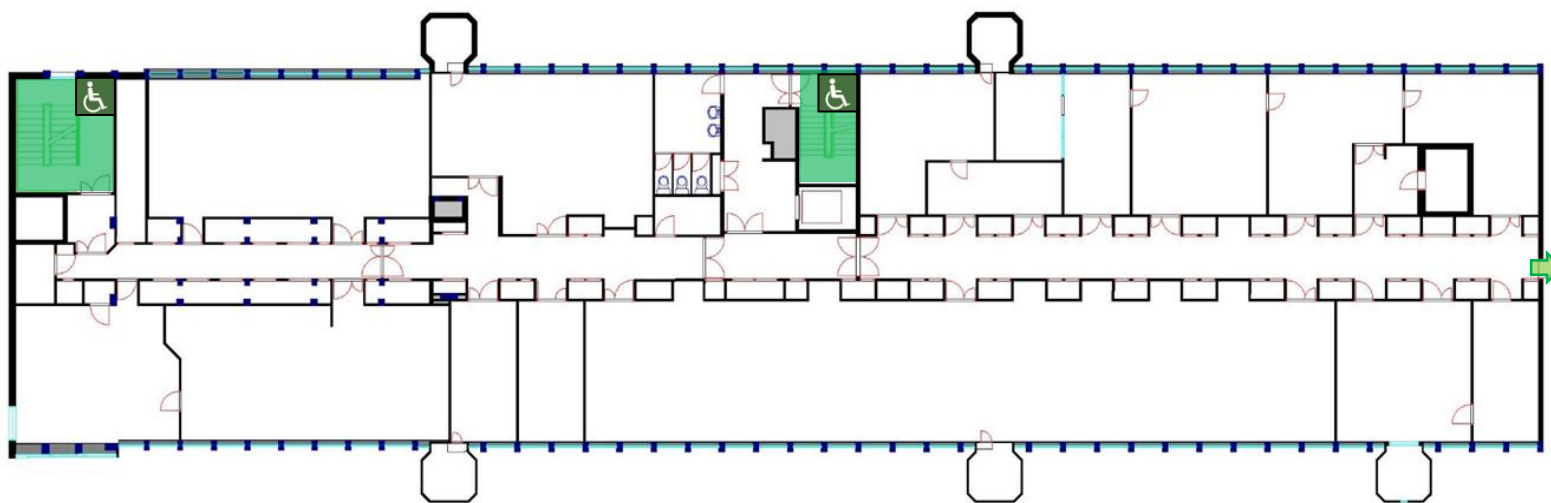
KEY ● ●  Safe Route  Refuge Point

Fire Safety

**General
Emergency
Evacuation
Plan**

**Chemistry
Building**

Level: 7



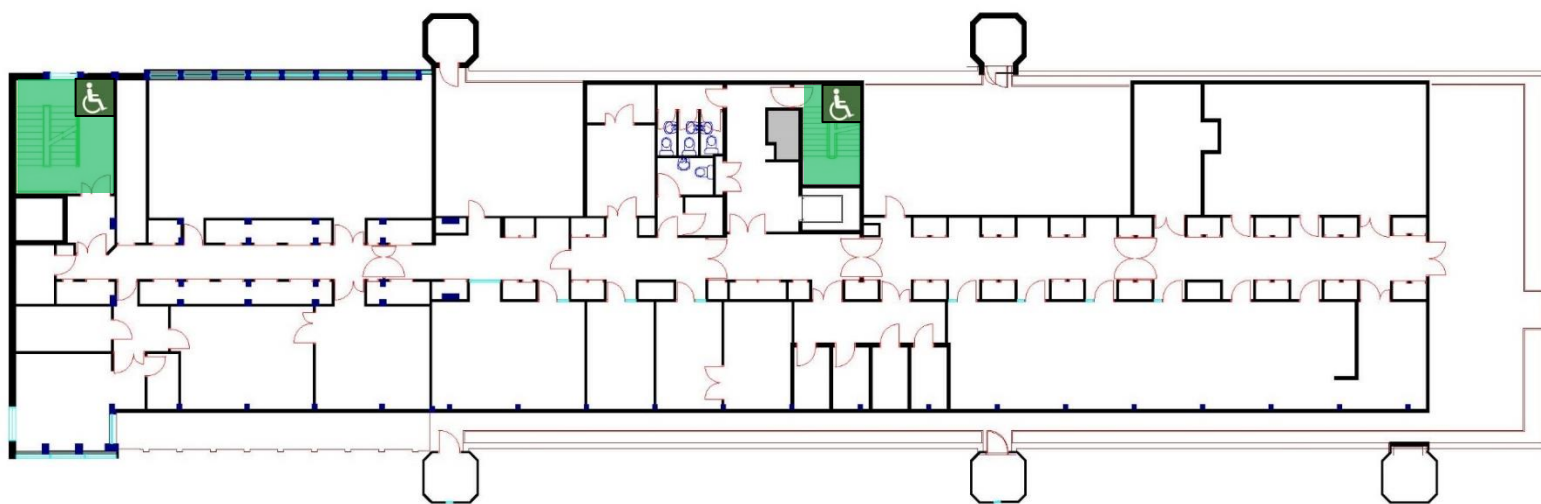
KEY ● ●  Safe Route  Refuge Point

Fire Safety

**General
Emergency
Evacuation
Plan**

**Chemistry
Building**

Level: 8



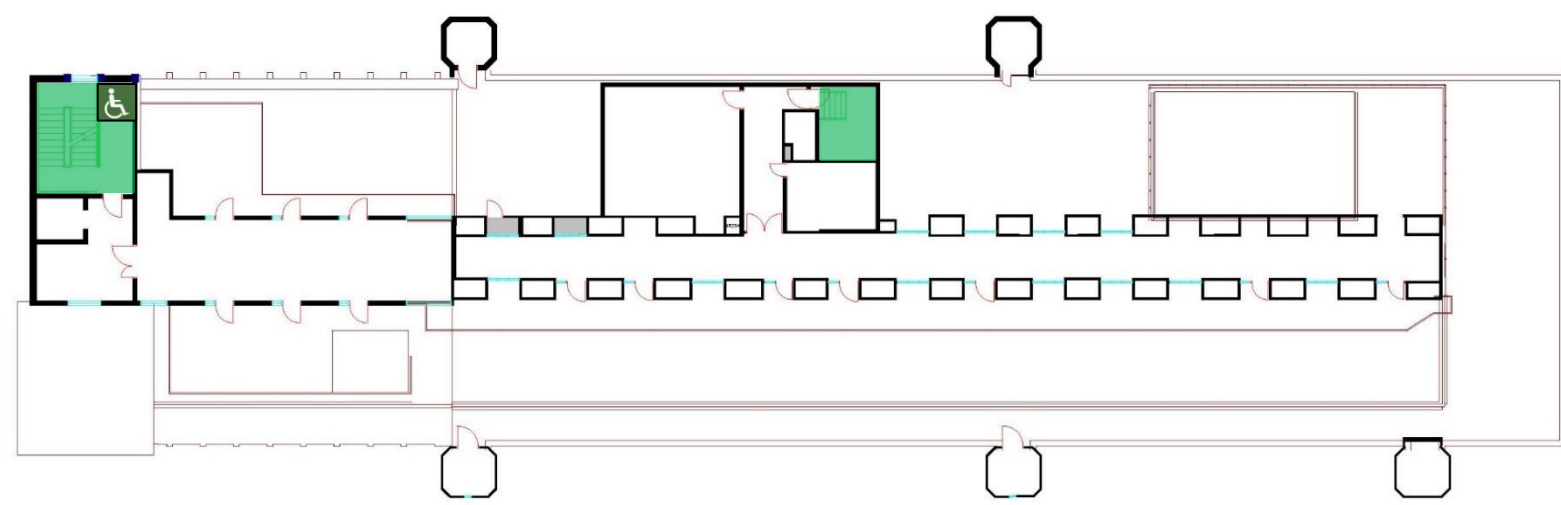
KEY ● ●  Safe Route  Refuge Point

Fire Safety

**General
Emergency
Evacuation
Plan**

**Chemistry
Building**

Level: 9



KEY ● ● **Safe Route**  **Refuge Point**