

The purpose of a Generic Emergency Evacuation Plan (GEEP) is to enable visitors to the building with restricted mobility or those who may not be able to evacuate unaided to become familiar with the layout, evacuation procedures, available equipment and communication devices. If you feel that this document does not provide you with sufficient information or that you require further assistance, please contact the Imperial College London, Security Team on 020 7594 8910.

### The building:

The Beit Quadrangle is comprised of 6 floors. The north wing of the building is occupied by the Students Union and the other wings are a halls of residence. The two sections are distinct and have separate alarm systems. Horizontal evacuation is possible between the north wing and the east and west wings at the points marked on the plan. All floors are accessible by using the lifts. Emergency exit using lifts is possible in the accommodation wings during an evacuation. Safe refuge areas are available in all protected stair cores. There are three Fire Exits available from the building on the ground floor, one of which is Disabled Accessible. This is the main entrance (See attached floor plan).

### Action required on hearing the Fire Alarm:

If able, you should leave the building immediately by the nearest fire exit (see attached floorplan) and report to the assigned assembly point for the building.

If you are unable to evacuate the building unaided, please proceed to one of the safe refuges located in each stair core (see attached floor plan) and inform Security of your location on 020 7589 1000.

### Other recommendations:

Not all fire escapes are accessible by wheelchair and visitors to Imperial College London should familiarise themselves with the floor layout of the building they are in. Floor plans and evacuation equipment locations have been provided with this document.

### Equipment provided:

There are four Disabled Accessible fire exits available on the ground floor of the accommodation wings and three in the Student Union building including the main entrance (See attached floor plan).



The Deaf Alert system is installed in this building. If you would like access to a Deaf Alert Pager, please contact Imperial College London, Security Team on 020 7594 8910.



## Fire Safety

## General Emergency Evacuation Plan

## Fire Safety Information

### Fire action

#### IF YOU DISCOVER A FIRE:-

- Immediately operate the nearest fire alarm call point
- Attack the fire if possible with the appliances provided but do not take personal risks.

#### IF YOU HEAR THE FIRE ALARM:-

- \_\_\_\_\_ will call the fire brigade immediately by exchange telephone, (Always call the fire brigade immediately to every fire or suspicion of fire)
- 1 Lift the receiver and dial '999'
- 2 Give the operator your telephone number and ask for FIRE.
- 3 When the fire brigade replies give the call distinctly:-  
Fire at \_\_\_\_\_  
Fire at \_\_\_\_\_

DO NOT replace receiver until the address has been repeated by the FIRE BRIGADE.

- Leave the building and report to the person in charge of assembly point \_\_\_\_\_

USE THE NEAREST AVAILABLE EXIT

Do not stop to collect personal belongings  
Do not use the lift  
Never re-enter the building until authorised to do so.

Fire Action Notices can be found in any area within the College and stipulate action in the event of discovering a fire or in the event of the fire alarm sounding in the building.

Please familiarise yourself with the instructions stated in the notice and comply in the event of a fire or fire alarm.

In the event of fire. Do not call 999. Call Security on **0207 589 1000** and allow them to manage the incident.

Fire  
door  
keep shut

Fire Doors are designed to protect escape routes within buildings and limit the growth of a fire. Any door labelled with one of the above signs will resist a fire for a minimum of 30 minutes.

Please ensure that you do not prevent any door with this label from shutting and if you find a door that does not shut then please report it to a member of staff.



In case of  
fire break glass

To maintain security and safety on site, many doors are secured with magnetic locks that only release when the correct key card is used or when the fire alarm activates.

Should you come to a fire escape route door that appears to be locked (or has not released correctly) there will be a green break glass unit nearby which will release the door.

Push the plastic window in to operate the lock override.



Fire alarm  
call point

The fire alarm systems in all of our buildings rely on smoke and heat detectors in much the same way as any system that you might have at home.

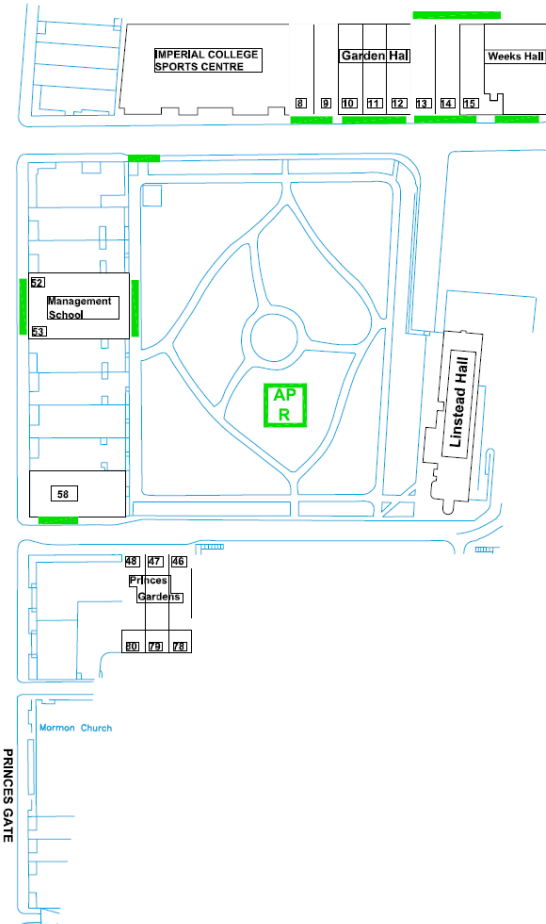
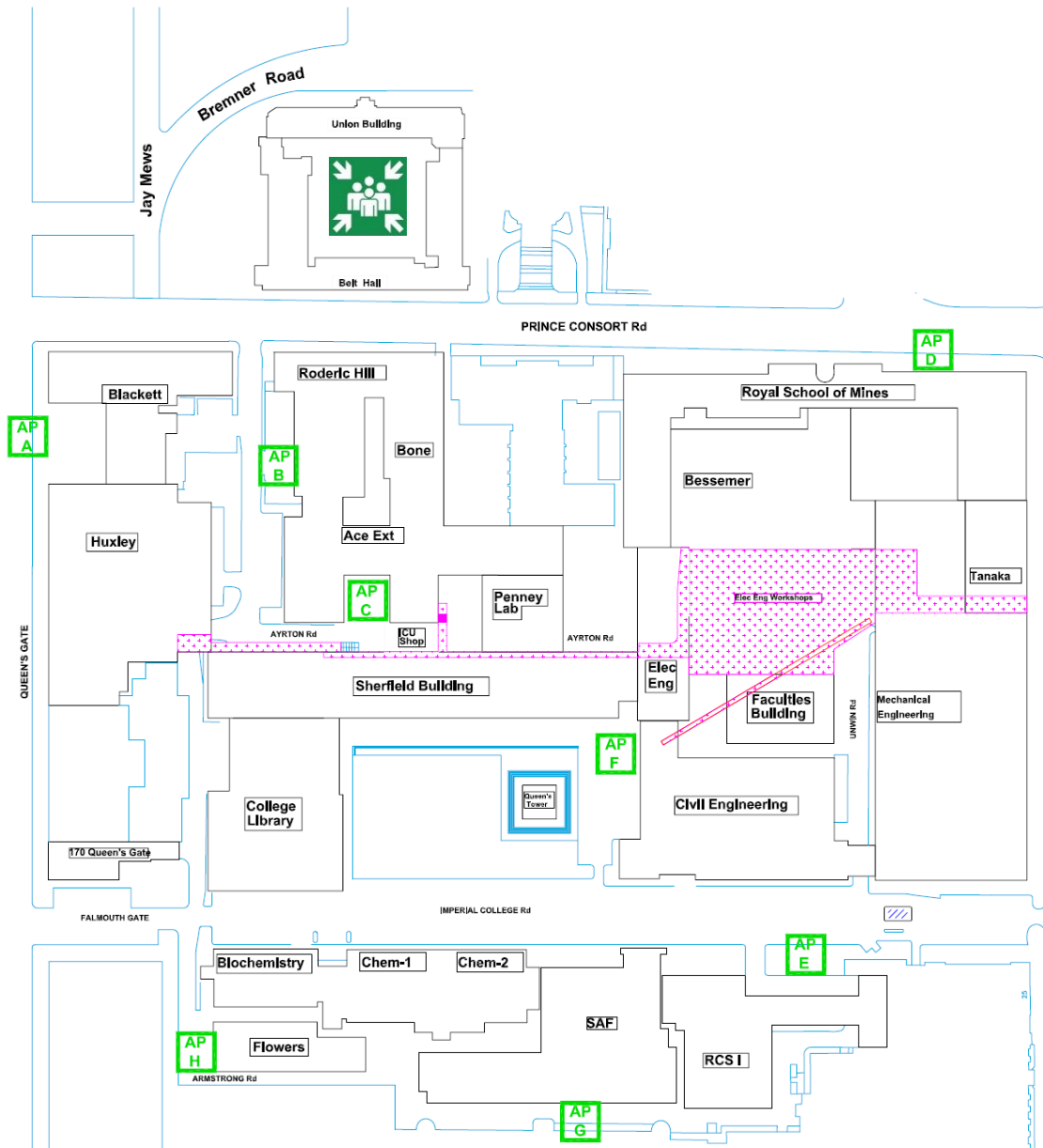
Our buildings are far more complex than domestic premises therefore we include the additional measure of Fire Alarm Call Points which will trigger the fire alarm system in a building.

If you see fire, ensure your own safety first and if possible activate a call point by pushing the plastic window

Fire Safety

General  
Emergency  
Evacuation  
Plan

Assembly  
Point



KEY ● AP Site Assembly Points

● F Beit Quadrangle Assembly Point

**Fire Safety**

**General  
Emergency  
Evacuation  
Plan**

**Beit  
Quadrangle**

**Level: B**



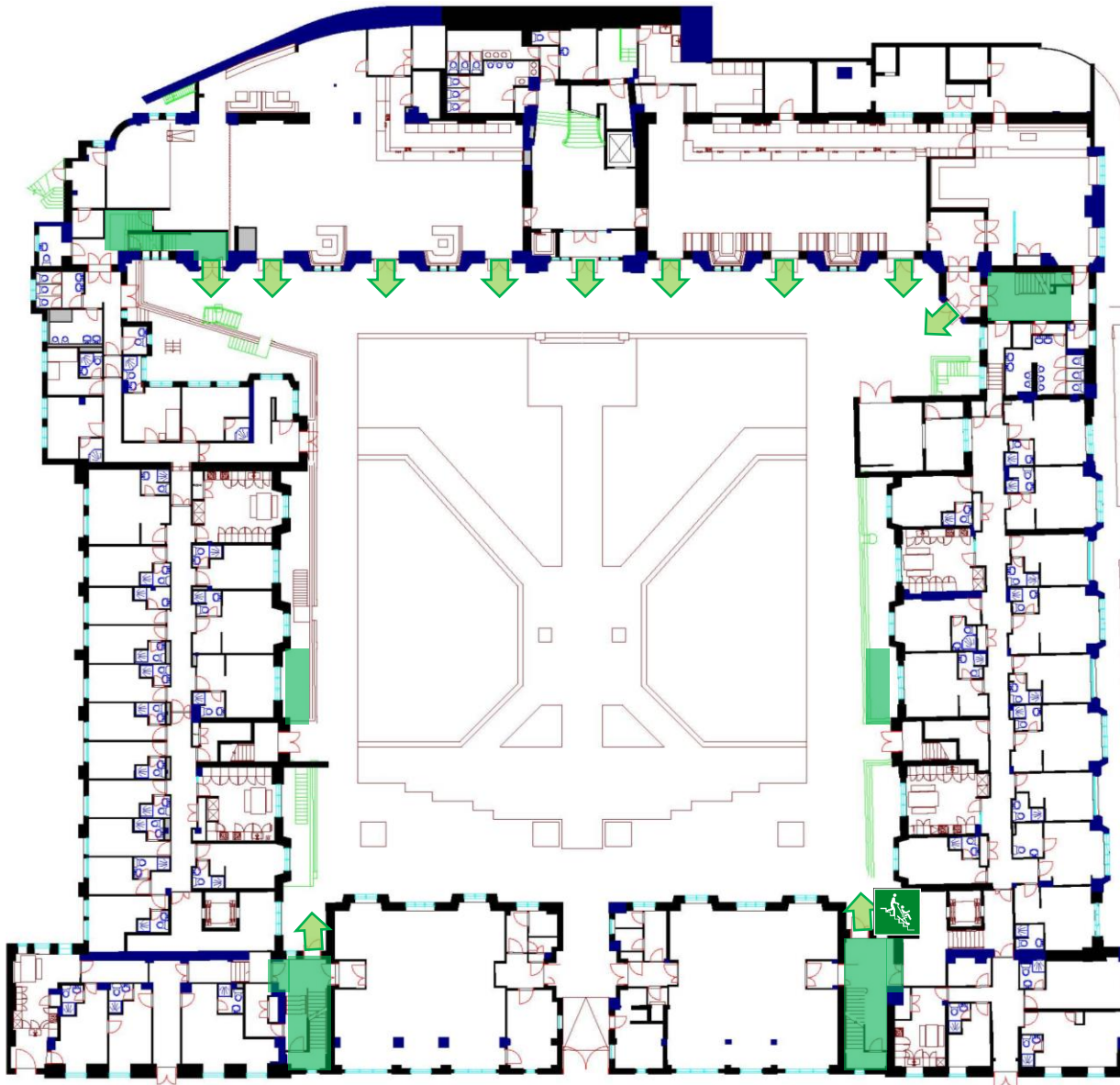
- KEY**
- Safe Route
  - Evac Chair
  - Refuge Point

**Fire Safety**

**General  
Emergency  
Evacuation  
Plan**

**Beit  
Quadrangle**

**Level: 0**



- KEY**
- ● Safe Route
  - Evac Chair
  - Refuge Point

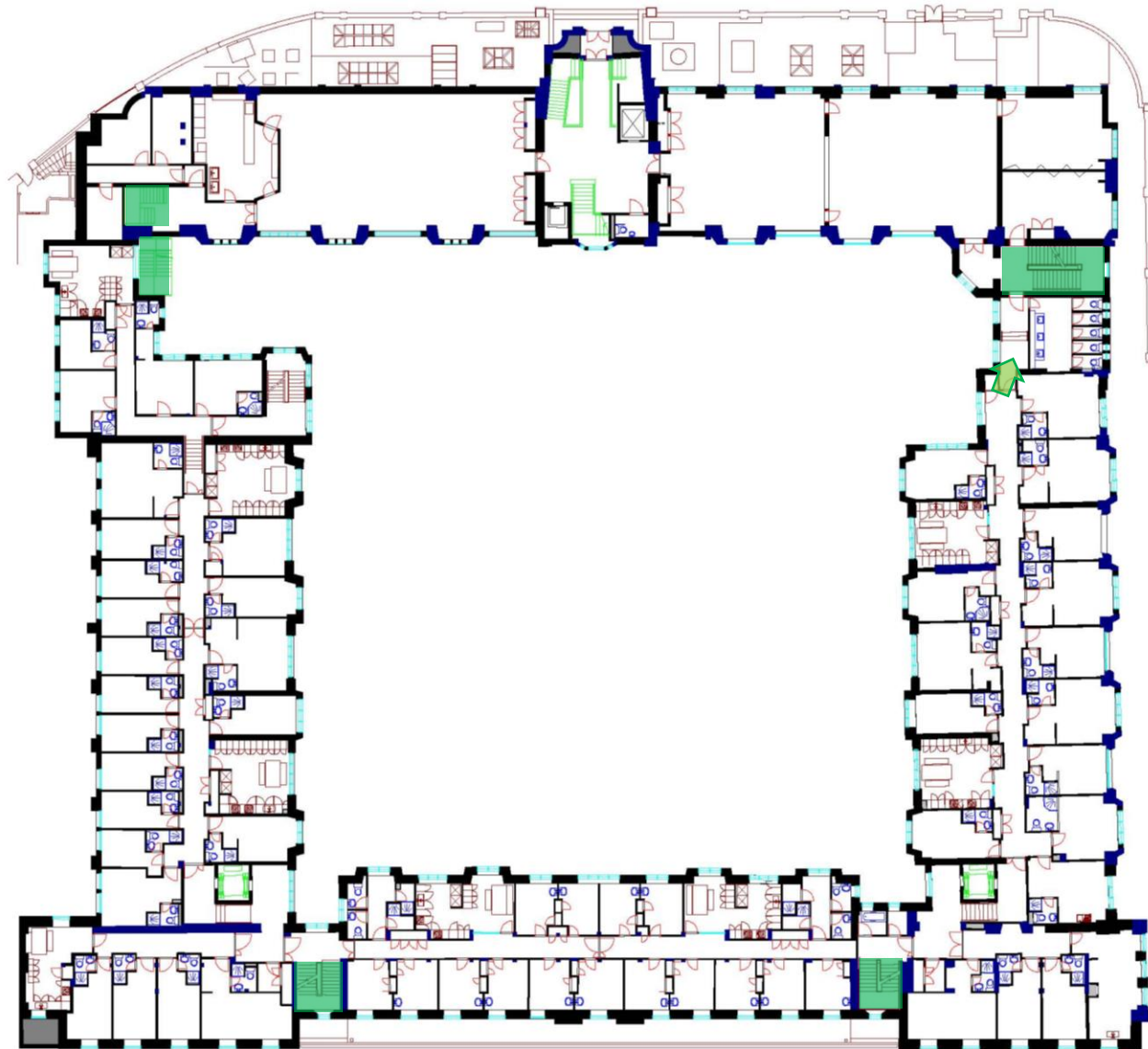


**Fire Safety**

**General  
Emergency  
Evacuation  
Plan**

**Beit  
Quadrangle**

**Level: 1**



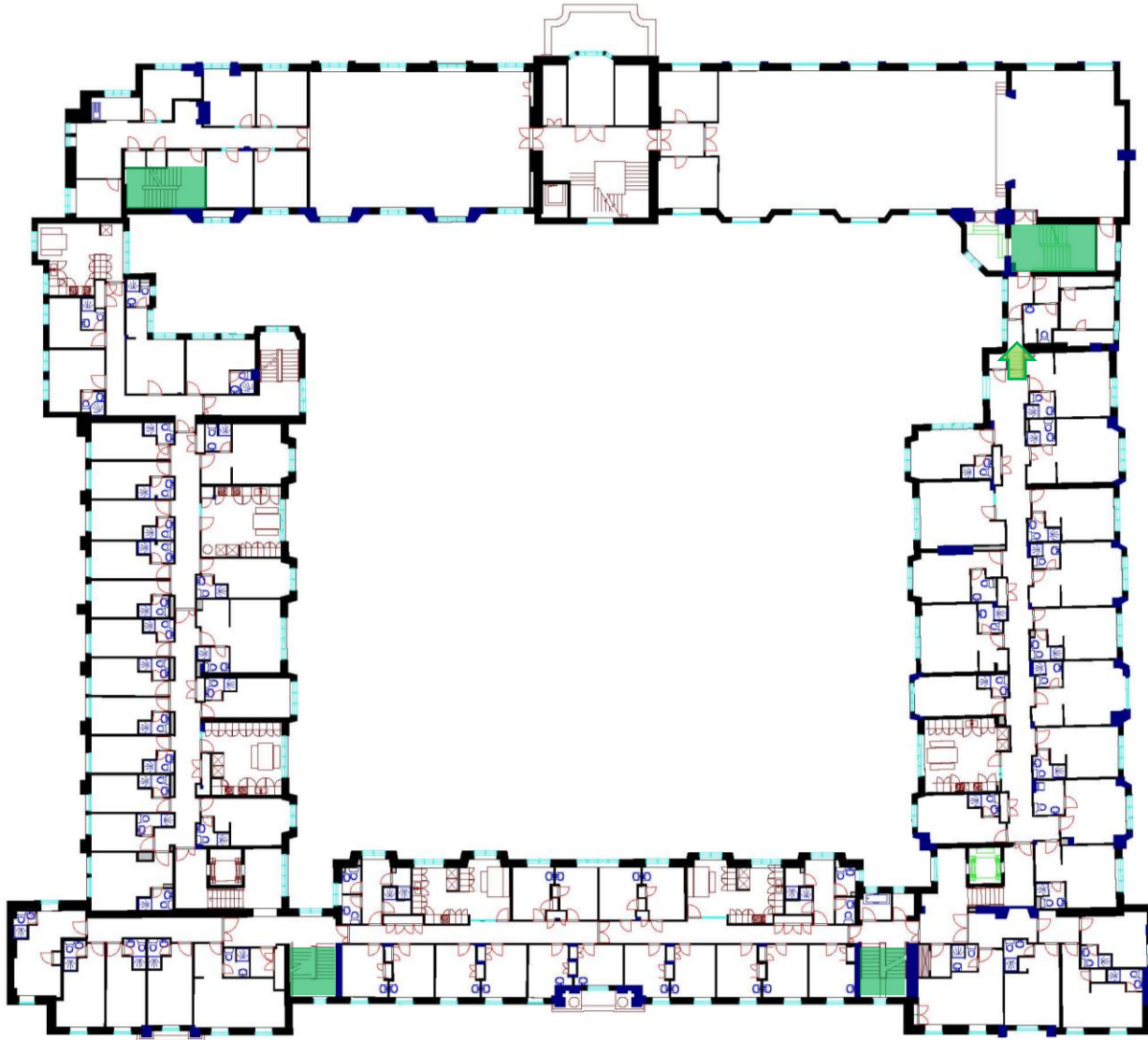
- KEY**
- Safe Route
  - Evac Chair
  - Refuge Point

**Fire Safety**

**General  
Emergency  
Evacuation  
Plan**

**Beit  
Quadrangle**

**Level: 2**



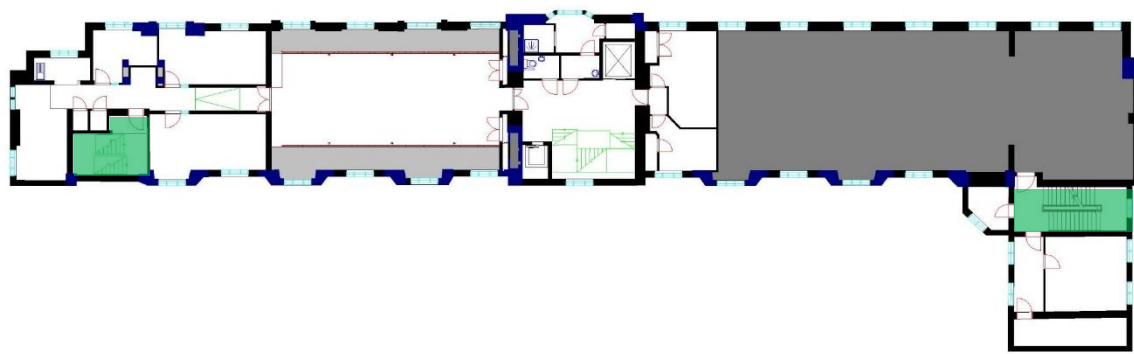
- KEY**
- ● Safe Route
  - 🚒 Evac Chair
  - ♿ Refuge Point

**Fire Safety**

**General  
Emergency  
Evacuation  
Plan**

**Beit  
Quadrangle**

**Level: 2M**



- KEY**
- Safe Route
  - Evac Chair
  - Refuge Point

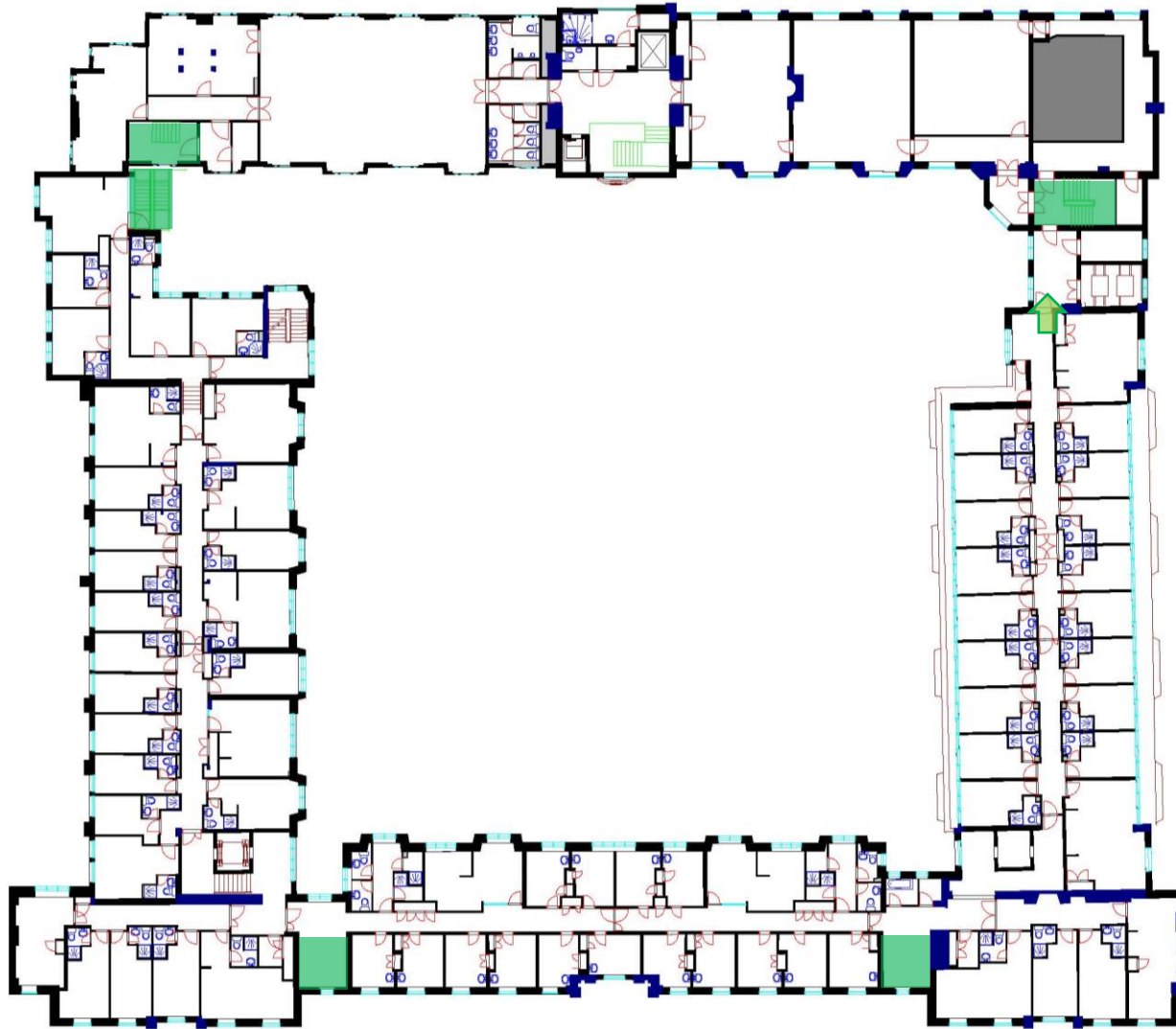


**Fire Safety**

**General  
Emergency  
Evacuation  
Plan**

**Beit  
Quadrangle**

**Level: 3**



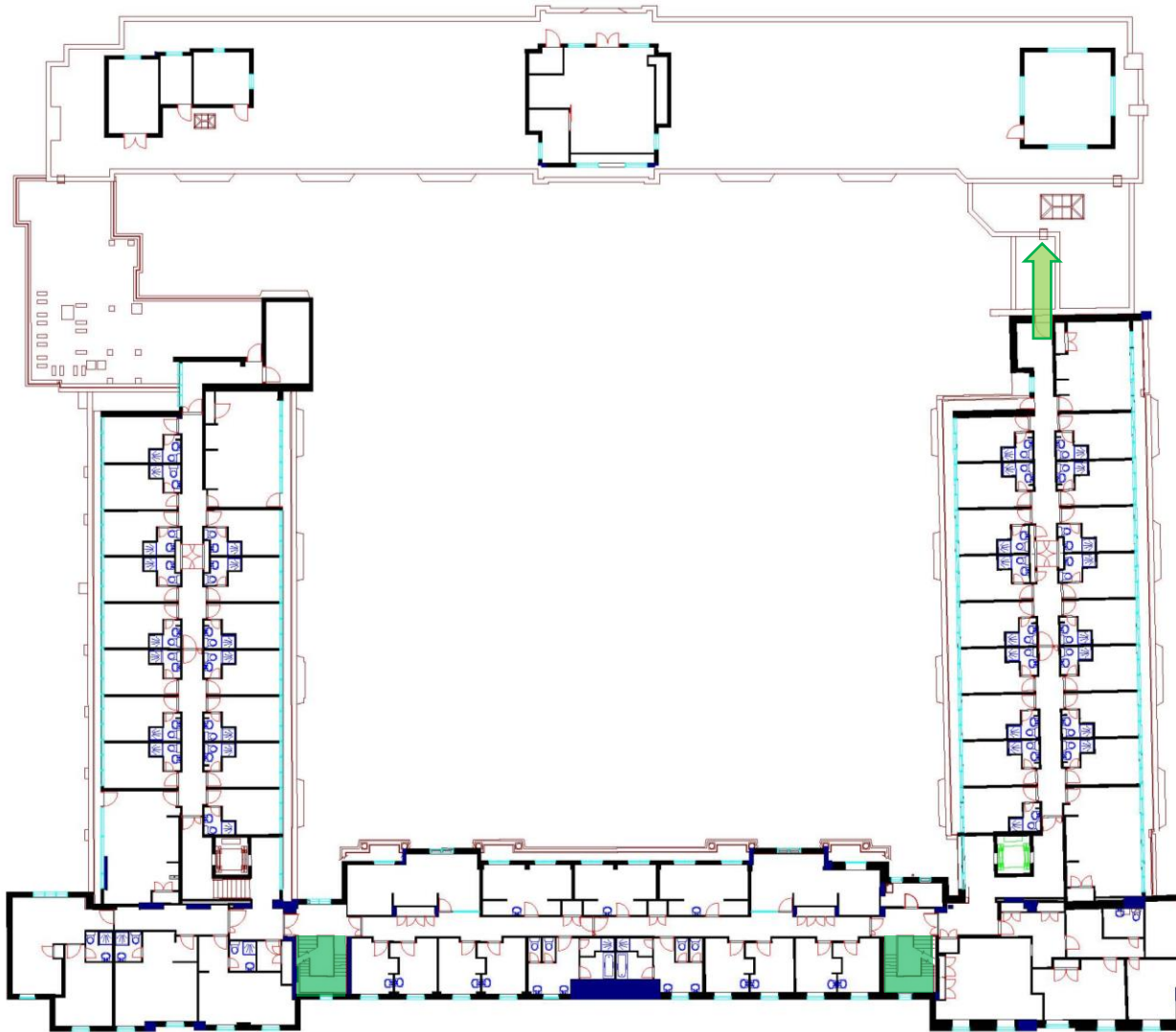
- KEY**
- ● Safe Route
  - 🚒 Evac Chair
  - ♿ Refuge Point

**Fire Safety**

**General  
Emergency  
Evacuation  
Plan**

**Beit  
Quadrangle**

**Level: 4**



- KEY**
- ● Safe Route
  - Evac Chair
  - Refuge Point