

The purpose of a Generic Emergency Evacuation Plan (GEEP) is to enable visitors to the building with restricted mobility or those who may not be able to evacuate unaided to become familiar with the layout, evacuation procedures, available equipment and communication devices. If you feel that this document does not provide you with sufficient information or that you require further assistance, please contact the Imperial College London, Security Team on 020 7594 8910.

**The building:**

The Central Library is comprised of 6 floors. All floors are accessible by using the lifts. Safe refuge areas are available in the north stair cores on levels 0 & 3 (see plan) The building is split into two sections meaning that, depending on location, the means of escape may be horizontal into the Sherfield Building (see plan).

**Action required on hearing the Fire Alarm:**

If able, you should leave the building immediately by the nearest fire exit (see attached floorplan) and report to the assigned assembly point for the building.

If you are unable to evacuate the building unaided, please proceed to one of the safe refuges located in each stair core (see attached floor plan).

An EVC System (Emergency Voice Communication System) is available in each safe refuge. Use this to contact the security team and notify them of your location, details of which are printed on the front of the panel. Full details on how to use the emergency call point are also provided in the safe refuge.

**Other recommendations:**

It is recommended that all visitors to Imperial College London, should familiarise themselves with the fire alarm signals and floor layout of the building they are in. Floor plans and evacuation equipment locations have been provided with this document.

**Equipment provided:**

All emergency exits from the building are suitable for wheelchair users.

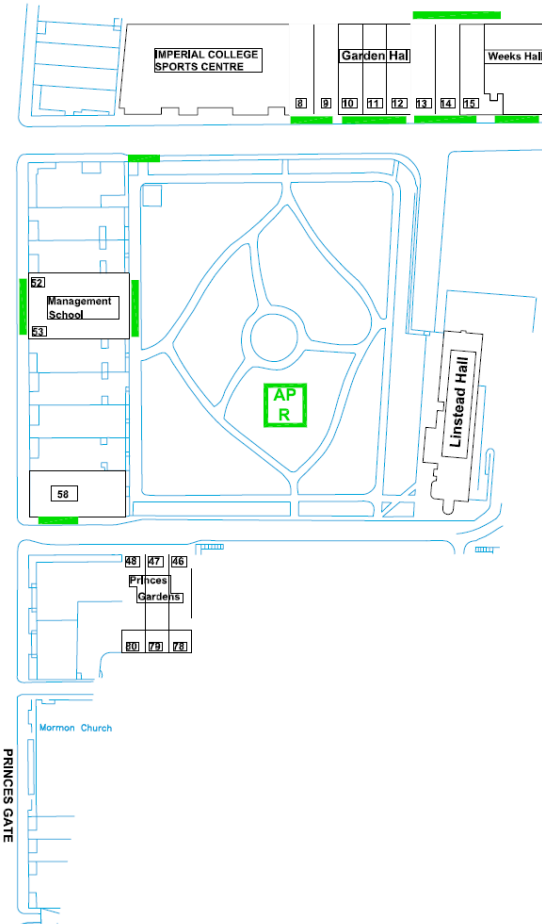
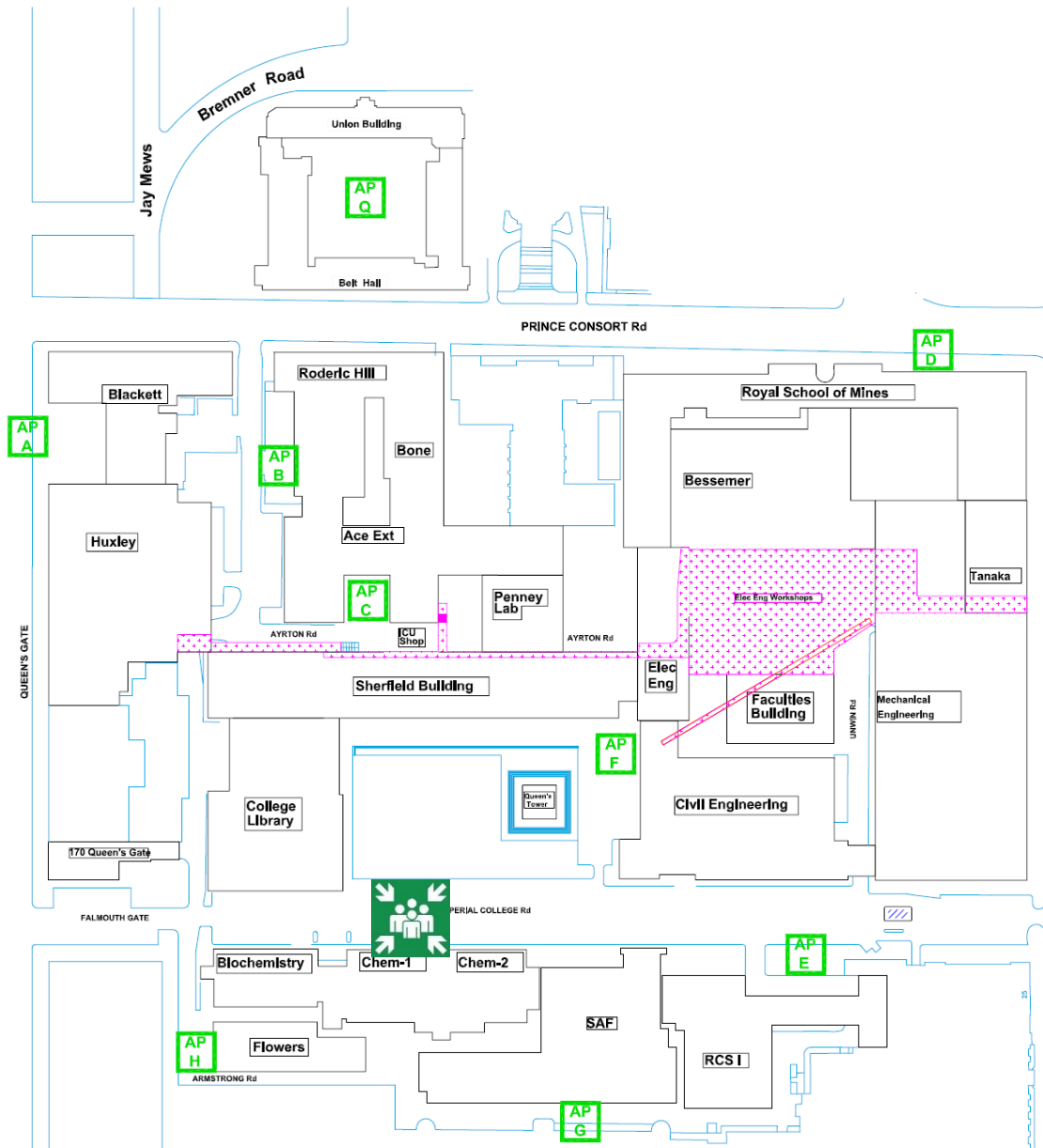
Evacuation chairs are provided by the main staircase within the Library (Note. Only users with the appropriate training should use Evacuation Chairs).

**A vibrating alert system is installed in this building. If you would like access to a pager, please contact Imperial College London, Security Team on 020 7594 8910.**

Fire Safety

General  
Emergency  
Evacuation  
Plan

Assembly  
Point



**KEY**  
● **AP** Site Assembly  
● **F** Points

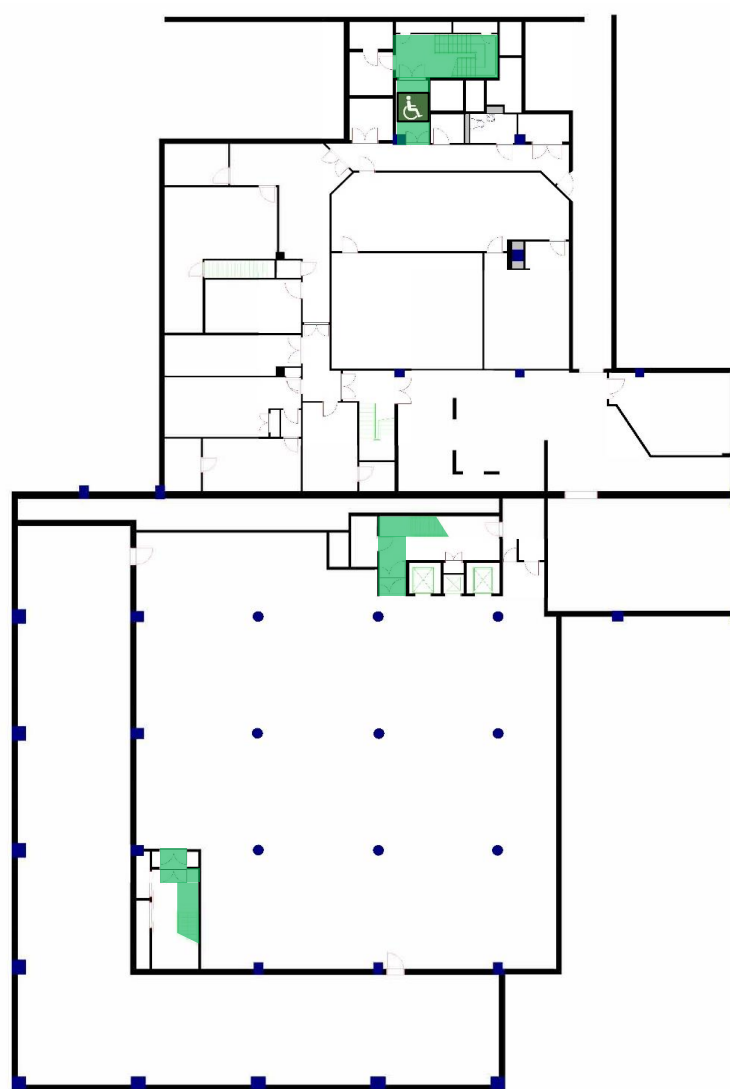
 **Abdus Salam  
Assembly Point**

**Fire Safety**

**General  
Emergency  
Evacuation  
Plan**

**Abdus  
Salam  
Library**

**Level: 0**



**KEY** ● Safe Route ● Evac Chair ● Refuge Point

**Fire Safety**

**General  
Emergency  
Evacuation  
Plan**

**Abdus  
Salam  
Library**

**Level: 1**



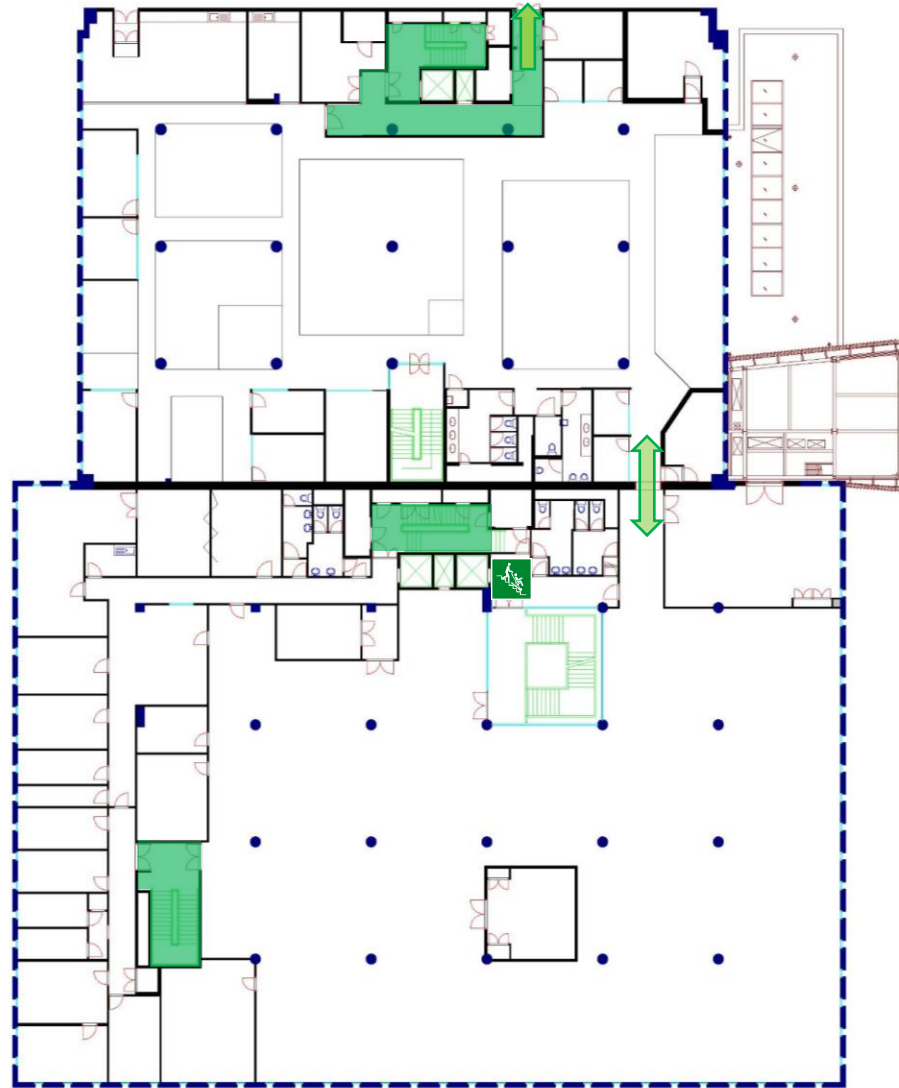
- KEY**
- ● Safe Route
  - 🪑 Evac Chair
  - ♿ Refuge Point

Fire Safety

General  
Emergency  
Evacuation  
Plan

Abdus  
Salam  
Library

Level: 2



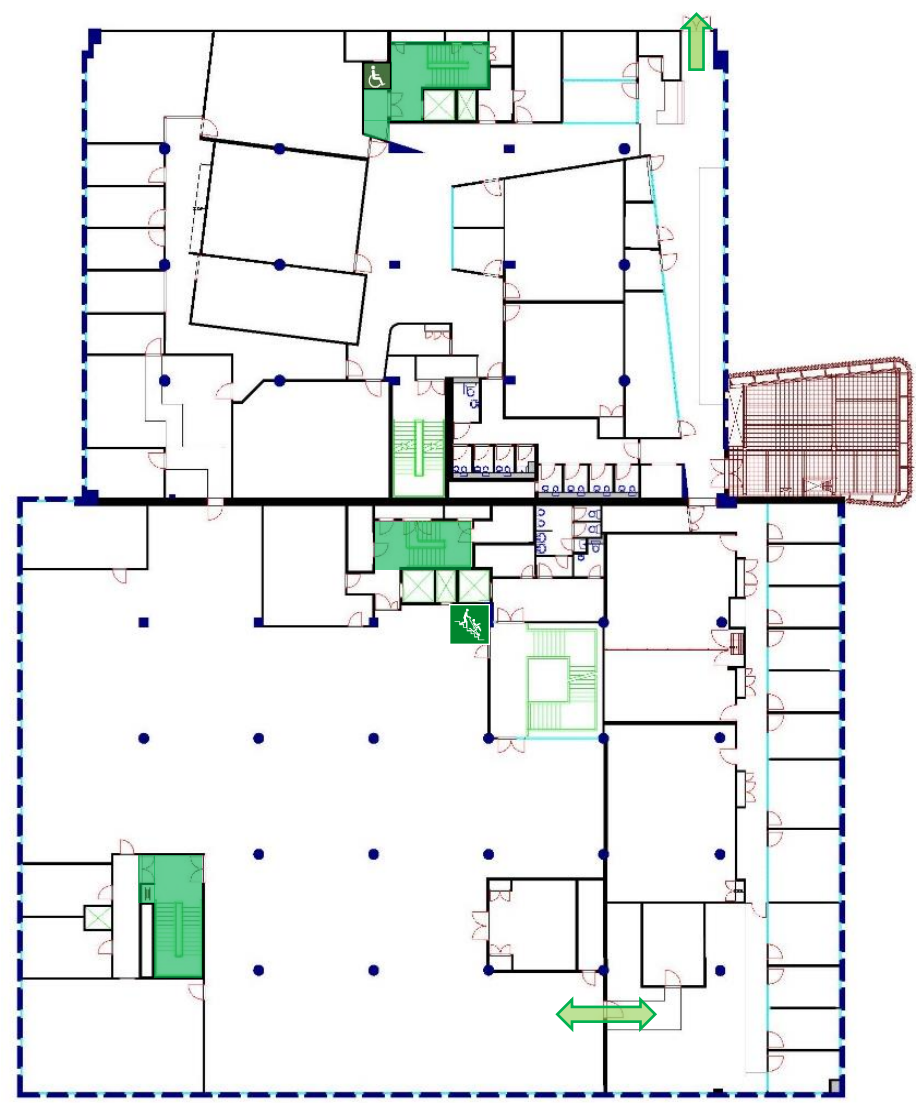
**KEY** ● ● Safe Route ● Evac Chair ● Refuge Point

**Fire Safety**

**General  
Emergency  
Evacuation  
Plan**

**Abdus  
Salam  
Library**

**Level: 3**



- KEY**
- ●
  - Safe Route
  - Evac Chair
  - Refuge Point

**Fire Safety**

**General  
Emergency  
Evacuation  
Plan**

**Abdus  
Salam  
Library**

**Level: 4**



- KEY**
- ●
  - Safe Route
  - Evac Chair
  - Refuge Point

**Fire Safety**

**General  
Emergency  
Evacuation  
Plan**

**Abdus  
Salam  
Library**

**Level: 5**



**KEY** ● Safe Route ● Evac Chair ● Refuge Point